

# SPRINGBROOK



**Lot 1109 Springbrook Avenue, Springbrook, Redlynch**

*Price starting from \$829,960*

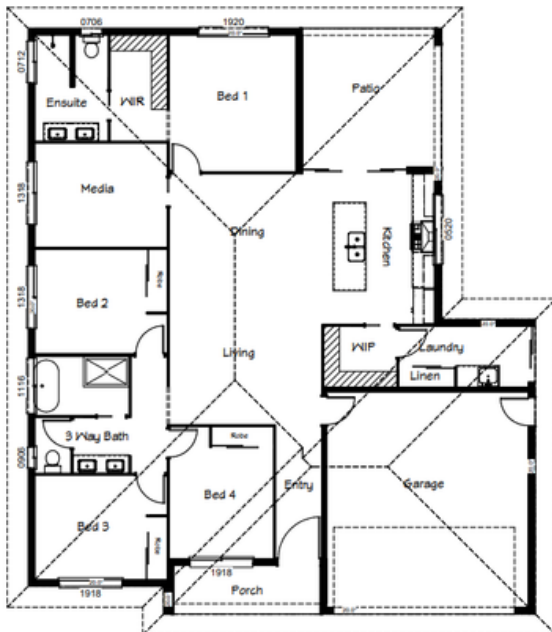
Total Size: 220.9m<sup>2</sup>

Living Size: 160m<sup>2</sup>

Land Size: 666m<sup>2</sup>

## The Savannah

4 2 2 1



## Standard Inclusions

- 600x600 Ultimate Range Tiles Throughout
- Ultimate Range Tile Selection for Splashbacks
- Essential Range Stone to Kitchen Benchtops
- Silk Finish Laminate to Kitchen Cabinets
- 90cm Overhead Cabinets to Kitchen with Bulkhead to ceiling
- Natural Finish Laminate to Other Cabinets
- 90cm Induction Cooktop and 90cm Canopy Rangehood
- 60cm Oven and 60cm Dishwasher
- Frameless Mirrors and Semi-Frameless Shower Screens
- Air conditioning to Bedrooms and Living
- Diamond Grille Security Screens to Sliding Doors and Windows
- Upgraded Plumbing Allowance
- Upgraded Electrical Allowance
- Aluminium Front Entrance Door
- Upgraded Internal door selection
- 1 x Laminate and 1 x Mirror Door to Robes
- Laminate Shelf with hanging rail in all robes
- 4 levels of Laminate Shelving in Linen and Pantry
- 2600 Ceiling Height
- Smooth Render Finish to Exterior Walls
- TV Aerial
- Mailbox with Adhesive Numbers
- Council & Engineering Fees
- Soil Test and Site Inspection
- Double Lock up Garage with Panel Lift Door
- 40m<sup>2</sup> Aggregate Driveway Allowance
- 25 Year Structural Guarantee

07 4041 3333

[www.valuehomes.com.au](http://www.valuehomes.com.au)

[reception@valuehomes.com.au](mailto:reception@valuehomes.com.au)

Please speak with one of our design consultants for further information on all of our standard inclusions and upgrade options. Please note: All images are for illustration purposes only. All dimensions mentioned above are approximates only. Pricing subject to site tests and inclusions. Options to modify the floor plan with one of our experienced Design Consultants

Intake Road, Redlynch | PO Box 4954 Cairns Qld 4870  
07 4051 4422 | [info@springbrookland.com.au](mailto:info@springbrookland.com.au) | [springbrookland.com.au](http://springbrookland.com.au)

