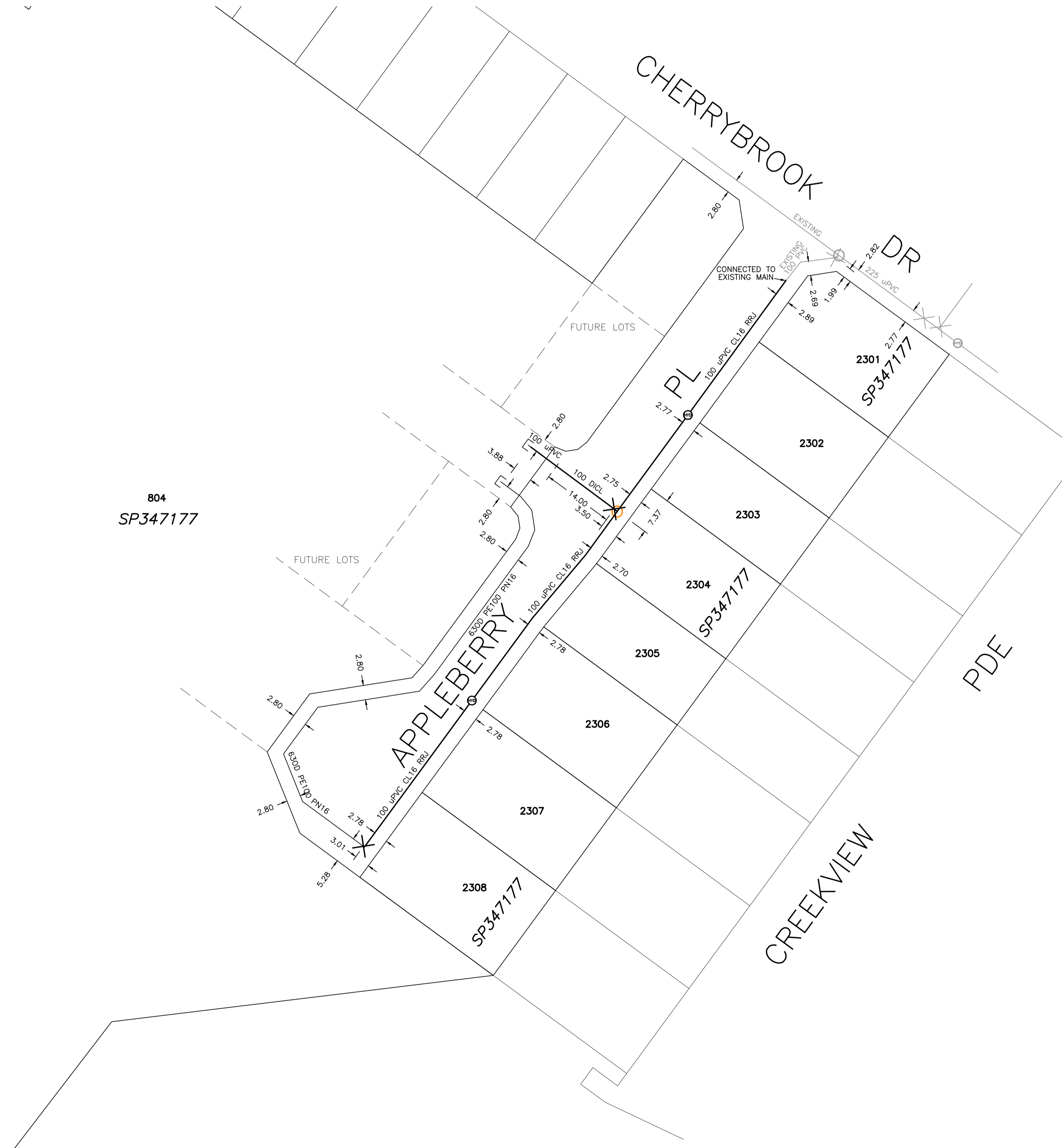


PRELIMINARY ONLY



PRELIMINARY ONLY

LEGEND

- HYDRANT
- STOP VALVE
- SCOUR VALVE
- JUNCTION
- VALVE PIT
- AIR VALVE
- REDUCER
- END CAP
- MARKER

CERTIFICATION
 RPS AAP Consulting Pty Ltd (ACN 117 883 173), certifies that the locations of the water infrastructure on this plan have been surveyed in accordance with the requirements of the FNQROC Development Manual and, to the best of our knowledge and subject to the Important Note below, are accurate.

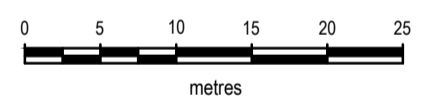
- IMPORTANT NOTE**
- This plan was prepared for the sole purposes of the client for the specific purpose of recording the infrastructure for the Cairns Regional Council. This plan is strictly limited to the Purpose and does not apply directly or indirectly and will not be used for any other application, purpose, use or matter. The plan is presented without the assumption of a duty of care to any other person (other than the Client) ("Third Party") and may not be relied on by Third Party.
 - RPS AAP Consulting Pty Ltd will not be liable (in negligence or otherwise) for any direct or indirect loss, damage, liability or claim arising out of or incidental to:
 - Third Party publishing, using or relying on the plan;
 - RPS AAP Consulting Pty Ltd relying on information provided to it by the Client or a Third Party where the information is incorrect, incomplete, inaccurate, out-of-date or unreasonable;
 - any inaccuracies or other faults with information or data sourced from a Third Party;
 - RPS AAP Consulting Pty Ltd relying on surface indicators that are incorrect or inaccurate;
 - the Client or any Third Party not verifying information in this plan where recommended by RPS AAP Consulting Pty Ltd;
 - lodgement of this plan with any local authority against the recommendation of RPS AAP Consulting Pty Ltd;
 - the accuracy, reliability, suitability or completeness of any approximations or estimates made or referred to by RPS AAP Consulting Pty Ltd in this plan.
 - Without limiting paragraph 1 or 2 above, this plan may not be copied, distributed, or reproduced by any process unless this note is clearly displayed on the plan.
 - Scale shown is correct for the original plan and any copies of this plan should be verified by checking against the bar scale.
 - Stop valves, hydrants and other visible surface indicators have been located by survey. Other information has been obtained from design and construction information [provided by Third Parties] and should be checked before use.
 - The positions of some services shown on this plan may have been exaggerated for drawing clarity purposes. Dimensions shown take precedence over scaled position.

NOTES

Level Datum: AHD
 Origin of Levels: PSM 101497
 RL 42.639

Meridian: GDA94 MGA Zone 55 (Plane)
 Vide GNSS

Origin of Coordinates: PSM 101497
 E 363,782,962
 N 8,118,514,519



SCALE 1:500 IS APPLICABLE ONLY TO THE ORIGINAL SHEET SIZE. (A1)
 (1:1000 @ A3)

RPS CLIENT MANAGER	CHECKED	SURVEYED
A KERLIN	DKO	7/6/2024
COMPILED	CAD REF	
AMK	PR135576-58.DWG	
SHEET SIZE	SHEET 1	AU013452_PR135576-58-A - Control DKO 03/04/24
A1	OF SHEETS 1	XR PR135576-57.DWG

RPS AAP Consulting Pty Ltd
 ACN 117 883 173
 135 Abbott St
 PO Box 1949
 CAIRNS QLD 4870
 T +61 7 4031 1336
 F +61 7 4031 2942
 W rpsgroup.com

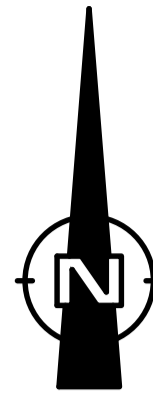


© COPYRIGHT PROTECTS THIS PLAN
 Unauthorised reproduction or amendment not permitted. Please contact the author.

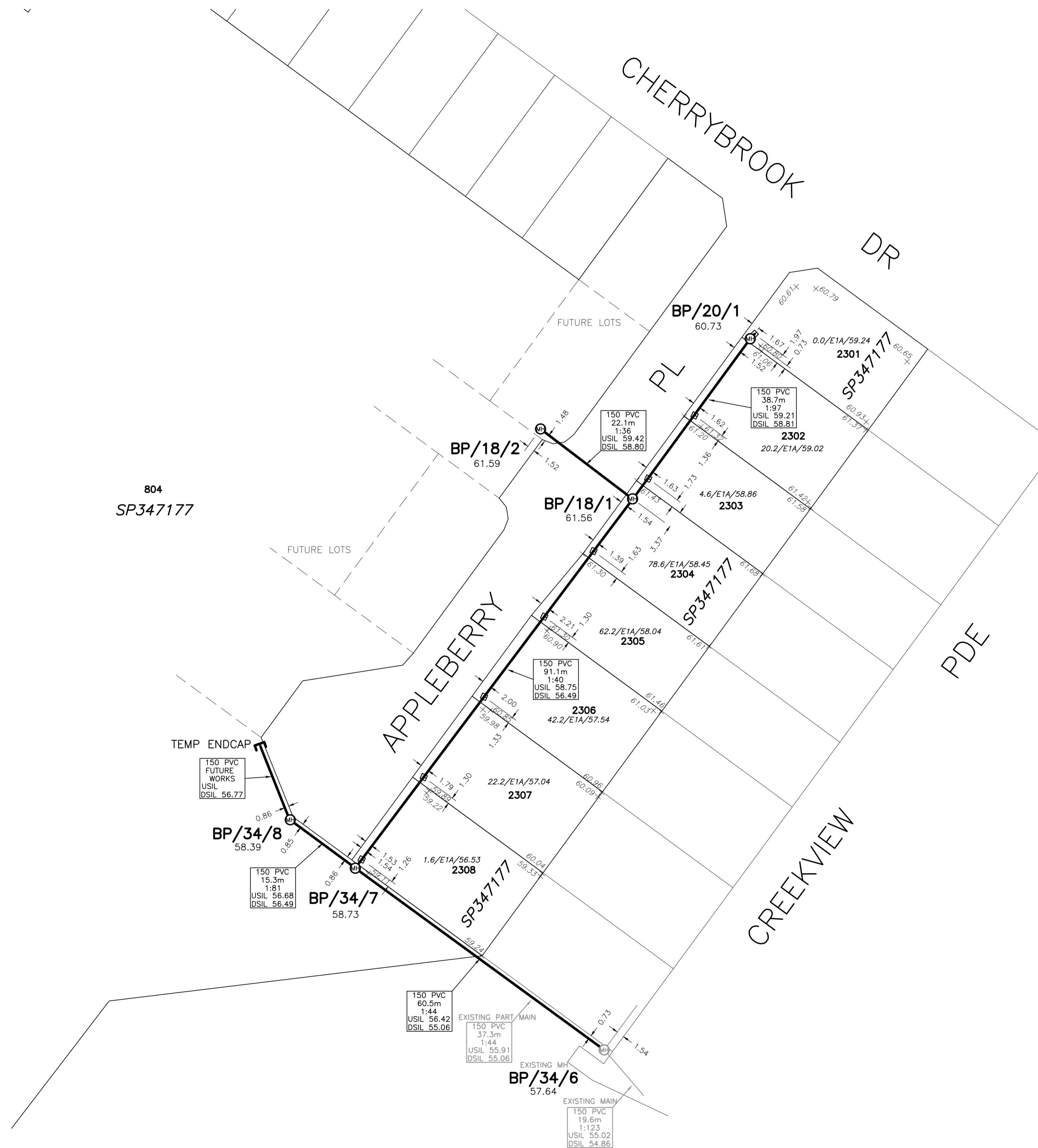
**FGF DEVELOPMENTS
 PTY LTD**

**CHERRYBROOK
 STAGE 23A
 AS-CONSTRUCTED
 WATER RETICULATION**

SCALE	DATE	DRAWING NO.	ISSUE
1:500	21/6/2024	PR135576-58	



PRELIMINARY ONLY

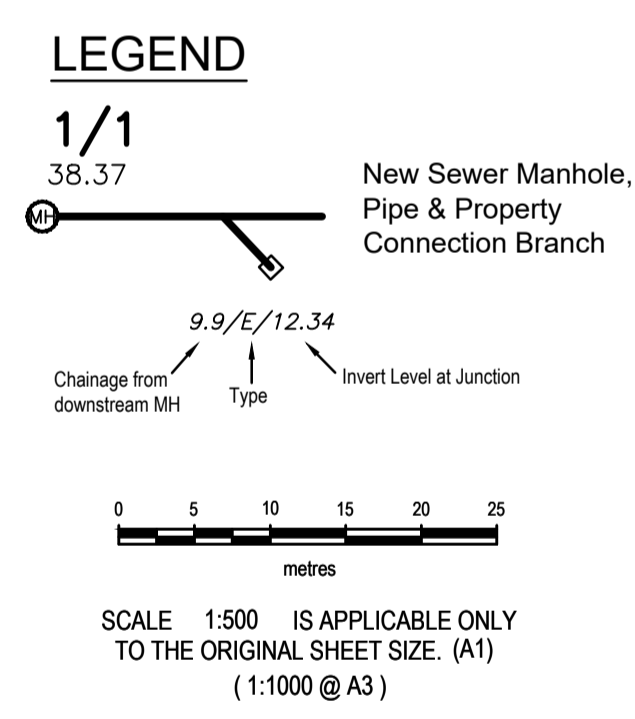


PRELIMINARY ONLY

CERTIFICATION
 RPS AAP Consulting Pty Ltd (ACN 117 883 173), certifies that the locations, surface and invert levels of the sewerage infrastructure on this plan have been surveyed in accordance with the requirements of the FPAQ/OC Development Manual and, to the best of our knowledge and subject to the important Note below, are accurate.
 Authorised Delegate
 Date

- IMPORTANT NOTE**
- This plan was prepared for the sole purposes of the client for the specific purpose of recording the infrastructure for the Cairns Regional Council. This plan is strictly limited to the Purpose and does not apply directly or indirectly and will not be used for any other application, purpose, use or matter. The plan is presented without the assumption of a duty of care to any other person (other than the Client) ("Third Party") and may not be relied on by Third Party.
 - RPS AAP Consulting Pty Ltd will not be liable (in negligence or otherwise) for any direct or indirect loss, damage, liability or claim arising out of or incidental to:
 - Third Party publishing, using or relying on the plan;
 - RPS AAP Consulting Pty Ltd relying on information provided to it by the Client or a Third Party where the information is incorrect, incomplete, inaccurate, out-of-date or unreasonable;
 - any inaccuracies or other faults with information or data sourced from a Third Party;
 - RPS AAP Consulting Pty Ltd relying on surface indicators that are incorrect or inaccurate;
 - the Client or any Third Party not verifying information in this plan where recommended by RPS AAP Consulting Pty Ltd;
 - judgement of this plan with any local authority against the recommendation of RPS AAP Consulting Pty Ltd;
 - the accuracy, reliability, suitability or completeness of any approximations or estimates made or referred to by RPS AAP Consulting Pty Ltd in this plan.
 - Without limiting paragraph 1 or 2 above, this plan may not be copied, distributed, or reproduced by any process unless this note is clearly displayed on the plan.
 - Scale shown is correct for the original plan and any copies of this plan should be verified by checking against the bar scale.
 - Type and size of mains, locations and levels of house connection branches and ends have been provided by the constructing contractor and have not been verified. Other information has been obtained from design and construction information [provided by Third Parties] and should be checked before use.
 - The positions of some services shown on this plan may have been exaggerated for drawing clarity purposes. Dimensions shown take precedence over scaled position.

NOTES
 Level Datum: AHD
 Origin of Levels: PSM 101497
 RL 42.639
 Meridian: GDA94 MGA Zone 55 (Plane)
 Vide GNSS
 Origin of Coordinates: PSM 101497
 E 363,782,962
 N 8,118,514,519



RPS CLIENT MANAGER	CHECKED	SURVEYED
A KERLIN	DKO	7/6/2024
COMPILED	CAD REF	
AMK	PR135576-59.DWG	
SHEET SIZE	SHEET 1 OF SHEETS	AUT13452_PR120148-59 A - Control DKO 030624.dwg
A1	1	XR PR135576-57.DWG

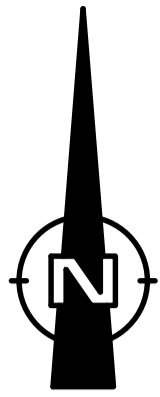
RPS AAP Consulting Pty Ltd
 ACN 117 883 173
 135 Abbott St
 PO Box 1949
 CAIRNS QLD 4870
 T +61 7 4031 1336
 F +61 7 4031 2942
 W rpsgroup.com

© COPYRIGHT PROTECTS THIS PLAN
 Unauthorised reproduction or amendment not permitted. Please contact the author.

FGF DEVELOPMENTS PTY LTD

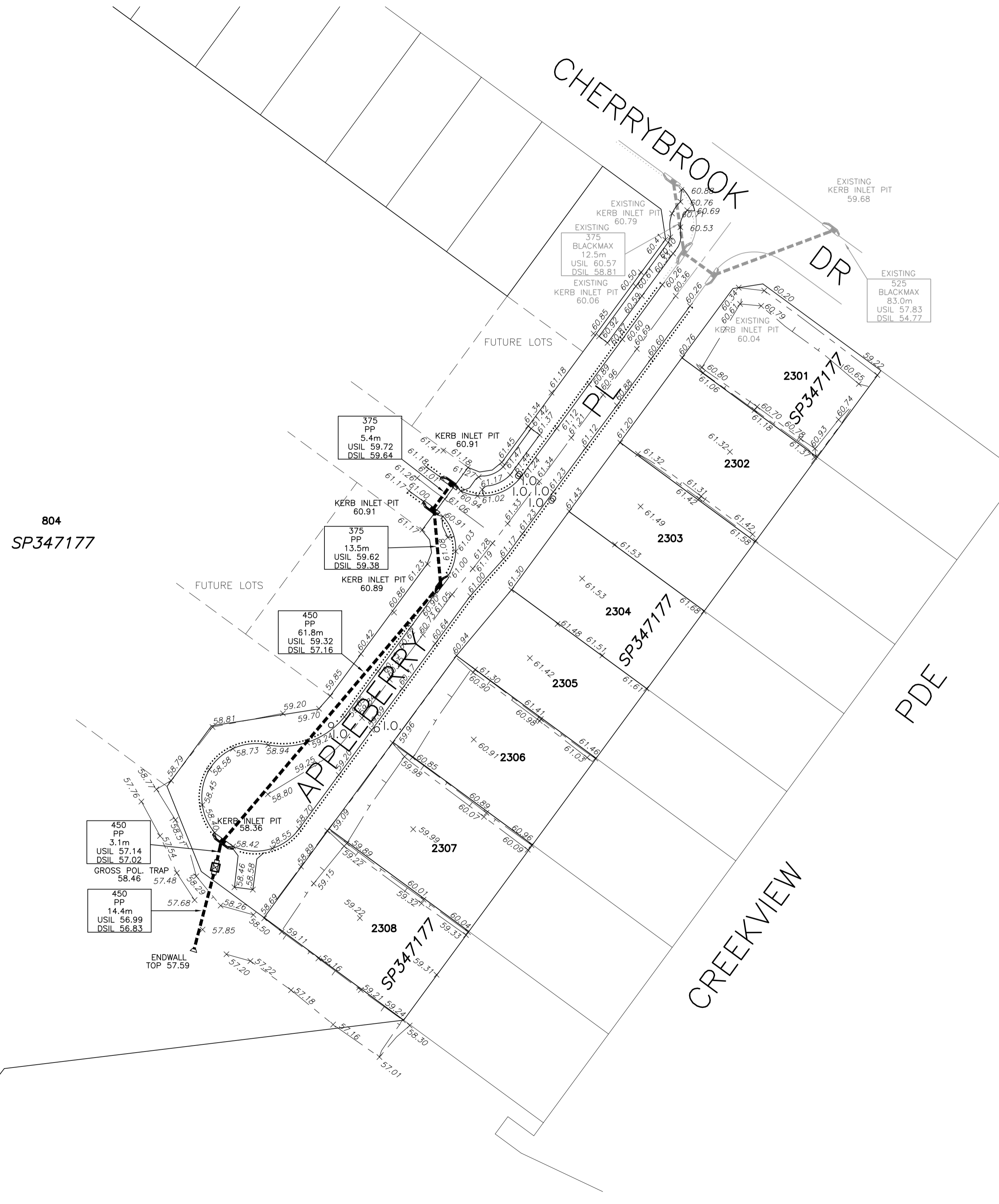
CHERRYBROOK STAGE 23A AS-CONSTRUCTED SEWERAGE

SCALE	DATE	DRAWING NO.	ISSUE
1:500	21/6/2024	PR135576-59	



PRELIMINARY ONLY

PRELIMINARY ONLY



CERTIFICATION
 RPS AAP Consulting Pty Ltd (ACN 117 883 173), certifies that the locations, surface and invert levels of the stormwater drainage infrastructure on this plan have been surveyed in accordance with the requirements of the FIDRODC Development Manual and, to the best of our knowledge and subject to the Important Note below, are accurate.

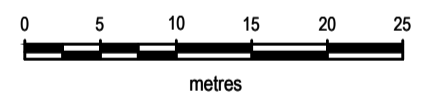
Authorised Delegate
 Date

- IMPORTANT NOTE**
- This plan was prepared for the sole purposes of the client for the specific purpose of recording the infrastructure for the Cairns Regional Council. This plan is strictly limited to the Purpose and does not apply directly or indirectly and will not be used for any other application, purpose, use or matter. The plan is presented without the assumption of a duty of care to any other person (other than the Client) ("Third Party") and may not be relied on by Third Party.
 - RPS AAP Consulting Pty Ltd will not be liable (in negligence or otherwise) for any direct or indirect loss, damage, liability or claim arising out of incidental to:
 - Third Party publishing, using or relying on the plan;
 - RPS AAP Consulting Pty Ltd relying on information provided to it by the Client or a Third Party where the information is incorrect, incomplete, inaccurate, out-of-date or unreasonable;
 - any inaccuracies or other faults with information or data sourced from a Third Party;
 - RPS AAP Consulting Pty Ltd relying on surface indicators that are incorrect or inaccurate;
 - the Client or any Third Party not verifying information in this plan where recommended by RPS AAP Consulting Pty Ltd;
 - judgement of this plan with any local authority against the recommendation of RPS AAP Consulting Pty Ltd;
 - the accuracy, reliability, suitability or completeness of any approximations or estimates made or referred to by RPS AAP Consulting Pty Ltd in this plan.
 - Without limiting paragraph 1 or 2 above, this plan may not be copied, distributed, or reproduced by any process unless this note is clearly displayed on the plan.
 - Scale shown is correct for the original plan and any copies of this plan should be verified by checking against the bar scale.
 - Size and type of stormwater pipes have been obtained from information from constructing contractor and have not been verified. All pipes are round concrete unless shown otherwise. Other information has been obtained from design and construction information [provided by Third Parties] and should be checked before use.
 - The positions of some services shown on this plan may have been exaggerated for drawing clarity purposes. Dimensions shown take precedence over scaled position.

NOTES
 Level Datum: AHD
 Origin of Levels: PSM 101497
 RL 42.639
 Meridian: GDA94 MGA Zone 55 (Plane)
 Vide GNSS
 Origin of Coordinates: PSM 101497
 E 363,782,962
 N 8,118,514,519

LEGEND

- Drainage Pipe U/G
- Catch Drain
- Sub-surface Drain
- I.O. Flushing Point
- Top of Bank
- Toe of Bank



SCALE 1:500 IS APPLICABLE ONLY TO THE ORIGINAL SHEET SIZE. (A1) (1:1000 @ A3)

RPS CLIENT MANAGER	CHECKED	SURVEYED
A KERLIN	DKO	7/6/2024
COMPILED	CAD REF	
AMK	PR135576-60.DWG	
SHEET SIZE	SHEET 1	AU1013452_PR120148-60 A - Cont'd DKO 030624.dwg
A1	OF SHEETS 1	XR PR135576-57.DWG

RPS AAP Consulting Pty Ltd
 ACN 117 883 173
 135 Abbott St
 PO Box 1949
 CAIRNS QLD 4870
 T +61 7 4031 1336
 F +61 7 4031 2942
 W rpsgroup.com



A TETRA TECH COMPANY

© COPYRIGHT PROTECTS THIS PLAN
 Unauthorised reproduction or amendment not permitted. Please contact the author.

**FGF DEVELOPMENTS
 PTY LTD**

**CHERRYBROOK
 STAGE 23A
 AS-CONSTRUCTED
 DRAINAGE**

SCALE	DATE	DRAWING NO.	ISSUE
1:500	21/6/2024	PR135576-60	

R:\PROJECTS\2024\23A\23A-01-AS-CONSTRUCTED DRAINAGE\23A-01-AS-CONSTRUCTED DRAINAGE.dwg