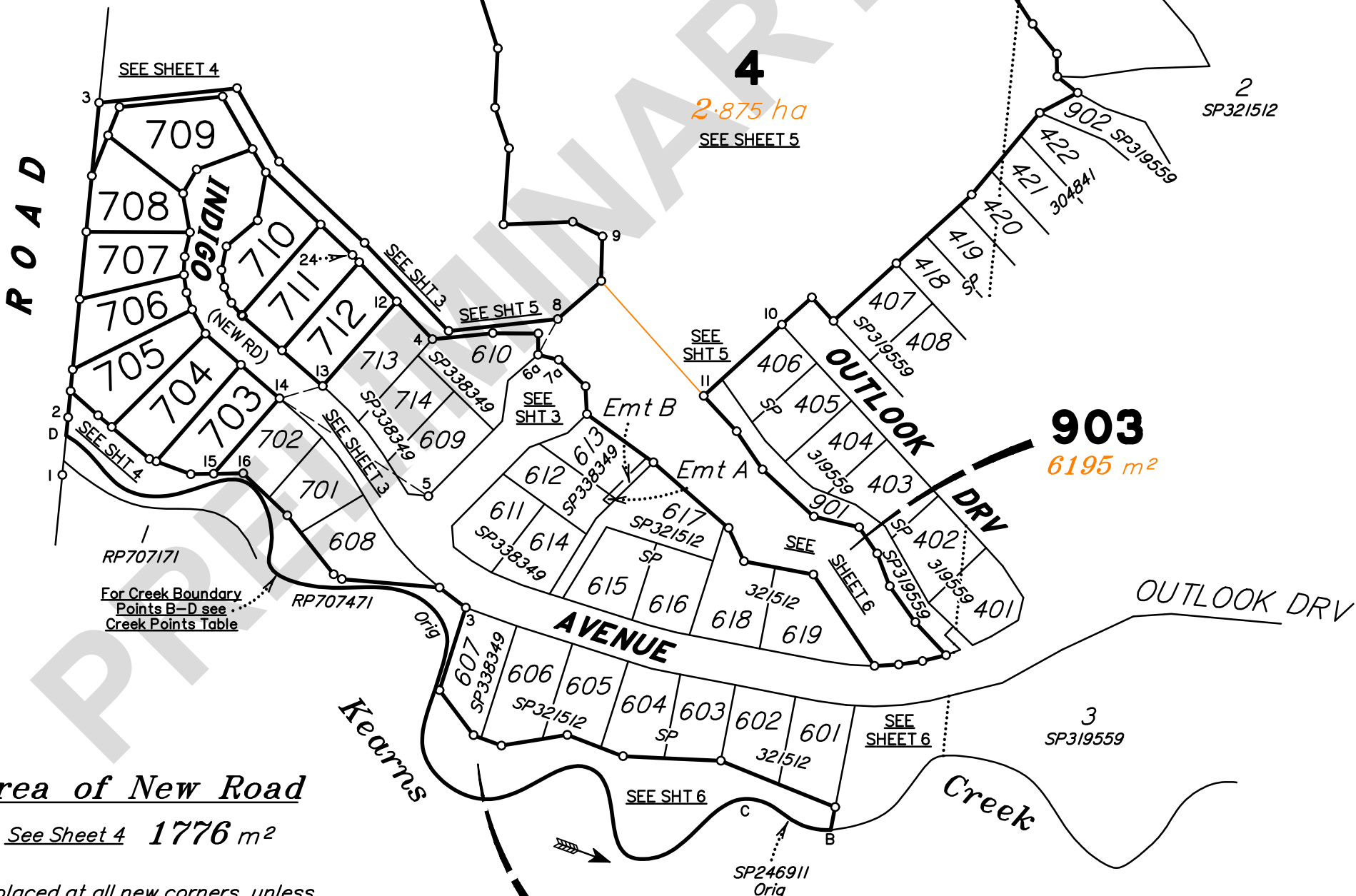


CREEK POINTS

	BEARING	DISTANCE
B	283°35'40"	14.042
	303°33'45"	11.56
	281°25'10"	9.136
C	235°12'	24.509
	237°50'35"	14.224
	271°31'50"	10.257
	337°49'30"	34.41
	294°05'50"	2.656
	252°58'35"	21.313
	255°33'55"	21.003
	310°55'25"	25.762
	11°56'15"	19.547
	15°45'05"	19.366
	16°41'35"	0.714
	329°11'20"	21.768
	282°26'55"	20.152
	271°16'30"	20.736
	300°31'25"	18.412
	9°26'05"	4.66
343°10'50"	25.762	
260°21'	28.889	
279°44'25"	20.684	
313°26'55"	26.888	

Orig SP246911

Orig Field Notes (RP707471)



Area of New Road

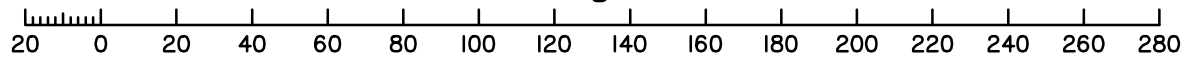
See Sheet 4 1776 m²

Peg placed at all new corners, unless otherwise stated.

See Sheet 2 for Reinstatement Report & Physical Feature Boundary Report.

Original information compiled from RP707471, SP246911, & SP338349 in the Department of Resources.

Scale 1:2000 - Lengths are in Metres.



RPS AAP Consulting Pty Ltd (ACN 117 883 173) hereby certify that the land comprised in this plan was surveyed by the corporation, by #####, surveying associate, for whose work the corporation accepts responsibility, under the supervision of Dennis James GARRET, cadastral surveyor, and that the plan is accurate, that the said survey was performed in accordance with the Survey and Mapping Infrastructure Act 2003 and Surveyors Act 2003 and associated Regulations and Standards and that the said survey was completed on ##/06/2024.

Authorised Delegate

Date

LOCAL GOVERNMENT: CAIRNS REGIONAL LOCALITY: BENTLEY PARK
Meridian: MGA Zone 55 Vide SP338349

Survey Records: No

Scale: 1:2000
Format: STANDARD

SP347201

**Plan of Lots
4, 703-712, 903 & 904**

Cancelling Lot 4 on SP338349

State copyright reserved.

**WARNING : Folded or Mutilated Plans will not be accepted.
Plans may be rolled.
Information may not be placed in the outer margins.**

(Dealing No.)

4. Lodged by

(Include address, phone number, email, reference, and Lodger Code)

I. Existing		Created		
Title Reference	Description	New Lots	Road	Secondary Interests
51311036	Lot 4 on SP338349	4, 703-712, 903 & 904	New Rd	_____

Reinstatement Report

- Boundaries have been fixed by original marks with no difference observed compared to SP338349.
- This is a staged subdivision and has been adequately connected to datum by previous plans (SP338349, SP321512 & SP319559).

Physical Feature Boundary Report

Reserved Plan of Survey under section 65 (4) (a) (ii) of the SMI Act 2003.

6. Building Format Plans only.

I certify that :

- * As far as it is practical to determine, no part of the building shown on this plan encroaches onto adjoining lots or road;
- * Part of the building shown on this plan encroaches onto adjoining * lots and road

.....
Cadastral Surveyor/Director* Date

*delete words not required

7. Lodgement Fees :

Survey Deposit	\$
Lodgement	\$
.....New Titles	\$
Photocopy	\$
Postage	\$
TOTAL	\$

8. Insert Plan Number **SP347201**

4 703-712, 903 & 904	Por 172 & Lot 1 on RP723800 Por 172
Lots	Orig

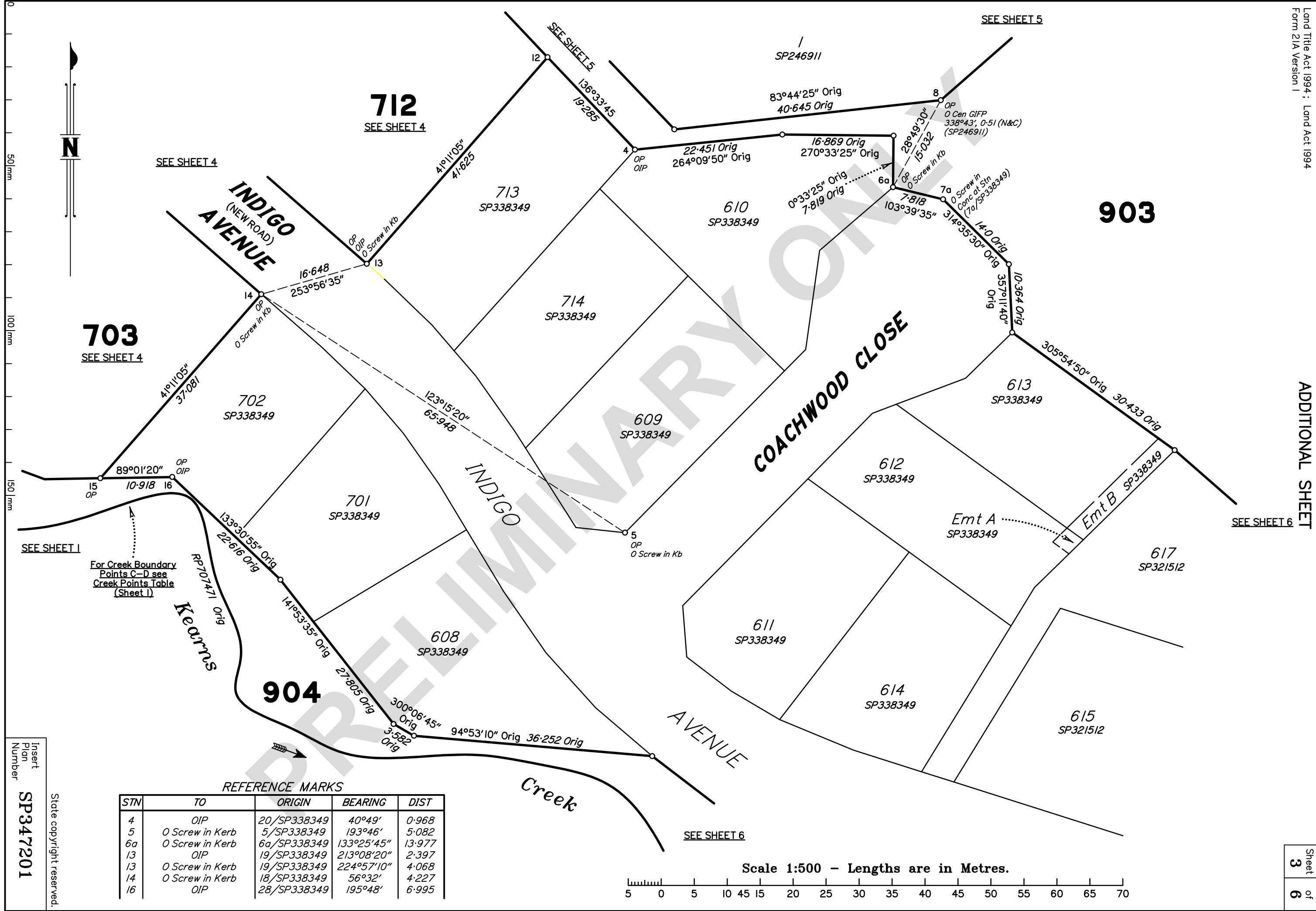
2. Orig Grant Allocation :

3. References :

Dept File :
Local Govt :
Surveyor : 9009 / AU213007340

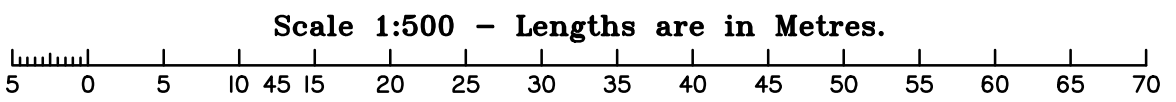
5. Passed & Endorsed :

By: RPS AAP Consulting Pty Ltd
Date :
Signed :
Designation : Cadastral Surveyor



REFERENCE MARKS

STN	TO	ORIGIN	BEARING	DIST
4	OIP	20/SP338349	40°49'	0.968
5	O Screw in Kerb	5/SP338349	193°46'	5.082
6a	O Screw in Kerb	6a/SP338349	133°25'45"	13.977
13	OIP	19/SP338349	213°08'20"	2.397
13	O Screw in Kerb	19/SP338349	224°57'10"	4.068
14	O Screw in Kerb	18/SP338349	56°32'	4.227
16	OIP	28/SP338349	195°48'	6.995



Insert
Plan
Number
SP347201
State copyright reserved.



0
50|mm
100|mm
150|mm

703
SEE SHEET 4

SEE SHEET 4

**INDIGO
(NEW ROAD)
AVENUE**

712
SEE SHEET 4

713
SP338349

714
SP338349

609
SP338349

701
SP338349

608
SP338349

904

610
SP338349

611
SP338349

614
SP338349

613
SP338349

615
SP321512

903

617
SP321512

COACHWOOD CLOSE

INDIGO

AVENUE

Creek

SEE SHEET 5

SEE SHEET 6

SEE SHEET 6

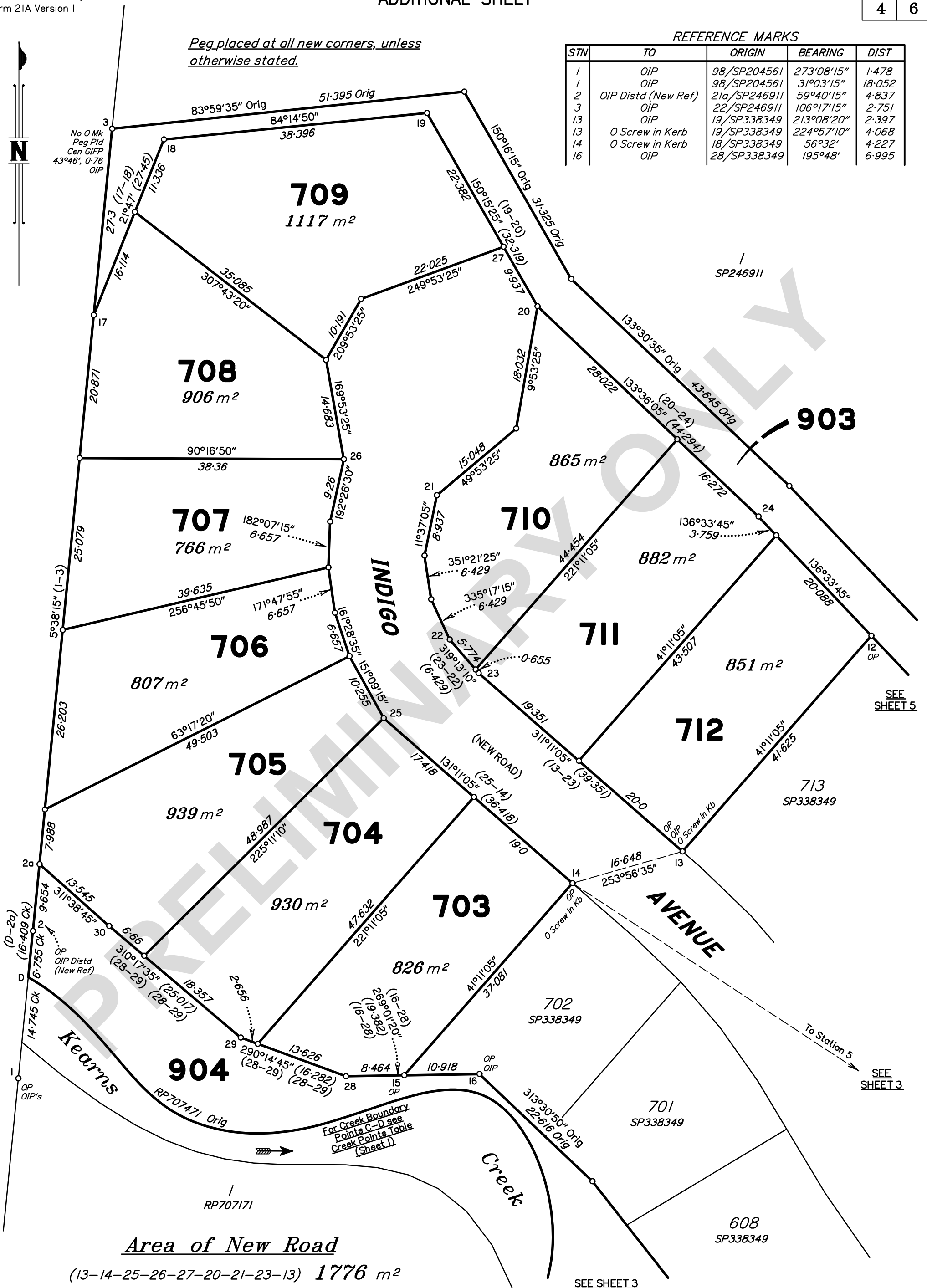
Peg placed at all new corners, unless otherwise stated.

REFERENCE MARKS

STN	TO	ORIGIN	BEARING	DIST
1	OIP	98/SP204561	273°08'15"	1.478
1	OIP	98/SP204561	31°03'15"	18.052
2	OIP Distd (New Ref)	21a/SP246911	59°40'15"	4.837
3	OIP	22/SP246911	106°17'15"	2.751
13	OIP	19/SP338349	213°08'20"	2.397
13	O Screw in Kerb	19/SP338349	224°57'10"	4.068
14	O Screw in Kerb	18/SP338349	56°32'	4.227
16	OIP	28/SP338349	195°48'	6.995

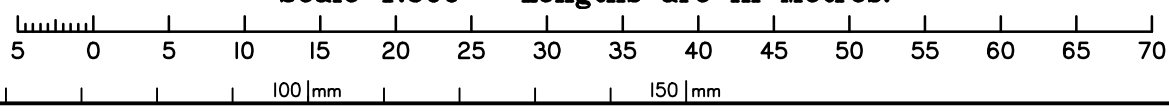


No O Mk
Peg Pld
Cen GIFFP
43°46', 0.76
OIP



Area of New Road
(13-14-25-26-27-20-21-23-13) 1776 m²

Scale 1:500 - Lengths are in Metres.



State copyright reserved.

Insert Plan Number **SP347201**

SEE SHEET 5

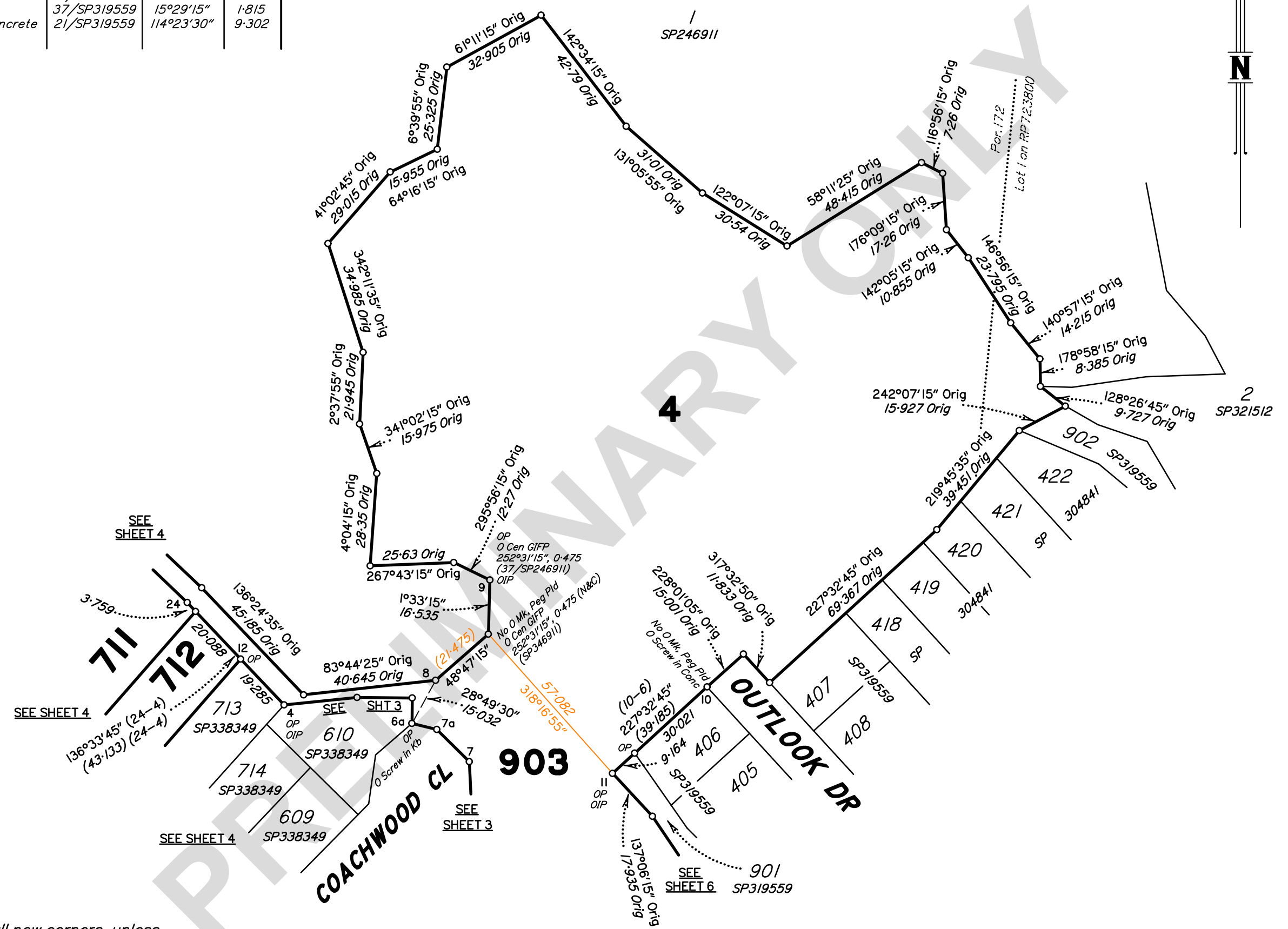
SEE SHEET 3

SEE SHEET 3

REFERENCE MARKS

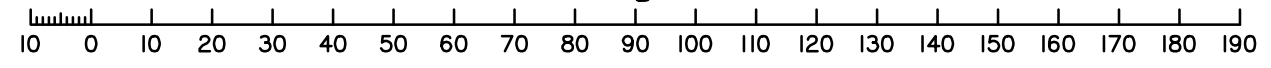
STN	TO	ORIGIN	BEARING	DIST
4	OIP	20/SP338349	40°49'	0.968
6a	O Screw in Concrete	6a/SP338349	133°25'45"	13.977
9	OIP	37/SP319559	15°29'15"	1.815
10	O Screw in Concrete	21/SP319559	114°23'30"	9.302

0
50mm
100mm
150mm

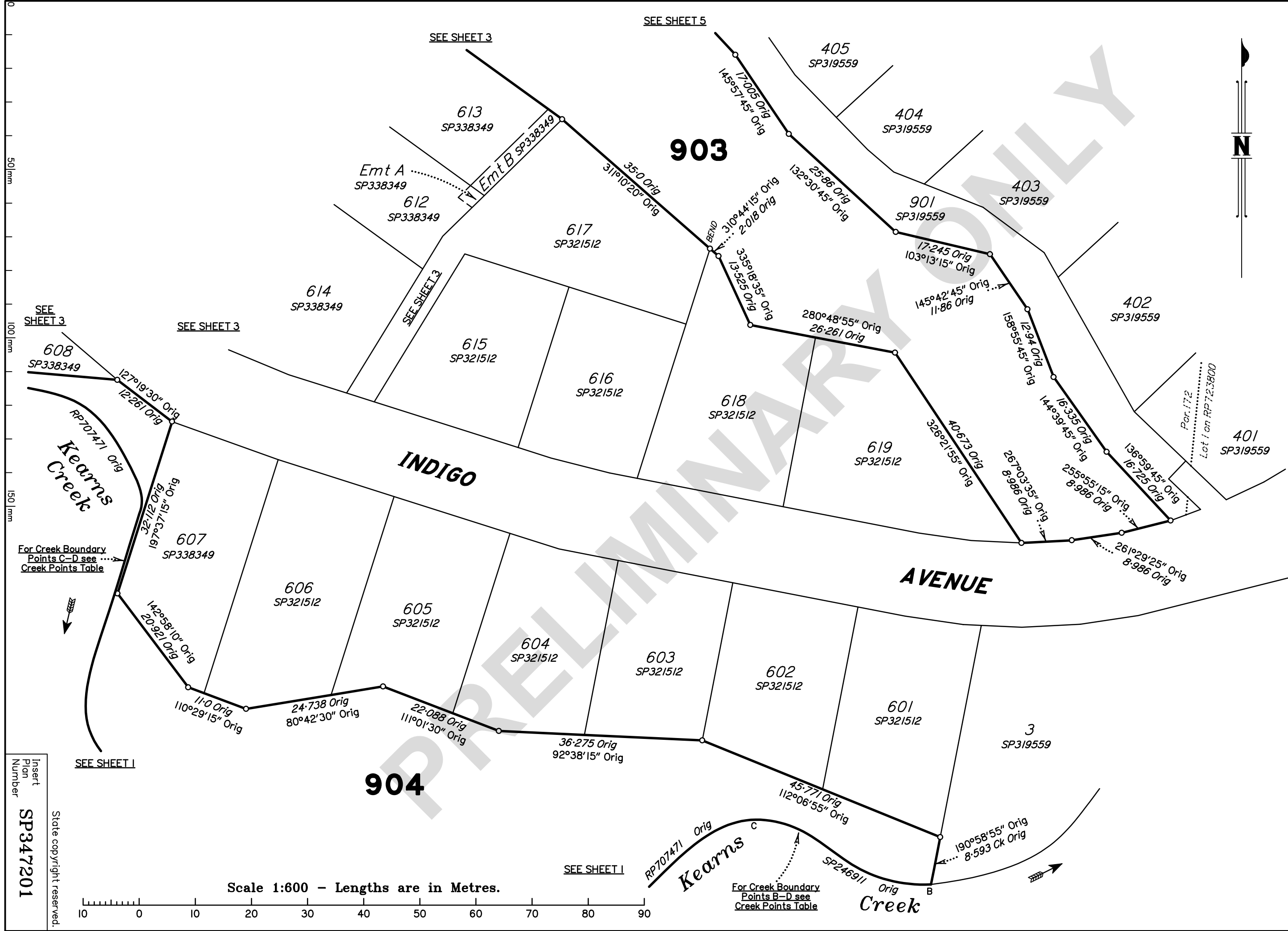


Peg placed at all new corners, unless otherwise stated.

Scale 1:1250 - Lengths are in Metres.



Insert Plan Number
SP347201
State copyright reserved.



SEE SHEET 5

SEE SHEET 3

903

Emt A
SP338349

613
SP338349

612
SP338349

617
SP321512

614
SP338349

615
SP321512

616
SP321512

618
SP321512

619
SP321512

402
SP319559

403
SP319559

404
SP319559

405
SP319559

401
SP319559

INDIGO

AVENUE

904

607
SP338349

606
SP321512

605
SP321512

604
SP321512

603
SP321512

602
SP321512

601
SP321512

3
SP319559

SEE SHEET 3

608
SP338349

SEE SHEET 3

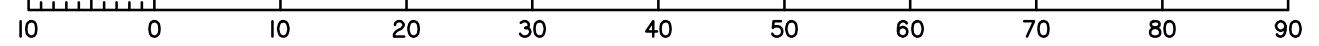
For Creek Boundary
Points C-D see
Creek Points Table

SEE SHEET 1

SEE SHEET 1

For Creek Boundary
Points B-D see
Creek Points Table

Scale 1:600 - Lengths are in Metres.



Insert
Plan
Number
SP347201
State copyright reserved.