


Drainage Pipe U/G	—————
Sub-surface Drain
Flushing Point	○ I.O.
Top of Bank	— — —
Toe of Bank	— — —
Change of Grade	- - - - -

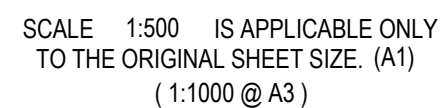
RPS AAP Consulting Pty Ltd (ACN 117 883 111) has surveyed the surface and invert levels of the stormwater drains shown on this plan. The drains have been surveyed in accordance with the requirements of the Development Manual and, to the best of our knowledge and belief, the important notes below, are accurate.



 Authorised Delegate
 12/12/2022 Date

1. This plan was prepared for the sole purposes of the client for the specific purpose of recording the infrastructure for the Cairns Regional Council. This plan is strictly limited to the Purpose and does not apply directly or indirectly and will not be used for any other application, purpose, use or matter. The plan is presented without the assumption of a duty of care to any other person (other than the Client) ("Third Party") and may not be relied on by Third Party.
2. RPS AAP Consulting Pty Ltd will not be liable (in negligence or otherwise) for any direct or indirect loss, damage, liability or claim arising out of incidental to:
 - A. Third Party publishing, using or relying on the plan;

- | | |
|--|--|
| <p>RPS AAP Consulting Pty Ltd relying on information provided to it by the Client or a Third Party where the information is incorrect, incomplete, inaccurate, out-of-date or unreasonable</p> | <p>3. Without limiting paragraph 1 or 2 above, this plan may not be copied, distributed, or reproduced by any process unless this note is clearly displayed on the plan.</p> |
| <p>C. any inaccuracies or other faults with information or data sourced from a Third Party.</p> | <p>4. Scale shown is correct for the original plan and any copies of this plan should be verified by checking against the base scale.</p> |
| <p>D. RPS AAP Consulting Pty Ltd relying on surface indicators that are incorrect or inaccurate</p> | <p>5. Size and type of stormwater pipes have been obtained from information from constructing contractor and have not been verified. All pipes are round concrete unless shown otherwise. Other information has been obtained from design and construction information [provided by Third Parties] and should be checked before use.</p> |
| <p>E. The Client or any Third Party not verifying information in this plan where recommended by RPS AAP Consulting Pty Ltd;</p> | <p>6. The positions of some services shown on this plan have been exaggerated for drawing clarity purposes. Dimensions shown take precedence over casted position</p> |
| <p>F. The accuracy, reliability, suitability or completeness of any representations or estimates made or relied on by RPS AAP Consulting Pty Ltd in this plan.</p> | |

3. Without limiting paragraph 1 or 2 above, this plan may not be copied, distributed, or reproduced by any process unless this note is clearly displayed on the plan.
4. Scale shown is correct for the original plan and any copies of this plan should be verified by checking against the bar scale.
5. Size and type of stormwater pipes have been obtained from information from constructing contractor and have not been verified. All pipes are round concrete unless shown otherwise. (Other information has been obtained from design and construction information [provided by Third Parties] and should be checked before use.
6. The positions of some services shown on this plan have been exaggerated for drawing clarity purposes. Dimensions shown take precedence over scaled position.



AMENDMENTS	RPS CLIENT MANAGER	CHECKED
	D Gargett	
	SURVEYED	
	DCW	Nov 2022
	COMPILED	
	MDW	
CAD REF 9009-127.DWG XR 9009-124.DWG	SHEET 1 OF SHEETS 1	SHEET SIZE A1

RPS AAP Consulting Pty Ltd
ACN 117 883 173
135 Abbott St
PO Box 1949
CAIRNS QLD 4870
T +61 7 4031 1336
F +61 7 4031 2942
W rpsgroup.com



© COPYRIGHT PROTECTS THIS PLAN.
Unauthorised reproduction or amendment not permitted. Please contact the author.

SCALE	DATE	DRAWING NO.	ISSUED BY
1:500	9/12/22	9009-127	