

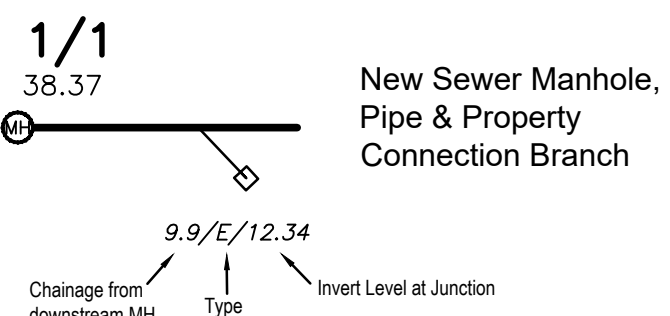
NOTES
Level Datum: AHD DERIVED
Origin of Levels: PSM 105067
RL 35.335 AHD-D

MGA Zone 55 - Ground
Vide GNSS obs

Origin of Coordinates: PSM 185199
E 363534.554
N 8119624.185


ANY PART OF THE PROPERTY
CONNECTION BRANCH WITHIN
LOTS 608, 609, 614, 713 & 714 IS
OWNED BY THE PROPERTY OWNER

LEGEND



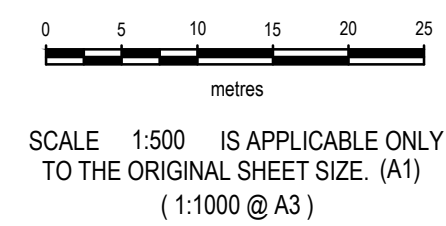
CERTIFICATION



RPS AAP Consulting Pty Ltd (ACN 117 883 173), certifies that the locations, surfaces and invert levels of the sewerage infrastructure on this plan have been surveyed in accordance with the requirements of the FNQROC Development Manual and, to the best of our knowledge and subject to the Important Note below, are accurate.

 Authorised Delegate
12/12/2022 Date

IMPORTANT NOTE

- This plan was prepared for the sole purposes of the client for the specific purpose of recording the infrastructure for the Cairns Regional Council. This plan is strictly limited to the Purpose and does not apply directly or indirectly and will not be used for any other application, purpose, use or matter. The plan is presented without the assumption of a duty of care to any other person (other than the Client) ("Third Party") and may not be relied on by Third Party.
- RPS AAP Consulting Pty Ltd will not be liable (in negligence or otherwise) for any direct or indirect loss, damage, liability or claim arising out of or incidental to:
 - Third Party publishing, using or relying on the plan;
 - RPS AAP Consulting Pty Ltd relying on information provided to it by the Client or a Third Party where the information is incorrect, incomplete, inaccurate, out-of-date or unreasonable;
- Without limiting paragraph 1 or 2 above, this plan may not be copied, distributed, or reproduced by any process unless this note is clearly displayed on the plan.
- any inaccuracies or other faults with information or data sourced from a Third Party;
- RPS AAP Consulting Pty Ltd relying on surface indicators that are incorrect or inaccurate;
- the Client or any Third Party not verifying information in this plan where recommended by RPS AAP Consulting Pty Ltd;
- lodgement of this plan with any local authority against the recommendation of RPS AAP Consulting Pty Ltd;
- the accuracy, reliability, suitability or completeness of any approximations or estimates made or referred to by RPS AAP Consulting Pty Ltd in this plan.
- The positions of some services shown on this plan have been exaggerated for drawing clarity purposes. Dimensions shown take precedence over scaled position.
- Scale shown is correct for the original plan and any copies of this plan should be verified by checking against the bar scale.
- Type and size of mains, locations and levels of house connection branches and ends have been provided by the constructing contractor and have not been verified. Other information has been obtained from design and construction information provided by Third Parties and should be checked before use.
- The positions of some services shown on this plan have been exaggerated for drawing clarity purposes. Dimensions shown take precedence over scaled position.



| | | | | | | | | | | |
|--|--|--------------------|--|---|--|--|----------|----------|---|-------|
| AMENDMENTS | | RPS CLIENT MANAGER | | CHECKED | <div>WESTERLY PROJECTS PTY LTD</div> <div>THE OUTLOOK STAGE 6B/7A</div> <div>AS CONSTRUCTED SEWER RETICULATION</div> | RPS AAP Consulting Pty Ltd ACN 117 883 173 135 Abbott St PO Box 1949 CAIRNS QLD 4870 T +61 7 4031 1336 F +61 7 4031 2942 W rpsgroup.com | | |  | |
| | | D Garget | |  | | | | | | |
| | | SURVEYED | | | | | | | | |
| | | DCW | | Nov 2022 | | | | | | |
| CAD REF 9009-126.DWG XR 9009-124.DWG | | COMPILED | | | | © COPYRIGHT PROTECTS THIS PLAN. Unauthorised reproduction or amendment not permitted. Please contact the author. | | | | |
| | | MDW | | | | | | | | |
| | | SHEET 1 | | SHEET SIZE | | | | | | |
| | | OF | | | A1 | SCALE | | DATE | DRAWING NO. | ISSUE |
| | | SHEETS 1 | | | | 1:500 | 13/12/22 | 9009-126 | | |



RPS AAP Consulting Pty Ltd
ACN 117 883 173
135 Abbott St
PO Box 1949
CAIRNS QLD 4870
T +61 7 4031 1336
F +61 7 4031 2942
W rpsgroup.com