

House and Land



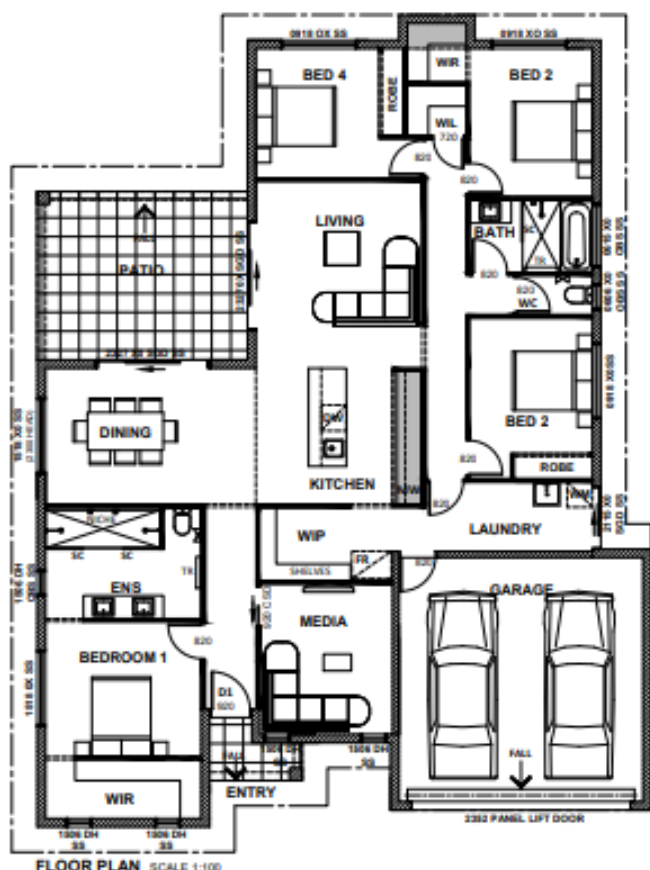
Lot 3001 Sweetgum Court The Edgewater 232

Price from **\$629,000**

4 2 2



Garage area	36.56m ²
Patio area	20.00m ²
Entry area	2.58m ²
Living	173.33m ²
Total area	232m²
Land area	674m²



Freedom Inclusions

- Tiles to living area, patio & entry
- Carpet to bedrooms and media room
- Custom kitchen with handle less overhead cupboards, bulkhead and stone Benchtops
- Kitchen with overhead cupboards, bulkhead, and soft close cabinetry
- Generous lighting (LED) and power point allowance
- Architectural plumbing fixtures with a choice of chrome or black tapware
- Choice of chrome or lever handles to internal doors
- Flyscreens throughout
- Air-conditioning throughout
- Smooth coat texture finish render
- Fully insulated including patio and entry
- Exposed aggregate driveway
- Stainless appliances



Plans and Images are for illustration purposes only. Floor plan and elevation as shown in this brochure are an artist's impression only and do not form any part of the contract to build. Standard plans and specifications take precedence over any design, elevation or brochure. These designs are copyright to Cougar Homes Pty Ltd - QBCC No. 1033596

Chloe

0437 604 446

chloe@cougarhomes.com.au

Sue

0423 527 829

sue@cougarhomes.com.au

Paula

0409 267 756

paula@cougarhomes.com.au

Cnr Walker Road & Newland Court
Bentley Park, Cairns Qld 4869
PO Box 4954, Cairns Qld 4870

Phone 07 4051 4422
enquiries@cherrybrookland.com.au
www.cherrybrookland.com.au

