



**RIVERPARKS  
STAGE 26**  
For  
**NORTHERLY PROJECTS  
PTY LTD**

**IMPORTANT NOTES:**  
(These notes are an integral part of this plan)  
This plan has been prepared for **NORTHERLY PROJECTS PTY LTD** for the purposes of **A Disclosure Plan Under the Land Sales Act 1984 (as amended)**.  
It is not to be used by any other person or corporation or for any other purposes and is subject to the following limitations:

Please refer to the approved Development Application for conditions relating to the LOT and to approved Operational Works drawings for services location and possible easements.

**THESE DESIGNS AND DRAWINGS ARE COPYRIGHT AND ARE NOT TO BE USED OR REPRODUCED WITHOUT THE WRITTEN PERMISSION OF VERIS**

**Data Sources**  
Cadastral Boundaries: 431132-LCM01 (E).dwg  
Engineering Design: 202664 Stg 26 Design.dwg  
Final Surface Contours: 202664 Stg 26 Design.dwg  
Pre-development Surface: 431132 DS02(d).dwg

Issue	Revisions	Date	Drawn
A	Original	11/11/2021	MJT

Locality: Upper Caboolture  
Local Authority: MBRC  
Horizontal Meridian: MGA Zone 56  
Vertical Level Datum: AHD D  
Scale: 1:250 @ A4  
Designed: Veris  
Drawn: MJT 11/11/2021  
Checked: MJT 11/11/2021  
Plot Date: 11 Nov, 2021  
Comp File Ref: 431132-St26-DP(A).dwg

**DISCLOSURE PLAN**  
of Proposed **LOT 2601**  
currently being part of  
**Lot 902 on SP303123**



**veris**

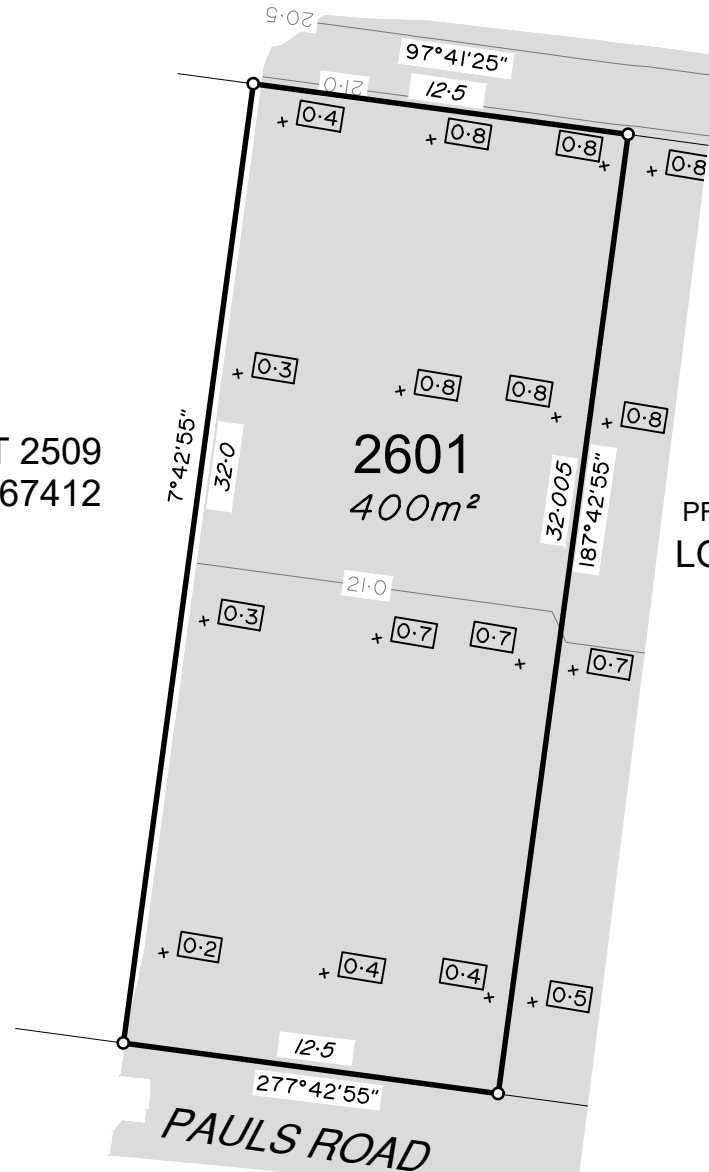
BRISBANE (07) 3666 4700 WHITSUNDAYS (07) 4945 6800  
MACKAY (07) 4957 9700 CAIRNS (07) 4252 9400

veris.com.au  
ACN 615 735 727  
Veris Australia Pty Ltd

Drawing No 431132-26-DP 2601 Issue A

**FUTURE PROPOSED  
DEVELOPMENT**

**LOT 2509  
SP267412**



**PROPOSED  
LOT 2602**

**LEGEND**

Final surface contours based on A.H.D. datum at an interval of 0.5m, shown as: ——— 9.5 ———

Where applicable, areas to be filled are shown as:

Depth of fill, in metres, shown as:- + [ ]

**ADDITIONAL NOTES:**

The LOT dimensions and area shown hereon are subject to final field survey and also to the requirements of Council and any other authority which may have requirements under any relevant legislation

Final surface contours shown hereon have been supplied by Covey Associates Pty Ltd.

Location of retaining walls are as shown on Engineering design drawings. Their as-constructed location may differ from their design location. Retaining wall heights have been supplied by Covey Associates Pty Ltd.

Compaction of any fill material placed on this site shall be completed to level one inspection and testing services in accordance with AS3798-2007.

Depth of fill values are calculated to the lower of the pre-development surface and the ground surface from Survey.

Copyright © Veris Australia Pty Ltd 10/11/2021.

12.5m 25m 37.5m  
50 mm 100 mm 150 mm SCALE BAR



**RIVERPARKS  
STAGE 26**  
For  
**NORTHERLY PROJECTS  
PTY LTD**

**IMPORTANT NOTES:**  
(These notes are an integral part of this plan)  
This plan has been prepared for **NORTHERLY PROJECTS PTY LTD** for the purposes of **A Disclosure Plan Under the Land Sales Act 1984 (as amended)**.  
It is not to be used by any other person or corporation or for any other purposes and is subject to the following limitations:

Please refer to the approved Development Application for conditions relating to the LOT and to approved Operational Works drawings for services location and possible easements.

**THESE DESIGNS AND DRAWINGS ARE COPYRIGHT AND ARE NOT TO BE USED OR REPRODUCED WITHOUT THE WRITTEN PERMISSION OF VERIS**

**Data Sources**  
Cadastral Boundaries: 431132-LCM01 (E).dwg  
Engineering Design: 202664 Sig 26 Design.dwg  
Final Surface Contours: 202664 Sig 26 Design.dwg  
Pre-development Surface: 431132 DS02(d).dwg

Issue	Revisions	Date	Drawn
A	Original	11/11/2021	MJT

Locality: Upper Caboolture  
Local Authority: MBRC  
Horizontal Meridian: MGA Zone 56  
Vertical Level Datum: AHD D  
Scale: 1:250 @ A4  
Designed: Veris  
Drawn: MJT 11/11/2021  
Checked: MJT 11/11/2021  
Plot Date: 11 Nov, 2021  
Comp File Ref: 431132-SI26-DP(A).dwg

**DISCLOSURE PLAN**  
of Proposed LOT 2602  
currently being part of  
Lot 902 on SP303123

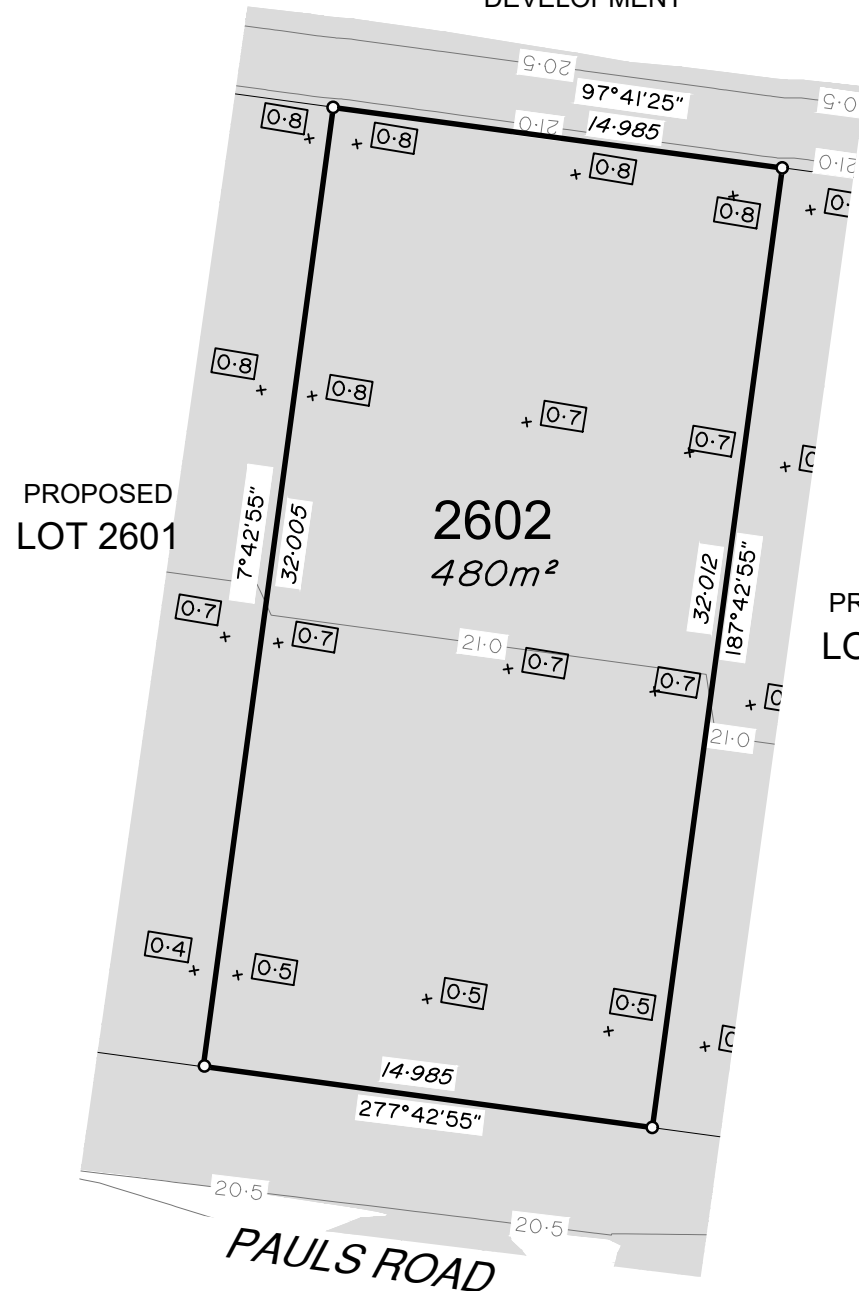


**BRISBANE** (07) 3666 4700  
**WHITSUNDAYS** (07) 4945 6800  
**MACKEY** (07) 4957 9700  
**CAIRNS** (07) 4252 9400

veris.com.au  
ACN 615 735 727  
Veris Australia Pty Ltd

Drawing No: 431132-26-DP 2602  
Issue: A

**FUTURE PROPOSED  
DEVELOPMENT**



**LEGEND**

Final surface contours based on A.H.D. datum at an interval of 0.5m, shown as: 9.5

Where applicable, areas to be filled are shown as:

Depth of fill, in metres, shown as: 1.1

**PROPOSED  
LOT 2603**

**ADDITIONAL NOTES:**

The LOT dimensions and area shown hereon are subject to final field survey and also to the requirements of Council and any other authority which may have requirements under any relevant legislation

Final surface contours shown hereon have been supplied by Covey Associates Pty Ltd.

Location of retaining walls are as shown on Engineering design drawings. Their as-constructed location may differ from their design location. Retaining wall heights have been supplied by Covey Associates Pty Ltd.

Compaction of any fill material placed on this site shall be completed to level one inspection and testing services in accordance with AS3798-2007.

Depth of fill values are calculated to the lower of the pre-development surface and the ground surface from Survey.

Copyright © Veris Australia Pty Ltd 10/11/2021.

**PAULS ROAD**

0 12.5m 25m 37.5m  
50 mm 100 mm 150 mm SCALE BAR



**RIVERPARKS  
STAGE 26**  
For  
**NORTHERLY PROJECTS  
PTY LTD**

**IMPORTANT NOTES:**  
(These notes are an integral part of this plan)  
This plan has been prepared for **NORTHERLY PROJECTS PTY LTD** for the purposes of **A Disclosure Plan Under the Land Sales Act 1984 (as amended)**.  
It is not to be used by any other person or corporation or for any other purposes and is subject to the following limitations:

Please refer to the approved Development Application for conditions relating to the LOT and to approved Operational Works drawings for services location and possible easements.

THESE DESIGNS AND DRAWINGS ARE COPYRIGHT AND ARE NOT TO BE USED OR REPRODUCED WITHOUT THE WRITTEN PERMISSION OF VERIS

**Data Sources**  
Cadastral Boundaries: 431132-LCM01 (E).dwg  
Engineering Design: 202664 Sig 26 Design.dwg  
Final Surface Contours: 202664 Sig 26 Design.dwg  
Pre-development Surface: 431132 DS02(d).dwg

Issue	Revisions	Date	Drawn
A	Original	11/11/2021	MJT

Locality: Upper Caboolture  
Local Authority: MBRC  
Horizontal Meridian: MGA Zone 56  
Vertical Level Datum: AHD D  
Scale: 1:250 @ A4  
Designed: Veris  
Drawn: MJT 11/11/2021  
Checked: MJT 11/11/2021  
Plot Date: 11 Nov, 2021  
Comp File Ref: 431132-SI26-DP(A).dwg

**DISCLOSURE PLAN**  
of Proposed Lot 2603  
currently being part of  
Lot 902 on SP303123  
& Lot 1 on RP166898

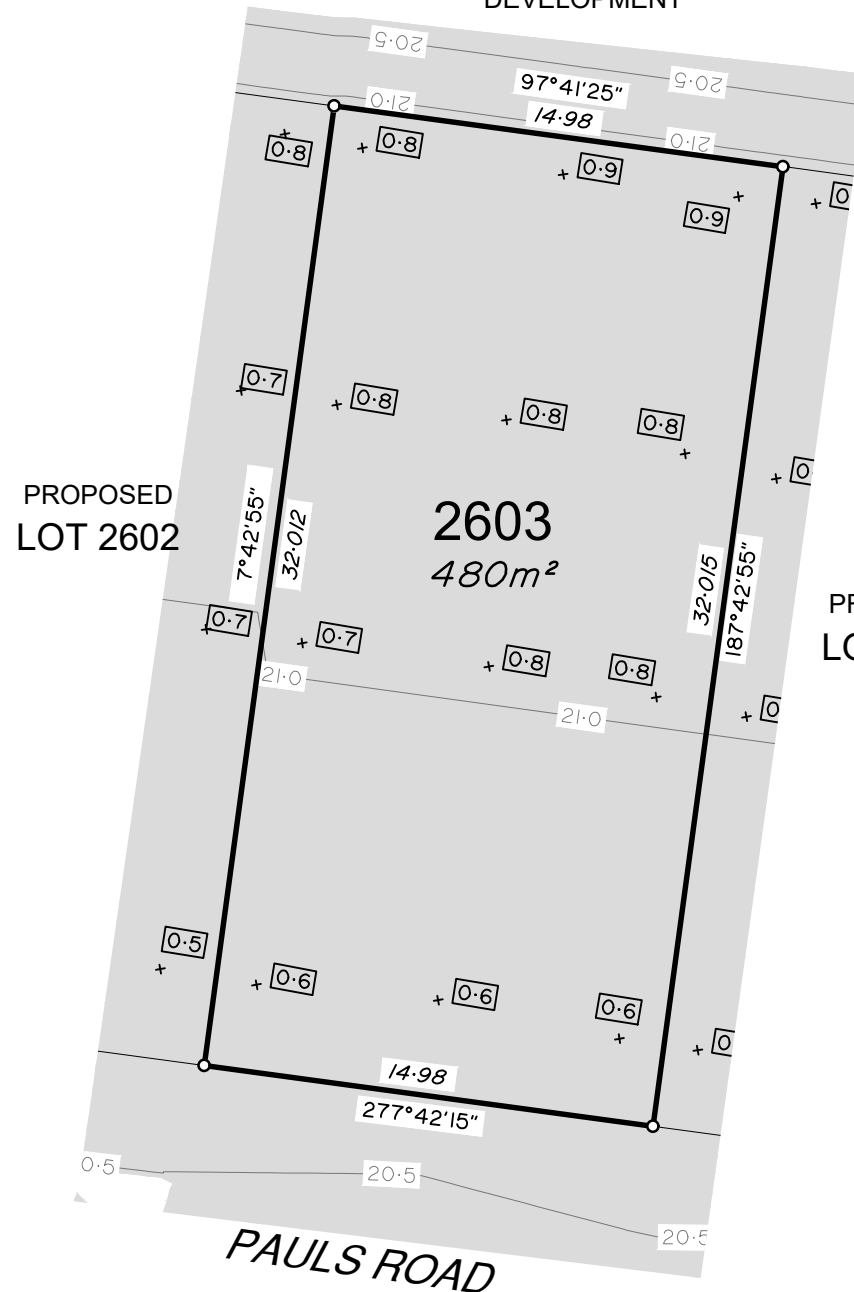


BRISBANE (07) 3666 4700 WHITSUNDAYS (07) 4945 6800  
MACKEY (07) 4957 9700 CAIRNS (07) 4252 9400

veris.com.au  
ACN 615 735 727  
Veris Australia Pty Ltd

Drawing No 431132-26-DP 2603 Issue A

**FUTURE PROPOSED  
DEVELOPMENT**



**LEGEND**

Final surface contours based on A.H.D. datum at an interval of 0.5m, shown as: 9.5

Where applicable, areas to be filled are shown as:

Depth of fill, in metres, shown as: 1.1

**PROPOSED  
LOT 2604**

**ADDITIONAL NOTES:**

The LOT dimensions and area shown hereon are subject to final field survey and also to the requirements of Council and any other authority which may have requirements under any relevant legislation

Final surface contours shown hereon have been supplied by Covey Associates Pty Ltd.

Location of retaining walls are as shown on Engineering design drawings. Their as-constructed location may differ from their design location. Retaining wall heights have been supplied by Covey Associates Pty Ltd.

Compaction of any fill material placed on this site shall be completed to level one inspection and testing services in accordance with AS3798-2007.

Depth of fill values are calculated to the lower of the pre-development surface and the ground surface from Survey.

Copyright © Veris Australia Pty Ltd 10/11/2021.





**RIVERPARKS  
STAGE 26**  
For  
**NORTHERLY PROJECTS  
PTY LTD**

**IMPORTANT NOTES:**  
(These notes are an integral part of this plan)  
This plan has been prepared for **NORTHERLY PROJECTS PTY LTD** for the purposes of **A Disclosure Plan Under the Land Sales Act 1984 (as amended)**.  
It is not to be used by any other person or corporation or for any other purposes and is subject to the following limitations:

Please refer to the approved Development Application for conditions relating to the LOT and to approved Operational Works drawings for services location and possible easements.

THESE DESIGNS AND DRAWINGS ARE COPYRIGHT AND ARE NOT TO BE USED OR REPRODUCED WITHOUT THE WRITTEN PERMISSION OF VERIS

**Data Sources**  
Cadastral Boundaries: 431132-LCM01 (E).dwg  
Engineering Design: 202664 Sig 26 Design.dwg  
Final Surface Contours: 202664 Sig 26 Design.dwg  
Pre-development Surface: 431132 DS02(d).dwg

Issue	Revisions	Date	Drawn
A	Original	11/11/2021	MJT

Locality: Upper Caboolture  
Local Authority: MBRC  
Horizontal Meridian: MGA Zone 56  
Vertical Level Datum: AHD D  
Scale: 1:250 @ A4  
Designed: Veris  
Drawn: MJT 11/11/2021  
Checked: MJT 11/11/2021  
Plot Date: 11 Nov, 2021  
Comp File Ref: 431132-SI26-DP(A).dwg

**DISCLOSURE PLAN**  
of Proposed Lot 2604  
currently being part of  
Lot 1 on RP166898



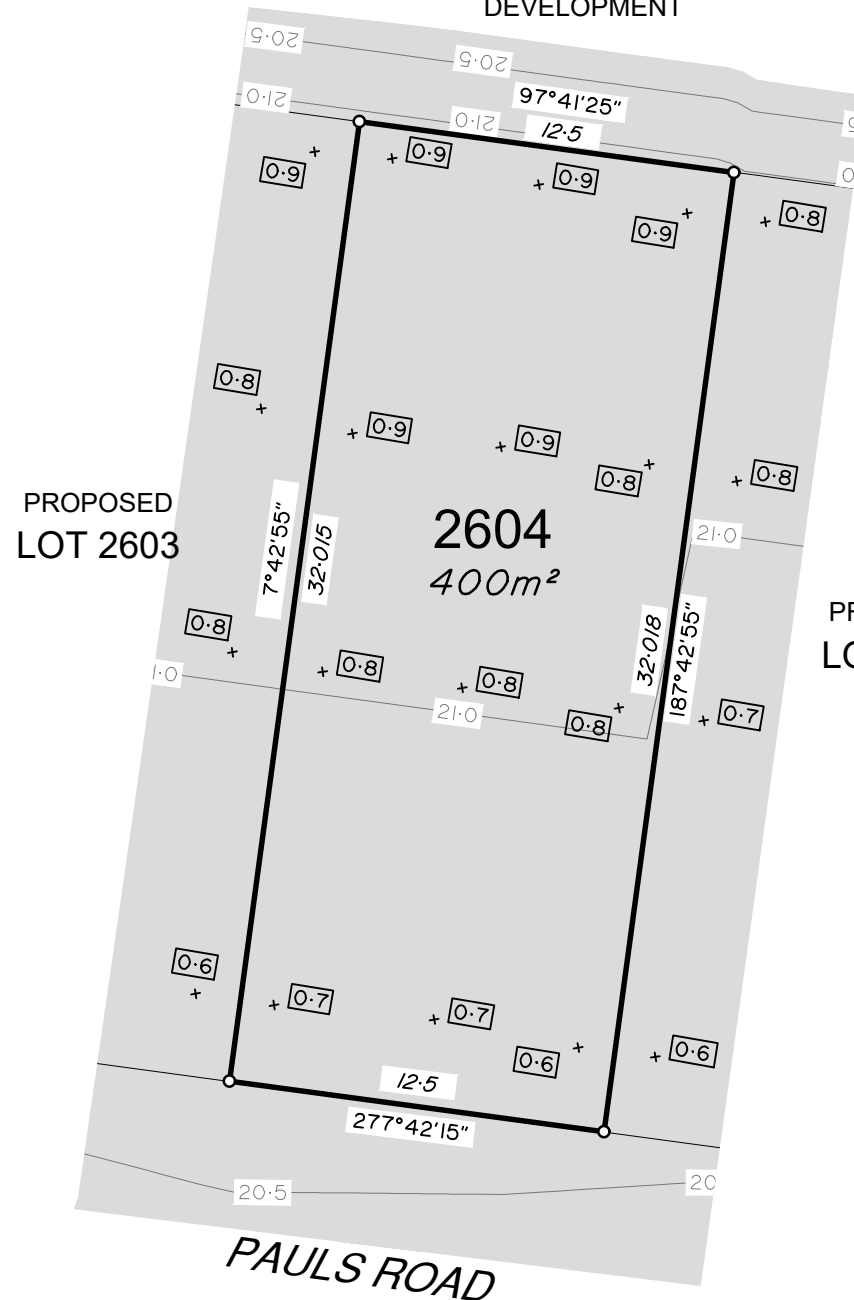
**veris**

BRISBANE (07) 3666 4700 WHITSUNDAYS (07) 4945 6800  
MACKAY (07) 4957 9700 CAIRNS (07) 4252 9400

veris.com.au  
ACN 615 735 727  
Veris Australia Pty Ltd

Drawing No 431132-26-DP 2604 Issue A

**FUTURE PROPOSED  
DEVELOPMENT**



**LEGEND**

Final surface contours based on A.H.D. datum at an interval of 0.5m, shown as: 9.5

Where applicable, areas to be filled are shown as:

Depth of fill, in metres, shown as: 1.1

**PROPOSED  
LOT 2605**

**ADDITIONAL NOTES:**

The LOT dimensions and area shown hereon are subject to final field survey and also to the requirements of Council and any other authority which may have requirements under any relevant legislation

Final surface contours shown hereon have been supplied by Covey Associates Pty Ltd.

Location of retaining walls are as shown on Engineering design drawings. Their as-constructed location may differ from their design location. Retaining wall heights have been supplied by Covey Associates Pty Ltd.

Compaction of any fill material placed on this site shall be completed to level one inspection and testing services in accordance with AS3798-2007.

Depth of fill values are calculated to the lower of the pre-development surface and the ground surface from Survey.

Copyright © Veris Australia Pty Ltd 10/11/2021.

**PAULS ROAD**





**RIVERPARKS  
STAGE 26**  
For  
**NORTHERLY PROJECTS  
PTY LTD**

**IMPORTANT NOTES:**  
(These notes are an integral part of this plan)  
This plan has been prepared for **NORTHERLY PROJECTS PTY LTD** for the purposes of **A Disclosure Plan Under the Land Sales Act 1984 (as amended)**.  
It is not to be used by any other person or corporation or for any other purposes and is subject to the following limitations:

Please refer to the approved Development Application for conditions relating to the LOT and to approved Operational Works drawings for services location and possible easements.

THESE DESIGNS AND DRAWINGS ARE COPYRIGHT AND ARE NOT TO BE USED OR REPRODUCED WITHOUT THE WRITTEN PERMISSION OF VERIS

**Data Sources**  
Cadastral Boundaries: 431132-LCM01 (E).dwg  
Engineering Design: 202664 Sig 26 Design.dwg  
Final Surface Contours: 202664 Sig 26 Design.dwg  
Pre-development Surface: 431132 DS02(d).dwg

Issue	Revisions	Date	Drawn
A	Original	11/11/2021	MJT

Locality: Upper Caboolture  
Local Authority: MBRC  
Horizontal Meridian: MGA Zone 56  
Vertical Level Datum: AHD D  
Scale: 1:250 @ A4  
Designed: Veris  
Drawn: MJT 11/11/2021  
Checked: MJT 11/11/2021  
Plot Date: 11 Nov, 2021  
Comp File Ref: 431132-SI26-DP(A).dwg

**DISCLOSURE PLAN**  
of Proposed Lot 2605  
currently being part of  
Lot 1 on RP166898



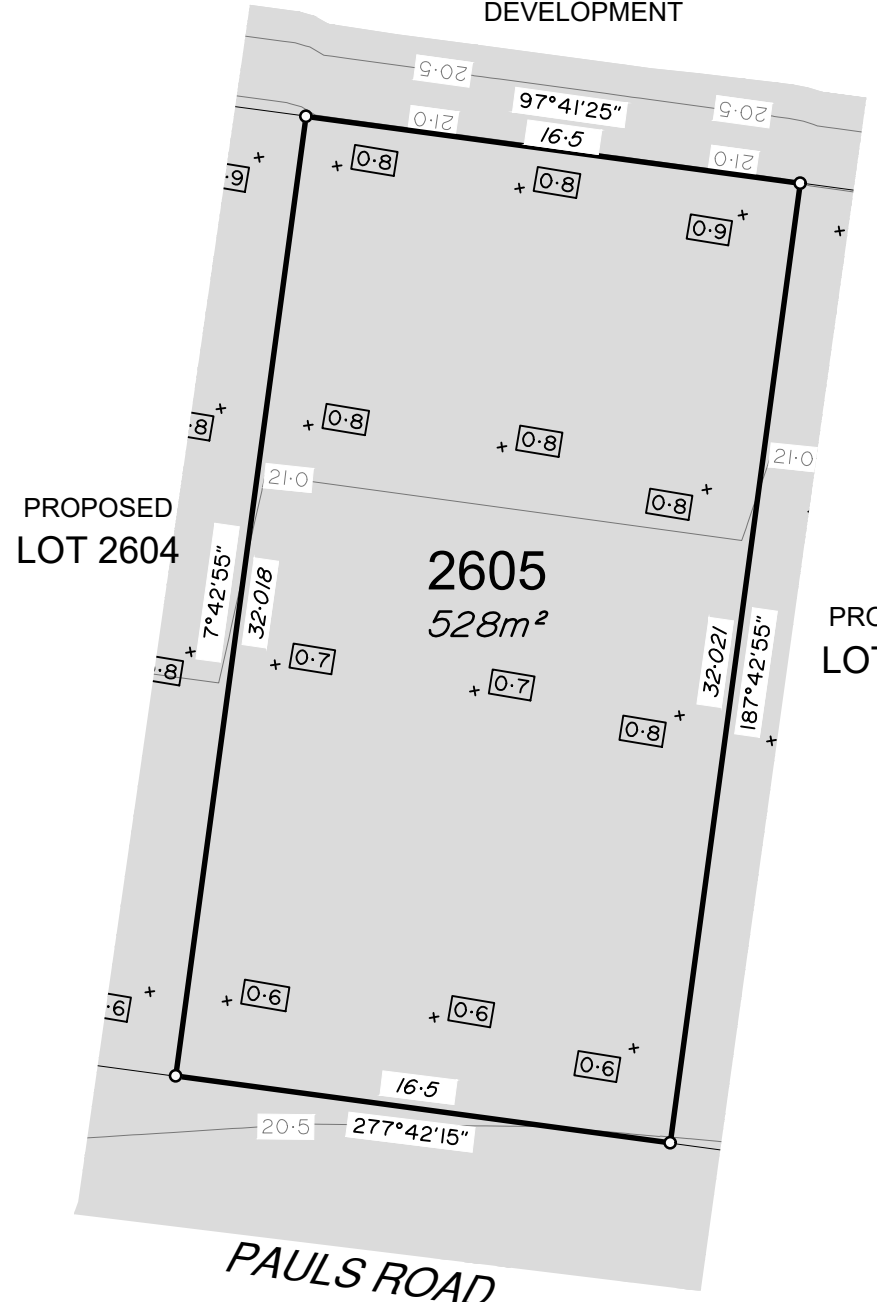
BRISBANE (07) 3666 4700 WHITSUNDAYS (07) 4945 6800

MACCKAY (07) 4957 9700 CAIRNS (07) 4252 9400

veris.com.au  
ACN 615 735 727  
Veris Australia Pty Ltd

Drawing No 431132-26-DP 2605 Issue A

**FUTURE PROPOSED  
DEVELOPMENT**



**LEGEND**

Final surface contours based on A.H.D. datum at an interval of 0.5m, shown as: 9.5

Where applicable, areas to be filled are shown as:

Depth of fill, in metres, shown as: 1.1

**PROPOSED  
LOT 2606**

**ADDITIONAL NOTES:**

The LOT dimensions and area shown hereon are subject to final field survey and also to the requirements of Council and any other authority which may have requirements under any relevant legislation

Final surface contours shown hereon have been supplied by Covey Associates Pty Ltd.

Location of retaining walls are as shown on Engineering design drawings. Their as-constructed location may differ from their design location. Retaining wall heights have been supplied by Covey Associates Pty Ltd.

Compaction of any fill material placed on this site shall be completed to level one inspection and testing services in accordance with AS3798-2007.

Depth of fill values are calculated to the lower of the pre-development surface and the ground surface from Survey.

Copyright © Veris Australia Pty Ltd 10/11/2021.

**PAULS ROAD**





**RIVERPARKS  
STAGE 26**  
For  
**NORTHERLY PROJECTS  
PTY LTD**

**IMPORTANT NOTES:**  
(These notes are an integral part of this plan)  
This plan has been prepared for **NORTHERLY PROJECTS PTY LTD** for the purposes of **A Disclosure Plan Under the Land Sales Act 1984 (as amended)**. It is not to be used by any other person or corporation or for any other purposes and is subject to the following limitations:

Please refer to the approved Development Application for conditions relating to the LOT and to approved Operational Works drawings for services location and possible easements.

THESE DESIGNS AND DRAWINGS ARE COPYRIGHT AND ARE NOT TO BE USED OR REPRODUCED WITHOUT THE WRITTEN PERMISSION OF VERIS

**Data Sources**  
Cadastral Boundaries: 431132-LCM01 (E).dwg  
Engineering Design: 202664 Sig 26 Design.dwg  
Final Surface Contours: 202664 Sig 26 Design.dwg  
Pre-development Surface: 431132 DS02(d).dwg

Issue	Revisions	Date	Drawn
A	Original	11/11/2021	MJT

Locality: Upper Caboolture  
Local Authority: MBRC  
Horizontal Meridian: MGA Zone 56  
Vertical Level Datum: AHD D  
Scale: 1:250 @ A4  
Designed: Veris  
Drawn: MJT 11/11/2021  
Checked: MJT 11/11/2021  
Plot Date: 11 Nov, 2021  
Comp File Ref: 431132-SI26-DP(A).dwg

**DISCLOSURE PLAN**  
of Proposed Lot 2606  
currently being part of  
Lot 1 on RP166898



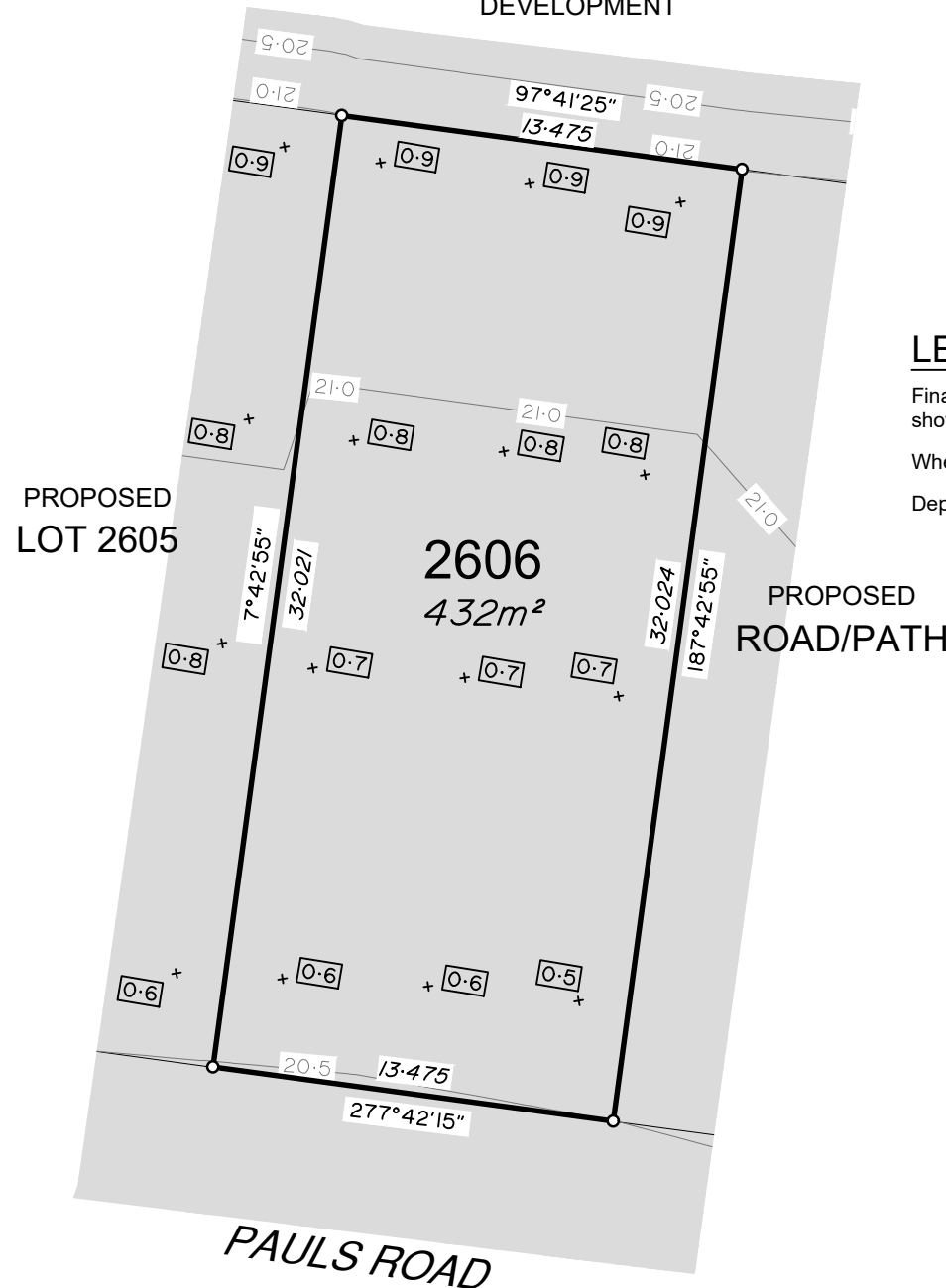
**veris**

BRISBANE (07) 3666 4700 WHITSUNDAYS (07) 4945 6800  
MACKEY (07) 4957 9700 CAIRNS (07) 4252 9400

veris.com.au  
ACN 615 735 727  
Veris Australia Pty Ltd

Drawing No 431132-26-DP 2606 Issue A

**FUTURE PROPOSED  
DEVELOPMENT**



**LEGEND**

Final surface contours based on A.H.D. datum at an interval of 0.5m, shown as: — 9.5 —

Where applicable, areas to be filled are shown as: [Grey Box]

Depth of fill, in metres, shown as:- + [Box]

**ADDITIONAL NOTES:**

The LOT dimensions and area shown hereon are subject to final field survey and also to the requirements of Council and any other authority which may have requirements under any relevant legislation

Final surface contours shown hereon have been supplied by Covey Associates Pty Ltd.

Location of retaining walls are as shown on Engineering design drawings. Their as-constructed location may differ from their design location. Retaining wall heights have been supplied by Covey Associates Pty Ltd.

Compaction of any fill material placed on this site shall be completed to level one inspection and testing services in accordance with AS3798-2007.

Depth of fill values are calculated to the lower of the pre-development surface and the ground surface from Survey.

Copyright © Veris Australia Pty Ltd 10/11/2021.

