



**RIVERPARKS  
STAGE 26**  
For  
**NORTHERLY PROJECTS  
PTY LTD**

**IMPORTANT NOTES:**  
(These notes are an integral part of this plan)  
This plan has been prepared for **NORTHERLY PROJECTS PTY LTD** for the purposes of **A Disclosure Plan Under the Land Sales Act 1984 (as amended)**.  
It is not to be used by any other person or corporation or for any other purposes and is subject to the following limitations:

Please refer to the approved Development Application for conditions relating to the LOT and to approved Operational Works drawings for services location and possible easements.

THESE DESIGNS AND DRAWINGS ARE COPYRIGHT AND ARE NOT TO BE USED OR REPRODUCED WITHOUT THE WRITTEN PERMISSION OF VERIS

**Data Sources**  
Cadastral Boundaries: 431132-LCM01 (E).dwg  
Engineering Design: 202664 Sig 26 Design.dwg  
Final Surface Contours: 202664 Sig 26 Design.dwg  
Pre-development Surface: 431132 DS02(d).dwg

Issue	Revisions	Date	Drawn	BK
A	Original	03/12/2021	BK	

Locality: Upper Caboolture  
Local Authority: Moreton Bay R.C.  
Horizontal Meridian: MGA Zone 56  
Vertical Level Datum: AHD D  
Scale: 1:250 @ A4  
Designed: Veris  
Drawn: BK 02/12/2021  
Checked: KJJ 16/12/2021  
Plot Date: 16 Dec, 2021  
Comp File Ref: 431132-SI26-DP(A).dwg

**DISCLOSURE PLAN**  
of Proposed LOT 2607  
being part of  
Lot 1 on RP166898



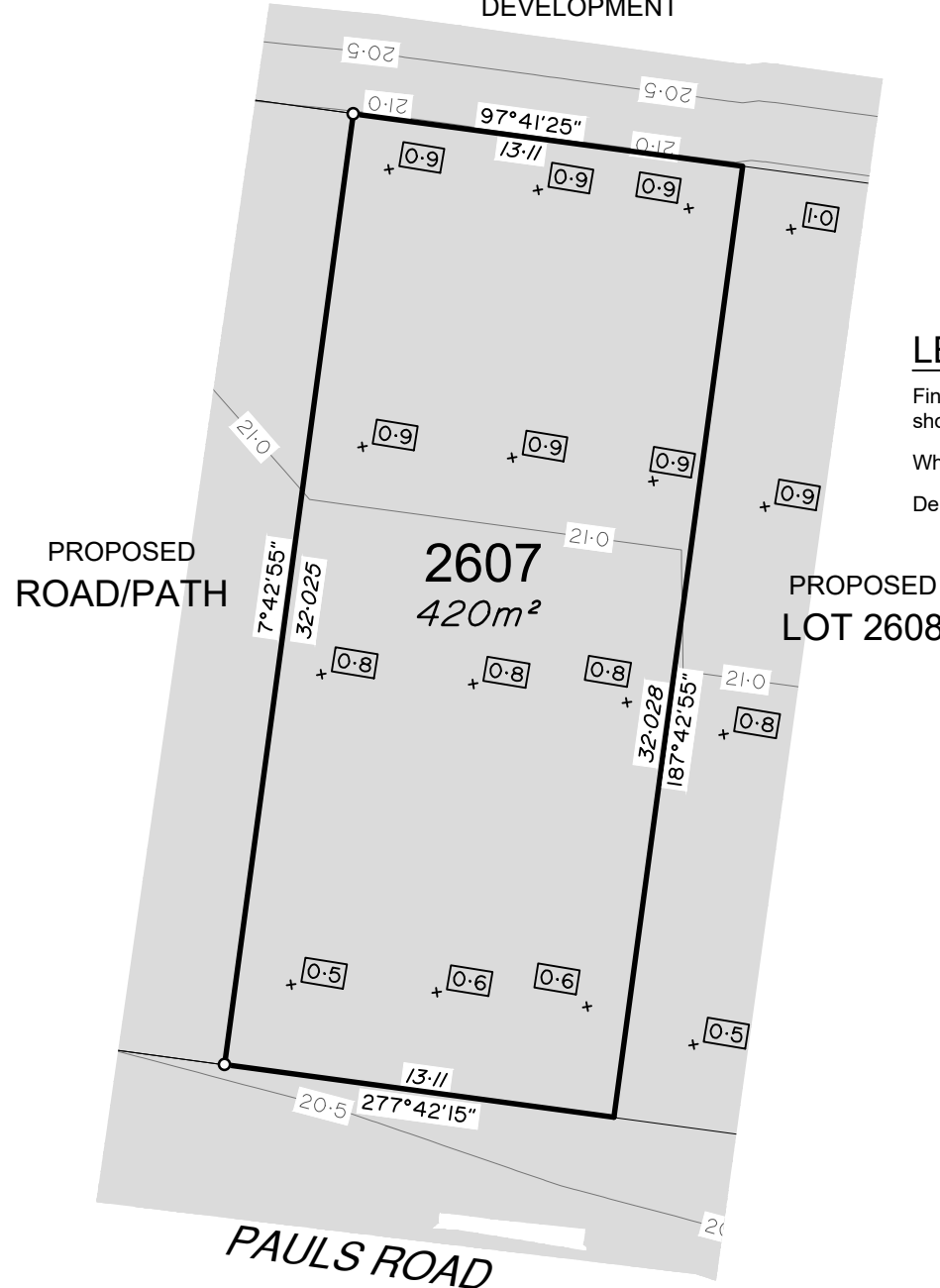
**veris**

BRISBANE (07) 3666 4700 WHITSUNDAYS (07) 4945 6800  
MACKAY (07) 4957 9700 CAIRNS (07) 4252 9400

veris.com.au  
ACN 615 735 727  
Veris Australia Pty Ltd

Drawing No 431132-26-DP 2607 Issue A

**FUTURE PROPOSED  
DEVELOPMENT**



**LEGEND**

Final surface contours based on A.H.D. datum at an interval of 0.5m, shown as: 9.5

Where applicable, areas to be filled are shown as:

Depth of fill, in metres, shown as: 1.1

**ADDITIONAL NOTES:**

The LOT dimensions and area shown hereon are subject to final field survey and also to the requirements of Council and any other authority which may have requirements under any relevant legislation

Final surface contours shown hereon have been supplied by Covey Associates Pty Ltd.

Location of retaining walls are as shown on Engineering design drawings. Their as-constructed location may differ from their design location. Retaining wall heights have been supplied by Covey Associates Pty Ltd.

Compaction of any fill material placed on this site shall be completed to level one inspection and testing services in accordance with AS3798-2007.

Depth of fill values are calculated to the lower of the pre-development surface and the ground surface from Survey.

Copyright © Veris Australia Pty Ltd 03/12/2021.

150 mm SCALE BAR



**RIVERPARKS  
STAGE 26**  
For  
**NORTHERLY PROJECTS  
PTY LTD**

**IMPORTANT NOTES:**  
(These notes are an integral part of this plan)  
This plan has been prepared for **NORTHERLY PROJECTS PTY LTD** for the purposes of **A Disclosure Plan Under the Land Sales Act 1984 (as amended)**. It is not to be used by any other person or corporation or for any other purposes and is subject to the following limitations:

Please refer to the approved Development Application for conditions relating to the LOT and to approved Operational Works drawings for services location and possible easements.

**THESE DESIGNS AND DRAWINGS ARE COPYRIGHT AND ARE NOT TO BE USED OR REPRODUCED WITHOUT THE WRITTEN PERMISSION OF VERIS**

**Data Sources**  
Cadastral Boundaries: 431132-LCM01 (E).dwg  
Engineering Design: 202664 Stg 26 Design.dwg  
Final Surface Contours: 202664 Stg 26 Design.dwg  
Pre-development Surface: 431132 DS02(d).dwg

Issue	Revisions	Date	Drawn
A	Original	03/12/2021	BK

Locality: Upper Caboolture  
Local Authority: Moreton Bay R.C.  
Horizontal Meridian: MGA Zone 56  
Vertical Level Datum: AHD D  
Scale: 1:250 @ A4  
Designed: Veris  
Drawn: BK 02/12/2021  
Checked: KJJ 16/12/2021  
Plot Date: 16 Dec, 2021  
Comp File Ref: 431132-St26-DP(A).dwg

**DISCLOSURE PLAN  
of Proposed LOT 2608  
being part of  
Lot 1 on RP166898**



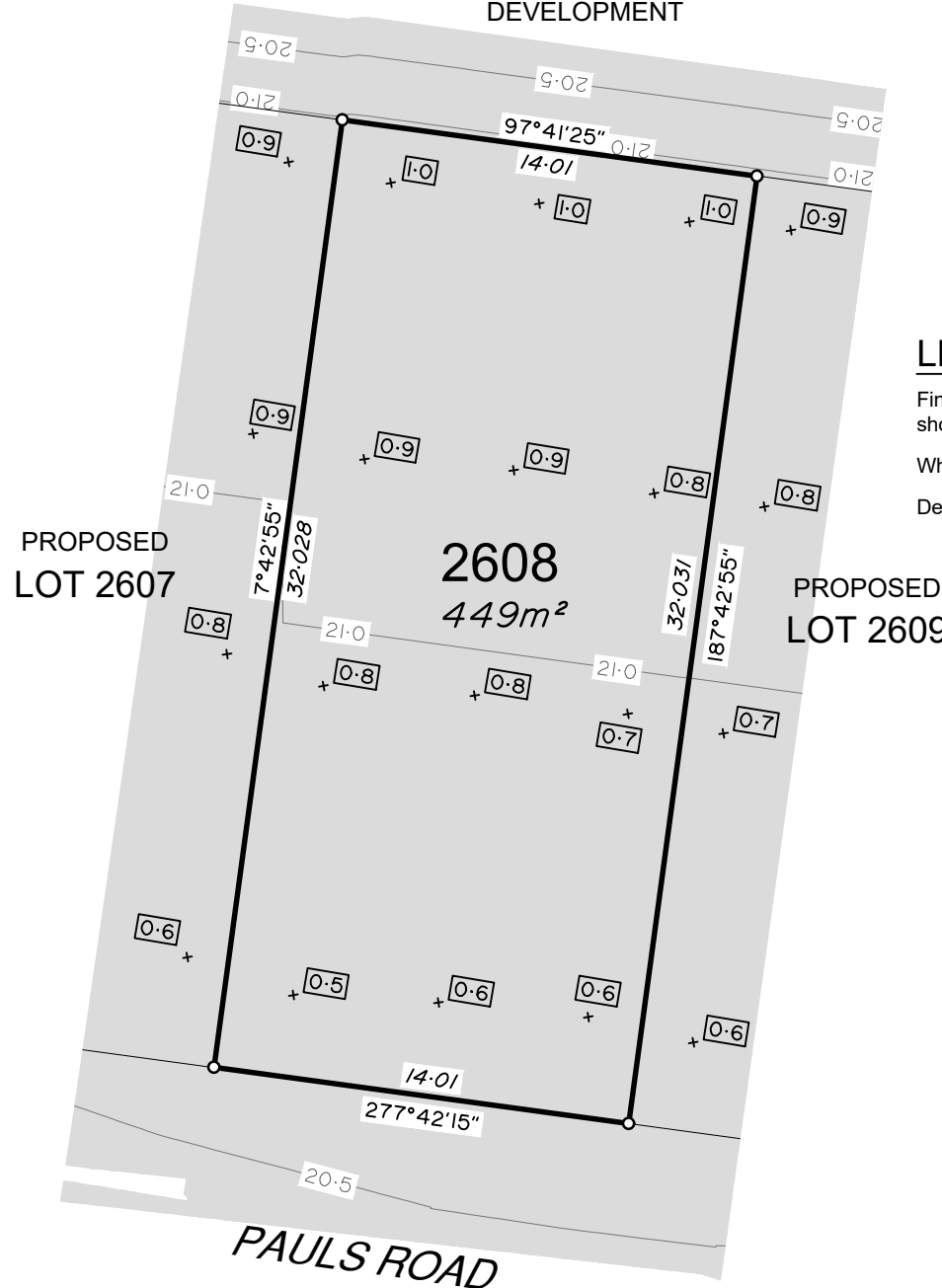
**veris**

BRISBANE (07) 3666 4700 WHITSUNDAYS (07) 4945 6800  
MACKAY (07) 4957 9700 CAIRNS (07) 4252 9400

veris.com.au  
ACN 615 735 727  
Veris Australia Pty Ltd

Drawing No Issue  
**431132-26-DP 2608 A**

**FUTURE PROPOSED  
DEVELOPMENT**



**LEGEND**

Final surface contours based on A.H.D. datum at an interval of 0.5m, shown as: 9.5

Where applicable, areas to be filled are shown as:

Depth of fill, in metres, shown as:- 1.1

**ADDITIONAL NOTES:**

The LOT dimensions and area shown hereon are subject to final field survey and also to the requirements of Council and any other authority which may have requirements under any relevant legislation

Final surface contours shown hereon have been supplied by Covey Associates Pty Ltd.

Location of retaining walls are as shown on Engineering design drawings. Their as-constructed location may differ from their design location. Retaining wall heights have been supplied by Covey Associates Pty Ltd.

Compaction of any fill material placed on this site shall be completed to level one inspection and testing services in accordance with AS3798-2007.

Depth of fill values are calculated to the lower of the pre-development surface and the ground surface from Survey.

Copyright © Veris Australia Pty Ltd 03/12/2021.

**PAULS ROAD**





**RIVERPARKS  
STAGE 26**  
For  
**NORTHERLY PROJECTS  
PTY LTD**

**IMPORTANT NOTES:**  
(These notes are an integral part of this plan)  
This plan has been prepared for **NORTHERLY PROJECTS PTY LTD** for the purposes of **A Disclosure Plan Under the Land Sales Act 1984 (as amended)**.  
It is not to be used by any other person or corporation or for any other purposes and is subject to the following limitations:

Please refer to the approved Development Application for conditions relating to the LOT and to approved Operational Works drawings for services location and possible easements.

**THESE DESIGNS AND DRAWINGS ARE COPYRIGHT AND ARE NOT TO BE USED OR REPRODUCED WITHOUT THE WRITTEN PERMISSION OF VERIS**

**Data Sources**  
Cadastral Boundaries: 431132-LCM01 (E).dwg  
Engineering Design: 202664 Sig 26 Design.dwg  
Final Surface Contours: 202664 Sig 26 Design.dwg  
Pre-development Surface: 431132 DS02(d).dwg

Issue	Revisions	Date	Drawn	BK
A	Original	03/12/2021		

Locality: Upper Caboolture  
Local Authority: Moreton Bay R.C.  
Horizontal Meridian: MGA Zone 56  
Vertical Level Datum: AHD D  
Scale: 1:250 @ A4  
Designed: Veris  
Drawn: BK 02/12/2021  
Checked: KJJ 16/12/2021  
Plot Date: 16 Dec, 2021  
Comp File Ref: 431132-SI26-DP(A).dwg

**DISCLOSURE PLAN**  
of Proposed LOT 2609  
being part of  
Lot 1 on RP166898

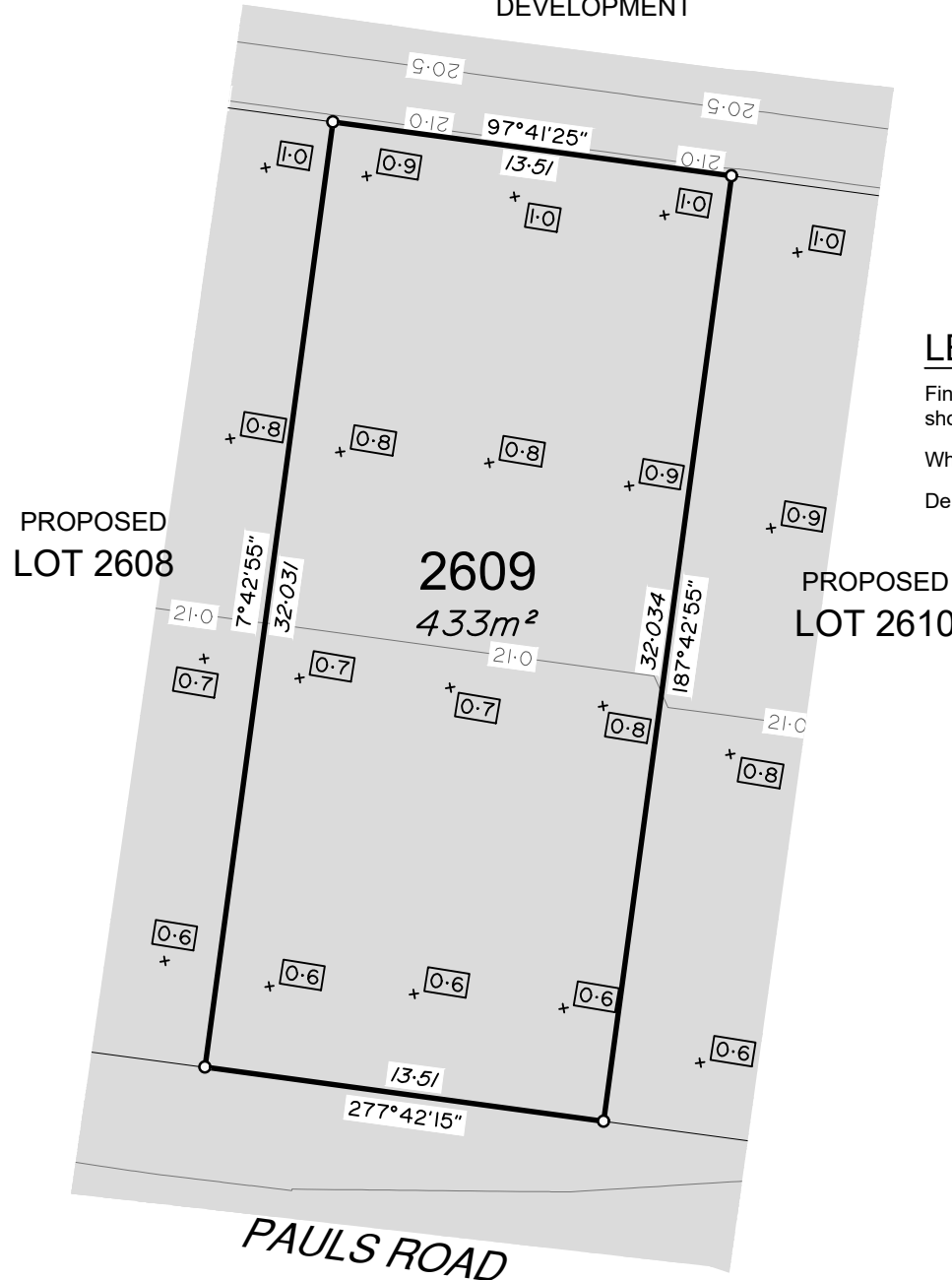


**BRISBANE** (07) 3666 4700  
**WHITSUNDAYS** (07) 4945 6800  
**MACCKAY** (07) 4957 9700  
**CAIRNS** (07) 4252 9400

veris.com.au  
ACN 615 735 727  
Veris Australia Pty Ltd

Drawing No **431132-26-DP 2609** Issue **A**

**FUTURE PROPOSED  
DEVELOPMENT**



**LEGEND**

Final surface contours based on A.H.D. datum at an interval of 0.5m, shown as: — 9.5 —

Where applicable, areas to be filled are shown as:

Depth of fill, in metres, shown as: - + [1.1]

**ADDITIONAL NOTES:**

The LOT dimensions and area shown hereon are subject to final field survey and also to the requirements of Council and any other authority which may have requirements under any relevant legislation

Final surface contours shown hereon have been supplied by Covey Associates Pty Ltd.

Location of retaining walls are as shown on Engineering design drawings. Their as-constructed location may differ from their design location. Retaining wall heights have been supplied by Covey Associates Pty Ltd.

Compaction of any fill material placed on this site shall be completed to level one inspection and testing services in accordance with AS3798-2007.

Depth of fill values are calculated to the lower of the pre-development surface and the ground surface from Survey.

Copyright © Veris Australia Pty Ltd 03/12/2021.

0 12.5m 25m 37.5m  
50 mm 100 mm 150 mm SCALE BAR



**RIVERPARKS  
STAGE 26**  
For  
**NORTHERLY PROJECTS  
PTY LTD**

**IMPORTANT NOTES:**  
(These notes are an integral part of this plan)  
This plan has been prepared for **NORTHERLY PROJECTS PTY LTD** for the purposes of **A Disclosure Plan Under the Land Sales Act 1984 (as amended)**. It is not to be used by any other person or corporation or for any other purposes and is subject to the following limitations:

Please refer to the approved Development Application for conditions relating to the LOT and to approved Operational Works drawings for services location and possible easements.

THESE DESIGNS AND DRAWINGS ARE COPYRIGHT AND ARE NOT TO BE USED OR REPRODUCED WITHOUT THE WRITTEN PERMISSION OF VERIS

**Data Sources**  
Cadastral Boundaries: 431132-LCM01 (E).dwg  
Engineering Design: 202664 Sig 26 Design.dwg  
Final Surface Contours: 202664 Sig 26 Design.dwg  
Pre-development Surface: 431132 DS02(d).dwg

Issue	Revisions	Date	Drawn	BK
A	Original	03/12/2021		BK

Locality: Upper Caboolture  
Local Authority: Moreton Bay R.C.  
Horizontal Meridian: MGA Zone 56  
Vertical Level Datum: AHD D  
Scale: 1:250 @ A4  
Designed: Veris  
Drawn: BK 02/12/2021  
Checked: KJJ 16/12/2021  
Plot Date: 16 Dec, 2021  
Comp File Ref: 431132-SI26-DP(A).dwg

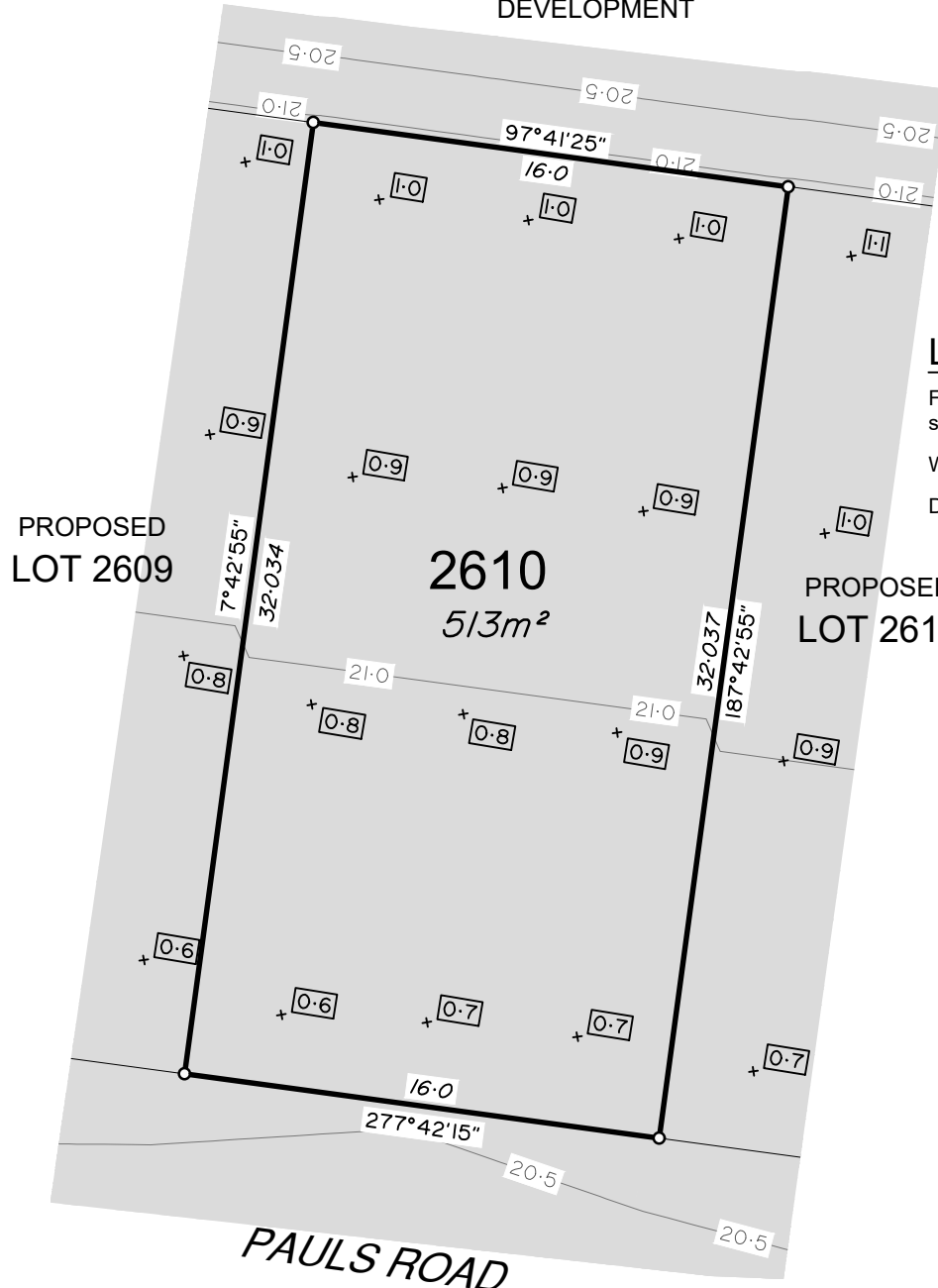
**DISCLOSURE PLAN  
of Proposed LOT 2610  
being part of  
Lot 1 on RP166898**



**BRISBANE** (07) 3666 4700  
**WHITSUNDAYS** (07) 4945 6800  
**MACKAY** (07) 4957 9700  
**CAIRNS** (07) 4252 9400  
veris.com.au  
ACN 615 735 727  
Veris Australia Pty Ltd

Drawing No **431132-26-DP 2610** Issue **A**

**FUTURE PROPOSED  
DEVELOPMENT**



**LEGEND**

Final surface contours based on A.H.D. datum at an interval of 0.5m, shown as: 9.5

Where applicable, areas to be filled are shown as:

Depth of fill, in metres, shown as:-

**ADDITIONAL NOTES:**

The LOT dimensions and area shown hereon are subject to final field survey and also to the requirements of Council and any other authority which may have requirements under any relevant legislation

Final surface contours shown hereon have been supplied by Covey Associates Pty Ltd.

Location of retaining walls are as shown on Engineering design drawings. Their as-constructed location may differ from their design location. Retaining wall heights have been supplied by Covey Associates Pty Ltd.

Compaction of any fill material placed on this site shall be completed to level one inspection and testing services in accordance with AS3798-2007.

Depth of fill values are calculated to the lower of the pre-development surface and the ground surface from Survey.

Copyright © Veris Australia Pty Ltd 03/12/2021.



**RIVERPARKS  
STAGE 26**  
For  
**NORTHERLY PROJECTS  
PTY LTD**

**IMPORTANT NOTES:**  
(These notes are an integral part of this plan)  
This plan has been prepared for **NORTHERLY PROJECTS PTY LTD** for the purposes of **A Disclosure Plan Under the Land Sales Act 1984 (as amended)**.  
It is not to be used by any other person or corporation or for any other purposes and is subject to the following limitations:

Please refer to the approved Development Application for conditions relating to the LOT and to approved Operational Works drawings for services location and possible easements.

THESE DESIGNS AND DRAWINGS ARE COPYRIGHT AND ARE NOT TO BE USED OR REPRODUCED WITHOUT THE WRITTEN PERMISSION OF VERIS

**Data Sources**  
Cadastral Boundaries: 431132-LCM01 (E).dwg  
Engineering Design: 202664 Sig 26 Design.dwg  
Final Surface Contours: 202664 Sig 26 Design.dwg  
Pre-development Surface: 431132 DS02(d).dwg

Issue	Revisions	Date	Drawn	BK
A	Original	03/12/2021		BK

Locality: Upper Caboolture  
Local Authority: Moreton Bay R.C.  
Horizontal Meridian: MGA Zone 56  
Vertical Level Datum: AHD D  
Scale: 1:250 @ A4  
Designed: Veris  
Drawn: BK 02/12/2021  
Checked: KJJ 16/12/2021  
Plot Date: 16 Dec, 2021  
Comp File Ref: 431132-SI26-DP(A).dwg

**DISCLOSURE PLAN  
of Proposed LOT 2611  
being part of  
Lot 1 on RP166898**



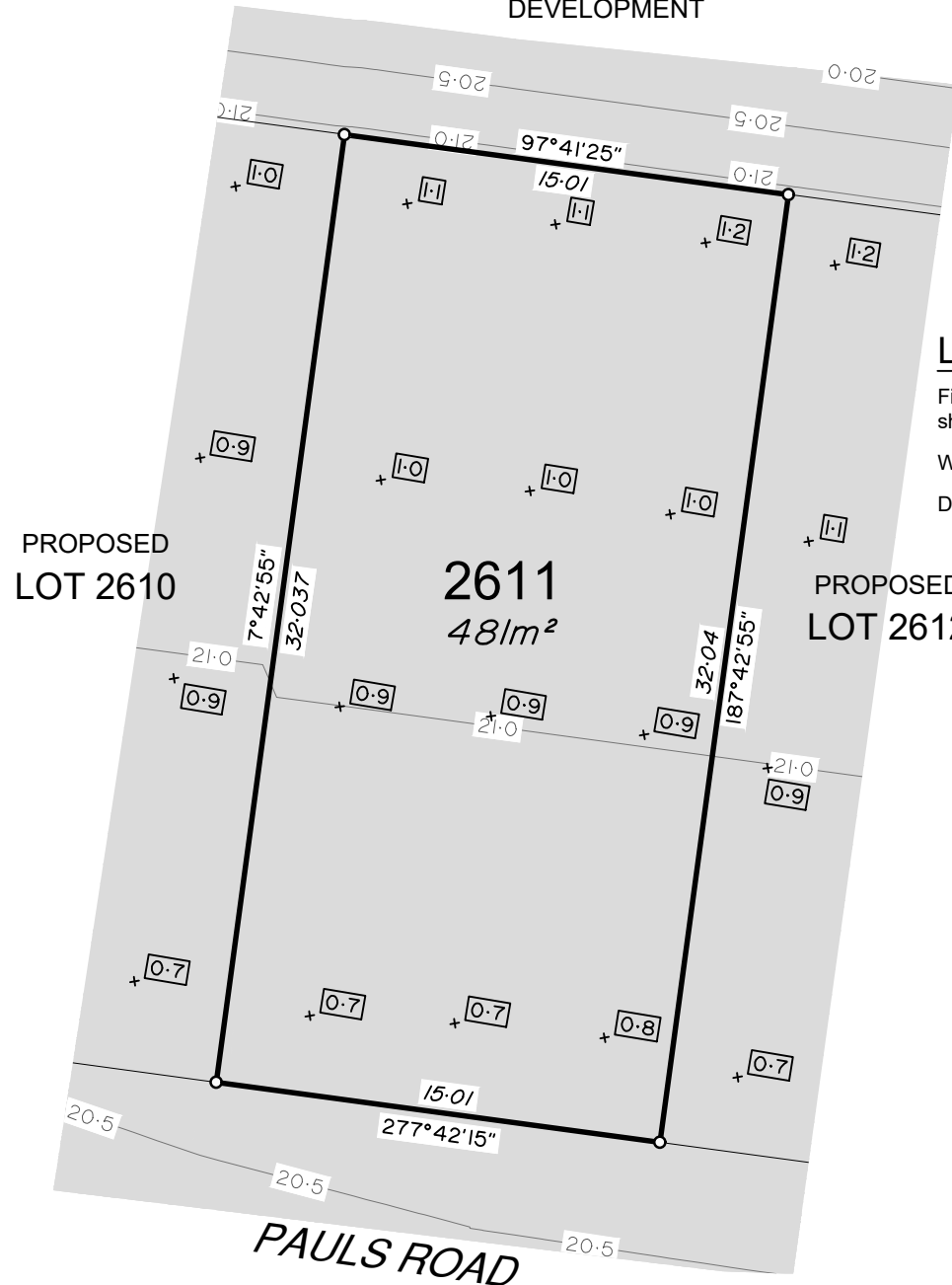
**veris**

BRISBANE (07) 3666 4700 WHITSUNDAYS (07) 4945 6800  
MACCKAY (07) 4957 9700 CAIRNS (07) 4252 9400

veris.com.au  
ACN 615 735 727  
Veris Australia Pty Ltd

Drawing No 431132-26-DP 2611 Issue A

**FUTURE PROPOSED  
DEVELOPMENT**



**LEGEND**

Final surface contours based on A.H.D. datum at an interval of 0.5m, shown as: — 9.5 —

Where applicable, areas to be filled are shown as: [Grey Box]

Depth of fill, in metres, shown as: + [1.1]

**ADDITIONAL NOTES:**

The LOT dimensions and area shown hereon are subject to final field survey and also to the requirements of Council and any other authority which may have requirements under any relevant legislation

Final surface contours shown hereon have been supplied by Covey Associates Pty Ltd.

Location of retaining walls are as shown on Engineering design drawings. Their as-constructed location may differ from their design location. Retaining wall heights have been supplied by Covey Associates Pty Ltd.

Compaction of any fill material placed on this site shall be completed to level one inspection and testing services in accordance with AS3798-2007.

Depth of fill values are calculated to the lower of the pre-development surface and the ground surface from Survey.

Copyright © Veris Australia Pty Ltd 03/12/2021.



**RIVERPARKS  
STAGE 26**  
For  
**NORTHERLY PROJECTS  
PTY LTD**

**IMPORTANT NOTES:**  
(These notes are an integral part of this plan)  
This plan has been prepared for **NORTHERLY PROJECTS PTY LTD** for the purposes of **A Disclosure Plan Under the Land Sales Act 1984 (as amended)**. It is not to be used by any other person or corporation or for any other purposes and is subject to the following limitations:

Please refer to the approved Development Application for conditions relating to the LOT and to approved Operational Works drawings for services location and possible easements.

**THESE DESIGNS AND DRAWINGS ARE COPYRIGHT AND ARE NOT TO BE USED OR REPRODUCED WITHOUT THE WRITTEN PERMISSION OF VERIS**

**Data Sources**  
Cadastral Boundaries: 431132-LCM01 (E).dwg  
Engineering Design: 202664 Sig 26 Design.dwg  
Final Surface Contours: 202664 Sig 26 Design.dwg  
Pre-development Surface: 431132 DS02(d).dwg

Issue	Revisions	Date	Drawn
A	Original	03/12/2021	BK

Locality: Upper Caboolture  
Local Authority: Moreton Bay R.C.  
Horizontal Meridian: MGA Zone 56  
Vertical Level Datum: AHD D  
Scale: 1:250 @ A4  
Designed: Veris  
Drawn: BK 02/12/2021  
Checked: KJJ 16/12/2021  
Plot Date: 16 Dec, 2021  
Comp File Ref: 431132-SI26-DP(A).dwg

**DISCLOSURE PLAN  
of Proposed LOT 2612  
being part of  
Lot 1 on RP166898**



**BRISBANE** (07) 3666 4700  
**WHITSUNDAYS** (07) 4945 6800  
**MACKAY** (07) 4957 9700  
**CAIRNS** (07) 4252 9400  
veris.com.au  
ACN 615 735 727  
Veris Australia Pty Ltd

Drawing No: 431132-26-DP 2612  
Issue: A



**LEGEND**

Final surface contours based on A.H.D. datum at an interval of 0.5m, shown as: 9.5

Where applicable, areas to be filled are shown as:

Depth of fill, in metres, shown as: 1.1

**ADDITIONAL NOTES:**

The LOT dimensions and area shown hereon are subject to final field survey and also to the requirements of Council and any other authority which may have requirements under any relevant legislation

Final surface contours shown hereon have been supplied by Covey Associates Pty Ltd.

Location of retaining walls are as shown on Engineering design drawings. Their as-constructed location may differ from their design location. Retaining wall heights have been supplied by Covey Associates Pty Ltd.

Compaction of any fill material placed on this site shall be completed to level one inspection and testing services in accordance with AS3798-2007.

Depth of fill values are calculated to the lower of the pre-development surface and the ground surface from Survey.

Copyright © Veris Australia Pty Ltd 03/12/2021.





**RIVERPARKS  
STAGE 26**  
For  
**NORTHERLY PROJECTS  
PTY LTD**

**IMPORTANT NOTES:**  
(These notes are an integral part of this plan)  
This plan has been prepared for **NORTHERLY PROJECTS PTY LTD** for the purposes of **A Disclosure Plan Under the Land Sales Act 1984 (as amended)**.  
It is not to be used by any other person or corporation or for any other purposes and is subject to the following limitations:

Please refer to the approved Development Application for conditions relating to the LOT and to approved Operational Works drawings for services location and possible easements.

THESE DESIGNS AND DRAWINGS ARE COPYRIGHT AND ARE NOT TO BE USED OR REPRODUCED WITHOUT THE WRITTEN PERMISSION OF VERIS

**Data Sources**  
Cadastral Boundaries: 431132-LCM01 (E).dwg  
Engineering Design: 202664 Sig 26 Design.dwg  
Final Surface Contours: 202664 Sig 26 Design.dwg  
Pre-development Surface: 431132 DS02(d).dwg

Issue	Revisions	Date	Drawn
A	Original	03/12/2021	BK

Locality: Upper Caboolture  
Local Authority: Moreton Bay R.C.  
Horizontal Meridian: MGA Zone 56  
Vertical Level Datum: AHD D  
Scale: 1:250 @ A4  
Designed: Veris  
Drawn: BK 02/12/2021  
Checked: KJJ 16/12/2021  
Plot Date: 16 Dec, 2021  
Comp File Ref: 431132-SI26-DP(A).dwg

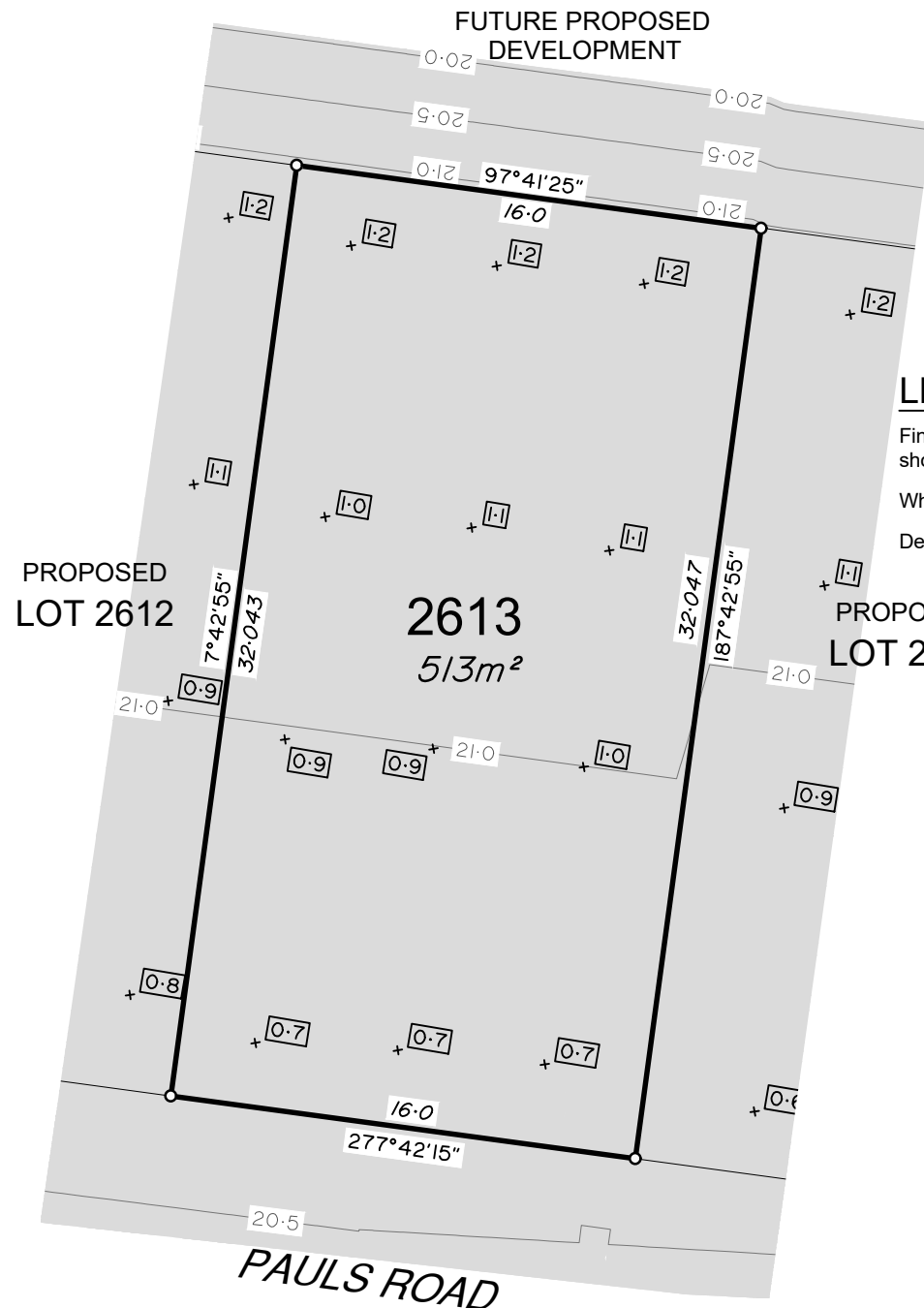
**DISCLOSURE PLAN**  
of Proposed LOT 2613  
being part of  
Lot 1 on RP166898



BRISBANE (07) 3666 4700 WHITSUNDAYS (07) 4945 6800  
MACKAY (07) 4957 9700 CAIRNS (07) 4252 9400

veris.com.au  
ACN 615 735 727  
Veris Australia Pty Ltd

Drawing No 431132-26-DP 2613 Issue A



**LEGEND**

Final surface contours based on A.H.D. datum at an interval of 0.5m, shown as: — 9.5 —

Where applicable, areas to be filled are shown as: [Grey Box]

Depth of fill, in metres, shown as: + [Box]

**ADDITIONAL NOTES:**

The LOT dimensions and area shown hereon are subject to final field survey and also to the requirements of Council and any other authority which may have requirements under any relevant legislation

Final surface contours shown hereon have been supplied by Covey Associates Pty Ltd.

Location of retaining walls are as shown on Engineering design drawings. Their as-constructed location may differ from their design location. Retaining wall heights have been supplied by Covey Associates Pty Ltd.

Compaction of any fill material placed on this site shall be completed to level one inspection and testing services in accordance with AS3798-2007.

Depth of fill values are calculated to the lower of the pre-development surface and the ground surface from Survey.

Copyright © Veris Australia Pty Ltd 03/12/2021.





RIVERPARKS  
STAGE 26  
For  
NORTHERLY PROJECTS  
PTY LTD

IMPORTANT NOTES:  
(These notes are an integral part of this plan)  
This plan has been prepared for NORTHERLY PROJECTS PTY LTD for the purposes of A Disclosure Plan Under the Land Sales Act 1984 (as amended). It is not to be used by any other person or corporation or for any other purposes and is subject to the following limitations:

Please refer to the approved Development Application for conditions relating to the LOT and to approved Operational Works drawings for services location and possible easements.

THESE DESIGNS AND DRAWINGS ARE COPYRIGHT AND ARE NOT TO BE USED OR REPRODUCED WITHOUT THE WRITTEN PERMISSION OF VERIS

**Data Sources**  
Cadastral Boundaries: 431132-LCM01 (E).dwg  
Engineering Design: 202664 Sig 26 Design.dwg  
Final Surface Contours: 202664 Sig 26 Design.dwg  
Pre-development Surface: 431132 DS02(d).dwg

Issue	Revisions	Date	Drawn
A	Original	03/12/2021	BK

Locality: Upper Caboolture  
Local Authority: Moreton Bay R.C.  
Horizontal Meridian: MGA Zone 56  
Vertical Level Datum: AHD D  
Scale: 1:250 @ A4  
Designed: Veris  
Drawn: BK 02/12/2021  
Checked: KJJ 16/12/2021  
Plot Date: 16 Dec, 2021  
Comp File Ref: 431132-SI26-DP(A).dwg

DISCLOSURE PLAN  
of Proposed LOT 2614  
being part of  
Lot 1 on RP166898

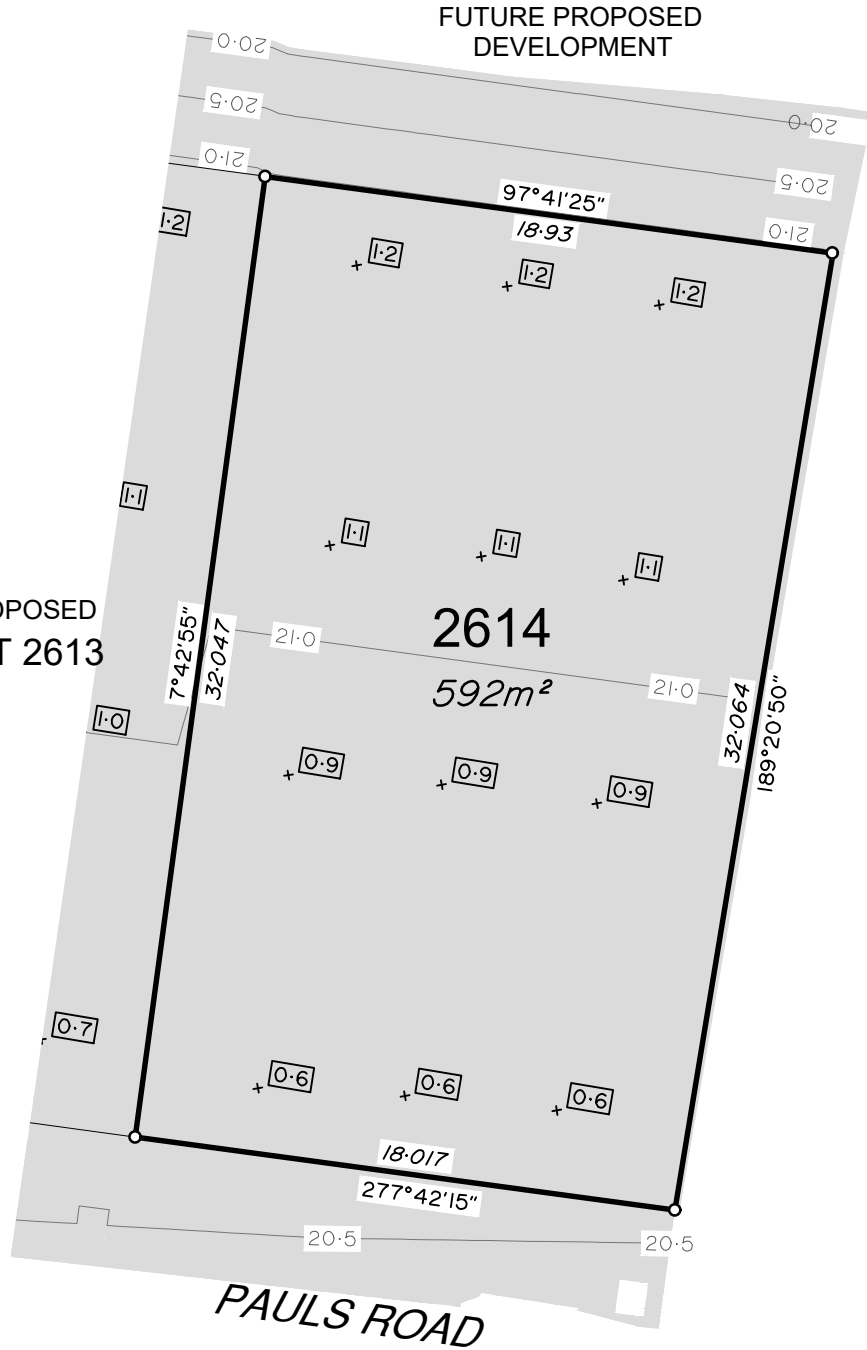


**veris**

BRISBANE (07) 3666 4700 WHITSUNDAYS (07) 4945 6800  
MACKEY (07) 4957 9700 CAIRNS (07) 4252 9400

veris.com.au  
ACN 615 735 727  
Veris Australia Pty Ltd

Drawing No 431132-26-DP 2614 Issue A



PROPOSED  
LOT 2613

FUTURE PROPOSED  
DEVELOPMENT

PAULS ROAD

**LEGEND**

Final surface contours based on A.H.D. datum at an interval of 0.5m, shown as: — 9.5 —

Where applicable, areas to be filled are shown as: [Shaded Box]

Depth of fill, in metres, shown as:- + [1.1]

7  
RPI57951

**ADDITIONAL NOTES:**  
The LOT dimensions and area shown hereon are subject to final field survey and also to the requirements of Council and any other authority which may have requirements under any relevant legislation

Final surface contours shown hereon have been supplied by Covey Associates Pty Ltd.

Location of retaining walls are as shown on Engineering design drawings. Their as-constructed location may differ from their design location. Retaining wall heights have been supplied by Covey Associates Pty Ltd.

Compaction of any fill material placed on this site shall be completed to level one inspection and testing services in accordance with AS3798-2007.

Depth of fill values are calculated to the lower of the pre-development surface and the ground surface from Survey.

Copyright © Veris Australia Pty Ltd 03/12/2021.

