



LEGEND	
	HYDRANT
	STOP VALVE
	JUNCTION
	END CAP

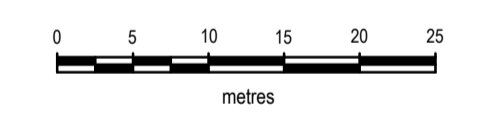
PRELIMINARY ONLY

CERTIFICATION
 RPS Australia East Pty Ltd (ACN 140 292 762), certifies that the locations of the water infrastructure on this plan have been surveyed in accordance with the requirements of the FNGROC Development Manual and, to the best of our knowledge and subject to the Important Note below, are accurate.

..... Authorised Delegate
 Date

- IMPORTANT NOTE**
- This plan was prepared for the sole purposes of the client for the specific purpose of recording the infrastructure for the Cairns Regional Council. This plan is strictly limited to the Purpose and does not apply directly or indirectly and will not be used for any other application, purpose, use or matter. The plan is presented without the assumption of a duty of care to any other person (other than the Client) ("Third Party") and may not be relied on by Third Party.
 - RPS Australia East Pty Ltd will not be liable (in negligence or otherwise) for any direct or indirect loss, damage, liability or claim arising out of or incidental to:
 - Third Party publishing, using or relying on the plan;
 - RPS Australia East Pty Ltd relying on information provided to it by the Client or a Third Party where the information is incorrect, incomplete, inaccurate, out-of-date or unreasonable;
 - any inaccuracies or other faults with information or data sourced from a Third Party;
 - RPS Australia East Pty Ltd relying on surface indicators that are incorrect or inaccurate;
 - the Client or any Third Party not verifying information in this plan where recommended by RPS Australia East Pty Ltd;
 - lodgement of this plan with any local authority against the recommendation of RPS Australia East Pty Ltd;
 - the accuracy, reliability, suitability or completeness of any approximations or estimates made or referred to by RPS Australia East Pty Ltd in this plan.
 - Without limiting paragraph 1 or 2 above, this plan may not be copied, distributed, or reproduced by any process unless this note is clearly displayed on the plan.
 - Scale shown is correct for the original plan and any copies of this plan should be verified by checking against the bar scale.
 - Stop valves, hydrants and other visible surface indicators have been located by survey. Other information has been obtained from design and construction information [provided by Third Parties] and should be checked before use.
 - The positions of some services shown on this plan have been exaggerated for drawing clarity purposes. Dimensions shown take precedence over scaled position.

NOTES
 Level Datum: AHD
 Origin of Levels: PSM 101497
 RL 42.639
 Meridian: GDA94 MGA Zone 55 (Plane)
 Vide GNSS
 Origin of Coordinates: PSM 101497
 E 363,782.962
 N 8,118,514.519



SCALE 1:500 IS APPLICABLE ONLY TO THE ORIGINAL SHEET SIZE. (A1)
 (1:1000 @ A3)

PROJECT MANAGER A KERLIN	SURVEYED VS 30/9 - RR 20/11/2020
COMPILED AMK	CAD REF PR135576-28.DWG
SHEET SIZE A1	SHEET 1 OF SHEETS 1 PR135576_As Con_RR1127.dwg PR135576_Sewer_Ascon_VS.mjo XR PR135576-25.DWG

RPS Australia East Pty Ltd
 ACN 140 292 762
 135 Abbott St
 PO Box 1949
 CAIRNS QLD 4870
 T +61 7 4031 1336
 F +61 7 4031 2942
 W rpsgroup.com

© COPYRIGHT PROTECTS THIS PLAN
 Unauthorised reproduction or amendment not permitted. Please contact the author.

**FGF DEVELOPMENTS
 PTY LTD**

**CHERRYBROOK
 STAGES 5 & 6A
 AS-CONSTRUCTED
 WATER RETICULATION**

SCALE 1:500	DATE 25/11/2020	DRAWING NO. PR135576-28	ISSUE
-----------------------	--------------------	-----------------------------------	-------