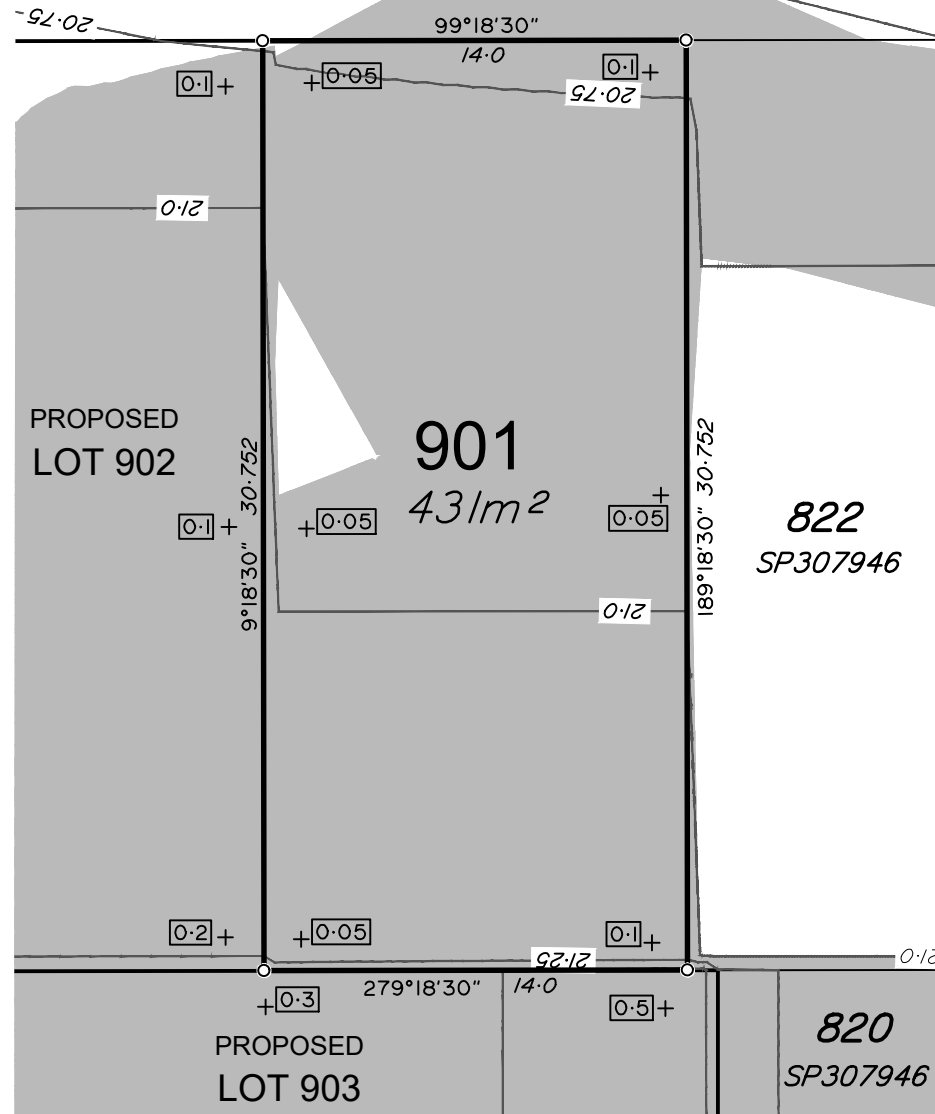




# RIVERPARKS WAY



## ADDITIONAL NOTES:

The LOT dimensions and area shown hereon are subject to final field survey and also to the requirements of Council and any other authority which may have requirements under any relevant legislation

Final surface contours shown hereon have been drawn from data supplied by Covey Associates Pty Ltd.

Depth of fill values shown are calculated from the lower of the pre-development surface or the temporary basin surface.

Compaction of any fill material placed on this site shall be completed to level one inspection and testing services in accordance with AS3798-2007.

Copyright © Veris Australia Pty Ltd 1/07/2020.

## LEGEND

Final surface contours based on A.H.D. datum at an interval of 0.25m, shown as: — 21.75 —

Where applicable, areas to be filled from the pre-development surface shown as:-



Depth of fill, in metres, shown as:- +1.9

## RIVERPARKS STAGE 9A

For

NORTHERLY PROJECTS PTY LTD

### IMPORTANT NOTES:

(These notes are an integral part of this plan)

This plan has been prepared for NORTHERLY PROJECTS PTY LTD for the purposes of **A Disclosure Plan Under the Land Sales Act 1984 (as amended)**.

It is not to be used by any other person or corporation or for any other purposes and is subject to the following limitations:

Please refer to the approved Development Application for conditions relating to the LOT and to approved Operational Works drawings for services location and possible easements.

THESE DESIGNS AND DRAWINGS ARE COPYRIGHT AND ARE NOT TO BE USED OR REPRODUCED WITHOUT THE WRITTEN PERMISSION OF VERIS

### Data Sources

Cadastral Boundaries SP232387

Final Surface Contours

Riverparks 9A output:12daz

Engineering Design

Riverparks 9A output:12daz

Pre-development Surface

Riverparks 9A output:12daz

A	Original	01/07/2020	G.J.F.
Issue	Revisions	Date	Drawn
Locality:	UPPER CABOOLTURE		
Local Authority:	MBRC		
Horizontal Meridian:	MGA Vide GNSS		
Vertical Level Datum:	AHD D		
Scale:	1:250 @ A4		
Designed:	Covey Associates		
Drawn:	G.J.F 01/07/2020		
Checked:	K.J.J 02/07/2020		
Plot Date:	03 Jul, 2020		
Computer File Ref:	31132 St9A DPs(A).DWG		

## DISCLOSURE PLAN of Proposed LOT 901

being part of  
Lot 109 on SP307946



BRISBANE (07) 3666 4700 WHITSUNDAYS (07) 4945 1722  
MACKAY (07) 4951 2911 CAIRNS (07) 4051 6722

veris.com.au

ACN 615 735 727  
Veris Australia Pty Ltd

Drawing No 431132-9A-DP901 Issue A



# RIVERPARKS WAY

## SILVERASH STREET

### ADDITIONAL NOTES:

The LOT dimensions and area shown hereon are subject to final field survey and also to the requirements of Council and any other authority which may have requirements under any relevant legislation

Final surface contours shown hereon have been drawn from data supplied by Covey Associates Pty Ltd.

Depth of fill values shown are calculated from the lower of the pre-development surface or the temporary basin surface.

Compaction of any fill material placed on this site shall be completed to level one inspection and testing services in accordance with AS3798-2007.

Copyright © Veris Australia Pty Ltd 1/07/2020.

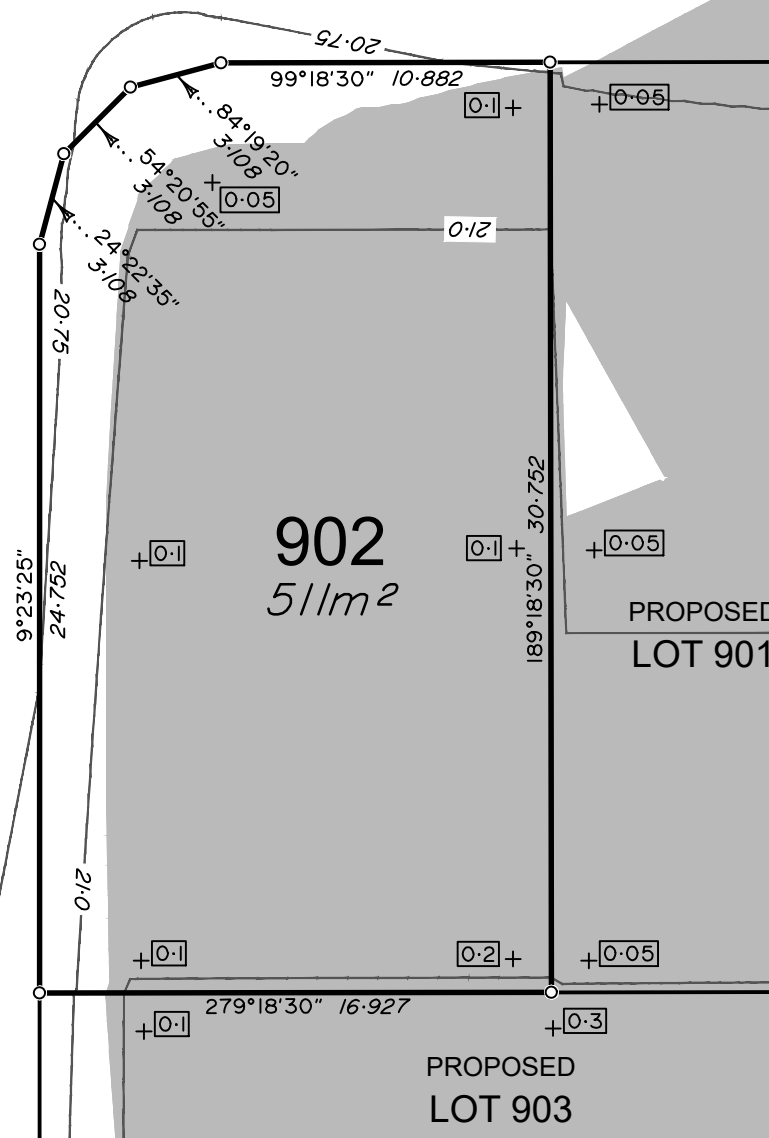
### LEGEND

Final surface contours based on A.H.D. datum at an interval of 0.25m, shown as: — 21.75 —

Where applicable, areas to be filled from the pre-development surface shown as:-



Depth of fill, in metres, shown as:- +1.9



### RIVERPARKS STAGE 9A

For  
NORTHERLY PROJECTS PTY LTD

#### IMPORTANT NOTES:

(These notes are an integral part of this plan)  
This plan has been prepared for NORTHERLY PROJECTS PTY LTD for the purposes of a **Disclosure Plan** Under the Land Sales Act 1984 (as amended).

It is not to be used by any other person or corporation or for any other purposes and is subject to the following limitations:

Please refer to the approved Development Application for conditions relating to the LOT and to approved Operational Works drawings for services location and possible easements.

THESE DESIGNS AND DRAWINGS ARE COPYRIGHT AND ARE NOT TO BE USED OR REPRODUCED WITHOUT THE WRITTEN PERMISSION OF VERIS

#### Data Sources

Cadastral Boundaries SP232387  
Final Surface Contours  
Riverparks 9A output.12daz  
Engineering Design  
Riverparks 9A output.12daz  
Pre-development Surface  
Riverparks 9A output.12daz

Issue	Revisions	Date	Drawn
A	Original	01/07/2020	G.J.F.

Locality: UPPER CABOOLTURE  
Local Authority: MBRC  
Horizontal Meridian: MGA Vide GNSS  
Vertical Level Datum: AHD D  
Scale: 1:250 @ A4  
Designed: Covey Associates  
Drawn: G.J.F 01/07/2020  
Checked: K.J.J 02/07/2020  
Plot Date: 03 Jul, 2020  
Computer File Ref: 31132 St9A DPs(A).DWG

**DISCLOSURE PLAN**  
of Proposed LOT 902  
being part of  
Lot 109 on SP307946



BRISBANE (07) 3666 4700 WHITSUNDAYS (07) 4945 1722  
MACKAY (07) 4951 2911 CAIRNS (07) 4051 6722

veris.com.au

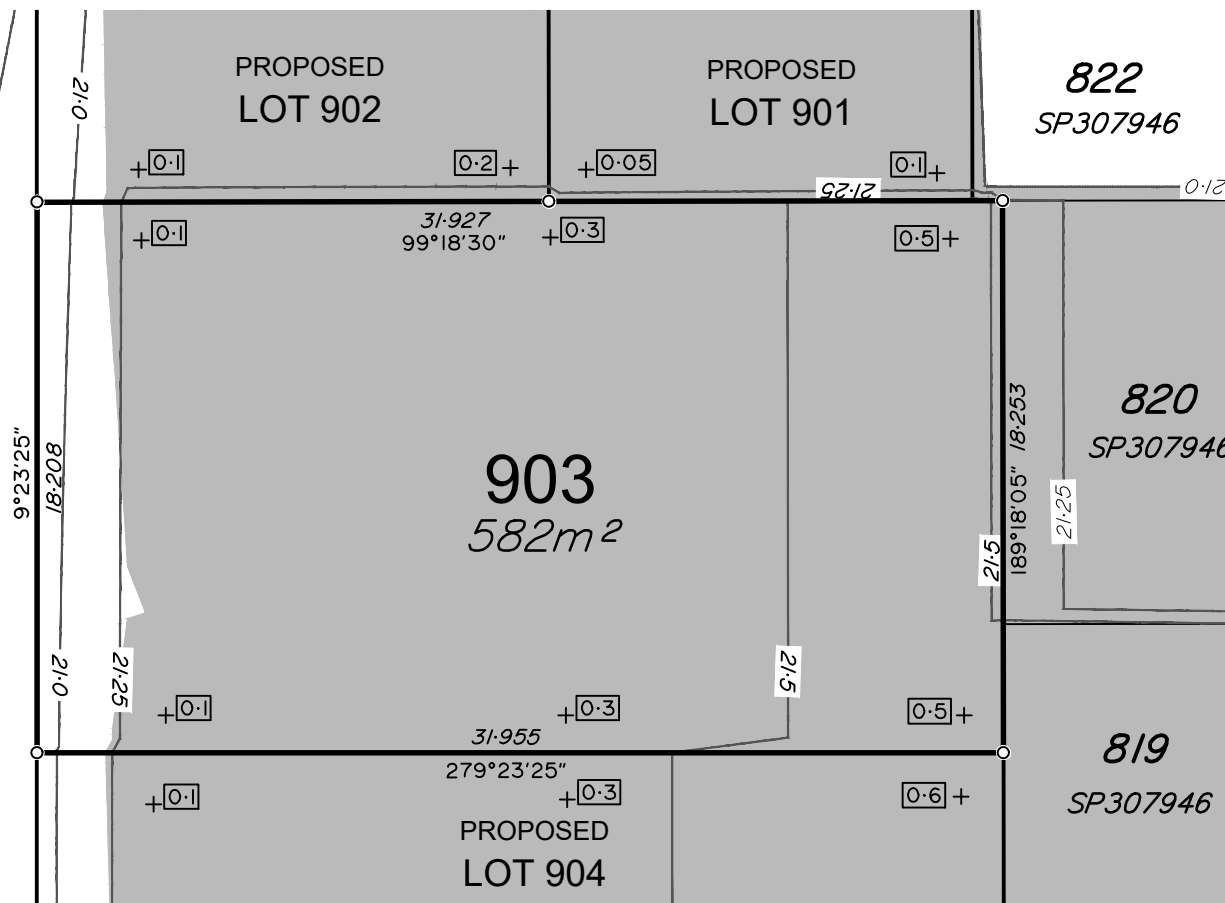
ACN 615 735 727  
Veris Australia Pty Ltd

Drawing No 431132-9A-DP902 Issue A





SILVERASH STREET



## LEGEND

Final surface contours based on A.H.D. datum at an interval of 0.25m, shown as: — 21.75 —

Where applicable, areas to be filled from the pre-development surface shown as:-



Depth of fill, in metres, shown as:- +1.9

## ADDITIONAL NOTES:

The LOT dimensions and area shown hereon are subject to final field survey and also to the requirements of Council and any other authority which may have requirements under any relevant legislation

Final surface contours shown hereon have been drawn from data supplied by Covey Associates Pty Ltd.

Depth of fill values shown are calculated from the lower of the pre-development surface or the temporary basin surface.

Compaction of any fill material placed on this site shall be completed to level one inspection and testing services in accordance with AS3798-2007.

Copyright © Veris Australia Pty Ltd 1/07/2020.

## RIVERPARKS STAGE 8A

For  
NORTHERLY PROJECTS PTY LTD

### IMPORTANT NOTES:

(These notes are an integral part of this plan)

This plan has been prepared for NORTHERLY PROJECTS PTY LTD for the purposes of **A Disclosure Plan Under the Land Sales Act 1984 (as amended)**.

It is not to be used by any other person or corporation or for any other purposes and is subject to the following limitations:

Please refer to the approved Development Application for conditions relating to the LOT and to approved Operational Works drawings for services location and possible easements.

THESE DESIGNS AND DRAWINGS ARE COPYRIGHT AND ARE NOT TO BE USED OR REPRODUCED WITHOUT THE WRITTEN PERMISSION OF VERIS

### Data Sources

Cadastral Boundaries SP232387  
Final Surface Contours  
Riverparks 8A output.12daz  
Engineering Design  
Riverparks 8A output.12daz  
Pre-development Surface  
Riverparks 8A output.12daz

Issue	Revisions	Date	Drawn
A	Original	01/07/2020	G.J.F.

Locality: UPPER CABOOLTURE  
Local Authority: MBRC  
Horizontal Meridian: MGA Vide GNSS  
Vertical Level Datum: AHD D  
Scale: 1:250 @ A4  
Designed: Covey Associates  
Drawn: G.J.F 01/07/2020  
Checked: K.J.J 02/07/2020  
Plot Date: 03 Jul, 2020  
Computer File Ref: 31132 St8A DPs(A).DWG

DISCLOSURE PLAN  
of Proposed LOT 903  
being part of  
Lot 109 on SP307946



BRISBANE (07) 3666 4700 WHITSUNDAYS (07) 4945 1722  
MACKAY (07) 4951 2911 CAIRNS (07) 4051 6722

veris.com.au  
ACN 615 735 727  
Veris Australia Pty Ltd

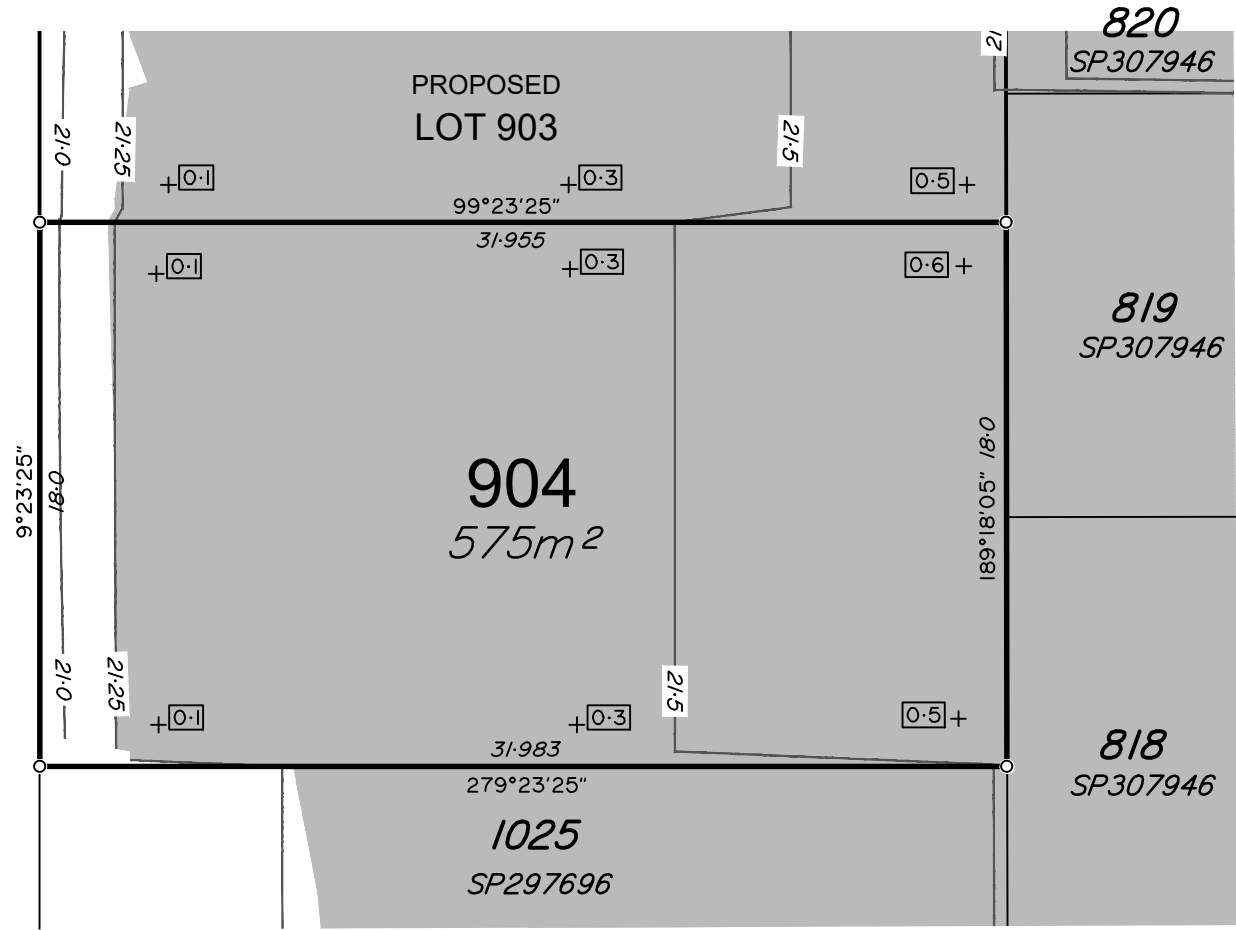
Drawing No 431132-9A-DP 903 Issue A





SILVERASH STREET

20.75  
20.75



## LEGEND

Final surface contours based on A.H.D. datum at an interval of 0.25m, shown as: — 21.75 —

Where applicable, areas to be filled from the pre-development surface shown as:-



Depth of fill, in metres, shown as:- +1.9

## ADDITIONAL NOTES:

The LOT dimensions and area shown hereon are subject to final field survey and also to the requirements of Council and any other authority which may have requirements under any relevant legislation

Final surface contours shown hereon have been drawn from data supplied by Covey Associates Pty Ltd.

Depth of fill values shown are calculated from the lower of the pre-development surface or the temporary basin surface.

Compaction of any fill material placed on this site shall be completed to level one inspection and testing services in accordance with AS3798-2007.

Copyright © Veris Australia Pty Ltd 1/07/2020.

## RIVERPARKS STAGE 8A

For  
NORTHERLY PROJECTS PTY LTD

### IMPORTANT NOTES:

(These notes are an integral part of this plan)  
This plan has been prepared for NORTHERLY PROJECTS PTY LTD for the purposes of **A Disclosure Plan Under the Land Sales Act 1984 (as amended)**.  
It is not to be used by any other person or corporation or for any other purposes and is subject to the following limitations:

Please refer to the approved Development Application for conditions relating to the LOT and to approved Operational Works drawings for services location and possible easements.

THESE DESIGNS AND DRAWINGS ARE COPYRIGHT AND ARE NOT TO BE USED OR REPRODUCED WITHOUT THE WRITTEN PERMISSION OF VERIS

### Data Sources

Cadastral Boundaries SP232387  
Final Surface Contours Riverparks 9A output.12daz  
Engineering Design Riverparks 9A output.12daz  
Pre-development Surface Riverparks 9A output.12daz

Issue	Revisions	Date	Drawn
A	Original	01/07/2020	GJF
Issue	Revisions	Date	Drawn
Locality:	UPPER CABOOLTURE		
Local Authority:	MBRC		
Horizontal Meridian:	MGA Vide GNSS		
Vertical Level Datum:	AHD D		
Scale:	1:250 @ A4		
Designed:	Covey Associates		
Drawn:	GJF 01/07/2020		
Checked:	KJJ 02/07/2020		
Plot Date:	03 Jul, 2020		
Computer File Ref:	31132 St9A DPs(A).DWG		

DISCLOSURE PLAN  
of Proposed LOT 904  
being part of  
Lot 109 on SP307946



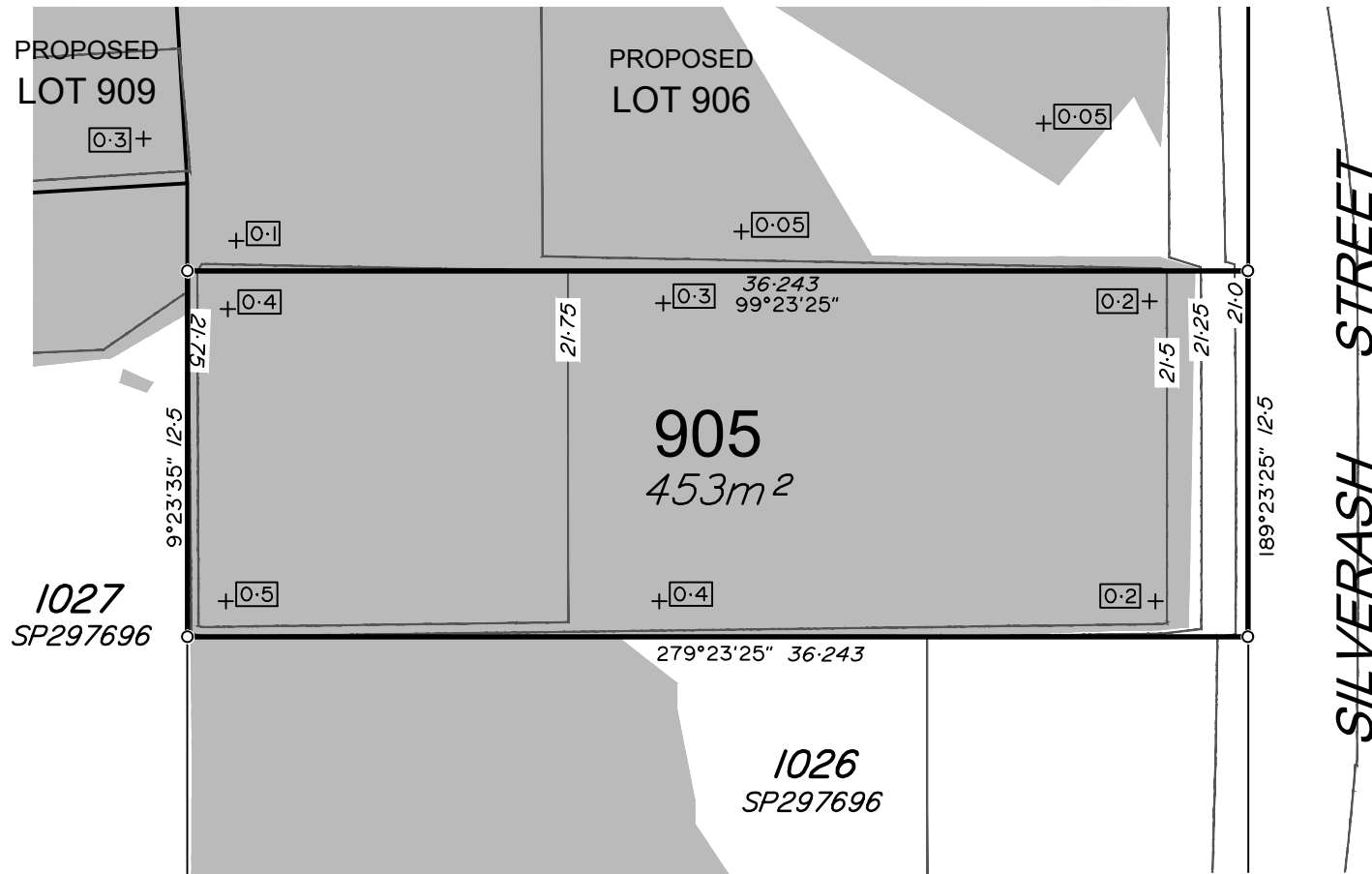
BRISBANE (07) 3666 4700 WHITSUNDAYS (07) 4945 1722  
MACKAY (07) 4951 2911 CAIRNS (07) 4051 6722

veris.com.au

ACN 615 735 727  
Veris Australia Pty Ltd

Drawing No 431132-9A-DP 904 Issue A





## LEGEND

Final surface contours based on A.H.D. datum at an interval of 0.25m, shown as: — 21.75 —

Where applicable, areas to be filled from the pre-development surface shown as:-



Depth of fill, in metres, shown as:- +1.9

## ADDITIONAL NOTES:

The LOT dimensions and area shown hereon are subject to final field survey and also to the requirements of Council and any other authority which may have requirements under any relevant legislation

Final surface contours shown hereon have been drawn from data supplied by Covey Associates Pty Ltd.

Depth of fill values shown are calculated from the lower of the pre-development surface or the temporary basin surface.

Compaction of any fill material placed on this site shall be completed to level one inspection and testing services in accordance with AS3798-2007.

Copyright © Veris Australia Pty Ltd 1/07/2020.

## RIVERPARKS STAGE 8A

For  
NORTHERLY PROJECTS PTY LTD

### IMPORTANT NOTES:

(These notes are an integral part of this plan)

This plan has been prepared for NORTHERLY PROJECTS PTY LTD for the purposes of a **Disclosure Plan** Under the Land Sales Act 1984 (as amended).

It is not to be used by any other person or corporation or for any other purposes and is subject to the following limitations:

Please refer to the approved Development Application for conditions relating to the LOT and to approved Operational Works drawings for services location and possible easements.

THESE DESIGNS AND DRAWINGS ARE COPYRIGHT AND ARE NOT TO BE USED OR REPRODUCED WITHOUT THE WRITTEN PERMISSION OF VERIS

### Data Sources

Cadastral Boundaries SP232387  
Final Surface Contours  
Riverparks 9A output.12daz  
Engineering Design  
Riverparks 9A output.12daz  
Pre-development Surface  
Riverparks 9A output.12daz

A	Original	01/07/2020	G.J.F.
Issue	Revisions	Date	Drawn

Locality: UPPER CABOOLTURE  
Local Authority: MBRC  
Horizontal Meridian: MGA Vide GNSS  
Vertical Level Datum: AHD D  
Scale: 1:250 @ A4  
Designed: Covey Associates  
Drawn: G.J.F 01/07/2020  
Checked: K.J.J 02/07/2020  
Plot Date: 03 Jul, 2020  
Computer File Ref: 31132 St9A DP9(A).DWG

## DISCLOSURE PLAN of Proposed LOT 905

being part of  
Lot 109 on SP307946

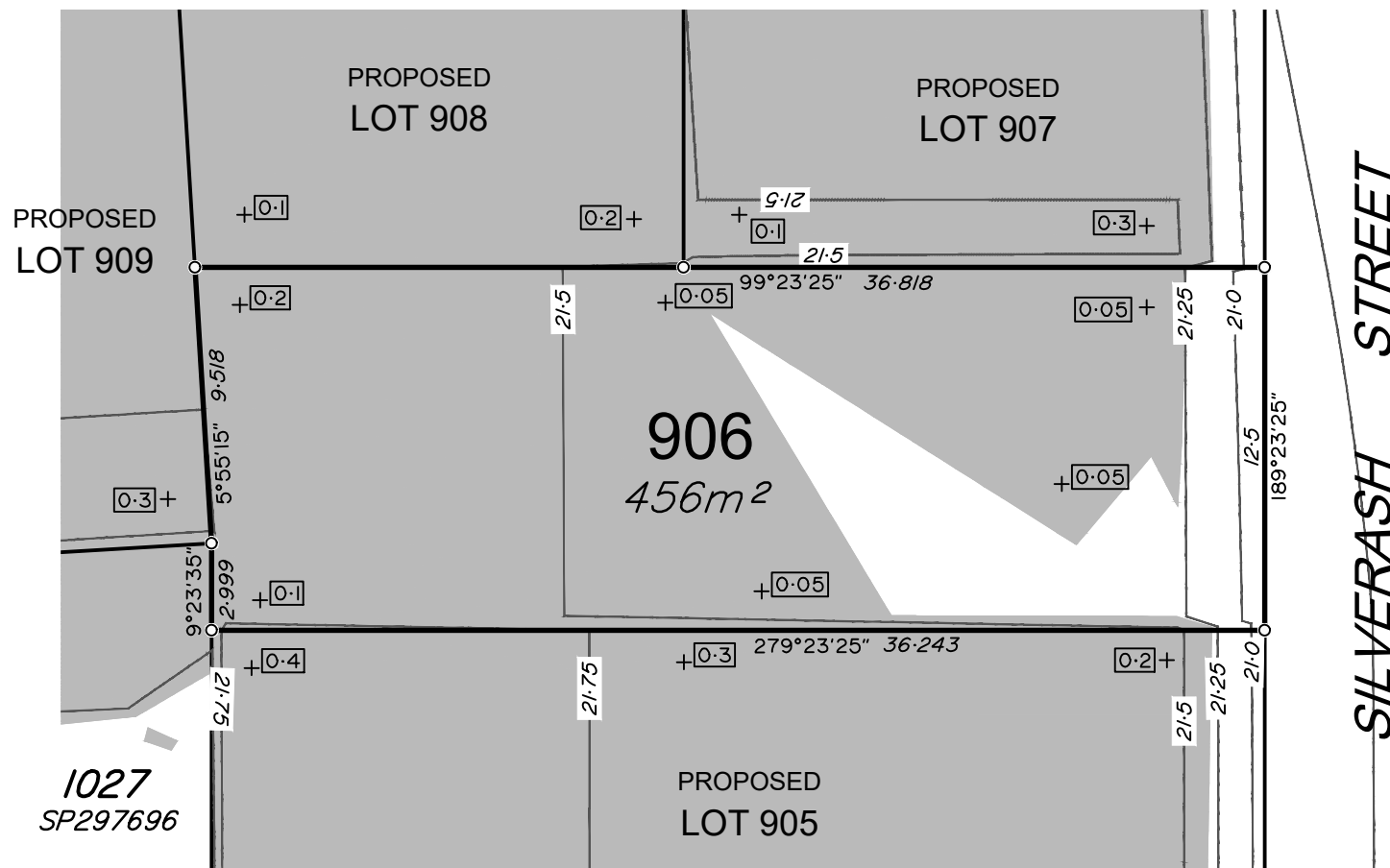


BRISBANE (07) 3666 4700 WHITSUNDAYS (07) 4945 1722  
MACKAY (07) 4951 2911 CAIRNS (07) 4051 6722

veris.com.au  
ACN 615 735 727  
Veris Australia Pty Ltd

Drawing No 431132-9A-DP 905 Issue A





## LEGEND

Final surface contours based on A.H.D. datum at an interval of 0.25m, shown as: — 21.75 —

Where applicable, areas to be filled from the pre-development surface shown as:-



Depth of fill, in metres, shown as:- +1.9

## ADDITIONAL NOTES:

The LOT dimensions and area shown hereon are subject to final field survey and also to the requirements of Council and any other authority which may have requirements under any relevant legislation

Final surface contours shown hereon have been drawn from data supplied by Covey Associates Pty Ltd.

Depth of fill values shown are calculated from the lower of the pre-development surface or the temporary basin surface.

Compaction of any fill material placed on this site shall be completed to level one inspection and testing services in accordance with AS3798-2007.

Copyright © Veris Australia Pty Ltd 1/07/2020.

## RIVERPARKS STAGE 8A

For  
NORTHERLY PROJECTS PTY LTD

### IMPORTANT NOTES:

(These notes are an integral part of this plan)

This plan has been prepared for NORTHERLY PROJECTS PTY LTD for the purposes of a **Disclosure Plan Under the Land Sales Act 1984 (as amended)**.

It is not to be used by any other person or corporation or for any other purposes and is subject to the following limitations:

Please refer to the approved Development Application for conditions relating to the LOT and to approved Operational Works drawings for services location and possible easements.

THESE DESIGNS AND DRAWINGS ARE COPYRIGHT AND ARE NOT TO BE USED OR REPRODUCED WITHOUT THE WRITTEN PERMISSION OF VERIS

### Data Sources

Cadastral Boundaries SP232387  
Final Surface Contours  
Riverparks 9A output:12daz  
Engineering Design  
Riverparks 9A output:12daz  
Pre-development Surface  
Riverparks 9A output:12daz

Issue	Revisions	Date	Drawn
A	Original	01/07/2020	G.J.F.

Locality: UPPER CABOOLTURE  
Local Authority: MBRC  
Horizontal Meridian: MGA Vide GNSS  
Vertical Level Datum: AHD D  
Scale: 1:250 @ A4  
Designed: Covey Associates  
Drawn: G.J.F 01/07/2020  
Checked: K.J.J 02/07/2020  
Plot Date: 03 Jul, 2020  
Computer File Ref: 31132 St9A DPs(A).DWG

**DISCLOSURE PLAN**  
of Proposed LOT 906  
being part of  
Lot 109 on SP307946



BRISBANE (07) 3666 4700 WHITSUNDAYS (07) 4945 1722  
MACKAY (07) 4951 2911 CAIRNS (07) 4051 6722

veris.com.au  
ACN 615 735 727  
Veris Australia Pty Ltd

Drawing No 431132-9A-DP 906 Issue A





#### ADDITIONAL NOTES:

The LOT dimensions and area shown hereon are subject to final field survey and also to the requirements of Council and any other authority which may have requirements under any relevant legislation

Final surface contours shown hereon have been drawn from data supplied by Covey Associates Pty Ltd.

Depth of fill values shown are calculated from the lower of the pre-development surface or the temporary basin surface.

Compaction of any fill material placed on this site shall be completed to level one inspection and testing services in accordance with AS3798-2007.

Copyright © Veris Australia Pty Ltd 1/07/2020.

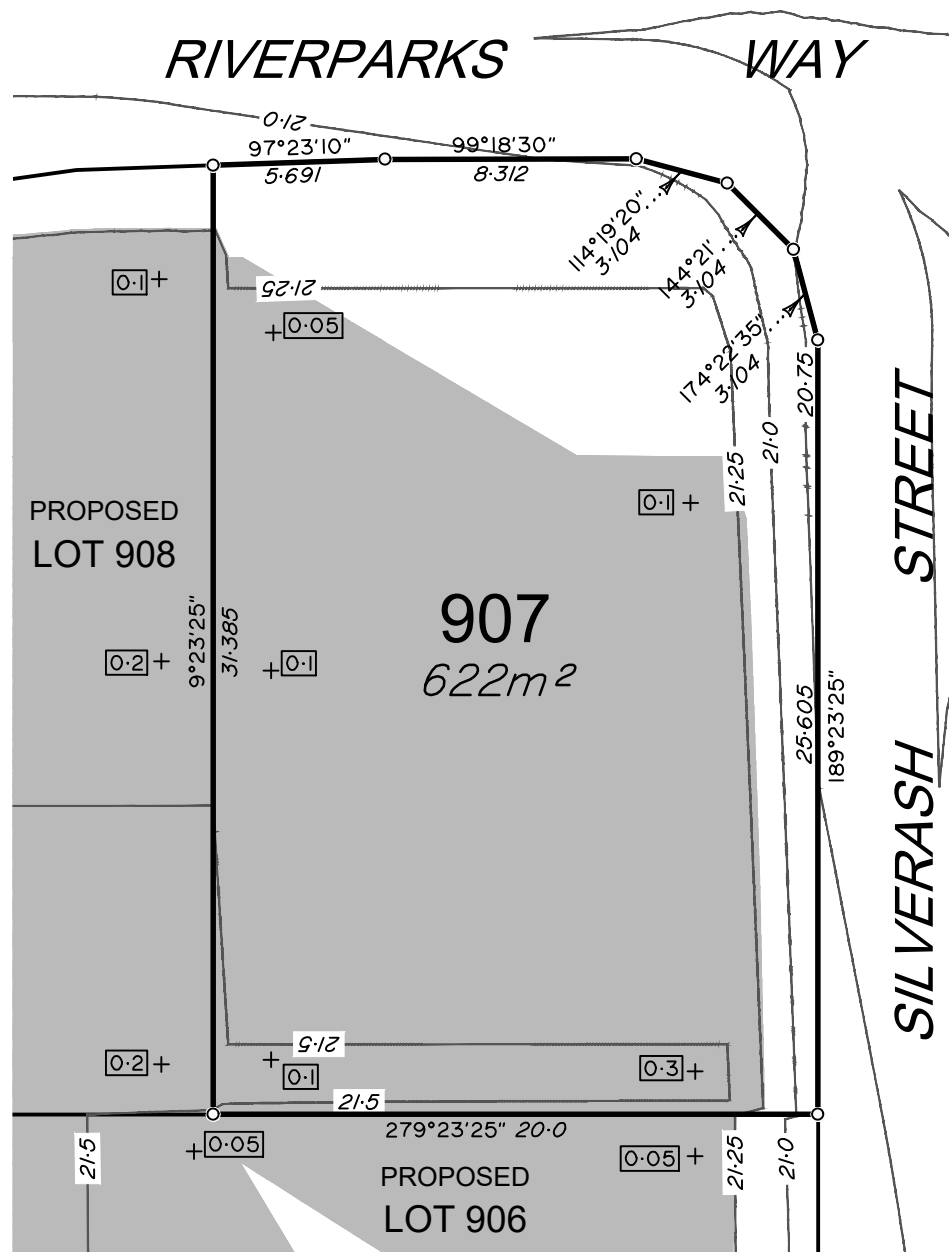
## LEGEND

Final surface contours based on A.H.D. datum at an interval of 0.25m, shown as: — 21.75 —

Where applicable, areas to be filled from the pre-development surface shown as:-



Depth of fill, in metres, shown as:- +1.9



## RIVERPARKS STAGE 9A

For  
NORTHERLY PROJECTS PTY LTD

#### IMPORTANT NOTES:

(These notes are an integral part of this plan)

This plan has been prepared for NORTHERLY PROJECTS PTY LTD for the purposes of **A Disclosure Plan Under the Land Sales Act 1984 (as amended)**.

It is not to be used by any other person or corporation or for any other purposes and is subject to the following limitations:

Please refer to the approved Development Application for conditions relating to the LOT and to approved Operational Works drawings for services location and possible easements.

THESE DESIGNS AND DRAWINGS ARE COPYRIGHT AND ARE NOT TO BE USED OR REPRODUCED WITHOUT THE WRITTEN PERMISSION OF VERIS

#### Data Sources

Cadastral Boundaries SP232387  
Final Surface Contours  
Riverparks 9A output.12daz  
Engineering Design  
Riverparks 9A output.12daz  
Pre-development Surface  
Riverparks 9A output.12daz

Issue	Revisions	Date	Drawn
A	Original	01/07/2020	G.J.F.

Locality: UPPER CABOOLTURE  
Local Authority: MBRC  
Horizontal Meridian: MGA Vide GNSS  
Vertical Level Datum: AHD D  
Scale: 1:250 @ A4  
Designed: Covey Associates  
Drawn: G.J.F 01/07/2020  
Checked: K.J.J 02/07/2020  
Plot Date: 03 Jul, 2020  
Computer File Ref: 31132 St9A DPs(A).DWG

**DISCLOSURE PLAN**  
of Proposed LOT 907  
being part of  
Lot 109 on SP307946



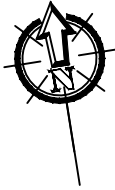
BRISBANE (07) 3666 4700 WHITSUNDAYS (07) 4945 1722  
MACKAY (07) 4951 2911 CAIRNS (07) 4051 6722

veris.com.au

ACN 615 735 727  
Veris Australia Pty Ltd

Drawing No 431132-9A-DP907 Issue A





#### ADDITIONAL NOTES:

The LOT dimensions and area shown hereon are subject to final field survey and also to the requirements of Council and any other authority which may have requirements under any relevant legislation

Final surface contours shown hereon have been drawn from data supplied by Covey Associates Pty Ltd.

Depth of fill values shown are calculated from the lower of the pre-development surface or the temporary basin surface.

Compaction of any fill material placed on this site shall be completed to level one inspection and testing services in accordance with AS3798-2007.

Copyright © Veris Australia Pty Ltd 1/07/2020.

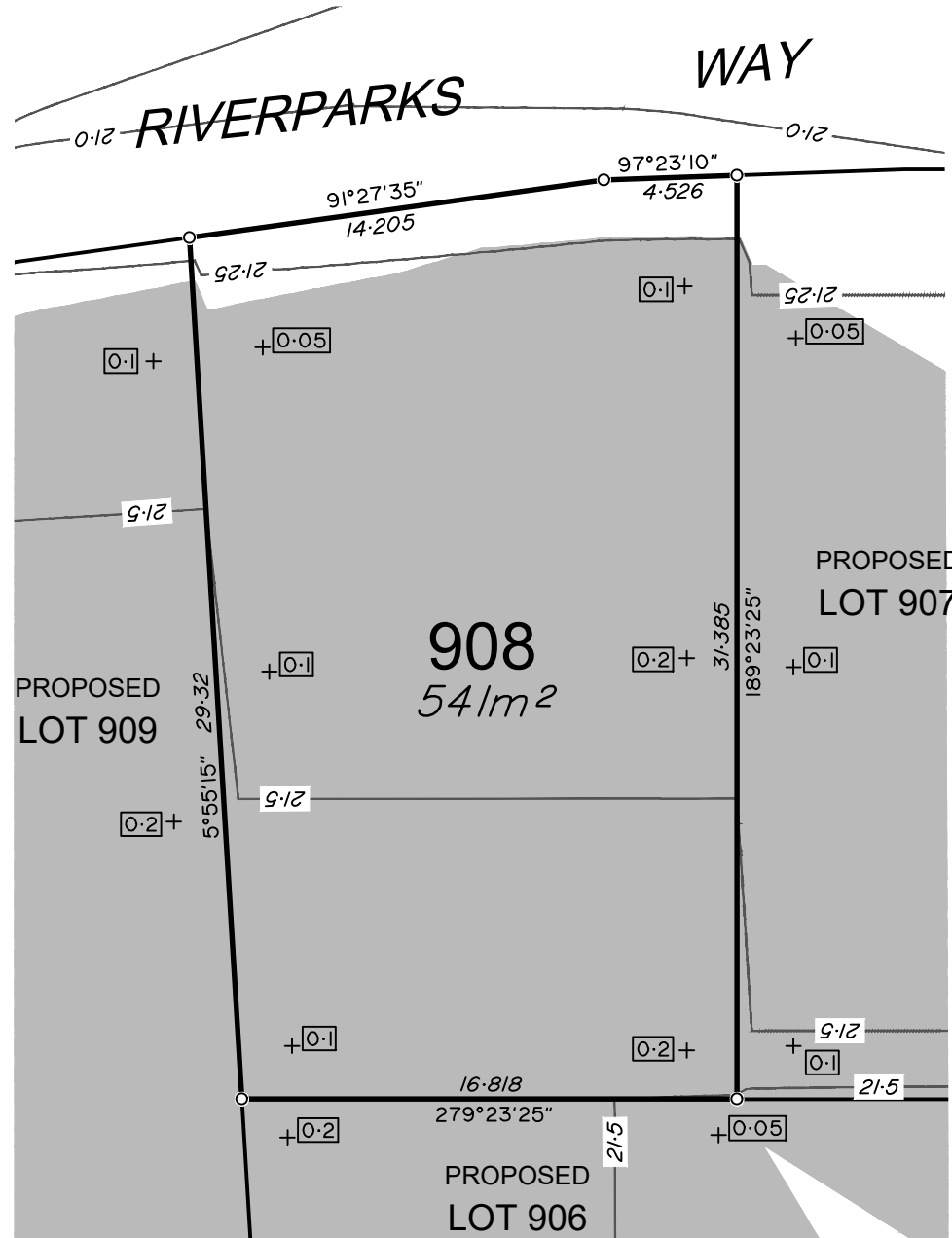
## LEGEND

Final surface contours based on A.H.D. datum at an interval of 0.25m, shown as: — 21.75 —

Where applicable, areas to be filled from the pre-development surface shown as:-



Depth of fill, in metres, shown as:- +1.9



## RIVERPARKS STAGE 9A

For  
NORTHERLY PROJECTS PTY LTD

#### IMPORTANT NOTES:

(These notes are an integral part of this plan)  
This plan has been prepared for NORTHERLY PROJECTS PTY LTD for the purposes of a Disclosure Plan Under the Land Sales Act 1984 (as amended).  
It is not to be used by any other person or corporation or for any other purposes and is subject to the following limitations:

Please refer to the approved Development Application for conditions relating to the LOT and to approved Operational Works drawings for services location and possible easements.

THESE DESIGNS AND DRAWINGS ARE COPYRIGHT AND ARE NOT TO BE USED OR REPRODUCED WITHOUT THE WRITTEN PERMISSION OF VERIS

#### Data Sources

Cadastral Boundaries SP232387  
Final Surface Contours  
Riverparks 9A output.12daz  
Engineering Design  
Riverparks 9A output.12daz  
Pre-development Surface  
Riverparks 9A output.12daz

Issue	Revisions	Date	Drawn
A	Original	01/07/2020	G.J.F.
Locality:	UPPER CABOOLTURE		
Local Authority:	MBRC		
Horizontal Meridian:	MGA Vide GNSS		
Vertical Level Datum:	AHD D		
Scale:	1:250 @ A4		
Designed:	Covey Associates		
Drawn:	G.J.F 01/07/2020		
Checked:	K.J.J 02/07/2020		
Plot Date:	03 Jul, 2020		
Computer File Ref:	31132 St9A DPs(A).DWG		

DISCLOSURE PLAN  
of Proposed LOT 908  
being part of  
Lot 109 on SP307946



BRISBANE (07) 3666 4700 WHITSUNDAYS (07) 4945 1722  
MACKAY (07) 4951 2911 CAIRNS (07) 4051 6722

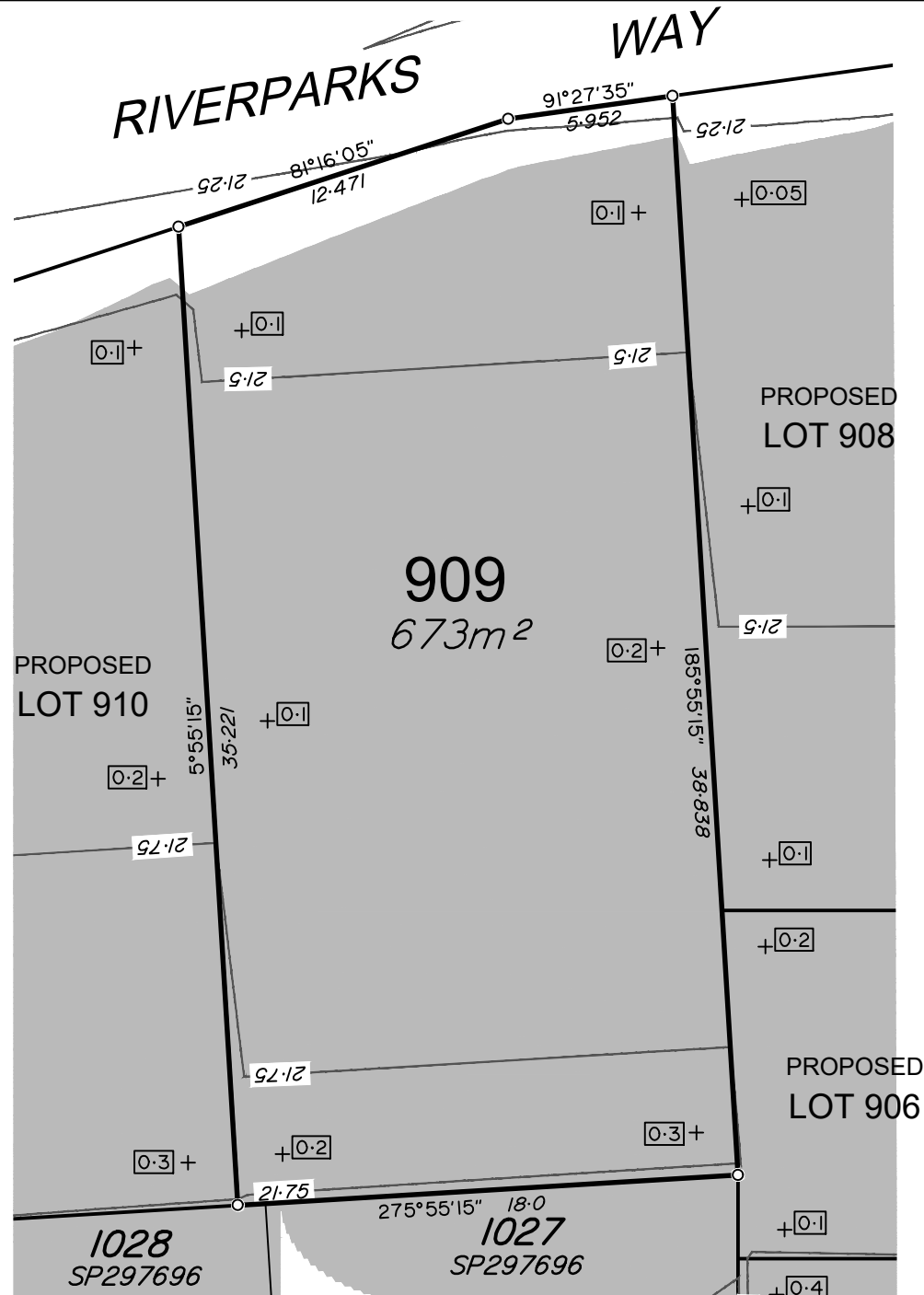
veris.com.au  
ACN 615 735 727  
Veris Australia Pty Ltd

Drawing No 431132-9A-DP908 Issue A





# RIVERPARKS WAY



## ADDITIONAL NOTES:

The LOT dimensions and area shown hereon are subject to final field survey and also to the requirements of Council and any other authority which may have requirements under any relevant legislation

Final surface contours shown hereon have been drawn from data supplied by Covey Associates Pty Ltd.

Depth of fill values shown are calculated from the lower of the pre-development surface or the temporary basin surface.

Compaction of any fill material placed on this site shall be completed to level one inspection and testing services in accordance with AS3798-2007.

Copyright © Veris Australia Pty Ltd 1/07/2020.

## LEGEND

Final surface contours based on A.H.D. datum at an interval of 0.25m, shown as: — 21.75 —

Where applicable, areas to be filled from the pre-development surface shown as:-



Depth of fill, in metres, shown as:- +1.9



## RIVERPARKS STAGE 9A

For  
NORTHERLY PROJECTS PTY LTD

### IMPORTANT NOTES:

(These notes are an integral part of this plan)

This plan has been prepared for NORTHERLY PROJECTS PTY LTD for the purposes of **A Disclosure Plan Under the Land Sales Act 1984 (as amended)**.

It is not to be used by any other person or corporation or for any other purposes and is subject to the following limitations:

Please refer to the approved Development Application for conditions relating to the LOT and to approved Operational Works drawings for services location and possible easements.

THESE DESIGNS AND DRAWINGS ARE COPYRIGHT AND ARE NOT TO BE USED OR REPRODUCED WITHOUT THE WRITTEN PERMISSION OF VERIS

### Data Sources

Cadastral Boundaries SP232387  
Final Surface Contours  
Riverparks 9A output.12daz  
Engineering Design  
Riverparks 9A output.12daz  
Pre-development Surface  
Riverparks 9A output.12daz

A	Original	01/07/2020	G.J.F.
Issue	Revisions	Date	Drawn
Locality:	UPPER CABOOLTURE		
Local Authority:	MBRC		
Horizontal Meridian:	MGA Vide GNSS		
Vertical Level Datum:	AHD D		
Scale:	1:250 @ A4		
Designed:	Covey Associates		
Drawn:	G.J.F 01/07/2020		
Checked:	K.J.J 02/07/2020		
Plot Date:	03 Jul, 2020		
Computer File Ref:	31132 St9A DPs(A).DWG		

**DISCLOSURE PLAN**  
of Proposed LOT 909  
being part of  
Lot 109 on SP307946



BRISBANE (07) 3666 4700 WHITSUNDAYS (07) 4945 1722  
MACKAY (07) 4951 2911 CAIRNS (07) 4051 6722

veris.com.au

ACN 615 735 727  
Veris Australia Pty Ltd

Drawing No 431132-9A-DP 909 Issue A



#### ADDITIONAL NOTES:

The LOT dimensions and area shown hereon are subject to final field survey and also to the requirements of Council and any other authority which may have requirements under any relevant legislation

Final surface contours shown hereon have been drawn from data supplied by Covey Associates Pty Ltd.

Depth of fill values shown are calculated from the lower of the pre-development surface or the temporary basin surface.

Compaction of any fill material placed on this site shall be completed to level one inspection and testing services in accordance with AS3798-2007.

Copyright © Veris Australia Pty Ltd 1/07/2020.

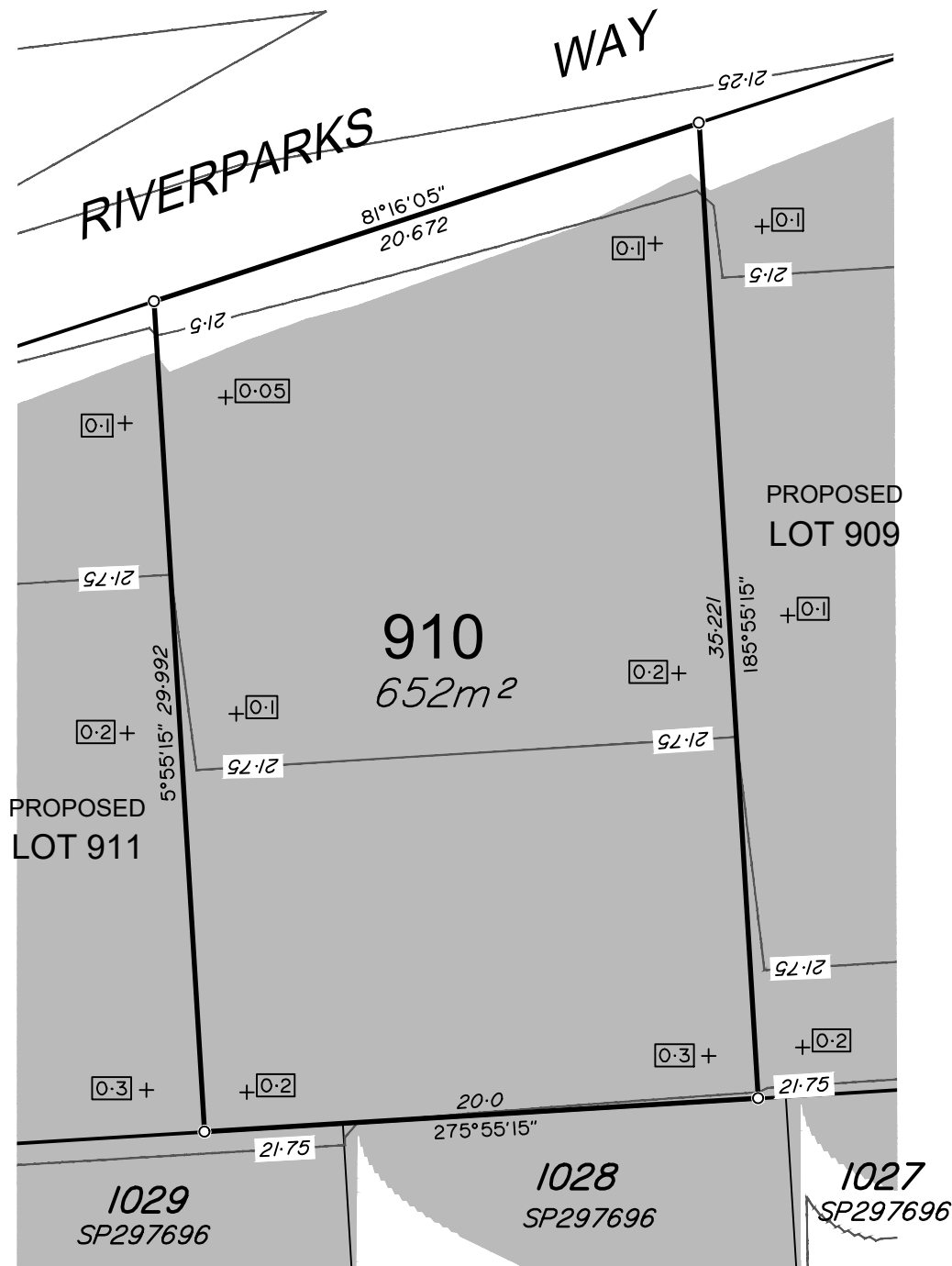
## LEGEND

Final surface contours based on A.H.D. datum at an interval of 0.25m, shown as: — 21.75 —

Where applicable, areas to be filled from the pre-development surface shown as:-



Depth of fill, in metres, shown as:- +1.9



## RIVERPARKS STAGE 9A

For  
NORTHERLY PROJECTS PTY LTD

#### IMPORTANT NOTES:

(These notes are an integral part of this plan)

This plan has been prepared for NORTHERLY PROJECTS PTY LTD for the purposes of **A Disclosure Plan Under the Land Sales Act 1984 (as amended)**.

It is not to be used by any other person or corporation or for any other purposes and is subject to the following limitations:

Please refer to the approved Development Application for conditions relating to the LOT and to approved Operational Works drawings for services location and possible easements.

THESE DESIGNS AND DRAWINGS ARE COPYRIGHT AND ARE NOT TO BE USED OR REPRODUCED WITHOUT THE WRITTEN PERMISSION OF VERIS

#### Data Sources

Cadastral Boundaries SP232387  
Final Surface Contours  
Riverparks 9A output.12daz  
Engineering Design  
Riverparks 9A output.12daz  
Pre-development Surface  
Riverparks 9A output.12daz

Issue	Revisions	Date	Drawn
A	Original	01/07/2020	G.J.F.

Locality: UPPER CABOOLTURE  
Local Authority: MBRC  
Horizontal Meridian: MGA Vide GNSS  
Vertical Level Datum: AHD D  
Scale: 1:250 @ A4  
Designed: Covey Associates  
Drawn: G.J.F 01/07/2020  
Checked: K.J.J 02/07/2020  
Plot Date: 03 Jul, 2020  
Computer File Ref: 31132 St9A DPs(A).DWG

**DISCLOSURE PLAN**  
of Proposed LOT 910  
being part of  
Lot 109 on SP307946



BRISBANE (07) 3666 4700  
WHITSUNDAYS (07) 4945 1722  
MACKAY (07) 4951 2911  
CAIRNS (07) 4051 6722

veris.com.au  
ACN 615 735 727  
Veris Australia Pty Ltd

Drawing No 431132-9A-DP910 Issue A





## LEGEND

Final surface contours based on A.H.D. datum at an interval of 0.25m, shown as: — 21.75 —

Where applicable, areas to be filled from the pre-development surface shown as:-



Depth of fill, in metres, shown as:- +[1.9]

### ADDITIONAL NOTES:

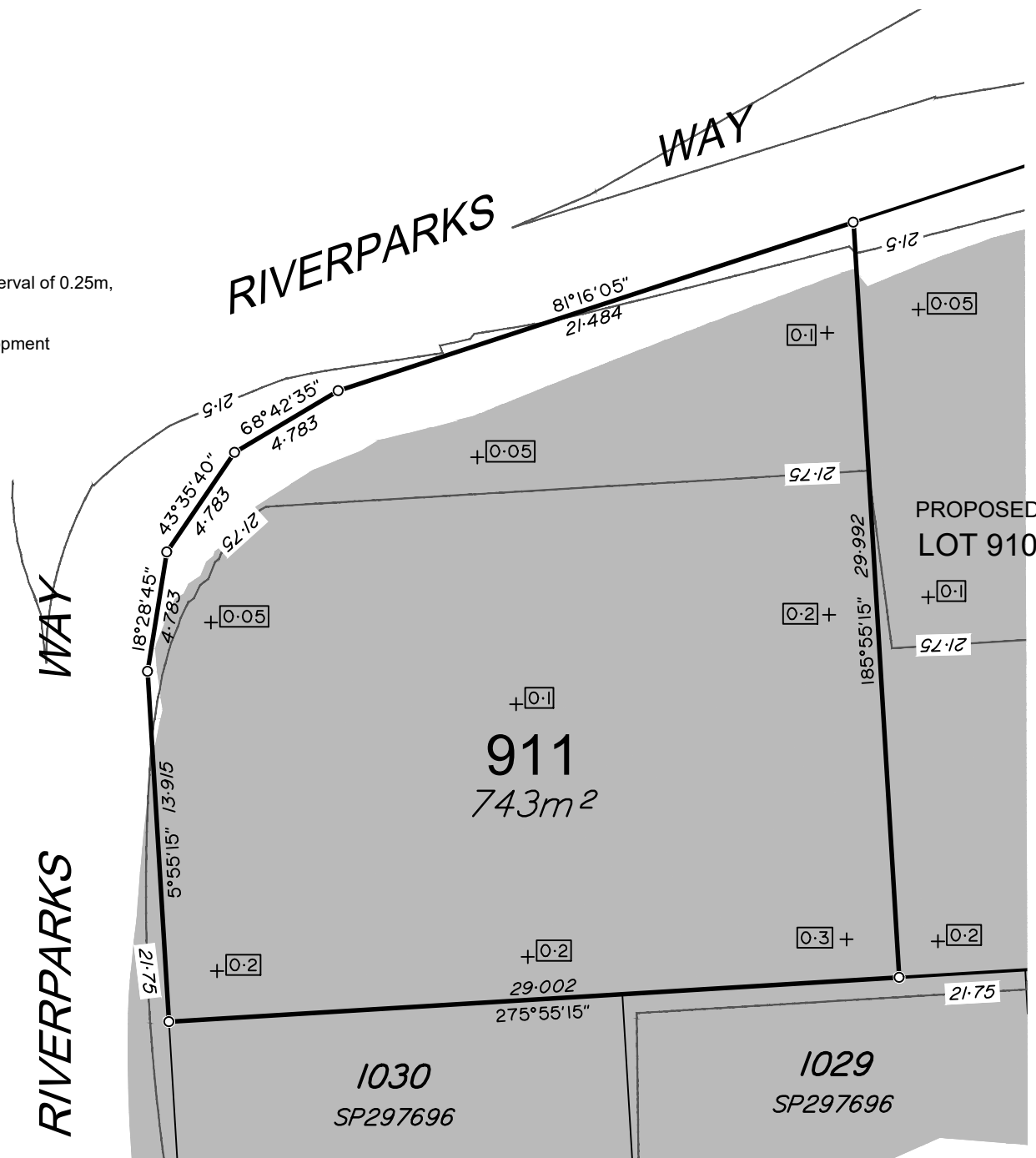
The LOT dimensions and area shown hereon are subject to final field survey and also to the requirements of Council and any other authority which may have requirements under any relevant legislation

Final surface contours shown hereon have been drawn from data supplied by Covey Associates Pty Ltd.

Depth of fill values shown are calculated from the lower of the pre-development surface or the temporary basin surface.

Compaction of any fill material placed on this site shall be completed to level one inspection and testing services in accordance with AS3798-2007.

Copyright © Veris Australia Pty Ltd 1/07/2020.



## RIVERPARKS STAGE 9A

For  
NORTHERLY PROJECTS PTY LTD

### IMPORTANT NOTES:

(These notes are an integral part of this plan)

This plan has been prepared for NORTHERLY PROJECTS PTY LTD for the purposes of **A Disclosure Plan Under the Land Sales Act 1984 (as amended)**.

It is not to be used by any other person or corporation or for any other purposes and is subject to the following limitations:

Please refer to the approved Development Application for conditions relating to the LOT and to approved Operational Works drawings for services location and possible easements.

THESE DESIGNS AND DRAWINGS ARE COPYRIGHT AND ARE NOT TO BE USED OR REPRODUCED WITHOUT THE WRITTEN PERMISSION OF VERIS

### Data Sources

Cadastral Boundaries SP232387  
Final Surface Contours  
Riverparks 9A output.12daz  
Engineering Design  
Riverparks 9A output.12daz  
Pre-development Surface  
Riverparks 9A output.12daz

Issue	Revisions	Date	Drawn
A	Original	01/07/2020	G.J.F.

Locality: UPPER CABOOLTURE  
Local Authority: MBRC  
Horizontal Meridian: MGA Vide GNSS  
Vertical Level Datum: AHD D  
Scale: 1:250 @ A4  
Designed: Covey Associates  
Drawn: G.J.F 01/07/2020  
Checked: K.J.J 02/07/2020  
Plot Date: 03 Jul, 2020  
Computer File Ref: 31132 S9A DPs(A).DWG

**DISCLOSURE PLAN**  
of Proposed LOT 911  
being part of  
Lot 109 on SP307946



BRISBANE (07) 3666 4700 WHITSUNDAYS (07) 4945 1722  
MACKAY (07) 4951 2911 CAIRNS (07) 4051 6722

veris.com.au  
ACN 615 735 727  
Veris Australia Pty Ltd

Drawing No 431132-9A-DP911 Issue A

