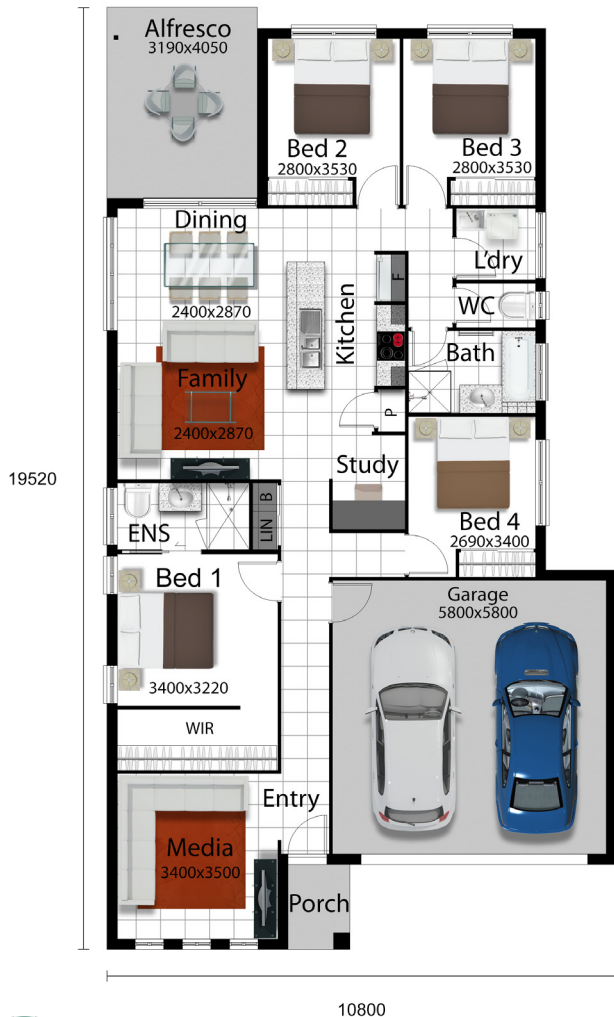


DAKOTA 185

We include what many others call extras!



Lot 1122 Crabapple St
RiverParks Estate
Land Size: 400m²

HOUSE & LAND PRICE:
\$359,800

Living	132.27m ²
Car Accom	37.31m ²
Alfresco	12.92m ²
Porch	2.36m ²
Total Area	184.86m²

PACKAGE INCLUDES:



- 25 Year Structural Guarantee*
- TURN KEY HOME
- Smart Stone Kitchen bench
- Quality European Appliances
- 2 x Split System Air Conditioning
- Exposed Aggregate Driveway
- 6 Star Energy Rating
- Fly Screens throughout
- Quality Carpets & Tiles
- Colourbond Roof

Kathy 0417 769 118
 or
 Murray 0408 788 202



Fresh Homes

BUILT NEW JUST FOR YOU



Head Office: 4067 Pacific Highway Loganholme : **3806 0603** | freshhomes.com.au

Plans and images are for illustration only. Floor plan and elevation as shown in this brochure are artists impressions only and do not form any part of the contract to build. Standard plans and specifications take precedence over any design, elevation or brochure. These designs are exclusively the property of Fresh Homes and as such are copyright. QBCC No 1088603. Prices may change without notice. *Applies to building structure only