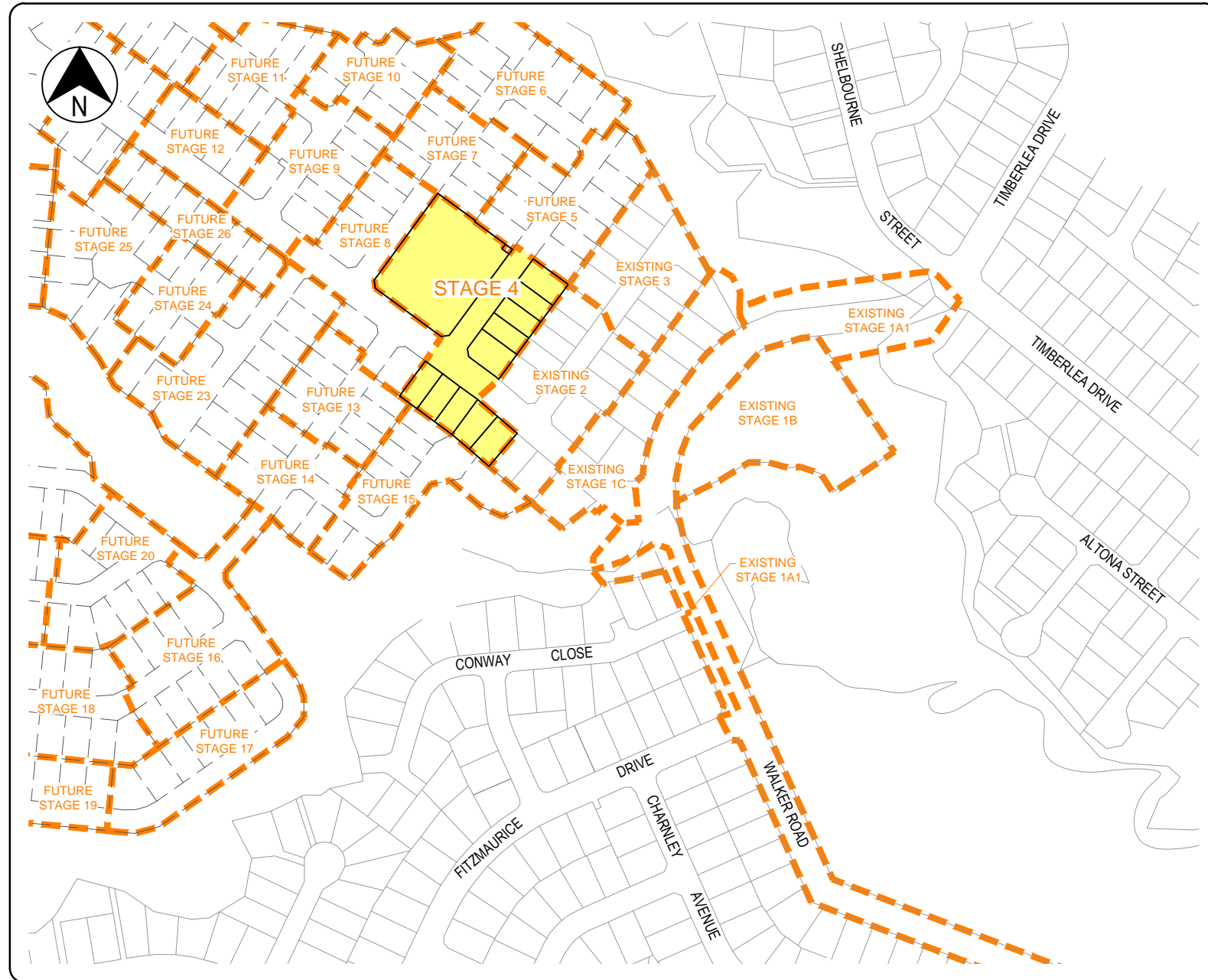


# CHERRYBROOK - STAGE 4



LOCALITY PLAN  
N.T.S.

## DRAWING INDEX

DRAWING No.	DRAWING TITLE
IH035500-CI-DG-0401	LOCALITY PLAN AND DRAWING INDEX
IH035500-CI-DG-0402	GENERAL ARRANGEMENT
IH035500-CI-DG-0403	EARTHWORKS
IH035500-CI-DG-0404	MISCELLANEOUS SECTIONS AND DETAILS
IH035500-CI-DG-0405	ROAD LONGITUDINAL SECTIONS
IH035500-CI-DG-0406	ROAD CROSS SECTIONS
IH035500-CI-DG-0407	INTERSECTION DETAILS
IH035500-CI-DG-0408	STORMWATER DRAINAGE
IH035500-CI-DG-0409	STORMWATER DRAINAGE LONGITUDINAL SECTIONS
IH035500-CI-DG-0410	SEWERAGE
IH035500-CI-DG-0411	SEWERAGE LONGITUDINAL SECTIONS
IH035500-CI-DG-0412	WATER RETICULATION
IH035500-CI-DG-0413	EROSION AND SEDIMENT CONTROL STRATEGY PHASE 1 - TOPSOIL STRIPPING
IH035500-CI-DG-0414	EROSION AND SEDIMENT CONTROL STRATEGY PHASE 2 - EARTHWORKS
IH035500-CI-DG-0415	EROSION AND SEDIMENT CONTROL STRATEGY PHASE 3 - ROADWORKS
IH035500-CI-DG-0416	EARTHWORKS SPOIL PLAN
IH035500-CI-DG-0417	LINEMARKING PLAN

## INSTITUTE OF PUBLIC WORKS ENGINEERING AUSTRALIA STANDARD DRAWINGS

DRAWING No.	DRAWING TITLE
D-0040	SEDIMENT CONTROL DEVICES - SEDIMENT FENCE, ENTRY/EXIT SEDIMENT TRAP
D-0041	SEDIMENT CONTROL DEVICES - KERB AND FIELD INLETS, CHECK DAMS & STRAW BALE BANKS

## FNQROC STANDARD DRAWINGS

DRAWING No.	DRAWING TITLE
S1000 - S1110	ROADWORKS AND DRAINAGE
S2000 - S2025	WATER
S3000 - S3015	SEWERAGE

DATE: 16/10/2018 2:21:36 PM NAME: MASHFORD, PAUL LOCATION: C:\Users\pmashford\AppData\Local\Temp\proj\Ih035500-CI-DG-0401\_Locality.dwg

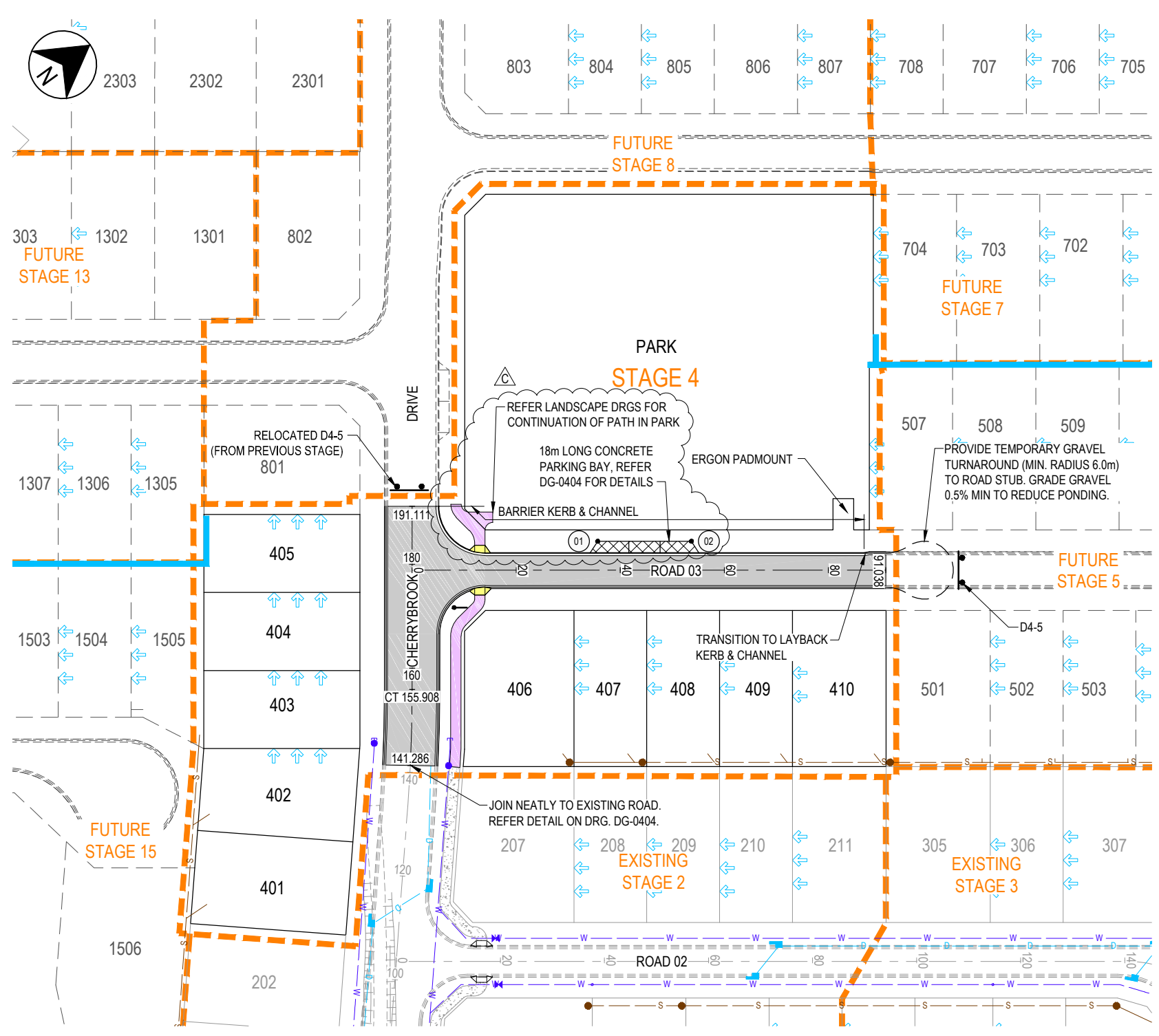
Jacobs Group (Australia) Pty Ltd ABN 62 001 024 095. No part of this document or the information contained may be reproduced or transmitted in any form or by any means electronic or mechanical, including photocopying, recording, or by any information storage and retrieval system, without permission in writing from Jacobs Group (Australia) Pty Ltd.

REV	DATE	DRAWN	REVD	APPD	REVISION	DRAWING NUMBER	REFERENCE DRAWING TITLE
	09.10.18	PAM	RJC	Dmc	RPEQ SIGNED		
B	22.06.17	PAM	RJC	Dmc	DRAWING LIST UPDATED		
A	26.05.17	JAH	RJC	Dmc	INITIAL ISSUE		



ABN 57 001 024 095 and ACN 001 024 095  
Jacobs Group (Australia) Pty Ltd  
2 James Street  
CAIRNS, QLD 4870  
AUSTRALIA  
Tel: +61 7 4031 4599  
Fax: +61 7 4031 3967  
Web: www.jacobs.com

CLIENT WALKER ROAD PTY LTD		TITLE LOCALITY PLAN AND DRAWING INDEX	
PROJECT CHERRYBROOK - STAGE 4		SCALE N.T.S.	
DRAWN JAH	DRAWING CHECK RJB	REVIEWED D.McEWAN	APPROVED [Signature]
DESIGNED PAM	DESIGN REVIEW RJC	DATE 26.05.17	DATE 09.10.18
DRAWING No. IH035500-CI-DG-0401		REV C	



**NOTES**

**GENERAL**

- FOR EARTHWORKS DETAILS REFER DRG. DG-0403.
- FOR TYPICAL CROSS SECTIONS AND CONTROL LINE SETOUT DETAILS REFER DRG. DG-0404.
- FOR KERB PROFILE DETAILS REFER FNQROC STD. DRG. S1000.
- FOR KERB RAMP DETAILS REFER FNQROC STD. DRG. S1016.
- FOR STREET NAME POST DETAILS REFER FNQROC STD. DRG. S1040.
- CONTRACTOR TO PROVIDE PUBLIC NOTIFICATION/SIGNS (REFER FNQROC DEVELOPMENT MANUAL CP1.11).
- CLEARED VEGETATION SHALL BE MULCHED ON SITE BY THE CONTRACTOR.
- FOR CONCRETE PATHWAY DETAILS REFER FNQROC STD. DRG. S1035.
- JOIN NEATLY TO EXISTING ROADS. REFER DETAIL ON DRG. DG-0404.

**EXISTING SERVICES**

- EXISTING SERVICES ARE PLOTTED FROM THE BEST INFORMATION AVAILABLE. NO RESPONSIBILITY IS TAKEN BY THE PRINCIPAL OR SUPERINTENDENT FOR THE ACCURACY AND COMPLETENESS OF THE INFORMATION SHOWN.
- PRIOR TO THE COMMENCEMENT OF CONSTRUCTION THE CONTRACTOR IS TO ESTABLISH ON SITE THE EXACT POSITION OF ALL UNDERGROUND SERVICES IN THE PROPOSED WORKS AREA. METHODS FOR ACHIEVING THIS WILL INCLUDE BUT NOT BE LIMITED TO:
  - CAREFUL EXAMINATION OF THE CONTRACT DRAWINGS.
  - CONSULTATION WITH THE RELEVANT SERVICE AUTHORITIES.
  - COMPREHENSIVELY SCANNING THE AFFECTED AREAS WITH A CABLE DETECTOR AND MARKING ON THE GROUND THE POSITION OF ALL SERVICES.
  - HAND EXCAVATING TO EXPOSE ALL SUCH SERVICES WHICH MAY BE AFFECTED BY THE PROPOSED WORKS UNDER THE DIRECTION OF THE RELEVANT SERVICE AUTHORITY.
- THE CONTRACTOR IS TO BRING TO THE SUPERINTENDENT'S ATTENTION ANY DISCREPANCIES BETWEEN THE EXISTING SERVICES THUS IDENTIFIED AND DOCUMENTED SERVICES WHICH MIGHT AFFECT THE PROPOSED WORKS. APPROPRIATE MEASURES TO RESOLVE ANY CONFLICTS WILL BE DOCUMENTED BY THE SUPERINTENDENT.

**VEGETATION & CLEARING**

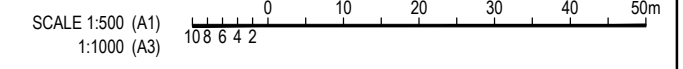
- PRIOR TO THE REMOVAL OF ANY TREE, AN INSPECTION MUST BE CARRIED OUT OF ANY SIGNS OF PROTECTED WILDLIFE INCLUDING NESTS AND ANIMAL HABITATS. SHOULD ANY RECENT WILDLIFE ACTIVITY BE IDENTIFIED, REMOVAL OF THE TREE MUST NOT OCCUR UNTIL THE ANIMAL HAS VACATED THE AREA OF IMMEDIATE DANGER. IF THE ANIMAL DOES NOT MOVE FROM THE AREA OF DANGER, THE QUEENSLAND PARKS AND WILDLIFE MUST BE CONTACTED FOR ADVICE.
- CAIRNS REGIONAL COUNCIL MUST BE NOTIFIED TWO DAYS PRIOR TO THE PROPOSED DATE OF COMMENCEMENT OF ANY APPROVED VEGETATION CLEARING TO FACILITATE COMMUNITY AWARENESS OF SUCH WORKS.
- VEGETATION TO BE RETAINED MUST BE ADEQUATELY DEFINED BY FENCING, FLAGGING OR BARRIER MESH FOR PROTECTION PURPOSES PRIOR TO CONSTRUCTION COMMENCING ON SITE.
- A MINIMUM 2m WIDE BUFFER SHALL BE PROVIDED AROUND THE VEGETATION TO BE RETAINED. THIS BUFFER MUST CONSIST OF SUITABLE FENCING, FLAGGING OR BARRIER MESH TO ENSURE THAT MACHINERY, EQUIPMENT OR CONSTRUCTION MATERIALS ARE NOT STORED OR USED WITHIN THIS AREA. THIS BUFFER IS TO BE ESTABLISHED PRIOR TO THE COMMENCEMENT OF ANY WORKS ON SITE AND MUST BE MAINTAINED AT ALL TIMES FOR THE DURATION OF CONSTRUCTION.
- CLEARED VEGETATION TO BE MULCHED AND SPREAD OVER THE CLEARED AREA FOR EROSION AND SEDIMENT CONTROL OR LANDSCAPING PURPOSES.

**LEGEND**

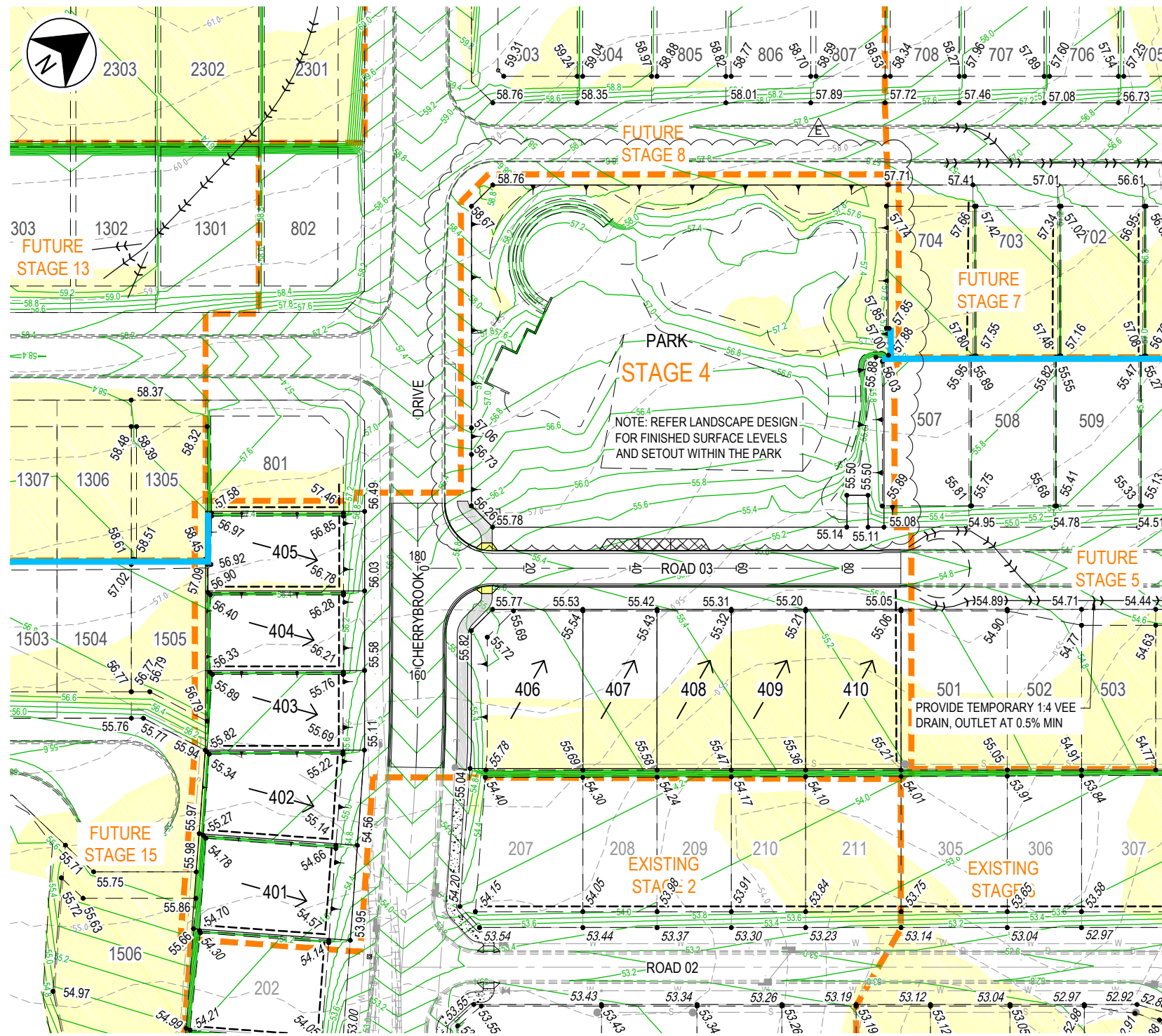
- ASPHALT SEALED PAVEMENT
- CONCRETE PATHWAY (2m WIDE U.N.O.)
- KERB RAMP
- STREET/PATHWAY SIGN
- STAGE BOUNDARY
- D4-5
- EXISTING STORMWATER
- EXISTING SEWER
- EXISTING WATER
- BUILD TO BOUNDARY LINE
- CONCRETE HARDSTAND PARKING

**SETOUT POINTS**

POINT	COORDINATES	
	EASTING	NORTHING
01	363228.928	8119082.674
02	363239.580	8119097.184



<p><b>JACOBS</b></p> <p>ABN 37 001 024 095 and ACN 001 024 095 Jacobs Group (Australia) Pty Ltd 2 James Street CAIRNS, QLD 4870 AUSTRALIA</p> <p>Tel: +61 7 4031 4599 Fax: +61 7 4031 3967 Web: www.jacobs.com</p>				<p>CLIENT WALKER ROAD PTY LTD PROJECT CHERRYBROOK - STAGE 4</p>				<p>TITLE GENERAL ARRANGEMENT</p>			
<p>DRAWN JAH DESIGNED PAM</p>		<p>DRAWING CHECK RJB DESIGN REVIEW RJC</p>		<p>REVIEWED D.McEWAN DATE 26.05.17</p>		<p>APPROVED DATE 09.10.18</p>		<p>SCALE 1:500 (A1) DRAWING No. IH035500-CI-DG-0402</p>		<p>REV C</p>	
REV	DATE	DRAWN	REV'D	APP'D	REVISION	DRAWING NUMBER	REFERENCE DRAWING TITLE				
C	09.10.18	PAM	RJC	DmC	PATHWAY REVISED AND PARKING ADDED						
B	22.06.17	PAM	RJC	DmC	BUILD TO BOUNDARY LINE SHOWN, PADMOUNT LOCATION UPDATED						
A	26.05.17	JAH	RJC	DmC	INITIAL ISSUE						

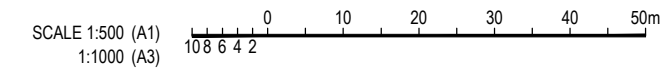
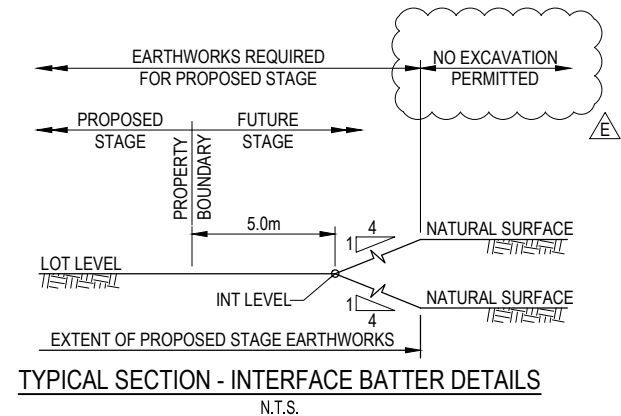
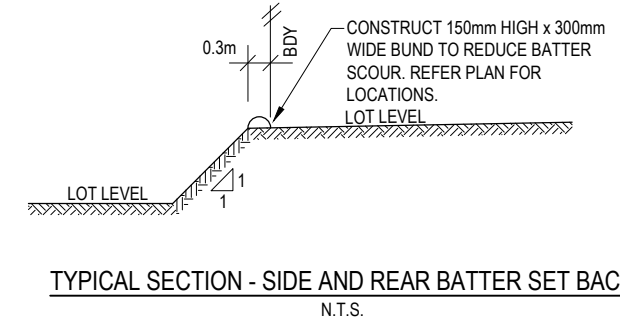
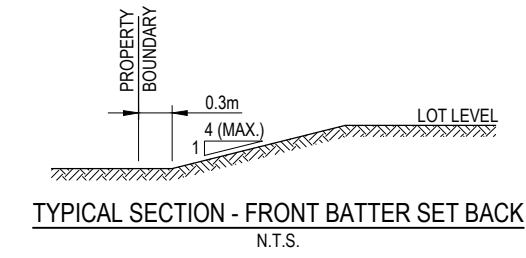


**NOTES**

- FOR NOTES REGARDING EXISTING SERVICES REFER DRG. DG-0402.
- ALL BATTERS TO ROAD FRONTAGES OF LOTS ARE 1 ON 5 OR FLATTER. ALL OTHER BATTERS ARE 1 ON 1 U.N.O.
- FOR STORMWATER PIT LOCATIONS REFER DRG. DG-0408.
- BATTERS TO BE ADJUSTED LOCALLY AROUND SEWER MANHOLES. REFER DRG. DG-0410 FOR DETAILS.
- UPON COMPLETION ALL BATTERS STEEPER THAN 1 IN 2 AND HIGHER THAN 1.5m SHALL REQUIRE CERTIFICATION OF STABILITY BY A GEOTECHNICAL ENGINEER.
- REFER TO "TYPICAL SECTION - INTERFACE BATTER DETAILS" FOR EXTENT OF EXCAVATION. NO EXCAVATION IS PERMITTED IN FUTURE STAGES.
- FILLING FOR EACH DISTINCT FOOTPRINT MUST BE COMPLETED AND REHABILITATED PRIOR TO COMMENCING FILLING ON THE OTHER PARTS OF THE SITE.
- REFER TO DG-0404 FOR ALTERNATE BATTER/RETAINING WALL DETAIL.

**LEGEND**

- AREAS OF FILL
- FINISHED SURFACE LEVEL
- NATURAL SURFACE LEVEL
- FALL OF LOTS
- CONCRETE PATHWAY (2m WIDE U.N.O.)
- TEMPORARY CUT-OFF DRAIN
- BATTER
- STAGE BOUNDARY
- DESIGN SURFACE CONTOURS (0.2m INTERVAL)
- BATTER BUND
- RETAINING WALL (CONCRETE SLEEPERS, DESIGN BY OTHERS)
- EXISTING SURFACE CONTOURS (0.5m INTERVAL)
- EXISTING STORMWATER
- EXISTING SEWER
- EXISTING WATER



REV	DATE	DRAWN	REV'D	APP'D	REVISION	DRAWING NUMBER	REFERENCE DRAWING TITLE
E	09.10.18	PAM	RJC	DMc	EARTHWORKS REVISED IN PARK		
D	19.10.17	PAM	RJC	DMc	REDUCED CUT WITHIN THE PARK		
C	24.07.17	PAM	RJC	DMc	EARTHWORKS REVISED AT STAGE 13-15 INTERFACE		
B	22.06.17	PAM	RJC	DMc	PADMOUNT LOCATION UPDATED		
A	26.05.17	JAH	RJC	DMc	INITIAL ISSUE		

ASB 57 001 024 095 and ACN 001 024 095  
 Jacobs Group (Australia) Pty Ltd  
 2 James Street  
 CAIRNS, QLD 4870  
 AUSTRALIA

Tel: +61 7 4031 4599  
 Fax: +61 7 4031 3967  
 Web: www.jacobs.com

CLIENT WALKER ROAD PTY LTD		TITLE EARTHWORKS	
PROJECT CHERRYBROOK - STAGE 4		DRAWING No. IHO35500-CI-DG-0403	
DRAWN JAH	DRAWING CHECK RJB	REVIEWED D.McEWAN	APPROVED <i>[Signature]</i>
DESIGNED PAM	DESIGN REVIEW RJC	DATE 26.05.17	DATE 09.10.18

SCALE 1:500 (A1)	DRAWING No. IHO35500-CI-DG-0403	REV E
---------------------	------------------------------------	----------

**CONTROL LINE CHERRYBROOK DRIVE SETOUT**

CHAINAGE	COORDINATES		BEARING DEG MIN SEC	RADIUS OF CURVATURE	TANGENT LENGTH	ARC LENGTH
	EASTING	NORTHING				
0.000	363357.825	8118956.291	267° 45' 35"	STRAIGHT		
18.166	363339.673	8118955.581	267° 45' 35"	30.000		
IP 29.359	363327.939	8118955.122	-	30.000	11.743	22.386
40.553	363319.011	8118962.750	310° 30' 51"	STRAIGHT		
133.786	363248.131	8119023.318	310° 30' 51"	-300.000		
IP 144.847	363239.718	8119030.507	-	-300.000	11.066	22.122
155.908	363230.798	8119037.057	306° 17' 21"	STRAIGHT		
231.082	363170.205	8119081.549	306° 17' 21"	100.000		
IP 234.969	363167.070	8119083.851	-	100.000	3.889	7.774
238.856	363164.124	8119086.389	310° 44' 35"	-99.998		
IP 242.735	363161.183	8119088.922	-	-99.998	3.881	7.759
246.615	363158.055	8119091.220	306° 17' 51"	STRAIGHT		

**CONTROL LINE ROAD 03 SETOUT**

CHAINAGE	COORDINATES		BEARING DEG MIN SEC	RADIUS OF CURVATURE	TANGENT LENGTH	ARC LENGTH
	EASTING	NORTHING				
0.000	363212.299	8119050.641	36° 16' 51"	STRAIGHT		
169.613	363312.666	8119187.370	36° 16' 51"	-10.000		
IP 177.467	363318.584	8119195.431	-	-10.000	10.000	15.708
185.321	363310.522	8119201.349	306° 16' 51"	STRAIGHT		
245.321	363262.155	8119236.853	306° 16' 51"	-10.000		
IP 253.175	363254.093	8119242.771	-	-10.000	10.000	15.708
261.029	363248.176	8119234.709	216° 16' 51"	STRAIGHT		
430.024	363148.174	8119098.478	216° 16' 51"	STRAIGHT		

**TABLE OF WIDTHS**

ROAD	CARRIAGEWAY WIDTH (m)	VERGE WIDTH (m)		RESERVE WIDTH (m)
		LHS	RHS	
CHERRYBROOK DR	10.00	5.05	5.05	20.10
ROAD 03	6.50	4.50	4.50	15.50

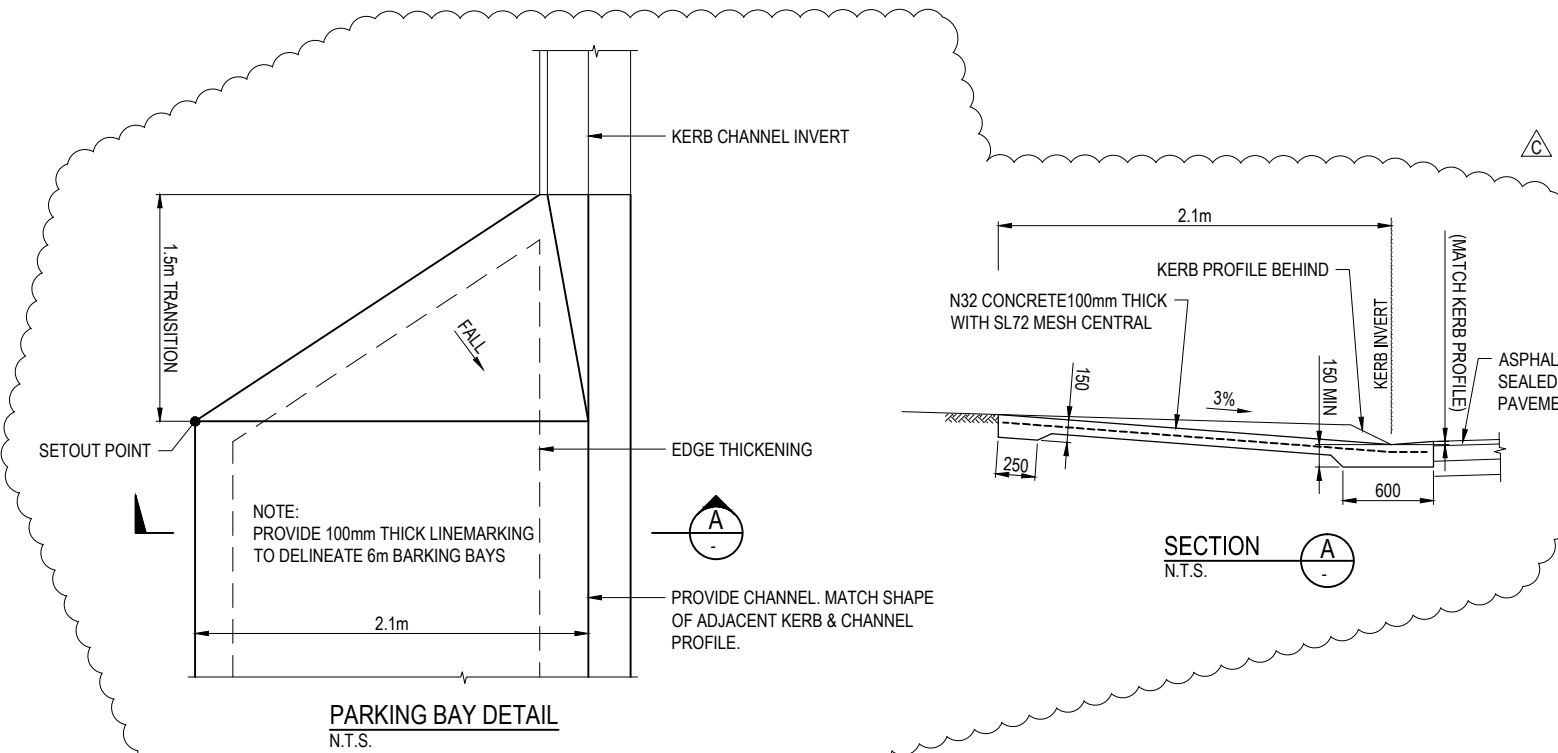
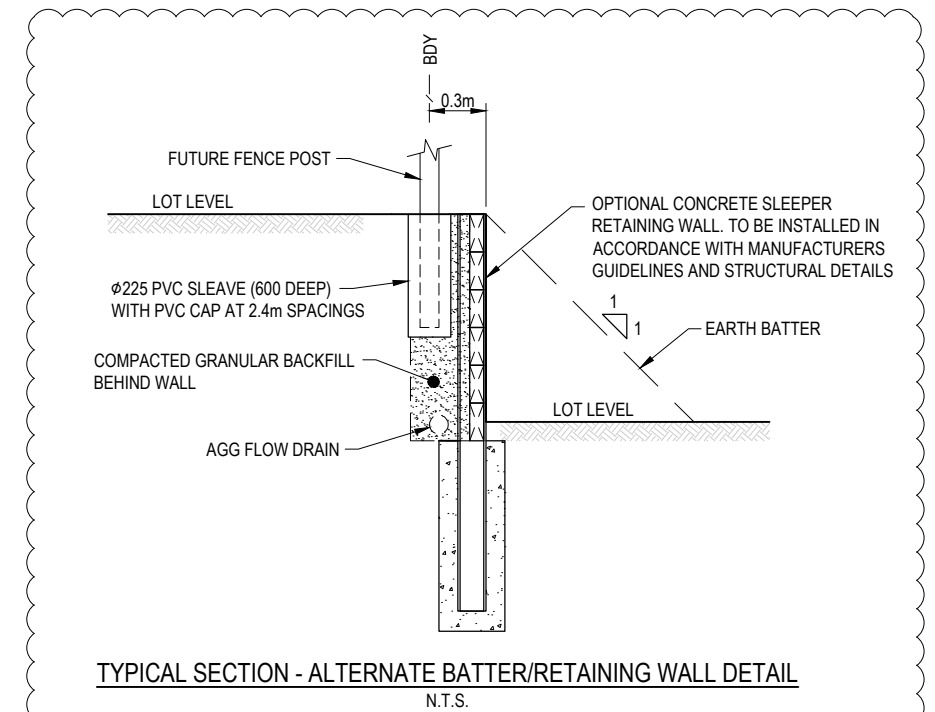
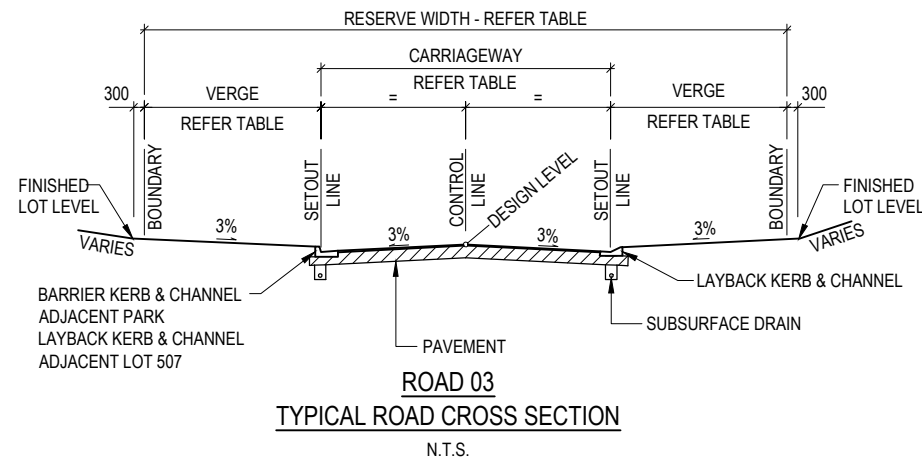
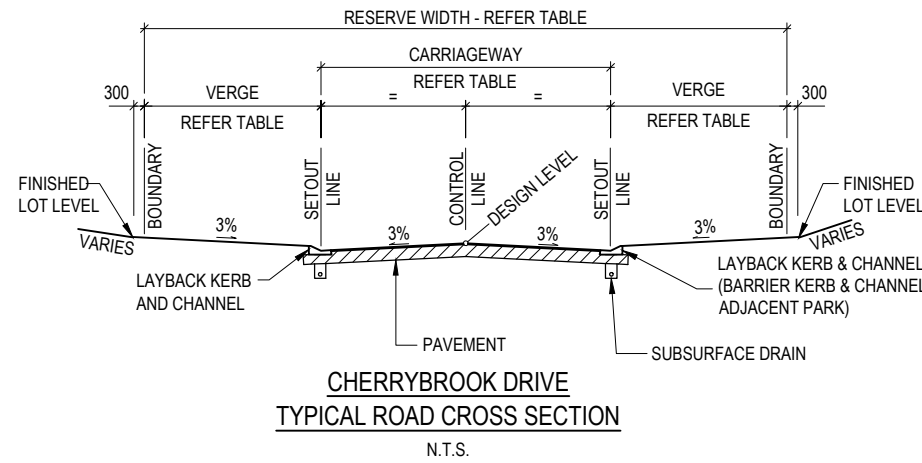
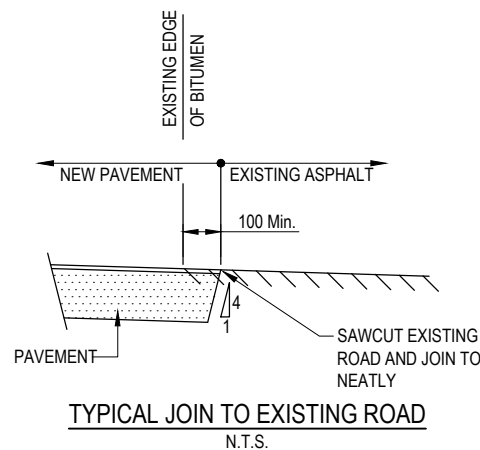
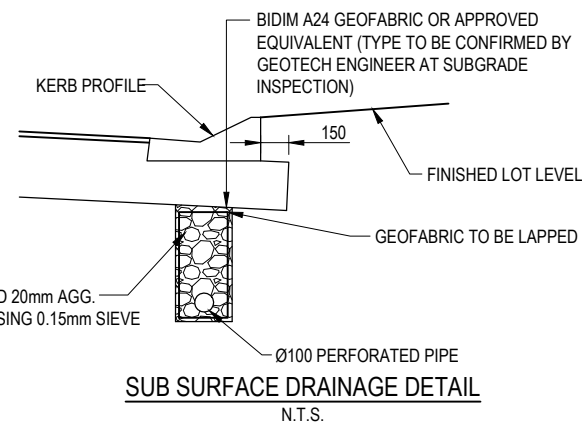
**PROVISIONAL PAVEMENT DETAILS**

ROAD	SURFACING	SUBBASE CBR 45 (mm)	BASE CBR 60 (mm)
CHERRYBROOK DR	30mm ASPHALT	125	125
ROAD 03	30mm ASPHALT	100	100

**NOTES**

PROVISIONAL PAVEMENT DESIGN IS BASED ON AN ASSUMED SUBGRADE SOAKED CBR OF 10. THE CONTRACTOR IS TO CONFIRM SUBGRADE CBR DURING CONSTRUCTION AND THE PAVEMENT DESIGN MAY BE AMENDED ACCORDINGLY BY THE CAIRNS CITY COUNCIL.

ASPHALT SURFACING TO BE INCREASED TO 50mm AT INTERSECTIONS. REFER DRG. DG-0407 FOR LOCATIONS.



REV	DATE	DRAWN	REV'D	APP'D	REVISION	DRAWING NUMBER	REFERENCE DRAWING TITLE
C	09.10.18	PAM	RJC	Dmc	PARKING DETAILS ADDED		
B	22.06.17	PAM	RJC	Dmc	TITLEBLOCK UPDATED		
A	26.05.17	JAH	RJC	Dmc	INITIAL ISSUE		

**JACOBS**

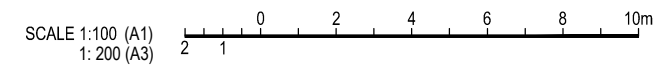
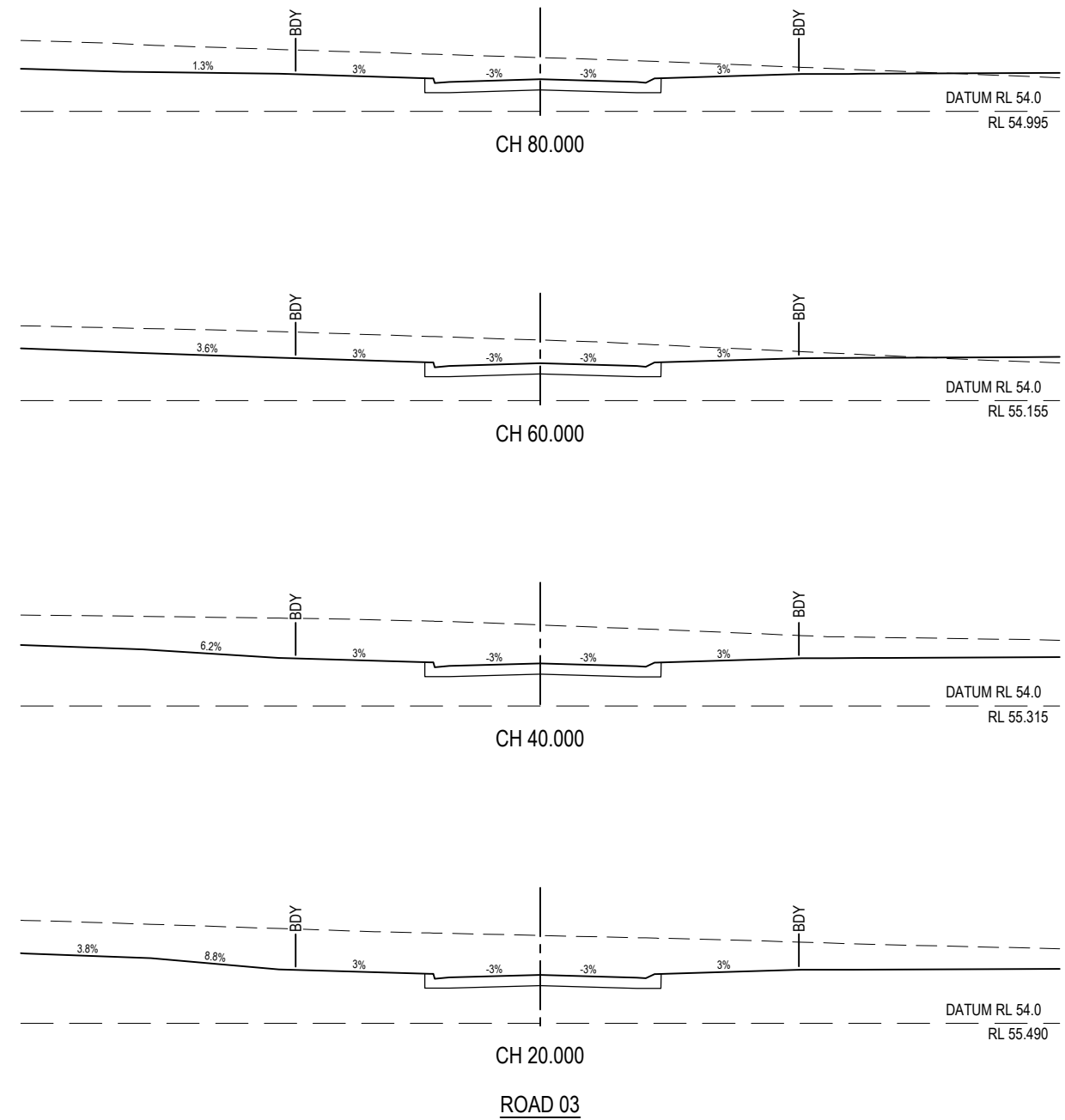
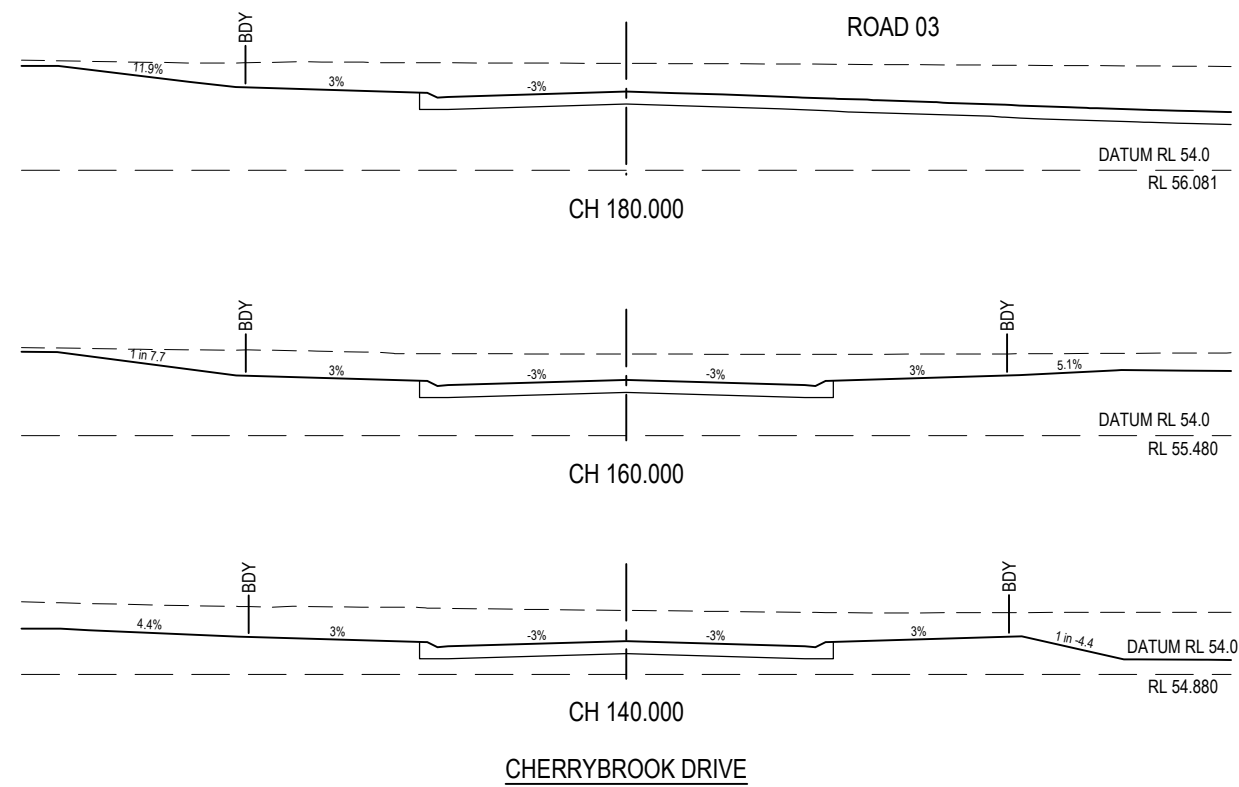
ABN 37 001 024 095 and ACN 001 024 095  
Jacobs Group (Australia) Pty Ltd  
2 James Street  
CAIRNS, QLD 4870  
AUSTRALIA

Tel: +61 7 4031 4599  
Fax: +61 7 4031 3967  
Web: www.jacobs.com

CLIENT	WALKER ROAD PTY LTD		
PROJECT	CHERRYBROOK - STAGE 4		
DRAWN	DRAWING CHECK	REVIEWED	APPROVED
JAH	RJB	D.McEWAN	
DESIGNED	DESIGN REVIEW	DATE	DATE
PAM	RJC	26.05.17	09.10.18

TITLE		MISCELLANEOUS SECTIONS AND DETAILS
SCALE	DRAWING No.	REV
N.T.S.	IHO35500-CI-DG-0404	C





REV	DATE	DRAWN	REV'D	APP'D	REVISION	DRAWING NUMBER	REFERENCE DRAWING TITLE
B	09.10.18	PAM	RJC	DMc	RPEQ SIGNED		
B	22.06.17	PAM	RJC	DMc	TITLEBLOCK UPDATED		
A	26.05.17	JAH	RJC	DMc	INITIAL ISSUE		

ABN 57 001 024 095 and ACN 001 024 095  
 Jacobs Group (Australia) Pty Ltd  
 2 James Street  
 CAIRNS, QLD 4870  
 AUSTRALIA  
 Tel: +61 7 4031 4599  
 Fax: +61 7 4031 3967  
 Web: www.jacobs.com

CLIENT WALKER ROAD PTY LTD			
PROJECT CHERRYBROOK - STAGE 4			
DRAWN JAH	DRAWING CHECK RJB	REVIEWED D.McEWAN	APPROVED <i>[Signature]</i>
DESIGNED PAM	DESIGN REVIEW RJC	DATE 26.05.17	DATE 09.10.18

TITLE ROAD CROSS SECTIONS		SCALE 1:100 (A1)	DRAWING No. IH035500-CI-DG-0406	REV C
---------------------------	--	------------------	---------------------------------	-------



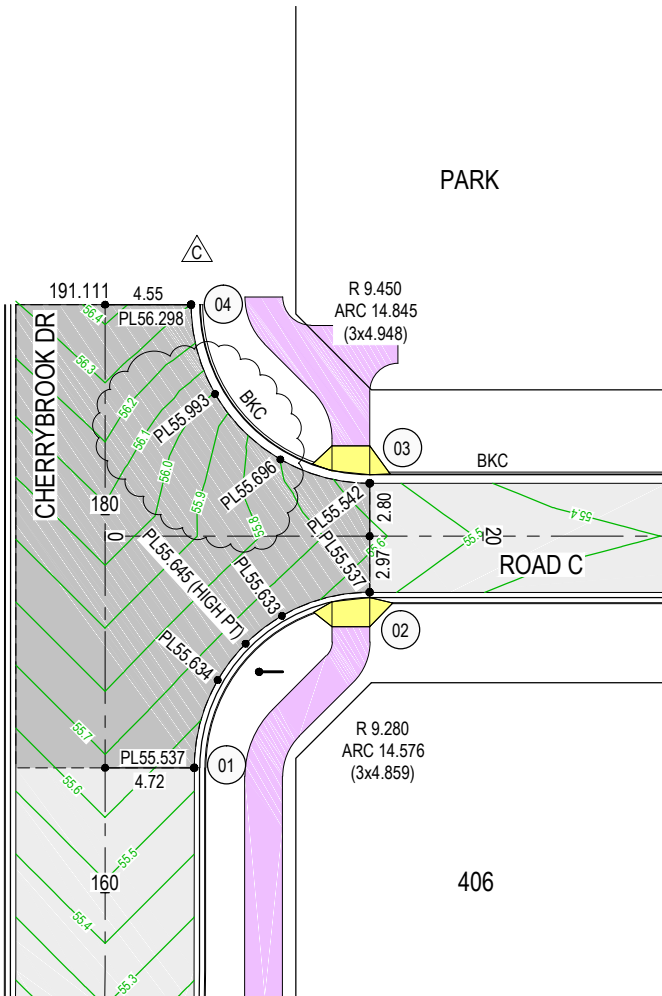
801

405

404

403

PARK



CHERRYBROOK DRIVE & ROAD 03 INTERSECTION

INTERSECTION SETOUT TABLE

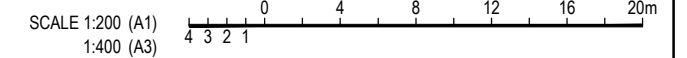
POINT	EASTING	NORTHING
01	363224.965	8119047.196
02	363222.976	8119060.167
03	363218.327	8119063.585
04	363205.116	8119061.559

NOTES

1. ALL KERB SETOUT DETAILS REFER TO THE LIP OF KERB OR FACE OF KERB AS APPLICABLE.
2. FOR KERB PROFILE DETAILS REFER FNQROC STD. DRG. S1000.

LEGEND

- PL44.956 PAVEMENT LEVEL
- (01) SETOUT POINT
- ==== LAYBACK KERB AND CHANNEL
- ==== BKC BARRIER KERB AND CHANNEL
- 57.0 — DESIGN SURFACE CONTOURS (0.1m INTERVAL)
- STREET SIGN
- ▲ KERB RAMP
- CONCRETE PATHWAY (2m WIDE U.N.O.)
- ▨ 50mm ASPHALT SURFACE



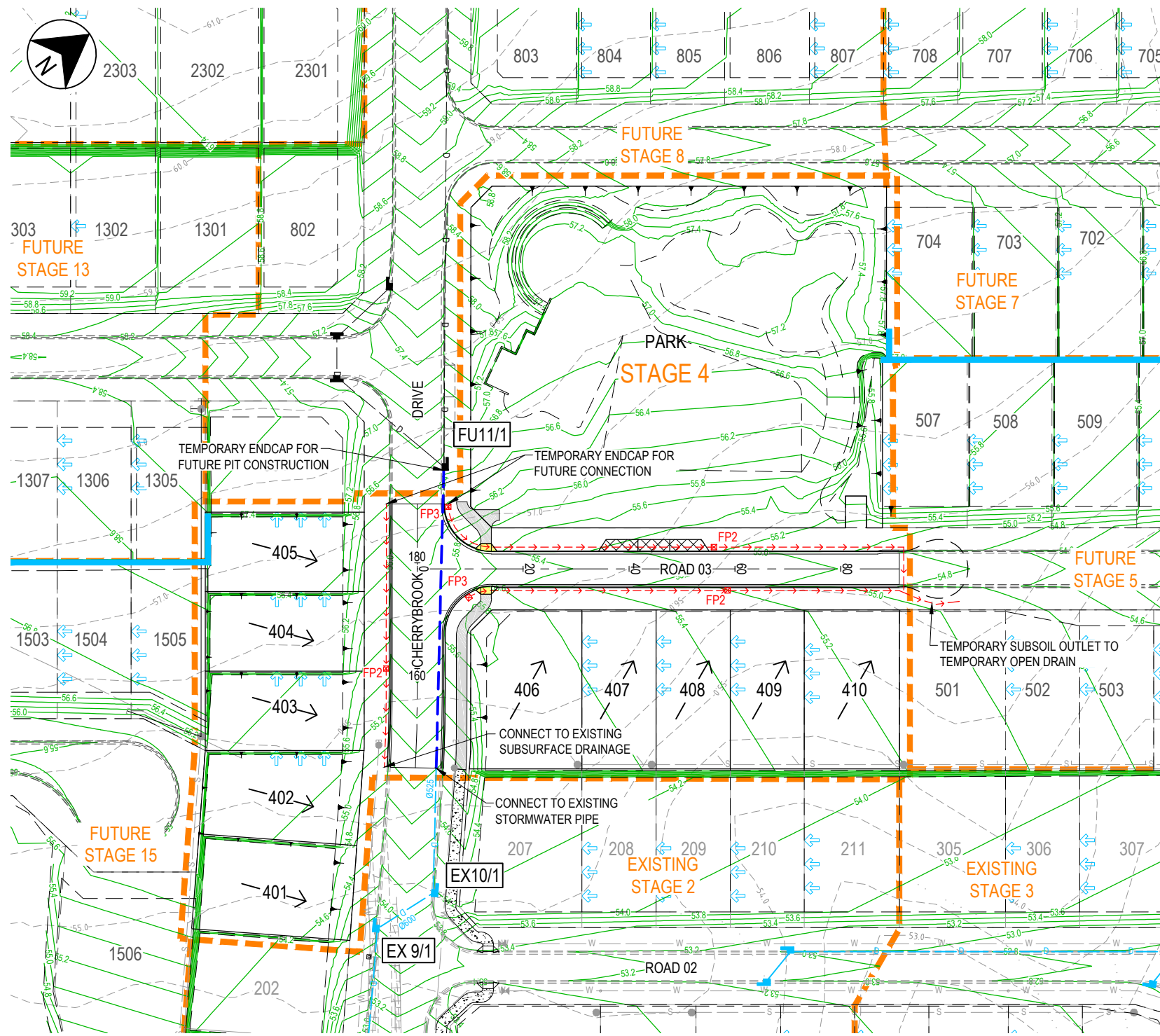
REV	DATE	DRAWN	REVD	APPD	REVISION	DRAWING NUMBER	REFERENCE DRAWING TITLE
C	09.10.18	PAM	RJC	DMc	PATHWAY REVISED		
B	22.06.17	PAM	RJC	DMc	TITLEBLOCK UPDATED		
A	26.05.17	JAH	RJC	DMc	INITIAL ISSUE		



ABN 57 001 024 095 and ACN 001 024 095  
 Jacobs Group (Australia) Pty Ltd  
 2 James Street  
 CAIRNS, QLD 4870  
 AUSTRALIA  
 Tel: +61 7 4031 4599  
 Fax: +61 7 4031 3967  
 Web: www.jacobs.com

CLIENT WALKER ROAD PTY LTD		TITLE INTERSECTION DETAILS	
PROJECT CHERRYBROOK - STAGE 4		SCALE 1:200 (A1)	
DRAWN JAH	DRAWING CHECK RJB	REVIEWED D.McEWAN	APPROVED <i>[Signature]</i>
DESIGNED PAM	DESIGN REVIEW RJC	DATE 26.05.17	DATE 09.10.18

SCALE 1:200 (A1)	DRAWING No. IHO35500-CI-DG-0407	REV C
---------------------	------------------------------------	----------



**NOTES**

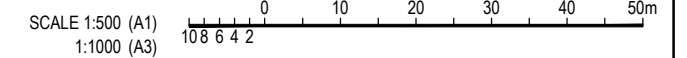
- FOR STANDARD STORMWATER DRAINAGE DETAILS REFER FNQROC STD. DRGS. S1045-S1100 INCLUSIVE.
- THE CONTRACTOR IS TO LOCATE ALL EXISTING SERVICES IN THE WORKS AREA PRIOR TO THE COMMENCEMENT OF CONSTRUCTION. FOR NOTES REGARDING EXISTING SERVICES REFER DRG. DG-0402.
- SUBSURFACE DRAINS TO BE CONSTRUCTED IN ACCORDANCE WITH STANDARD SPECIFICATION, FLUSHING POINTS IN ACCORDANCE WITH FNQROC STD. DRG. S1095.
- ALL STORMWATER PIPES ARE TO BE CLASS 2 FJ, RCP'S U.N.O.
- PRIOR TO COMMENCEMENT OF PIPEWORK, THE CONTRACTOR IS TO CONFIRM THE INVERT LEVEL OF DOWNSTREAM DRAINAGE TO ENSURE THE STORMWATER SYSTEM CAN DRAIN SATISFACTORILY. REFER ANY DISCREPANCY TO THE SUPERINTENDENT.
- CCTV INSPECTIONS ARE TO BE CONDUCTED FOR ALL STORMWATER PIPES FOR COUNCIL ASSESSMENT.

**LEGEND**

- 2/1 STRUCTURE No. / LINE NUMBER
- EX2/3 EXISTING STRUCTURE No.
- STORMWATER DRAINAGE PIPE & MANHOLE
- - - - - SUBSURFACE DRAINAGE
- PROPOSED SEWER
- ▲— FALL OF LOTS
- ▲— BATTER
- - - - - STAGE BOUNDARY
- DESIGN SURFACE CONTOURS (0.2m INTERVAL)
- - - - - EXISTING SURFACE CONTOURS (0.5m INTERVAL)
- EXISTING STORMWATER
- S— EXISTING SEWER
- W— EXISTING WATER
- ▲— BUILD TO BOUNDARY LINE

**FLUSHING POINT LEGEND**

- FP2 FLUSHING POINT IN LINE
- FP3 FLUSHING POINT HEAD



REV	DATE	DRAWN	REV'D	APP'D	REVISION
C	09.10.18	PAM	RJC	Dmc	EARTHWORKS REVISED IN PARK
B	22.06.17	PAM	RJC	Dmc	BUILD TO BOUNDARY LINE SHOWN, PADMOUNT LOCATION UPDATED
A	26.05.17	JAH	RJC	Dmc	INITIAL ISSUE

DRAWING NUMBER	REFERENCE DRAWING TITLE



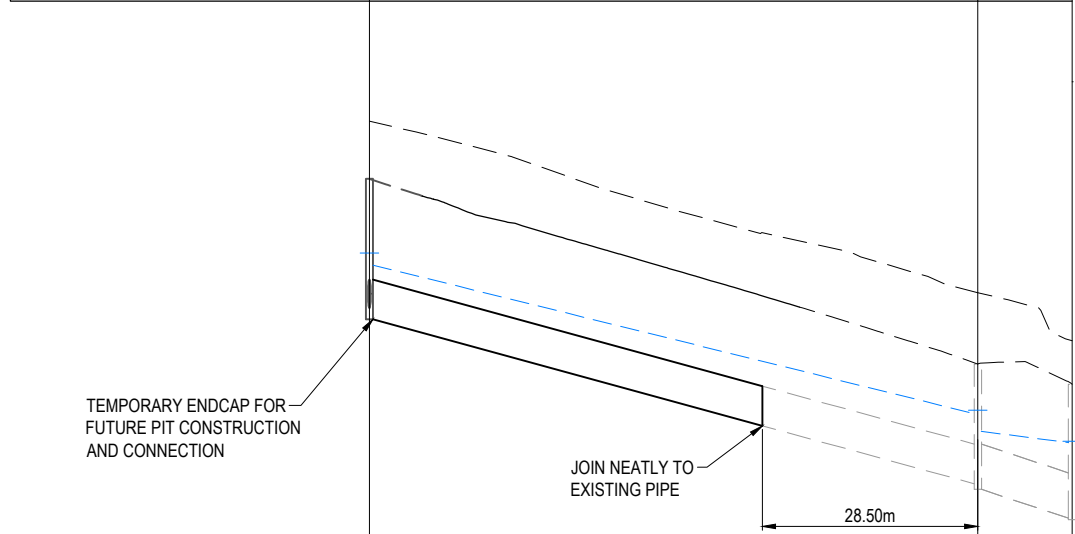
ABN 37 001 024 095 and ACN 001 024 095  
 Jacobs Group (Australia) Pty Ltd  
 2 James Street  
 CAIRNS, QLD 4870  
 AUSTRALIA  
 Tel: +61 7 4031 4599  
 Fax: +61 7 4031 3967  
 Web: www.jacobs.com

CLIENT WALKER ROAD PTY LTD		PROJECT CHERRYBROOK - STAGE 4	
DRAWN JAH	DRAWING CHECK RJB	REVIEWED D.McEWAN	APPROVED <i>[Signature]</i>
DESIGNED PAM	DESIGN REVIEW RJC	DATE 26.05.17	DATE 09.10.18

TITLE STORMWATER DRAINAGE	
SCALE 1:500 (A1)	DRAWING No. IH035500-CI-DG-0408
REV C	



STRUCTURE NAME	FU 11/1	EX 10/1	EX 9/1
STRUCTURE DESCRIPTION	ON-GRADE KERB INLET PIT; LINTEL TYPES	ON-GRADE KERB INLET PIT; LINTEL TYPES	ON-GRADE KERB INLET PIT; LINTEL TYPES



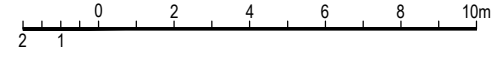
PIPE SIZE (mm)	525	600
PIPE CLASS	RCP (2)	RCP (2)
PIPE GRADE (%)	2.70%	3.06%
PIPE SLOPE (1 in X)	37.01	32.73
FULL PIPE VELOCITY (m/s)	3.11	2.37
PART FULL VELOCITY (m/s)	3.72	4.00

DATUM RL 49.0

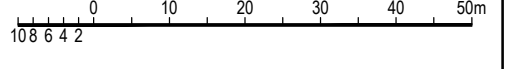
H.G.L IN PIPE & W.S.E IN STRUCTURE	55.518 55.518 55.359	53.395 53.441 53.160	53.012 53.029 52.992
PIPE FLOW (Cumecs)	0.672	0.670	
PIPE CAPACITY AT GRADE (Cumecs)	0.707	1.074	
DEPTH TO INVERT	1.838 1.858	1.583 1.658	1.771 1.791
INVERT LEVEL OF DRAIN	54.662 54.642	52.468 52.393	52.012 51.992
DESIGN SURFACE LEVEL	56.501	54.051	53.783
SETOUT COORDINATES	286.431 E 363199.740 N 8119066.065	366.902 E 363263.403 N 8119016.845	379.388 E 363262.591 N 8119004.385
CHAINAGE	80.471	12.486	

LINE

SCALE 1:100 (A1)  
1: 200 (A3)



SCALE 1:500 (A1)  
1:1000 (A3)



REV	DATE	DRAWN	REV'D	APP'D	REVISION	DRAWING NUMBER	REFERENCE DRAWING TITLE
B	09.10.18	PAM	RJC	DmC	RPEQ SIGNED		
A	22.06.17	PAM	RJC	DmC	TITLEBLOCK UPDATED		
A	26.05.17	JAH	RJC	DmC	INITIAL ISSUE		

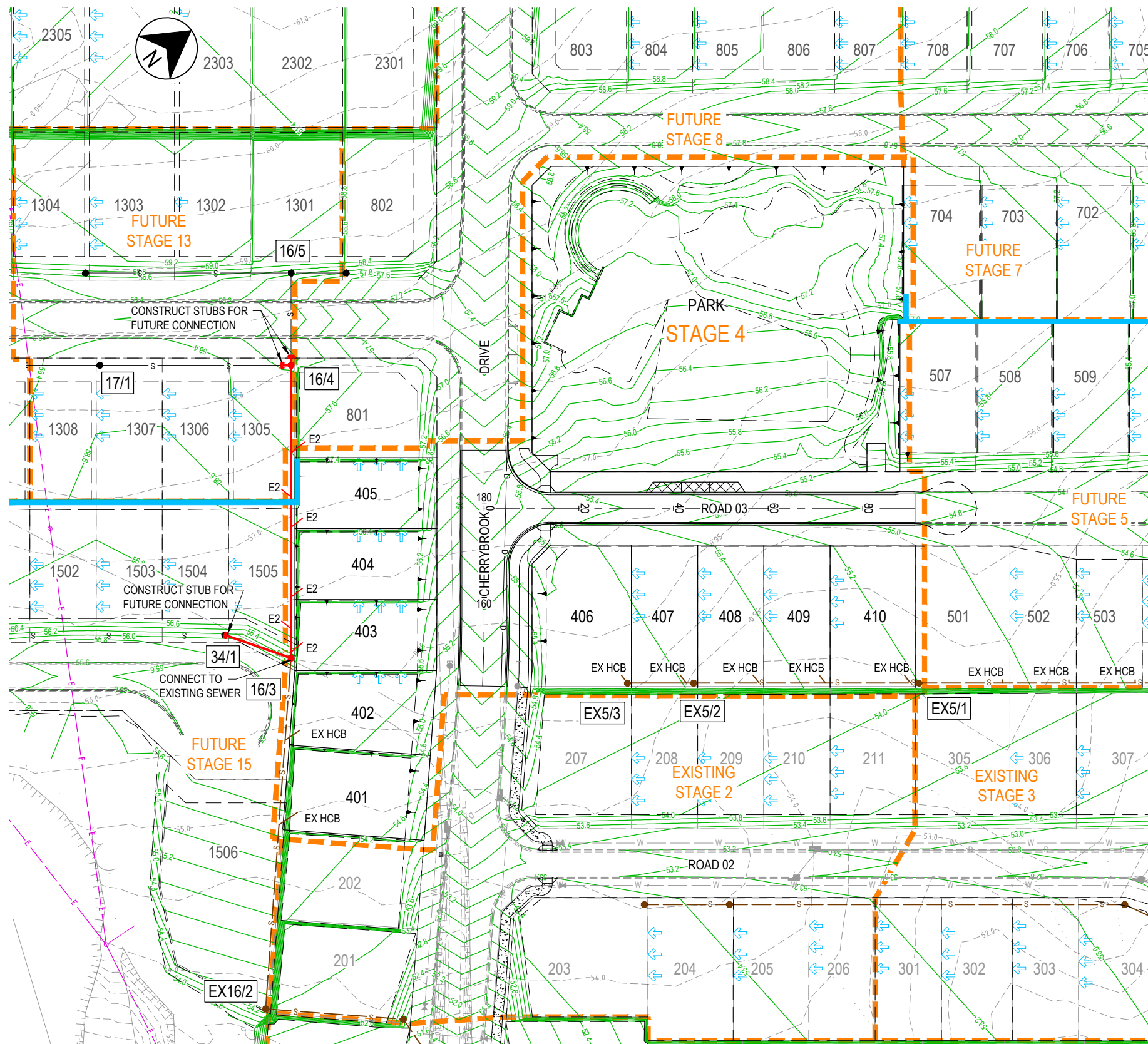
**JACOBS**

ABN 37 001 024 095 and ACN 001 024 095  
 Jacobs Group (Australia) Pty Ltd  
 2 James Street  
 CAIRNS, QLD 4870  
 AUSTRALIA

Tel: +61 7 4031 4599  
 Fax: +61 7 4031 3967  
 Web: www.jacobs.com

CLIENT	WALKER ROAD PTY LTD		
PROJECT	CHERRYBROOK - STAGE 4		
DRAWN	DRAWING CHECK	REVIEWED	APPROVED
JAH	RJB	D.McEWAN	
DESIGNED	DESIGN REVIEW	DATE	DATE
PAM	RJC	26.05.17	09.10.18

TITLE	STORMWATER DRAINAGE LONGITUDINAL SECTIONS		
SCALE	DRAWING No.	REV	
1:500H, 1:100V (A1)	IH035500-CI-DG-0409	C	

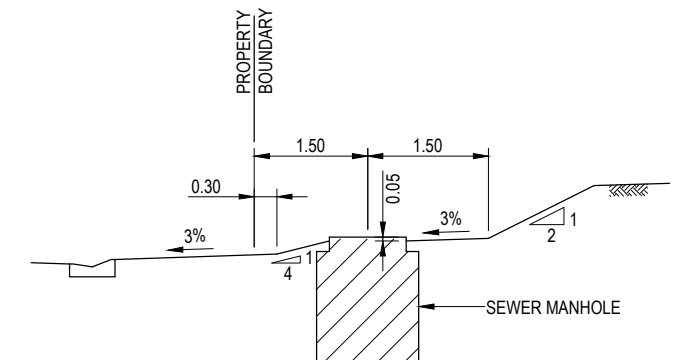


**NOTES**

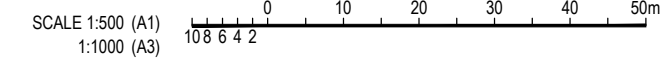
- ALL SEWER PIPES SHALL BE 150Ø uPVC CLASS 'S.N.8.' (U.N.O.).
- FOR STANDARD DETAILS OF SEWER MAINS, ETC. REFER FNQROC STD. DRGS. S3000 TO S3015 INCLUSIVE.
- MANHOLES ADJACENT ROAD BOUNDARIES SHALL BE ON A 1.5m ALIGNMENT U.N.O. MANHOLES ADJACENT SIDE AND REAR BOUNDARIES SHALL BE ON A 0.8m ALIGNMENT U.N.O.
- SEWER MANHOLES SHALL BE FINISHED 50mm MAX ABOVE FINISHED SURFACE LEVEL IN ALLOTMENTS AND FLUSH IN ROAD RESERVES.
- HOUSE DRAINS ARE TO EXTEND 1.5m CLEAR OF ANY EARTHWORKS BATTER THAT IS STEEPER THAN 1 ON 2.
- THE CONTRACTOR IS TO LOCATE ALL EXISTING SERVICES IN THE WORKS AREA PRIOR TO THE COMMENCEMENT OF CONSTRUCTION. FOR NOTES REGARDING EXISTING SERVICES REFER DRG. DG-0402.
- ALL WORKS TO BE IN ACCORDANCE WITH FNQROC DESIGN MANUAL SPECIFICATION S6.
- CONNECTION OF SEWER TO EXISTING MANHOLE SHALL BE IN ACCORDANCE WITH FNQROC'S REQUIREMENTS. CONNECTION TO MANHOLE TO BE MADE WITH SAND-SOCKETED PIPES (TO BE CONFIRMED WITH CAIRNS WATER PRIOR TO CONSTRUCTION).
- EXISTING LOTS TO BE REINSTATED AFTER CONSTRUCTION OF THE SEWER.
- ALL HOUSE CONNECTION BRANCHES ARE REQUIRED TO BE BROUGHT TO WITHIN A MAXIMUM OF 300mm OF THE FINISHED SURFACE LEVEL AND A GLUED CAP INSTALLED. THE RISER MUST BE CONNECTED TO A MARKER PEG WITH PLASTIC COATED WIRE. THE MARKER PEG IS TO BE OF HARDWOOD MATERIAL, PROTRUDING 20mm ABOVE THE GROUND AND SHALL BE INSTALLED IMMEDIATELY ADJACENT TO THE RISER IN ACCORDANCE WITH FNQROC DRAWING S3005.
- ALL VERTICAL DROPS SHALL BE CONSTRUCTED USING FIBREGLASS HEAVY DUTY DEEP SEWER DROPS.
- CONNECTIONS TO EXISTING COUNCIL MAINS TO BE MADE BY CAIRNS WATER.
- CCTV INSPECTIONS ARE TO BE CONDUCTED FOR ALL SEWERS FOR COUNCIL ASSESSMENT.

**LEGEND**

- 2/1 LINE NUMBER / STRUCTURE No.
- SEWER MAIN, MANHOLE AND ENDCAP
- HOUSE CONNECTION BRANCH / TYPE
- PROPOSED STORMWATER
- BATTER
- STAGE BOUNDARY
- DESIGN SURFACE CONTOURS (0.2m INTERVAL)
- EXISTING SURFACE CONTOURS (0.5m INTERVAL)
- EXISTING STORMWATER
- EXISTING SEWER
- EXISTING WATER
- BUILD TO BOUNDARY LINE



TYPICAL SEWER MANHOLE IN BATTER ARRANGEMENT  
N.T.S.



REV	DATE	DRAWN	REV'D	APP'D	REVISION
D	09.10.18	PAM	RJC	DMc	EARTHWORKS REVISED IN PARK
C	24.07.17	PAM	RJC	DMc	LEVELS UPDATED TO SUIT ST13-15
B	22.06.17	PAM	RJC	DMc	BUILD TO BOUNDARY LINE SHOWN, PADMOUNT LOCATION UPDATED
A	26.05.17	JAH	RJC	DMc	INITIAL ISSUE

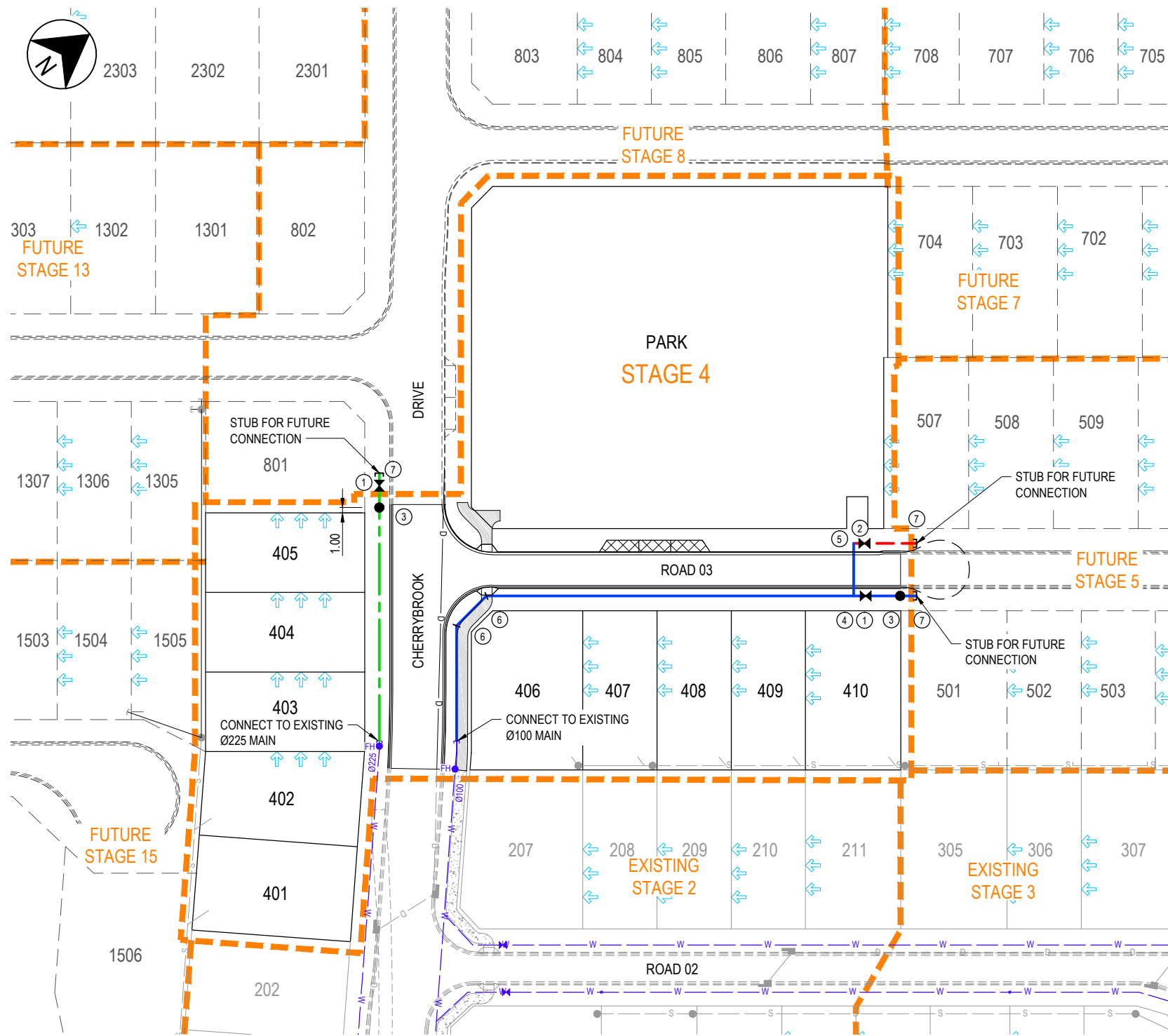
ABN 37 001 024 095 and ACN 001 024 095  
 Jacobs Group (Australia) Pty Ltd  
 2 James Street  
 CAIRNS, QLD 4870  
 AUSTRALIA

Tel: +61 7 4031 4599  
 Fax: +61 7 4031 3967  
 Web: www.jacobs.com

CLIENT WALKER ROAD PTY LTD		TITLE SEWERAGE	
PROJECT CHERRYBROOK - STAGE 4		DRAWING No. IH035500-CI-DG-0410	
DRAWN JAH	DRAWING CHECK RJB	REVIEWED D.McEWAN	APPROVED 
DESIGNED PAM	DESIGN REVIEW RJC	DATE 26.05.17	DATE 09.10.18

SCALE 1:500 (A1)	REV D
---------------------	----------





**WATER SUPPLY PIPE AND FITTINGS LIST**

REF.	CODE	DESCRIPTION
①		SLUICE VALVE CLASS '14' COMPLETE WITH C.I. COVER BOX, CONCRETE MARGIN AND MARKER
②		50 BRONZE GATE VALVE COMPLETE WITH C.I. COVER BOX, CONCRETE MARGIN AND MARKER
③		80 SPRING HYDRANT COMPLETE WITH RISER, TEE, C.I. COVER BOX, CONCRETE MARGIN AND MARKER
④		TEE WITH CONCRETE THRUST BLOCK
⑤		SERVICE MAIN CONNECTION
⑥		BEND TO SUIT WITH CONCRETE THRUST BLOCK
⑦		DEAD END CAP WITH CONCRETE THRUST BLOCK
		225 uPVC WATER MAIN CLASS '16' RUBBER RING JOINTED
		100 uPVC WATER MAIN CLASS '16' RUBBER RING JOINTED
		63 OD PE 100 PN 16 SERVICE MAIN

**NOTES**

- ALL WATER MAINS ARE ON 2.8m ALIGNMENTS FROM R.P. BOUNDARY U.N.O.
- FOR STANDARD DETAILS REFER FNQROC. STD. DRGS. S2000 TO S2035 INCLUSIVE.
- CONNECTIONS TO EXISTING COUNCIL MAINS TO BE MADE BY CAIRNS WATER.
- THE CONTRACTOR IS TO LOCATE ALL EXISTING SERVICES IN THE WORKS AREA PRIOR TO COMMENCEMENT OF CONSTRUCTION. REFER DRG. DG-0402 FOR NOTES REGARDING EXISTING SERVICES.
- ALL WORKS TO BE IN ACCORDANCE WITH FNQROC DESIGN MANUAL SPECIFICATION S5.

**LEGEND**

- STAGE BOUNDARY
- EXISTING WATER
- PROPOSED STORMWATER
- PROPOSED SEWER
- EXISTING STORMWATER
- EXISTING SEWER
- BUILD TO BOUNDARY LINE

SCALE 1:500 (A1)  
 1:1000 (A3)

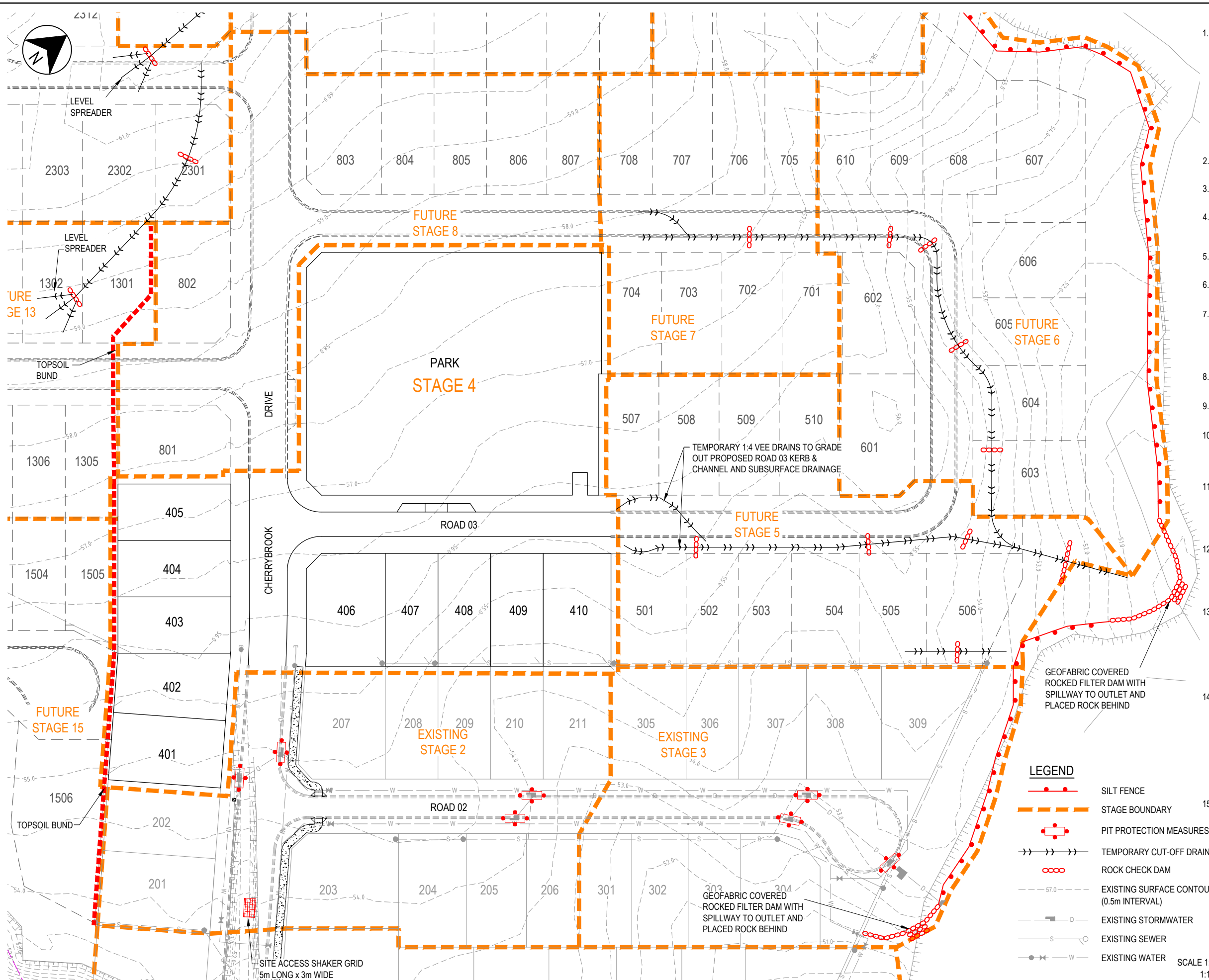
REV	DATE	DRAWN	REV'D	APP'D	REVISION
C	09.10.18	PAM	RJC	Dmc	PATHWAY REVISED
B	22.06.17	PAM	RJC	Dmc	BUILD TO BOUNDARY LINE SHOWN, PADMOUNT LOCATION UPDATED
A	26.05.17	JAH	RJC	Dmc	INITIAL ISSUE

ASB 37 001 024 095 and ACN 001 024 095  
 Jacobs Group (Australia) Pty Ltd  
 2 James Street  
 CAIRNS, QLD 4870  
 AUSTRALIA

Tel: +61 7 4031 4599  
 Fax: +61 7 4031 3967  
 Web: www.jacobs.com

CLIENT WALKER ROAD PTY LTD		TITLE WATER RETICULATION	
PROJECT CHERRYBROOK - STAGE 4		DRAWING No. IH035500-CI-DG-0412	
DRAWN JAH	DRAWING CHECK RJB	REVIEWED D.McEWAN	APPROVED 
DESIGNED PAM	DESIGN REVIEW RJC	DATE 26.05.17	DATE 09.10.18

SCALE 1:500 (A1)	DRAWING No. IH035500-CI-DG-0412	REV C
---------------------	------------------------------------	----------



- ### NOTES
- SEQUENCING OF CONTROL MEASURES
    - INSTALL STABLE POINT OF ENTRY
    - INSTALL SILT FENCES
    - PROTECT TOPSOIL STOCKPILES
    - CONSTRUCT TEMPORARY SEDIMENT BASINS
    - INSTALL STORMWATER PIPES
    - IMPLEMENT PROTECTION MEASURES TO STORMWATER PITS
    - REVEGETATE BARE AREAS UPON COMPLETION OF EARTHWORKS
    - THE SEDIMENT CONTROL STRUCTURES ARE TO BE CLEANED & MAINTAINED AFTER EVERY STORM EVENT. ERODED SOILS SHALL BE STOCKPILED AS DIRECTED.
  - THE AMOUNT OF DISTURBANCE TO EXISTING VEGETATION BE KEPT TO A MINIMUM.
  - EXACT LOCATION OF SEDIMENT CONTROL STRUCTURES TO BE DETERMINED ON SITE BY COUNCIL & SUPERINTENDENT.
  - STOCKPILE LOCATIONS TO BE AGREED WITH COUNCIL & THE SUPERINTENDENT. STOCKPILES TO BE PROTECTED VIA DIVERSION DRAIN ON THE UPSLOPE & SILT FENCE ON THE DOWNSLOPE.
  - STORMWATER PIPES TO HAVE PIT PROTECTION MEASURES AS DETAILED IN FNQROC DEVELOPMENT MANUAL.
  - ALL SEDIMENT CONTROL MEASURES TO BE IN ACCORDANCE WITH THE CONTRACTORS ESC PLAN.
  - THE FOLLOWING REVEGETATION MEASURES ARE TO BE UNDERTAKEN IMMEDIATELY UPON COMPLETION OF EARTHWORKS.
    - CUT & FILL BATTERS STEEPER THAN 1 ON 4 TO BE HYDROMULCHED.
    - VERGES & ALLOTMENTS TO BE GRASS SEEDED.
    - PLACE TURF STRIPS BEHIND ALL KERB LINES.
  - REVEGETATION IS TO BE WATERED & MAINTAINED UNTIL GROWTH IS ESTABLISHED.
  - CONTRACTOR TO PROVIDE DUST SUPPRESSION MEASURES AS REQUIRED.
  - CONTRACTOR MUST IMPLEMENT A SUITABLE DUST MANAGEMENT STRATEGY TO MINIMISE DUST NUISANCE ON ADJACENT PROPERTIES. DETAILS OF THE DUST MANAGEMENT STRATEGY TO BE INCORPORATED INTO EROSION AND SEDIMENT CONTROL STRATEGY.
  - UPON COMPLETION OF EARTHWORKS AND PRIOR TO WORKS ACCEPTANCE, ALL EXPOSED SURFACES ARE TO BE TREATED (I.E. DRILL SEEDING, HYDROMULCHING) TO PREVENT EROSION. TEMPORARY EROSION AND SEDIMENT CONTROL MEASURES MUST REMAIN IN PLACE DURING CONSTRUCTION UNTIL THE SITE IS STABILISED.
  - ALL REASONABLE AND PRACTICAL MEASURES MUST BE TAKEN TO PREVENT POLLUTION TO THE EXISTING CREEK, WATER WAYS OR DRAINAGE LINES. WASTE WATER FROM CLEANING OF EQUIPMENT MUST NOT BE DISCHARGED TO ANY WATERCOURSE, STORMWATER SYSTEM OR PRIVATE PROPERTIES.
  - SEDIMENT BASIN
    - INLET PROTECTION TO MINIMISE SCOUR & EVENLY DISTRIBUTE FLOW THROUGH BASIN.
    - A MARKER PEG SHOULD BE INSTALLED TO SHOW THE STORAGE DEPTH. SEDIMENT SHALL BE REMOVED FROM BASIN WHEN 30% STORAGE DEPTH IS ENCLOSED & APPROPRIATELY DISPOSED ON SITE BY RESPREADING IN AREAS OF NON-EROSIVE FLOWS.
  - WATER QUALITY MONITORING SHOULD BE UNDERTAKEN DURING SIGNIFICANT RAINFALL EVENTS. MONITORING SHOULD INVOLVE MEASUREMENT OF TURBIDITY. TURBIDITY AT A POINT 50m BELOW THE LAST SITE DISCHARGE LOCATION SHOULD BE NO MORE THAN 10% ABOVE THAT AT A POINT IMMEDIATELY ABOVE THE SITE, AS MEASURED BY A TURBIDITY METER OR TURBIDITY TUBE. IF THIS IS EXCEEDED A SAMPLE AT EACH LOCATION SHOULD BE TAKEN AND ANALYSED FOR TOTAL SUSPENDED SOLIDS (TSS). DOWNSTREAM TSS SHOULD NOT EXCEED UPSTREAM TSS PLUS 10%.
  - DESIGN CRITERIA FOR CONTRACTOR'S EROSION & SEDIMENT CONTROL PLAN TO BE IN ACCORDANCE WITH SECTION CP1.05 OF THE FNQROC DEVELOPMENT MANUAL.

### LEGEND

- SILT FENCE
- STAGE BOUNDARY
- PIT PROTECTION MEASURES
- TEMPORARY CUT-OFF DRAIN
- ROCK CHECK DAM
- EXISTING SURFACE CONTOURS (0.5m INTERVAL)
- EXISTING STORMWATER
- EXISTING SEWER
- EXISTING WATER

THIS EROSION AND SEDIMENT CONTROL STRATEGY IS DESIGNED ON THE BASIS THAT EARTHWORKS FOR STAGES 2, 3 & 4 ARE CONSTRUCTED CONCURRENTLY

SCALE 1:500 (A1)  
 1:1000 (A3)  
 0 10 20 30 40 50m  
 108 6 4 2

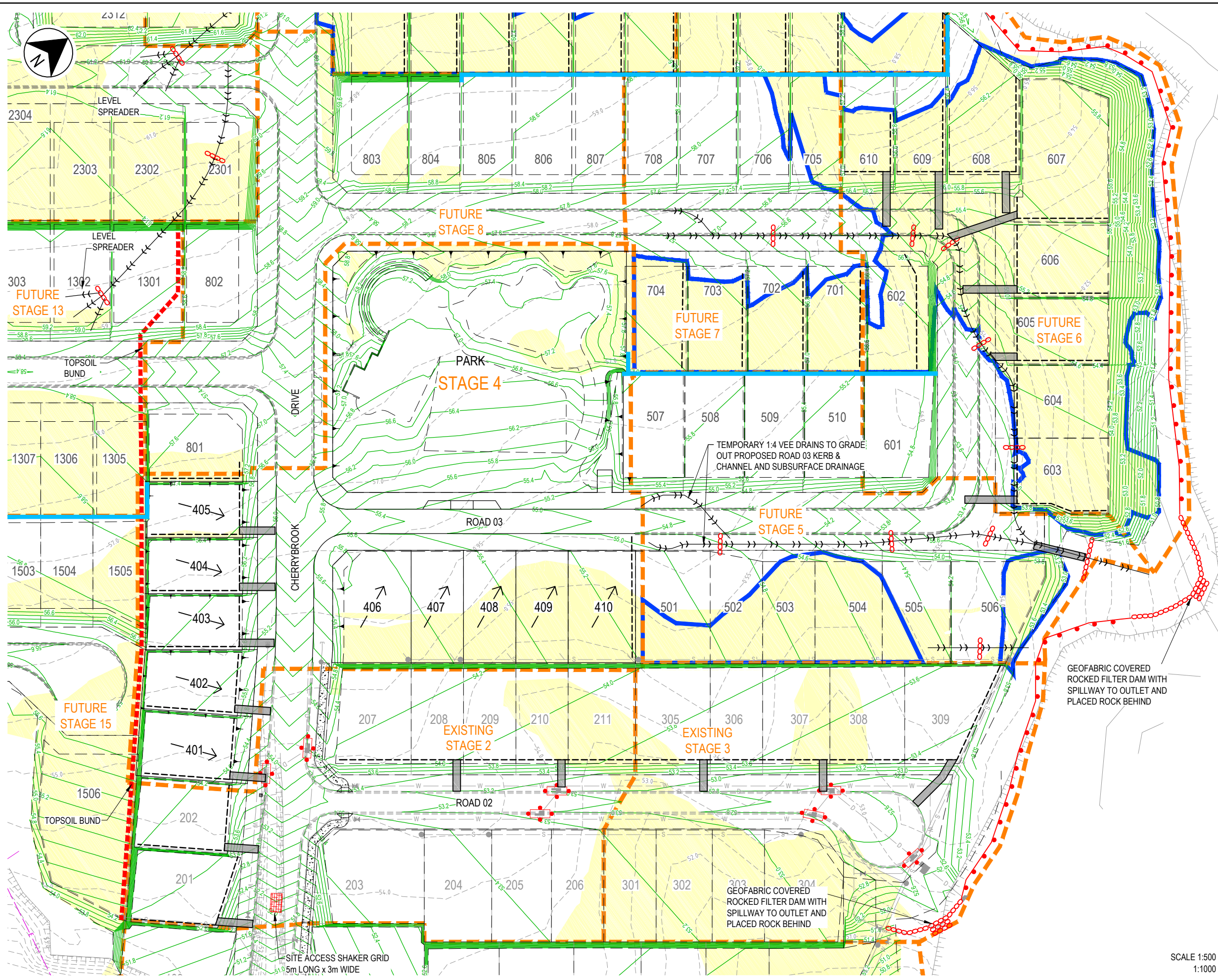
REV	DATE	DRAWN	REV'D	APP'D	REVISION
C	09.10.18	PAM	RJC	DMc	RPEQ SIGNED
B	22.06.17	PAM	RJC	DMc	PADMOUNT LOCATION UPDATED
A	26.05.17	JAH	RJC	DMc	INITIAL ISSUE

ABN 57 001 024 095 and ACN 001 024 095  
 Jacobs Group (Australia) Pty Ltd  
 2 James Street  
 CAIRNS, QLD 4870  
 AUSTRALIA

Tel: +61 7 4031 4599  
 Fax: +61 7 4031 3967  
 Web: www.jacobs.com

CLIENT	WALKER ROAD PTY LTD		
PROJECT	CHERRYBROOK - STAGE 4		
DRAWN	DRAWING CHECK	REVIEWED	APPROVED
JAH	RJB	D.McEWAN	
DESIGNED	DESIGN REVIEW	DATE	DATE
PAM	RJC	26.05.17	09.10.18

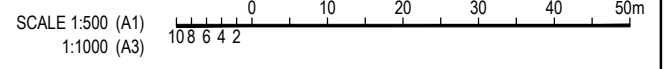
TITLE		EROSION AND SEDIMENT CONTROL STRATEGY
		PHASE 1 - TOPSOIL STRIPPING
SCALE	DRAWING No.	REV
1:500 (A1)	IH035500-CI-DG-0413	C



**LEGEND**

- SILT FENCE
- FALL OF LOTS
- VISQUEEN LINED BATTER CHUTE
- PIT PROTECTION MEASURES
- BATTER
- STAGE BOUNDARY
- TEMPORARY CUT-OFF DRAIN
- DESIGN SURFACE CONTOURS (0.2m INTERVAL)
- ROCK CHECK DAM
- BATTER BUND
- EXISTING SURFACE CONTOURS (0.5m INTERVAL)
- EXISTING STORMWATER
- EXISTING SEWER
- EXISTING WATER
- AREAS FOR SPOIL

**NOTES**  
 1. FOR NOTES, REFER DRG. DG-0413.



REV	DATE	DRAWN	REV'D	APP'D	REVISION
C	09.10.18	PAM	RJC	Dmc	EARTHWORKS REVISED IN PARK
B	22.06.17	PAM	RJC	Dmc	PADMOUNT LOCATION UPDATED
A	26.05.17	JAH	RJC	Dmc	INITIAL ISSUE

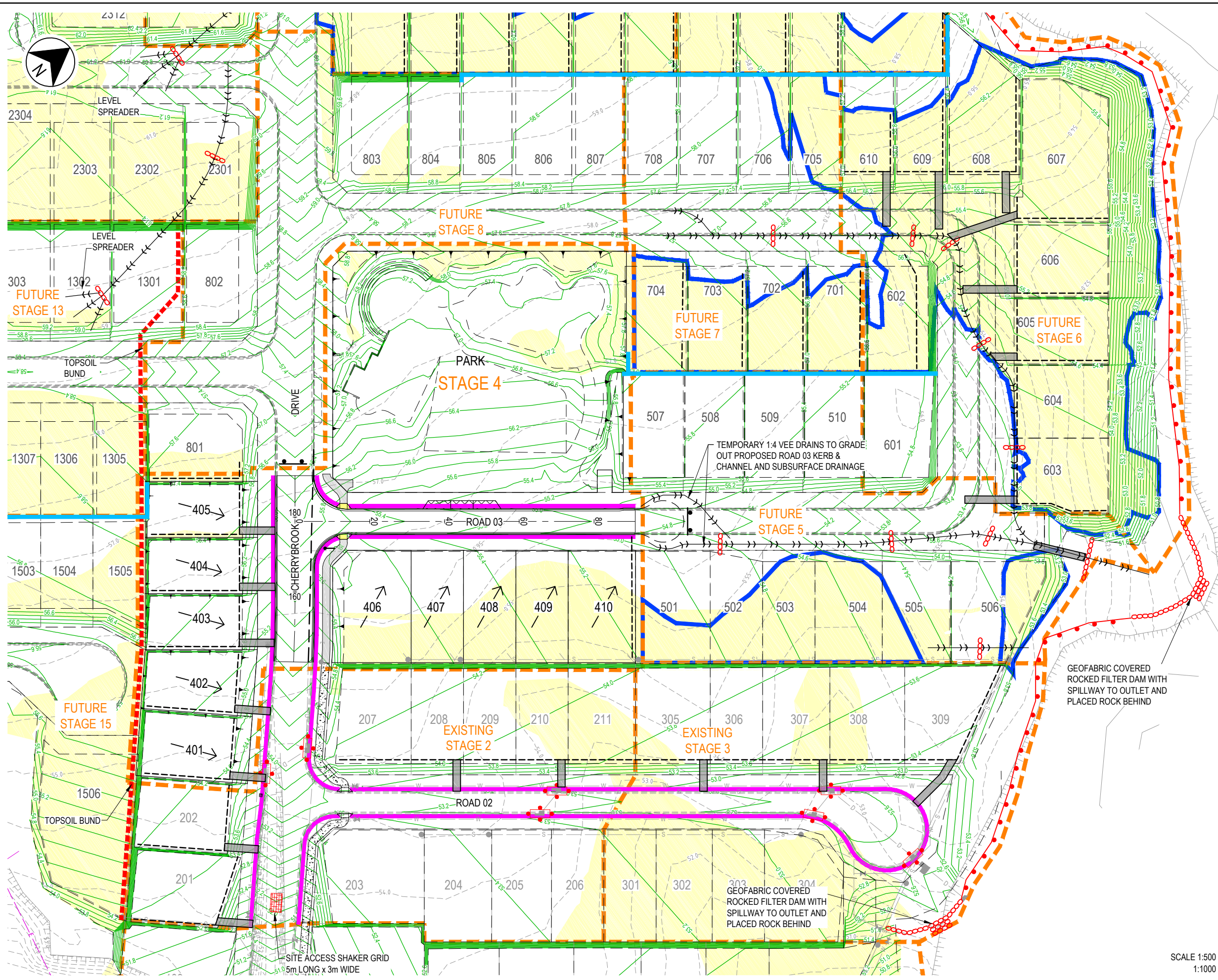
**JACOBS**

ABN 57 001 024 095 and ACN 001 024 095  
 Jacobs Group (Australia) Pty Ltd  
 2 James Street  
 CAIRNS, QLD 4870  
 AUSTRALIA

Tel: +61 7 4031 4599  
 Fax: +61 7 4031 3967  
 Web: www.jacobs.com

CLIENT WALKER ROAD PTY LTD	DRAWN JAH	DRAWING CHECK RJB	REVIEWED D.McEWAN	APPROVED <i>[Signature]</i>
PROJECT CHERRYBROOK - STAGE 4	DESIGNED PAM	DESIGN REVIEW RJC	DATE 26.05.17	DATE 09.10.18

TITLE EROSION AND SEDIMENT CONTROL STRATEGY PHASE 2 - EARTHWORKS	
SCALE 1:500 (A1)	DRAWING No. IHO35500-CI-DG-0414
REV C	



**LEGEND**

- SILT FENCE
- STORMWATER DRAINAGE PIPE
- FALL OF LOTS
- VISQUEEN LINED BATTER CHUTE
- PIT PROTECTION MEASURES
- BATTER
- STAGE BOUNDARY
- TEMPORARY CUT-OFF DRAIN
- DESIGN SURFACE CONTOURS (0.2m INTERVAL)
- ROCK CHECK DAM
- BATTER BUND
- TURF STRIPS
- AREA FOR SPOIL PLACEMENT
- EXISTING SURFACE CONTOURS (0.5m INTERVAL)
- EXISTING STORMWATER
- EXISTING SEWER
- EXISTING WATER
- AREAS FOR SPOIL

**NOTES**  
 1. FOR NOTES, REFER DRG. DG-0413.

GEOFABRIC COVERED ROCKED FILTER DAM WITH SPILLWAY TO OUTLET AND PLACED ROCK BEHIND

GEOFABRIC COVERED ROCKED FILTER DAM WITH SPILLWAY TO OUTLET AND PLACED ROCK BEHIND

TEMPORARY 1:4 VEE DRAINS TO GRADE OUT PROPOSED ROAD 03 KERB & CHANNEL AND SUBSURFACE DRAINAGE

SITE ACCESS SHAKER GRID  
 5m LONG x 3m WIDE

SCALE 1:500 (A1)  
 1:1000 (A3)  
 0 10 20 30 40 50m  
 108 6 4 2

REV	DATE	DRAWN	REV'D	APP'D	REVISION
C	09.10.18	PAM	RJC	Dmc	EARTHWORKS REVISED IN PARK
B	22.06.17	PAM	RJC	Dmc	PADMOUNT LOCATION UPDATED
A	26.05.17	JAH	RJC	Dmc	INITIAL ISSUE

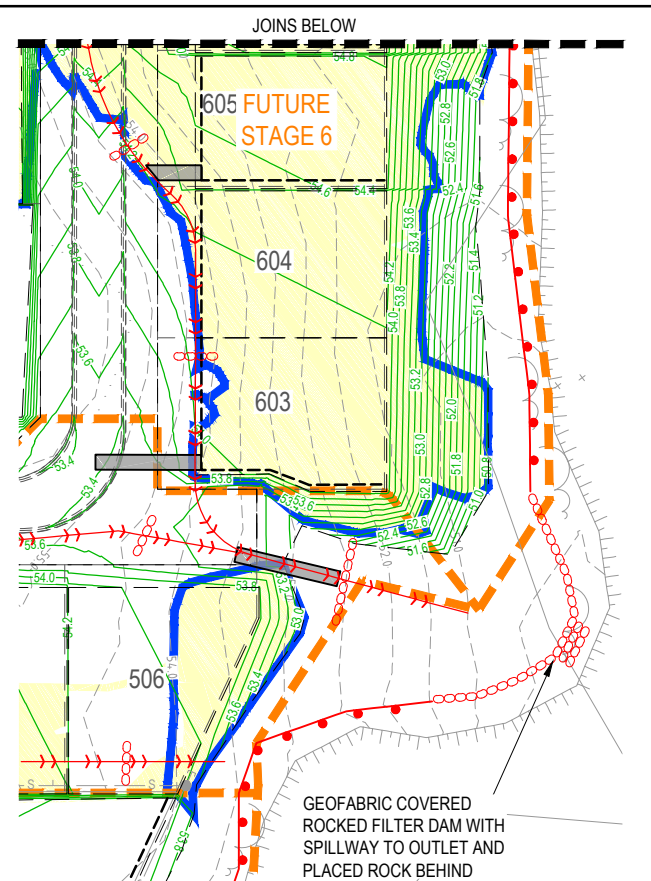
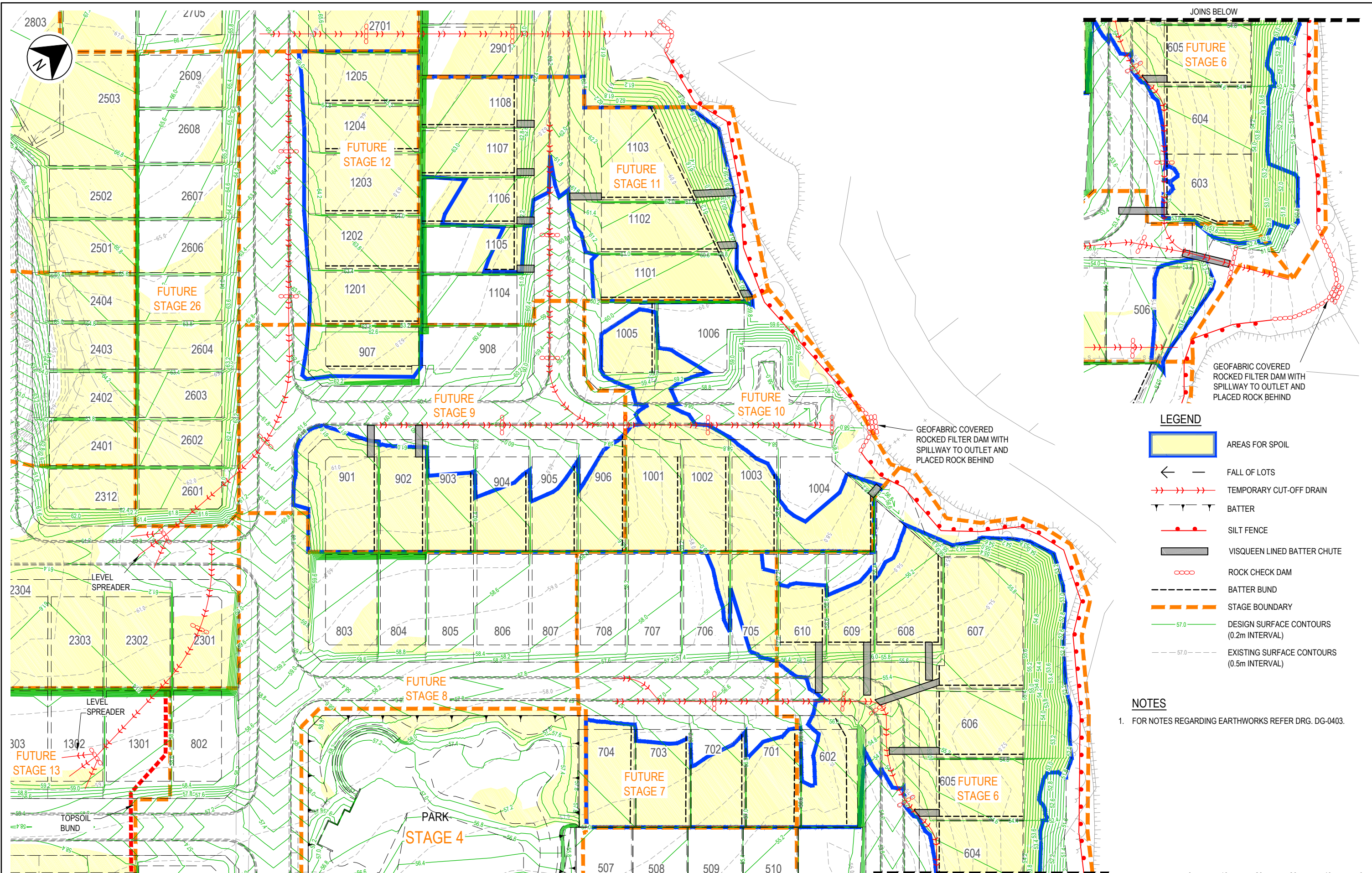
**JACOBS**

ABN 57 001 024 095 and ACN 001 024 095  
 Jacobs Group (Australia) Pty Ltd  
 2 James Street  
 CAIRNS, QLD 4870  
 AUSTRALIA

Tel: +61 7 4031 4599  
 Fax: +61 7 4031 3967  
 Web: www.jacobs.com

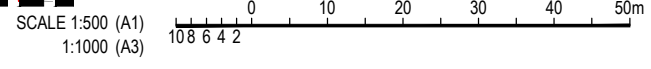
CLIENT	WALKER ROAD PTY LTD
PROJECT	CHERRYBROOK - STAGE 4
DRAWN	JAH
DESIGNED	PAM
DRAWING CHECK	RJB
DESIGN REVIEW	RJC
REVIEWED	D.McEWAN
DATE	26.05.17
APPROVED	
DATE	09.10.18

TITLE	EROSION AND SEDIMENT CONTROL STRATEGY PHASE 3 - ROADWORKS
SCALE	1:500 (A1)
DRAWING No.	IH035500-CI-DG-0415
REV	C



- LEGEND**
- AREAS FOR SPOIL
  - FALL OF LOTS
  - TEMPORARY CUT-OFF DRAIN
  - BATTER
  - SILT FENCE
  - VISQUEEN LINED BATTER CHUTE
  - ROCK CHECK DAM
  - BATTER BUND
  - STAGE BOUNDARY
  - DESIGN SURFACE CONTOURS (0.2m INTERVAL)
  - EXISTING SURFACE CONTOURS (0.5m INTERVAL)

**NOTES**  
 1. FOR NOTES REGARDING EARTHWORKS REFER DRG. DG-0403.



REV	DATE	DRAWN	REV'D	APP'D	REVISION
D	09.10.18	PAM	RJC	DMc	EARTHWORKS REVISED IN PARK
C	11.09.18	JP	RJC	DMc	AREAS FOR SPOIL UPDATED
B	22.06.17	PAM	RJC	DMc	PADMOUNT LOCATION UPDATED
A	26.05.17	JAH	RJC	DMc	INITIAL ISSUE

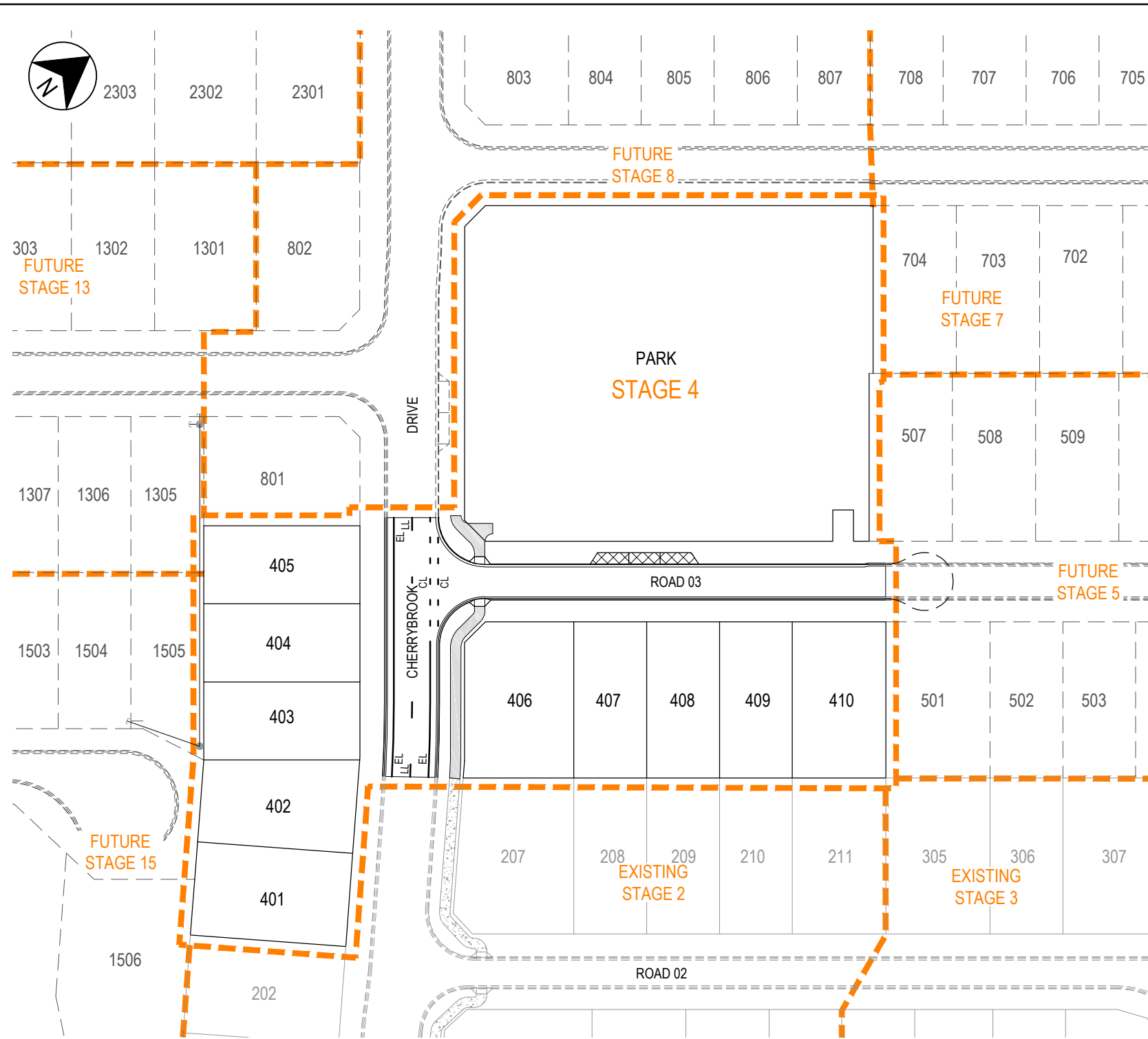
ABN 92 001 024 095 and ACN 001 024 095  
 Jacobs Group (Australia) Pty Ltd  
 2 James Street  
 CAIRNS, QLD 4870  
 AUSTRALIA

Tel: +61 7 4031 4599  
 Fax: +61 7 4031 3967  
 Web: www.jacobs.com

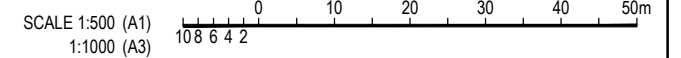
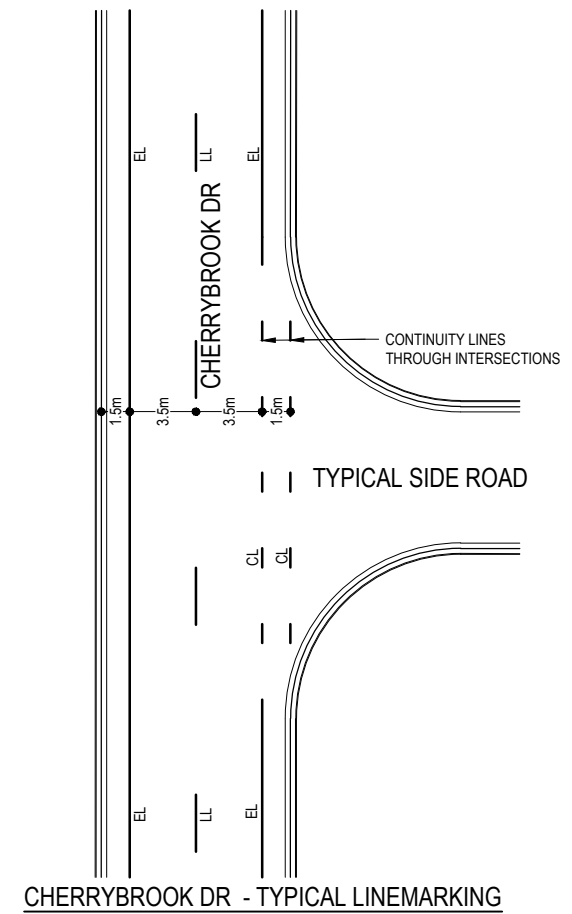
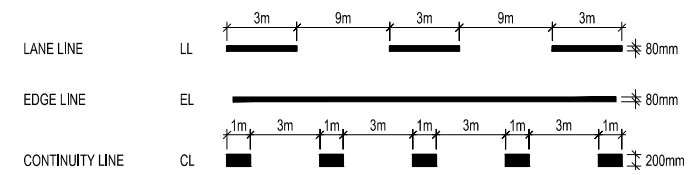
CLIENT	WALKER ROAD PTY LTD		
PROJECT	CHERRYBROOK - STAGE 4		
DRAWN	DRAWING CHECK	REVIEWED	APPROVED
JAH	RJB	D.McEWAN	
DESIGNED	DESIGN REVIEW	DATE	DATE
PAM	RJC	26.05.17	09.10.18

TITLE		EARTHWORKS SPOIL PLAN	
SCALE	DRAWING No.	REV	
1:500 (A1)	IH035500-CI-DG-0416	D	





LEGEND FOR PAVEMENT MARKING



REV	DATE	DRAWN	REV'D	APP'D	REVISION	DRAWING NUMBER	REFERENCE DRAWING TITLE
C	09.10.18	PAM	RJC	DMc	PATHWAY REVISED		
B	22.06.17	PAM	RJC	DMc	TITLEBLOCK UPDATED		
A	21.06.17	JAH	RJC	DMc	INITIAL ISSUE		

**JACOBS**

ABN 37 001 024 095 and ACN 001 024 095  
 Jacobs Group (Australia) Pty Ltd  
 2 James Street  
 CAIRNS, QLD 4870  
 AUSTRALIA

Tel: +61 7 4031 4599  
 Fax: +61 7 4031 3967  
 Web: www.jacobs.com

CLIENT WALKER ROAD PTY LTD			
PROJECT CHERRYBROOK - STAGE 4			
DRAWN JAH	DRAWING CHECK RJB	REVIEWED D.McEWAN	APPROVED [Signature]
DESIGNED PAM	DESIGN REVIEW RJC	DATE 21.06.17	DATE 09.10.18

TITLE LINEMARKING PLAN		REV C
SCALE 1:500 (A1)	DRAWING No. IH035500-CI-DG-0417	

