

**SINGLE  
STOREY**

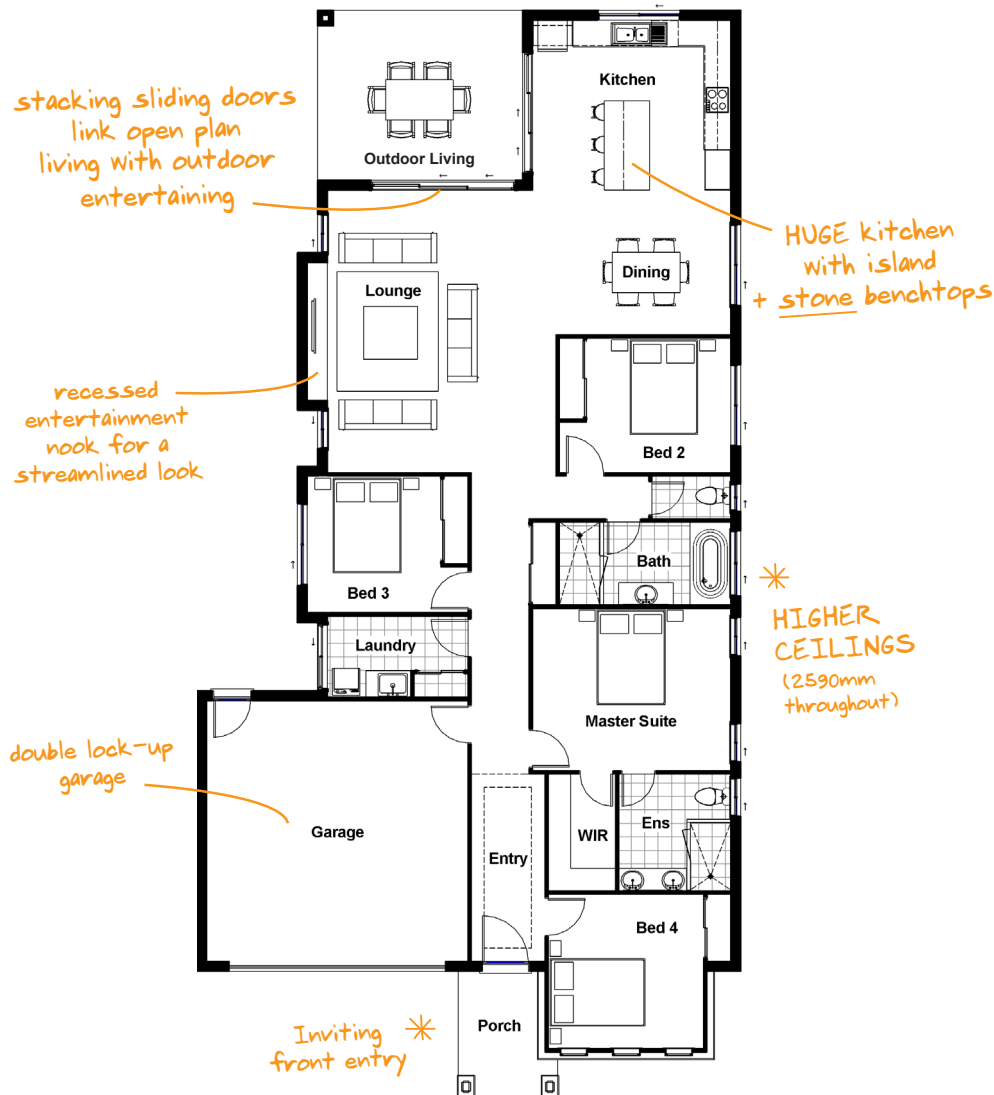


# LONGLEY 25 MODERN

🛏️ 4   🛁 2   🚗 2

With a roomy fourth bedroom and a huge chef's kitchen, this home is a larger version of the Longley 23.

# LONGLEY 25 MODERN



#### HOME DIMENSIONS

Master Suite	4.4 x 3.6m
Bedroom 2	3.2 x 3.0m
Bedroom 3	3.0 x 3.0m
Bedroom 4	3.5 x 3.4m
Lounge	5.1 x 6.3m
Dining	3.9 x 3.2m
Outdoor Living	4.5 x 3.8m
Garage	5.8 x 5.8m

House length	24.4m
House width	12.1m
Min. frontage required	13.5m

#### TOTAL FLOOR AREA

(incl. outdoor living)	233.5m <sup>2</sup>
------------------------	---------------------

## EXTRA FEATURES NO EXTRA COST

- ▶ Higher ceilings throughout (2590mm)
- ▶ Roller blinds to all windows (excluding garage)
- ▶ Caesarstone kitchen bench tops
- ▶ Reverse cycle split system air conditioner to living area
- ▶ Floor coverings throughout (ceramic tiles to living, kitchen and wet areas and carpet to bedrooms)
- ▶ Ceramic tiles to outdoor living
- ▶ Colorbond roof or flat profile roof tile
- ▶ 100mm recessed LED downlights
- ▶ Flyscreens to all opening windows and sliding glass doors
- ▶ 900mm stainless steel kitchen appliances
- ▶ Automatic Colorbond panel lift garage door
- ▶ Stainless steel ceiling fans to living, bedrooms and alfresco
- ▶ 400 Series Hills Home Hub
- ▶ Epoxy floor finish to garage floor

For our full list of inclusions and specifications, talk to a Home Coach or visit [www.drhomes.com.au](http://www.drhomes.com.au)

Talk to a Home Coach today. Call **07 3801 1328** or visit [www.DRHomes.com.au](http://www.DRHomes.com.au)