

**ADDITIONAL NOTES:**

The LOT dimensions and area shown hereon are subject to final field survey and also to the requirements of Council and any other authority which may have requirements under any relevant legislation

Final surface contours shown hereon have been drawn from data supplied by Sheehy & Partners Pty Ltd.

Depth of fill values shown are calculated from the lower of the pre-development surface or the temporary basin surface.

Compaction of any fill material placed on this site shall be completed to level one inspection and testing services in accordance with AS3798-2007.

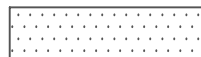
Copyright © Veris Australia Pty Ltd 1/11/2018.

**LEGEND**

Final surface contours based on A.H.D. datum at an interval of 0.25m, shown as: 21.75

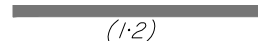
Final surface level shown as:- +20.62

Where applicable, areas to be filled from the pre-development surface or the temporary basin surface are shown as:-



Depth of fill, in metres, shown as:- +1.9

Retaining wall and retaining wall height, shown on the lower side of the wall, have been drawn from plans supplied by Sheehy & Partners shown as:



**RIVERPARKS  
STAGE 8B3**  
For  
**NORTHERLY PROJECTS PTY LTD**

**IMPORTANT NOTES:**  
(These notes are an integral part of this plan)  
This plan has been prepared for **NORTHERLY PROJECTS PTY LTD** for the purposes of **A Disclosure Plan Under the Land Sales Act 1984 (as amended)**.  
It is not to be used by any other person or corporation or for any other purposes and is subject to the following limitations:

Please refer to the approved Development Application for conditions relating to the LOT and to approved Operational Works drawings for services location and possible easements.

THESE DESIGNS AND DRAWINGS ARE COPYRIGHT AND ARE NOT TO BE USED OR REPRODUCED WITHOUT THE WRITTEN PERMISSION OF VERIS

**Data Sources**  
Cadastral Boundaries 31132 LC89(H).DWG  
Final Surface Contours 8606 STAGES 8A 8B3 & 8C DESIGN TINS.DWG  
Engineering Design 8606 DESIGN BASE\_20181101.DWG  
Pre-development Surface  
Orig Surface Supplied 180820 (12d Model)

Issue	Revisions	Date	Drawn
A	Original	01.11.2018	GJF

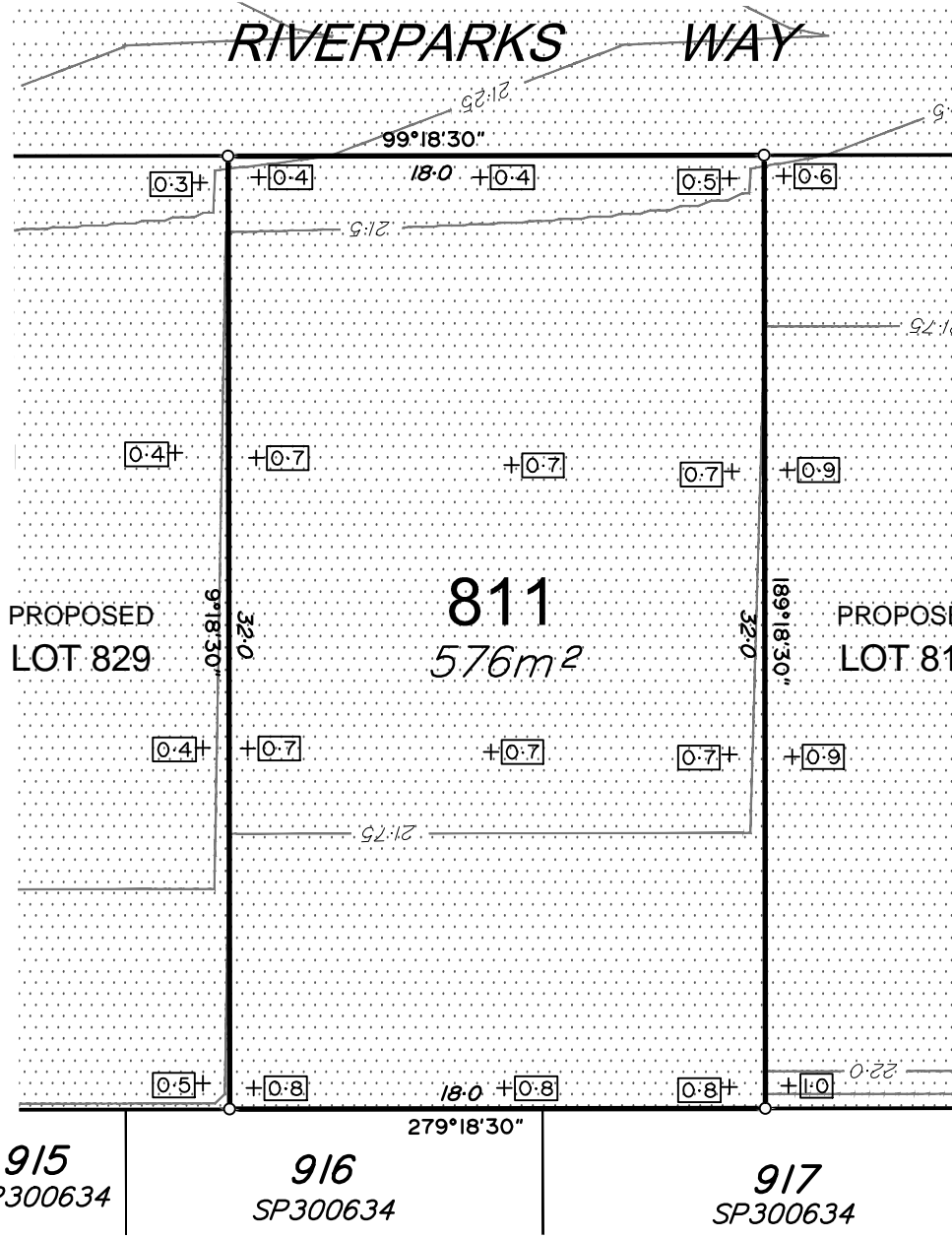
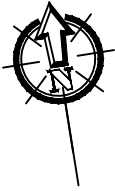
Locality: UPPER CABOOLTURE  
Local Authority: MBRC  
Horizontal Meridian: MGA Vide GNSS  
Vertical Level Datum: AHD D  
Scale: 1:250 @ A4  
Designed: Sheehy & Partners  
Drawn: GJF  
Checked: MMR  
Plot Date: 05 Nov, 2018  
Computer File Ref: 31132 St8A 8B3 8C DPs(A).DWG

**DISCLOSURE PLAN**  
of Proposed LOT 810  
being part of  
Lot 109 on SP292555



**BRISBANE** (07) 3666 4700  
**WHITSUNDAYS** (07) 4946 1722  
**MACKAY** (07) 4951 2911  
**CAIRNS** (07) 4051 6722  
veris.com.au  
ACN 615 735 727  
Veris Australia Pty Ltd

Drawing No	Issue
31132-DP 810	A



**ADDITIONAL NOTES:**

The LOT dimensions and area shown hereon are subject to final field survey and also to the requirements of Council and any other authority which may have requirements under any relevant legislation

Final surface contours shown hereon have been drawn from data supplied by Sheehy & Partners Pty Ltd.

Depth of fill values shown are calculated from the lower of the pre-development surface or the temporary basin surface.

Compaction of any fill material placed on this site shall be completed to level one inspection and testing services in accordance with AS3798-2007.

Copyright © Veris Australia Pty Ltd 1/11/2018.

**LEGEND**

Final surface contours based on A.H.D. datum at an interval of 0.25m, shown as: 21.75

Final surface level shown as:- +20.62

Where applicable, areas to be filled from the pre-development surface or the temporary basin surface are shown as:-

Depth of fill, in metres, shown as:- +1.9

Retaining wall and retaining wall height, shown on the lower side of the wall, have been drawn from plans supplied by Sheehy & Partners shown as:

(1:2)



**RIVERPARKS  
STAGE 8B3**

For

NORTHERLY PROJECTS PTY LTD

**IMPORTANT NOTES:**  
(These notes are an integral part of this plan)

This plan has been prepared for NORTHERLY PROJECTS PTY LTD for the purposes of **A Disclosure Plan Under the Land Sales Act 1984 (as amended)**.

It is not to be used by any other person or corporation or for any other purposes and is subject to the following limitations:

Please refer to the approved Development Application for conditions relating to the LOT and to approved Operational Works drawings for services location and possible easements.

THESE DESIGNS AND DRAWINGS ARE COPYRIGHT AND ARE NOT TO BE USED OR REPRODUCED WITHOUT THE WRITTEN PERMISSION OF VERIS

**Data Sources**  
Cadastral Boundaries 31132 LC89(H).DWG  
Final Surface Contours 8606 STAGES 8A 8B3 & 8C DESIGN TINS.DWG  
Engineering Design 8606 DESIGN BASE\_20181101.DWG  
Pre-development Surface  
Orig Surface Supplied 180820 (12d Model)

A	Original	01.11.2018	GJF
---	----------	------------	-----

Issue	Revisions	Date	Drawn
-------	-----------	------	-------

Locality: UPPER CABOOLTURE  
Local Authority: MBRC  
Horizontal Meridian: MGA Vide GNSS  
Vertical Level Datum: AHD D  
Scale: 1:250 @ A4  
Designed: Sheehy & Partners  
Drawn: GJF  
Checked: MMR  
Plot Date: 05 Nov, 2018  
Computer File Ref: 31132 St8A 8B3 8C DPs(A).DWG

**DISCLOSURE PLAN  
of Proposed LOT 811**

being part of  
Lot 109 on SP292555



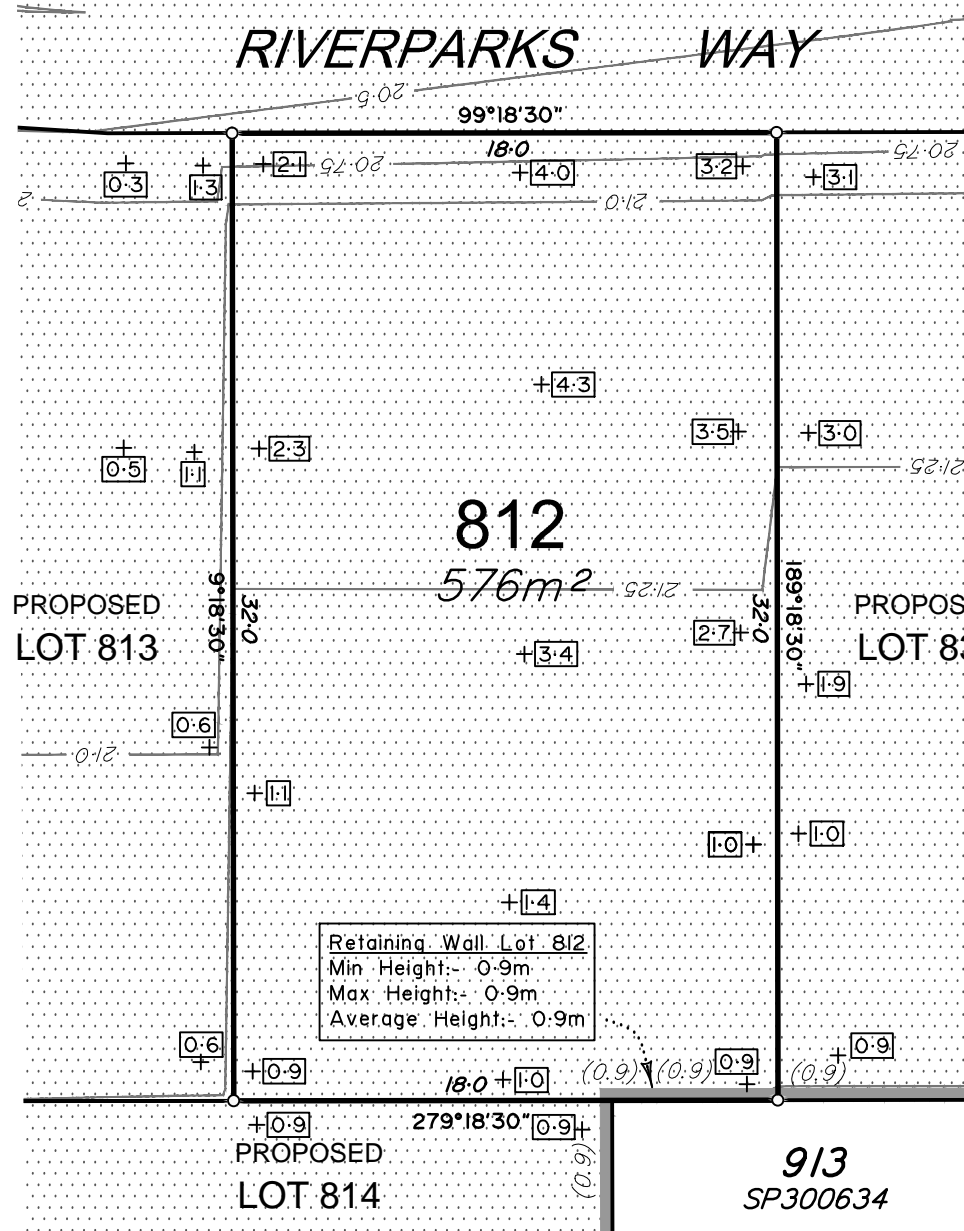
BRISBANE (07) 3666 4700 WHITSUNDAYS (07) 4945 1722  
MACKAY (07) 4951 2911 CAIRNS (07) 4051 6722

veris.com.au  
ACN 615 735 727  
Veris Australia Pty Ltd

Drawing No 31132-DP 811 Issue A



# RIVERPARKS WAY



### ADDITIONAL NOTES:

The LOT dimensions and area shown hereon are subject to final field survey and also to the requirements of Council and any other authority which may have requirements under any relevant legislation

Final surface contours shown hereon have been drawn from data supplied by Sheehy & Partners Pty Ltd.

Depth of fill values shown are calculated from the lower of the pre-development surface or the temporary basin surface.

Compaction of any fill material placed on this site shall be completed to level one inspection and testing services in accordance with AS3798-2007.

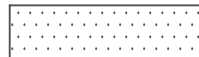
Copyright © Veris Australia Pty Ltd 1/11/2018.

## LEGEND

Final surface contours based on A.H.D. datum at an interval of 0.25m, shown as:  $21.75$

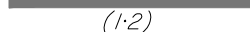
Final surface level shown as:-  $+20.62$

Where applicable, areas to be filled from the pre-development surface or the temporary basin surface are shown as:-



Depth of fill, in metres, shown as:-  $+1.9$

Retaining wall and retaining wall height, shown on the lower side of the wall, have been drawn from plans supplied by Sheehy & Partners shown as:-



## RIVERPARKS STAGE 8A

For  
NORTHERLY PROJECTS PTY LTD

**IMPORTANT NOTES:**  
(These notes are an integral part of this plan)  
This plan has been prepared for NORTHERLY PROJECTS PTY LTD, for the purposes of **A Disclosure Plan Under the Land Sales Act 1984 (as amended)**.

It is not to be used by any other person or corporation or for any other purposes and is subject to the following limitations:

Please refer to the approved Development Application for conditions relating to the LOT and to approved Operational Works drawings for services location and possible easements.

THESE DESIGNS AND DRAWINGS ARE COPYRIGHT AND ARE NOT TO BE USED OR REPRODUCED WITHOUT THE WRITTEN PERMISSION OF VERIS.

Data Sources  
Cadastral Boundaries 31132 LC89(H).DWG  
Final Surface Contours 8606 STAGES 8A 8B3 & 8C DESIGN TINS.DWG  
Engineering Design 8606 DESIGN BASE\_20181101.DWG  
Pre-development Surface  
Orig Surface Supplied 180820 (12d Model)

A	Original	01.11.2018	GJF
Issue	Revisions	Date	Drawn
Locality:	UPPER CABOOLTURE		
Local Authority:	MBRC		
Horizontal Meridian:	MGA Vide GNSS		
Vertical Level Datum:	AHD D		
Scale:	1:250 @ A4		
Designed:	Sheehy & Partners		
Drawn:	GJF		
Checked:	MMR		
Plot Date:	05 Nov, 2018		
Computer File Ref:	31132 St8A 8B3 8C DPs(A).DWG		

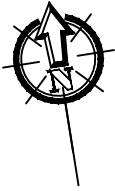
**DISCLOSURE PLAN**  
of Proposed LOT 812  
being part of  
Lot 109 on SP292555



BRISBANE (07) 3666 4700  
WHITSUNDAYS (07) 4946 1722  
MACKAY (07) 4951 2911  
CAIRNS (07) 4051 6722

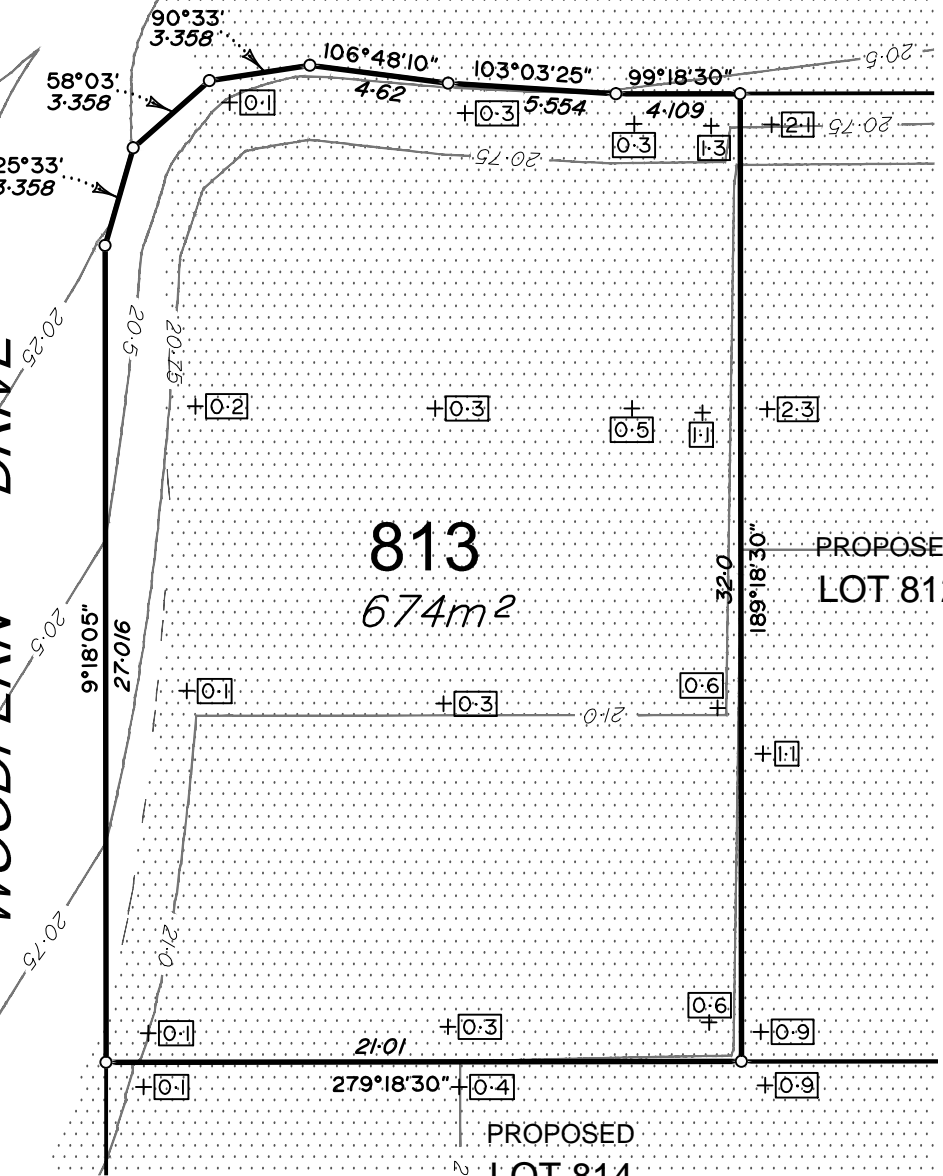
veris.com.au  
ACN 615 735 727  
Veris Australia Pty Ltd

Drawing No 31132-DP 812 Issue A



# RIVERPARKS WAY

# WOODFERN DRIVE



### ADDITIONAL NOTES:

The LOT dimensions and area shown hereon are subject to final field survey and also to the requirements of Council and any other authority which may have requirements under any relevant legislation

Final surface contours shown hereon have been drawn from data supplied by Sheehy & Partners Pty Ltd.

Depth of fill values shown are calculated from the lower of the pre-development surface or the temporary basin surface.

Compaction of any fill material placed on this site shall be completed to level one inspection and testing services in accordance with AS3798-2007.

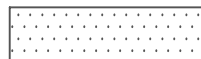
Copyright © Veris Australia Pty Ltd 1/11/2018.

## LEGEND

Final surface contours based on A.H.D. datum at an interval of 0.25m, shown as: 21.75

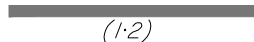
Final surface level shown as:- +20.62

Where applicable, areas to be filled from the pre-development surface or the temporary basin surface are shown as:-



Depth of fill, in metres, shown as:- +1.9

Retaining wall and retaining wall height, shown on the lower side of the wall, have been drawn from plans supplied by Sheehy & Partners shown as:



(1:2)



## RIVERPARKS STAGE 8A

For  
NORTHERLY PROJECTS PTY LTD

**IMPORTANT NOTES:**  
(These notes are an integral part of this plan)  
This plan has been prepared for NORTHERLY PROJECTS PTY LTD for the purposes of **A Disclosure Plan Under the Land Sales Act 1984 (as amended)**.  
It is not to be used by any other person or corporation or for any other purposes and is subject to the following limitations:

Please refer to the approved Development Application for conditions relating to the LOT and to approved Operational Works drawings for services location and possible easements.

THESE DESIGNS AND DRAWINGS ARE COPYRIGHT AND ARE NOT TO BE USED OR REPRODUCED WITHOUT THE WRITTEN PERMISSION OF VERIS

Data Sources  
Cadastral Boundaries 31132 LC89(H).DWG  
Final Surface Contours 8606 STAGES 8A 8B3 & 8C DESIGN TINS.DWG  
Engineering Design 8606 DESIGN BASE\_20181101.DWG  
Pre-development Surface  
Orig Surface Supplied 180820 (12d Model)

Issue	Revisions	Date	Drawn
A	Original	01.11.2018	GJF

Locality: UPPER CABOOLTURE  
 Local Authority: MBRC  
 Horizontal Meridian: MGA Vide GNSS  
 Vertical Level Datum: AHD D  
 Scale: 1:250 @ A4  
 Designed: Sheehy & Partners  
 Drawn: GJF  
 Checked: MMR  
 Plot Date: 05 Nov, 2018  
 Computer File Ref: 31132 St8A 8B3 8C DPs(A).DWG

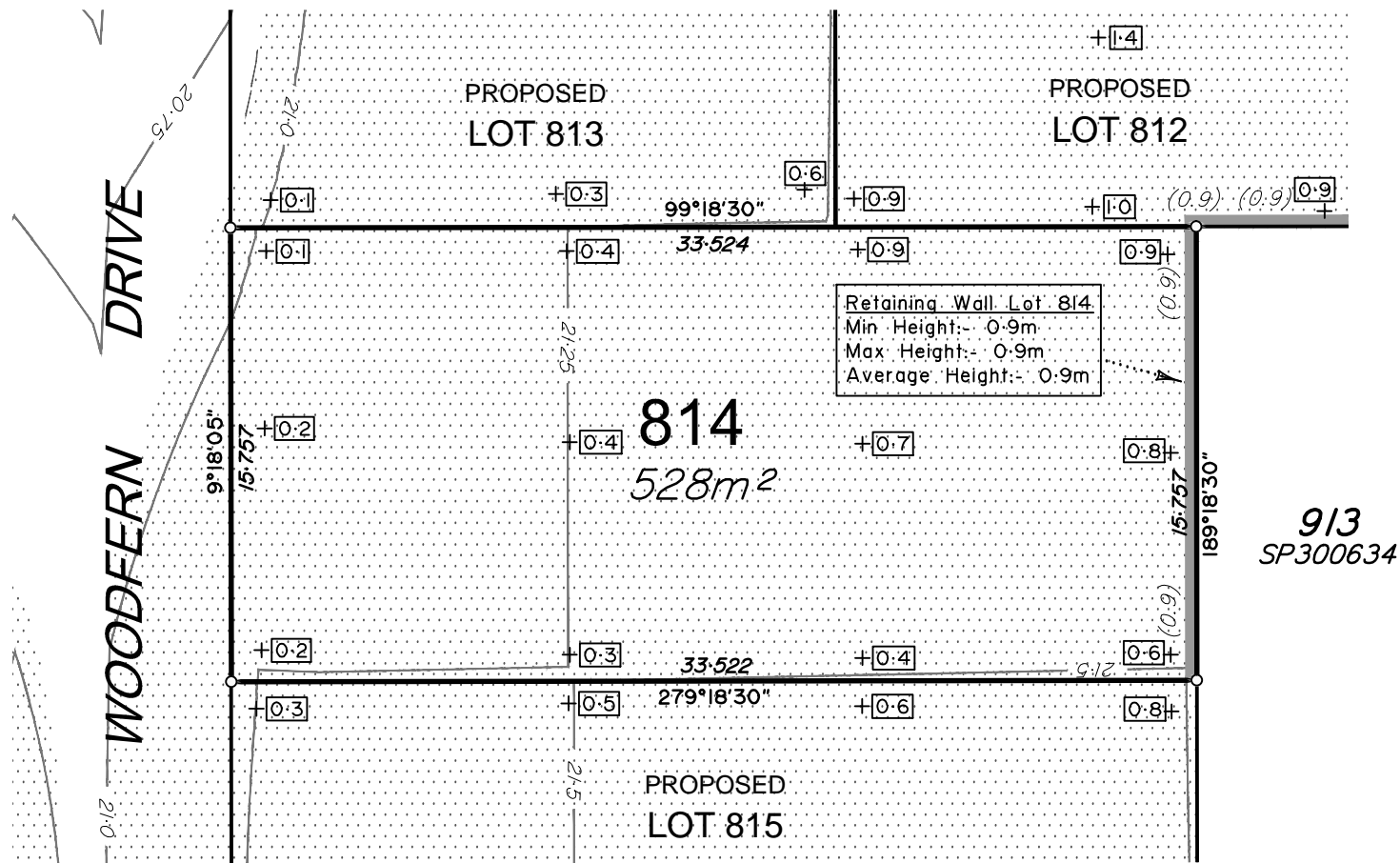
**DISCLOSURE PLAN**  
of Proposed LOT 813  
being part of  
Lot 109 on SP292555



BRISBANE (07) 3666 4700 WHITSUNDAYS (07) 4946 1722  
MACKAY (07) 4951 2911 CAIRNS (07) 4051 6722

veris.com.au  
ACN 615 735 727  
Veris Australia Pty Ltd

Drawing No 31132-DP 813 Issue A

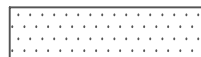


### LEGEND

Final surface contours based on A.H.D. datum at an interval of 0.25m, shown as: 21.75

Final surface level shown as:- +20.62

Where applicable, areas to be filled from the pre-development surface or the temporary basin surface are shown as:-



Depth of fill, in metres, shown as:- +1.9

Retaining wall and retaining wall height, shown on the lower side of the wall, have been drawn from plans supplied by Sheehy & Partners shown as: (1:2)



### RIVERPARKS STAGE 8A

For  
NORTHERLY PROJECTS PTY LTD

**IMPORTANT NOTES:**  
(These notes are an integral part of this plan)

This plan has been prepared for NORTHERLY PROJECTS PTY LTD for the purposes of **A Disclosure Plan Under the Land Sales Act 1984 (as amended)**.

It is not to be used by any other person or corporation or for any other purposes and is subject to the following limitations:

Please refer to the approved Development Application for conditions relating to the LOT and to approved Operational Works drawings for services location and possible easements.

THESE DESIGNS AND DRAWINGS ARE COPYRIGHT AND ARE NOT TO BE USED OR REPRODUCED WITHOUT THE WRITTEN PERMISSION OF VERIS

**Data Sources**  
Cadastral Boundaries 31132 LC89(H).DWG  
Final Surface Contours 8606 STAGES 8A 8B3 & 8C DESIGN TINS.DWG  
Engineering Design 8606 DESIGN BASE\_20181101.DWG  
Pre-development Surface  
Orig Surface Supplied 180820 (12d Model)

Issue	Revisions	Date	Drawn	GJF
A	Original	01.11.2018		GJF

Local Authority: UPPER CABOOLTURE  
Local Authority: MBRC  
Horizontal Meridian: MGA Vide GNSS  
Vertical Level Datum: AHD D  
Scale: 1:250 @ A4  
Designed: Sheehy & Partners  
Drawn: GJF  
Checked: MMR  
Plot Date: 05 Nov, 2018  
Computer File Ref: 31132 St8A 8B3 8C DPs(A).DWG

### DISCLOSURE PLAN of Proposed LOT 814

being part of  
Lot 109 on SP292555



BRISBANE (07) 3666 4700  
WHITSUNDAYS (07) 4946 1722  
MACKAY (07) 4951 2911  
CAIRNS (07) 4051 6722

veris.com.au  
ACN 615 735 727  
Veris Australia Pty Ltd

**ADDITIONAL NOTES:**  
The LOT dimensions and area shown hereon are subject to final field survey and also to the requirements of Council and any other authority which may have requirements under any relevant legislation

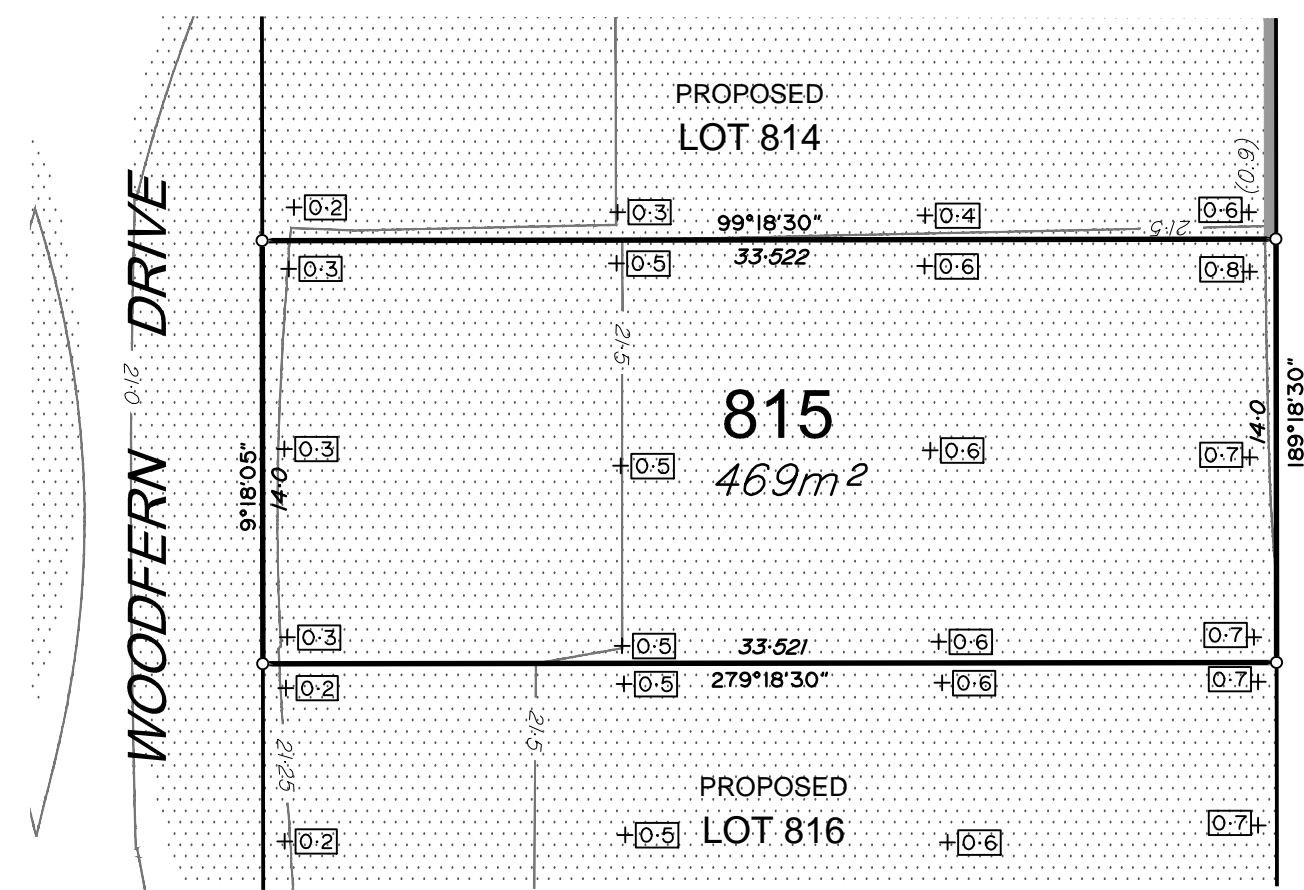
Final surface contours shown hereon have been drawn from data supplied by Sheehy & Partners Pty Ltd.

Depth of fill values shown are calculated from the lower of the pre-development surface or the temporary basin surface.

Compaction of any fill material placed on this site shall be completed to level one inspection and testing services in accordance with AS3798-2007.

Copyright © Veris Australia Pty Ltd 1/11/2018.

Drawing No  
**31132-DP 814**  
Issue  
**A**



RIVERPARKS  
STAGE 8A

For  
NORTHERLY PROJECTS PTY LTD

**IMPORTANT NOTES:**  
(These notes are an integral part of this plan)  
This plan has been prepared for NORTHERLY PROJECTS PTY LTD for the purposes of **A Disclosure Plan Under the Land Sales Act 1984 (as amended)**.  
It is not to be used by any other person or corporation or for any other purposes and is subject to the following limitations:

Please refer to the approved Development Application for conditions relating to the LOT and to approved Operational Works drawings for services location and possible easements.

THESE DESIGNS AND DRAWINGS ARE COPYRIGHT AND ARE NOT TO BE USED OR REPRODUCED WITHOUT THE WRITTEN PERMISSION OF VERIS

Data Sources  
Cadastral Boundaries 31132 LC89(H).DWG  
Final Surface Contours 8606 STAGES 8A 8B3 & 8C DESIGN TINS.DWG  
Engineering Design 8606 DESIGN BASE\_20181101.DWG  
Pre-development Surface  
Orig Surface Supplied 180820 (12d Model)

913  
SP300634

Issue	Revisions	Date	Drawn	GJF
A	Original	01.11.2018		GJF

Locality: UPPER CABOOLTURE  
Local Authority: MBRC  
Horizontal Meridian: MGA Vide GNSS  
Vertical Level Datum: AHD D  
Scale: 1:250 @ A4  
Designed: Sheehy & Partners  
Drawn: GJF  
Checked: MMR  
Plot Date: 05 Nov, 2018  
Computer File Ref: 31132 St8A 8B3 8C DPs(A).DWG

**DISCLOSURE PLAN**  
of Proposed LOT 815  
being part of  
Lot 109 on SP292555



BRISBANE (07) 3666 4700 WHITSUNDAYS (07) 4946 1722  
MACKAY (07) 4951 2911 CAIRNS (07) 4051 6722  
veris.com.au  
ACN 615 735 727  
Veris Australia Pty Ltd

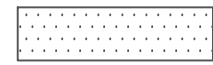
Drawing No 31132-DP 815 Issue A

**LEGEND**

Final surface contours based on A.H.D. datum at an interval of 0.25m, shown as: 21.75

Final surface level shown as:- +20.62

Where applicable, areas to be filled from the pre-development surface or the temporary basin surface are shown as:-



Depth of fill, in metres, shown as:- +1.9

Retaining wall and retaining wall height, shown on the lower side of the wall, have been drawn from plans supplied by Sheehy & Partners shown as: (1:2)

**ADDITIONAL NOTES:**  
The LOT dimensions and area shown hereon are subject to final field survey and also to the requirements of Council and any other authority which may have requirements under any relevant legislation

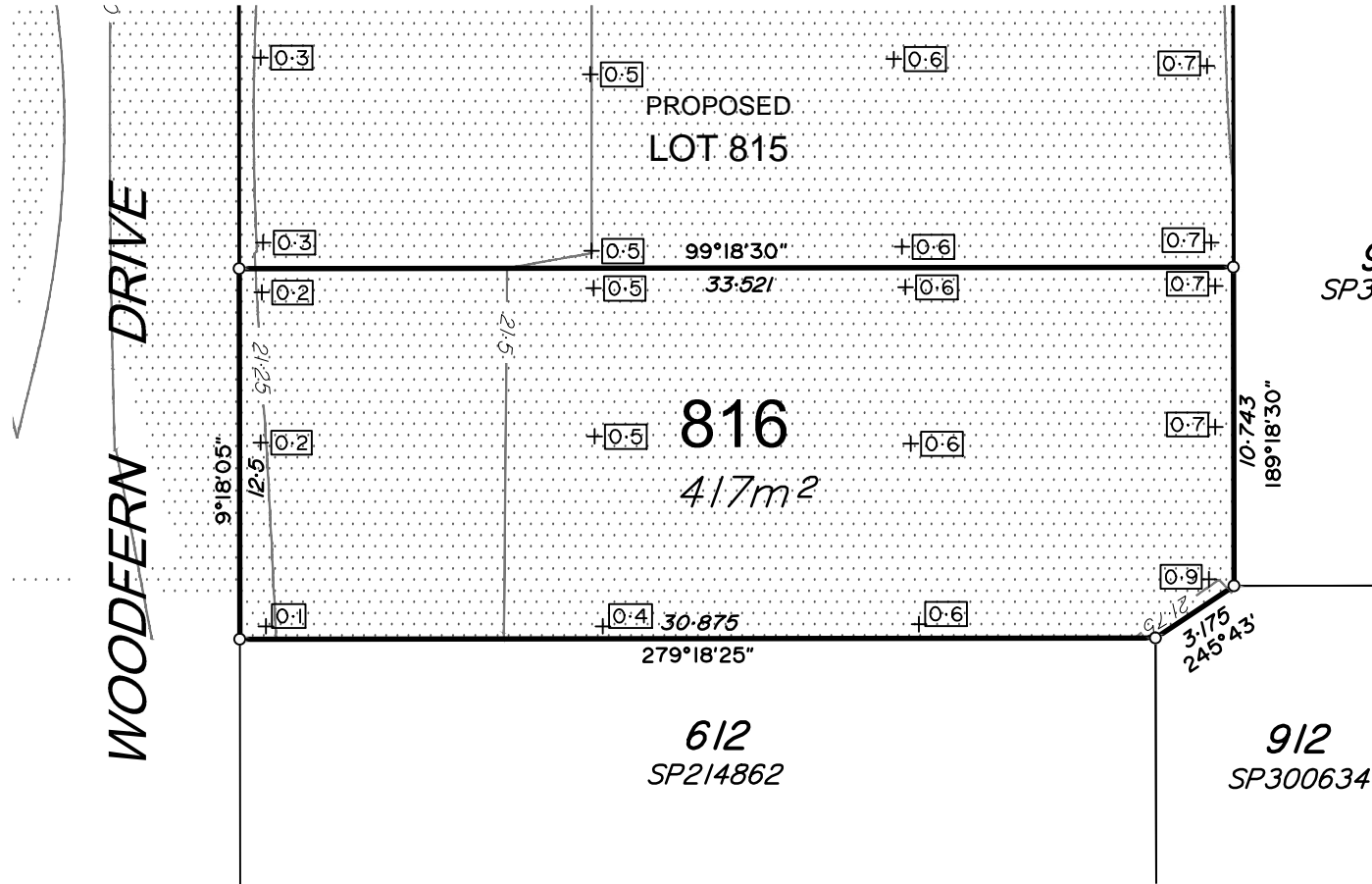
Final surface contours shown hereon have been drawn from data supplied by Sheehy & Partners Pty Ltd.

Depth of fill values shown are calculated from the lower of the pre-development surface or the temporary basin surface.

Compaction of any fill material placed on this site shall be completed to level one inspection and testing services in accordance with AS3798-2007.

Copyright © Veris Australia Pty Ltd 1/11/2018.



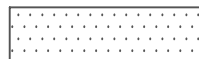


## LEGEND

Final surface contours based on A.H.D. datum at an interval of 0.25m, shown as: 21.75

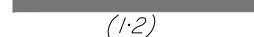
Final surface level shown as:- +20.62

Where applicable, areas to be filled from the pre-development surface or the temporary basin surface are shown as:-



Depth of fill, in metres, shown as:- +0.9

Retaining wall and retaining wall height, shown on the lower side of the wall, have been drawn from plans supplied by Sheehy & Partners shown as:



(1:2)



## RIVERPARKS STAGE 8A

For  
NORTHERLY PROJECTS PTY LTD

**IMPORTANT NOTES:**  
(These notes are an integral part of this plan)

This plan has been prepared for NORTHERLY PROJECTS PTY LTD for the purposes of **A Disclosure Plan Under the Land Sales Act 1984 (as amended)**.

It is not to be used by any other person or corporation or for any other purposes and is subject to the following limitations:

Please refer to the approved Development Application for conditions relating to the LOT and to approved Operational Works drawings for services location and possible easements.

THESE DESIGNS AND DRAWINGS ARE COPYRIGHT AND ARE NOT TO BE USED OR REPRODUCED WITHOUT THE WRITTEN PERMISSION OF VERIS

Data Sources  
Cadastral Boundaries 31132 LC89(H).DWG  
Final Surface Contours 8606 STAGES 8A 8B3 & 8C DESIGN TINS.DWG  
Engineering Design 8606 DESIGN BASE\_20181101.DWG  
Pre-development Surface  
Orig Surface Supplied 180820 (12d Model)

Issue	Revisions	Date	Drawn
A	Original	01.11.2018	GJF

Locality: UPPER CABOOLTURE  
Local Authority: MBRC  
Horizontal Meridian: MGA Vide GNSS  
Vertical Level Datum: AHD D  
Scale: 1:250 @ A4  
Designed: Sheehy & Partners  
Drawn: GJF  
Checked: MMR  
Plot Date: 05 Nov, 2018  
Computer File Ref: 31132 St8A 8B3 8C DPs(A).DWG

## DISCLOSURE PLAN of Proposed LOT 816

being part of  
Lot 109 on SP292555



BRISBANE (07) 3666 4700 WHITSUNDAYS (07) 4945 1722  
MACKAY (07) 4951 2911 CAIRNS (07) 4051 6722

veris.com.au  
ACN 615 735 727  
Veris Australia Pty Ltd

Drawing No 31132-DP 816 Issue A

### ADDITIONAL NOTES:

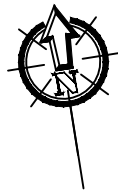
The LOT dimensions and area shown hereon are subject to final field survey and also to the requirements of Council and any other authority which may have requirements under any relevant legislation

Final surface contours shown hereon have been drawn from data supplied by Sheehy & Partners Pty Ltd.

Depth of fill values shown are calculated from the lower of the pre-development surface or the temporary basin surface.

Compaction of any fill material placed on this site shall be completed to level one inspection and testing services in accordance with AS3798-2007.

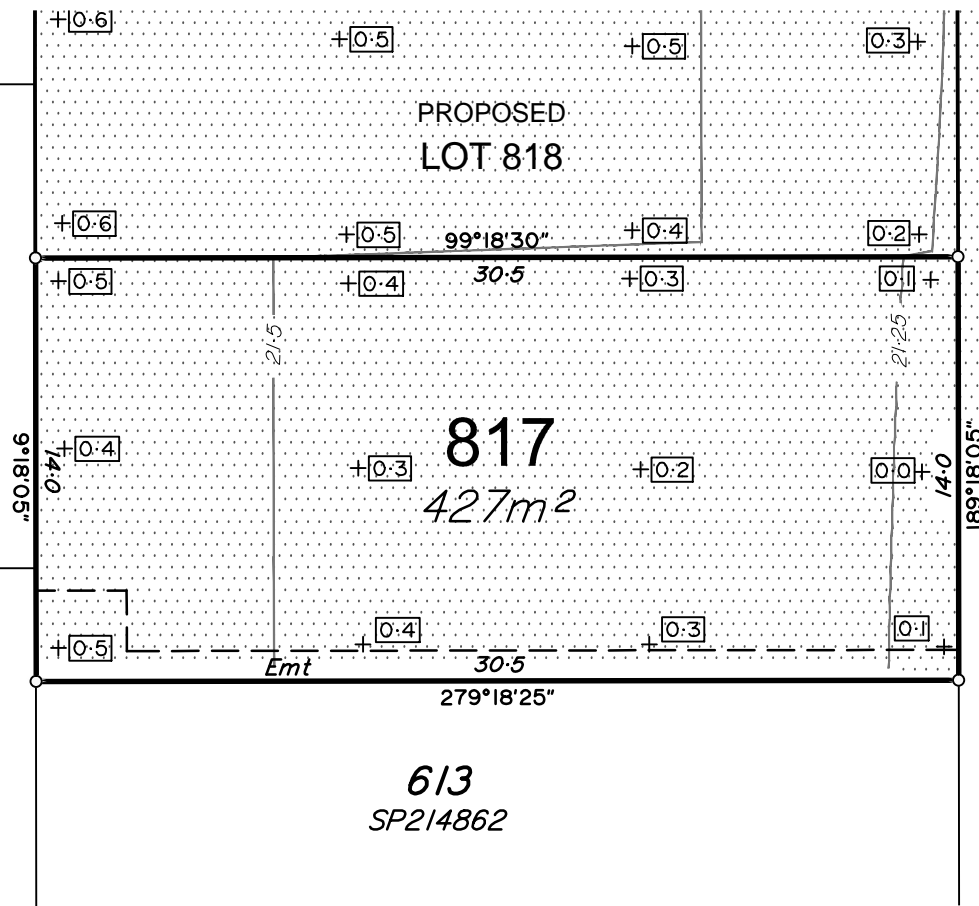
Copyright © Veris Australia Pty Ltd 1/11/2018.



PROPOSED  
LOT 111

1025  
SP297696

1024  
SP297696



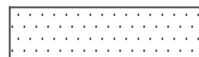
WOODFERN DRIVE

### LEGEND

Final surface contours based on A.H.D. datum at an interval of 0.25m, shown as: 21.75

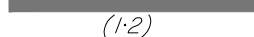
Final surface level shown as:- +20.62

Where applicable, areas to be filled from the pre-development surface or the temporary basin surface are shown as:-



Depth of fill, in metres, shown as:- +0.9

Retaining wall and retaining wall height, shown on the lower side of the wall, have been drawn from plans supplied by Sheehy & Partners shown as:



(1:2)



### ADDITIONAL NOTES:

The LOT dimensions and area shown hereon are subject to final field survey and also to the requirements of Council and any other authority which may have requirements under any relevant legislation

Final surface contours shown hereon have been drawn from data supplied by Sheehy & Partners Pty Ltd.

Depth of fill values shown are calculated from the lower of the pre-development surface or the temporary basin surface.

Compaction of any fill material placed on this site shall be completed to level one inspection and testing services in accordance with AS3798-2007.

Copyright © Veris Australia Pty Ltd 1/11/2018.

## RIVERPARKS STAGE 8A

For  
NORTHERLY PROJECTS PTY LTD

**IMPORTANT NOTES:**  
(These notes are an integral part of this plan)  
This plan has been prepared for NORTHERLY PROJECTS PTY LTD for the purposes of **A Disclosure Plan Under the Land Sales Act 1984 (as amended)**.  
It is not to be used by any other person or corporation or for any other purposes and is subject to the following limitations:

Please refer to the approved Development Application for conditions relating to the LOT and to approved Operational Works drawings for services location and possible easements.

THESE DESIGNS AND DRAWINGS ARE COPYRIGHT AND ARE NOT TO BE USED OR REPRODUCED WITHOUT THE WRITTEN PERMISSION OF VERIS

**Data Sources**  
Cadastral Boundaries 31132 LC89(H).DWG  
Final Surface Contours 8606 STAGES 8A 8B3 & 8C DESIGN TINS.DWG  
Engineering Design 8606 DESIGN BASE\_20181101.DWG  
Pre-development Surface Orig Surface Supplied 180820 (12d Model)

Issue	Revisions	Date	Drawn
A	Original	01.11.2018	GJF

Locality: UPPER CABOOLTURE  
Local Authority: MBRC  
Horizontal Meridian: MGA Vide GNSS  
Vertical Level Datum: AHD D  
Scale: 1:250 @ A4  
Designed: Sheehy & Partners  
Drawn: GJF  
Checked: MMR  
Plot Date: 05 Nov, 2018  
Computer File Ref: 31132 St8A 8B3 8C DPs(A).DWG

### DISCLOSURE PLAN of Proposed LOT 817

being part of  
Lot 109 on SP292555



BRISBANE (07) 3666 4700 WHITSUNDAYS (07) 4945 1722  
MACKAY (07) 4951 2911 CAIRNS (07) 4051 6722  
veris.com.au  
ACN 615 735 727  
Veris Australia Pty Ltd

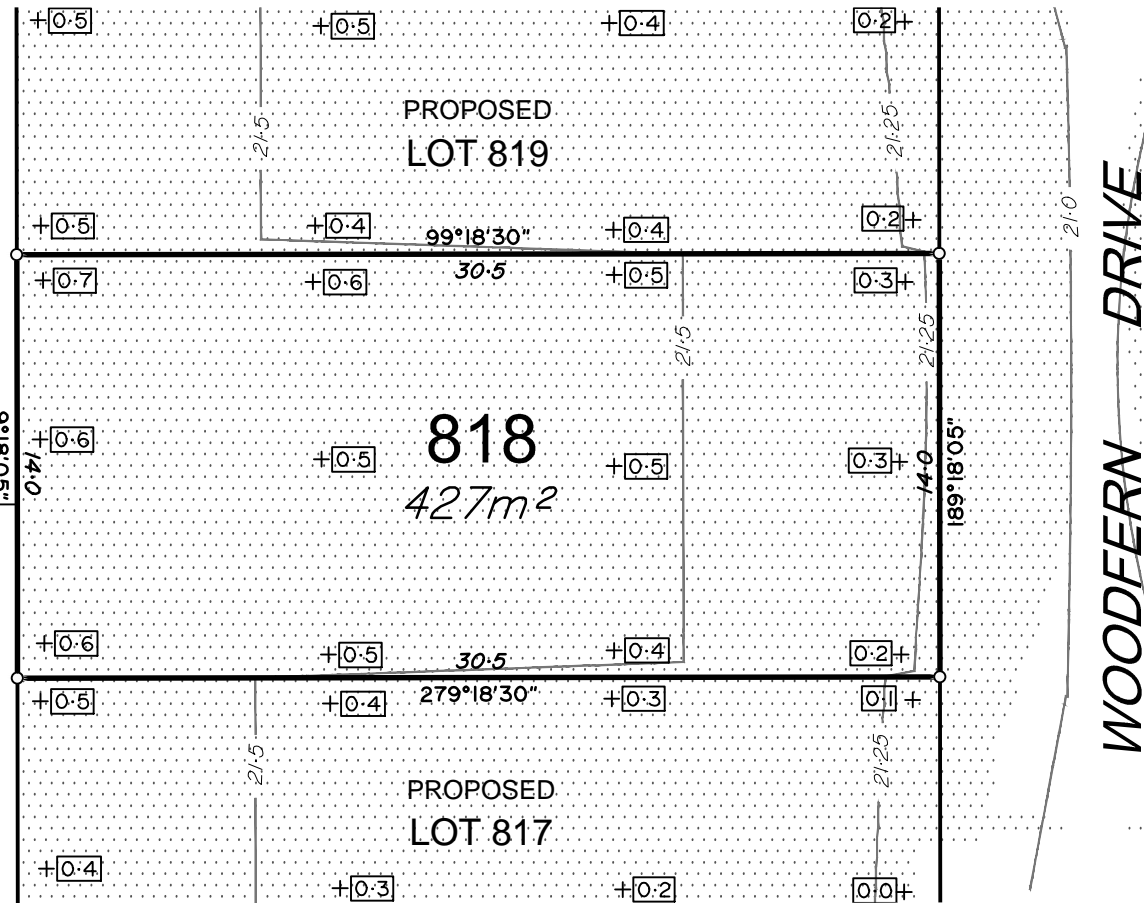
Drawing No 31132-DP 817 Issue A





PROPOSED LOT 111

1025  
SP297696



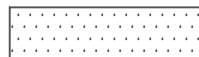
WOODFERN DRIVE

### LEGEND

Final surface contours based on A.H.D. datum at an interval of 0.25m, shown as: 21.75

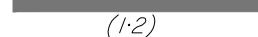
Final surface level shown as:- +20.62

Where applicable, areas to be filled from the pre-development surface or the temporary basin surface are shown as:-



Depth of fill, in metres, shown as:- +1.9

Retaining wall and retaining wall height, shown on the lower side of the wall, have been drawn from plans supplied by Sheehy & Partners shown as:



(1:2)



### ADDITIONAL NOTES:

The LOT dimensions and area shown hereon are subject to final field survey and also to the requirements of Council and any other authority which may have requirements under any relevant legislation

Final surface contours shown hereon have been drawn from data supplied by Sheehy & Partners Pty Ltd.

Depth of fill values shown are calculated from the lower of the pre-development surface or the temporary basin surface.

Compaction of any fill material placed on this site shall be completed to level one inspection and testing services in accordance with AS3798-2007.

Copyright © Veris Australia Pty Ltd 1/11/2018.

## RIVERPARKS STAGE 8A

For  
NORTHERLY PROJECTS PTY LTD

**IMPORTANT NOTES:**  
(These notes are an integral part of this plan)

This plan has been prepared for NORTHERLY PROJECTS PTY LTD for the purposes of **A Disclosure Plan Under the Land Sales Act 1984 (as amended)**.

It is not to be used by any other person or corporation or for any other purposes and is subject to the following limitations:

Please refer to the approved Development Application for conditions relating to the LOT and to approved Operational Works drawings for services location and possible easements.

THESE DESIGNS AND DRAWINGS ARE COPYRIGHTED AND ARE NOT TO BE USED OR REPRODUCED WITHOUT THE WRITTEN PERMISSION OF VERIS

Data Sources  
Cadastral Boundaries 31132 LC89(H).DWG  
Final Surface Contours 8606 STAGES 8A 8B3 & 8C DESIGN TINS.DWG  
Engineering Design 8606 DESIGN BASE\_20181101.DWG  
Pre-development Surface  
Orig Surface Supplied 180820 (12d Model)

Issue	Revisions	Date	Drawn	GJF
A	Original	01.11.2018		

Locality: UPPER CABOOLTURE  
Local Authority: MBRC  
Horizontal Meridian: MGA Vide GNSS  
Vertical Level Datum: AHD D  
Scale: 1:250 @ A4  
Designed: Sheehy & Partners  
Drawn: GJF  
Checked: MMR  
Plot Date: 05 Nov, 2018  
Computer File Ref: 31132 St8A 8B3 8C DPs(A).DWG

### DISCLOSURE PLAN of Proposed LOT 818

being part of  
Lot 109 on SP292555

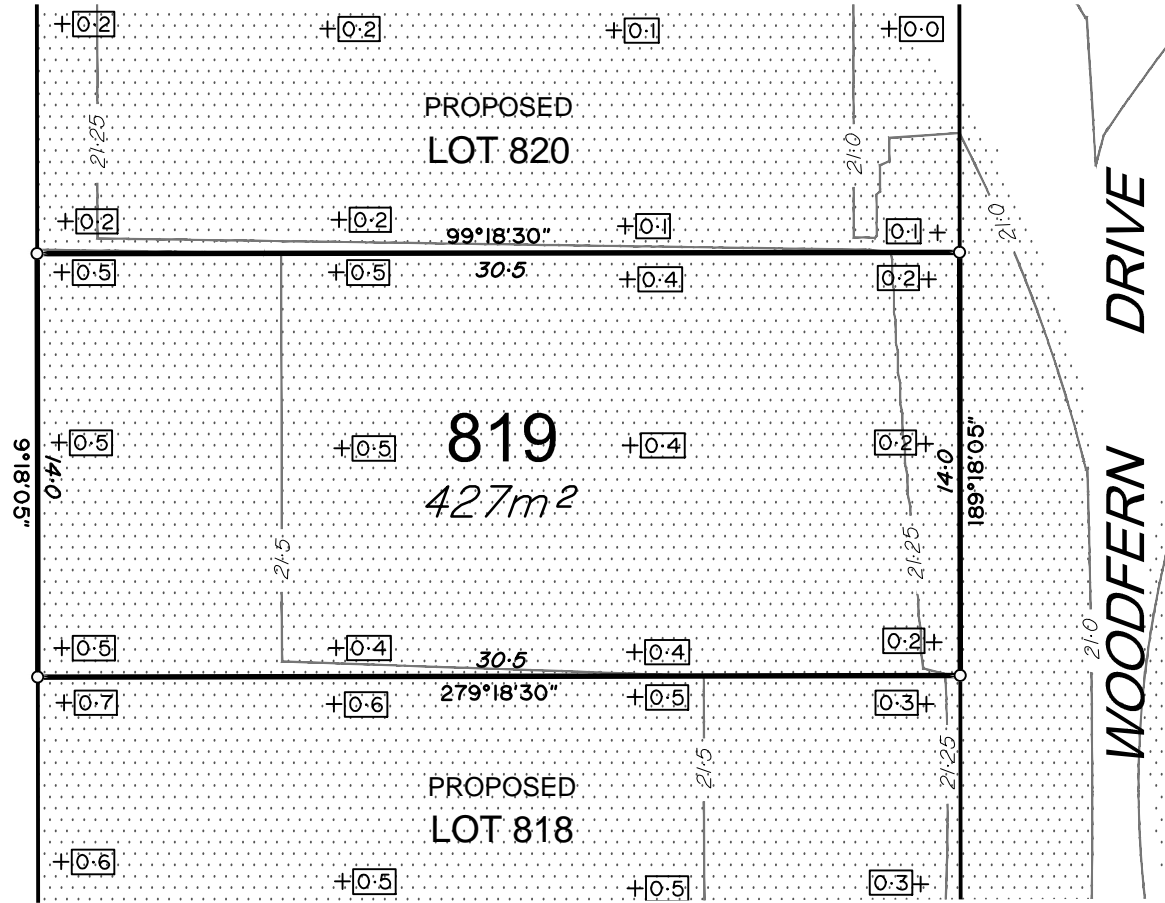


BRISBANE (07) 3666 4700 WHITSUNDAYS (07) 4945 1722  
MACKAY (07) 4951 2911 CAIRNS (07) 4051 6722  
veris.com.au  
ACN 615 735 727  
Veris Australia Pty Ltd

Drawing No 31132-DP 818 Issue A



PROPOSED  
LOT 111

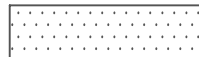


## LEGEND

Final surface contours based on A.H.D. datum at an interval of 0.25m, shown as: 21.75

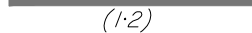
Final surface level shown as:- +20.62

Where applicable, areas to be filled from the pre-development surface or the temporary basin surface are shown as:-



Depth of fill, in metres, shown as:- 1.9

Retaining wall and retaining wall height, shown on the lower side of the wall, have been drawn from plans supplied by Sheehy & Partners shown as:



(1:2)



### ADDITIONAL NOTES:

The LOT dimensions and area shown hereon are subject to final field survey and also to the requirements of Council and any other authority which may have requirements under any relevant legislation

Final surface contours shown hereon have been drawn from data supplied by Sheehy & Partners Pty Ltd.

Depth of fill values shown are calculated from the lower of the pre-development surface or the temporary basin surface.

Compaction of any fill material placed on this site shall be completed to level one inspection and testing services in accordance with AS3798-2007.

Copyright © Veris Australia Pty Ltd 1/11/2018.

## RIVERPARKS STAGE 8A

For  
NORTHERLY PROJECTS PTY LTD

**IMPORTANT NOTES:**  
(These notes are an integral part of this plan)  
This plan has been prepared for NORTHERLY PROJECTS PTY LTD for the purposes of **A Disclosure Plan Under the Land Sales Act 1984 (as amended)**.  
It is not to be used by any other person or corporation or for any other purposes and is subject to the following limitations:

Please refer to the approved Development Application for conditions relating to the LOT and to approved Operational Works drawings for services location and possible easements.

THESE DESIGNS AND DRAWINGS ARE COPYRIGHT AND ARE NOT TO BE USED OR REPRODUCED WITHOUT THE WRITTEN PERMISSION OF VERIS

Data Sources  
Cadastral Boundaries 31132 LC89(H).DWG  
Final Surface Contours 8606 STAGES 8A 8B3 & 8C DESIGN TINS.DWG  
Engineering Design 8606 DESIGN BASE\_20181101.DWG  
Pre-development Surface Orig Surface Supplied 180820 (12d Model)

Issue	Revisions	Date	Drawn	GJF
A	Original	01.11.2018		

Locality: UPPER CABOOLTURE  
Local Authority: MBRC  
Horizontal Meridian: MGA Vide GNSS  
Vertical Level Datum: AHD D  
Scale: 1:250 @ A4  
Designed: Sheehy & Partners  
Drawn: GJF  
Checked: MMR  
Plot Date: 05 Nov, 2018  
Computer File Ref: 31132 St8A 8B3 8C DPs(A).DWG

## DISCLOSURE PLAN of Proposed LOT 819

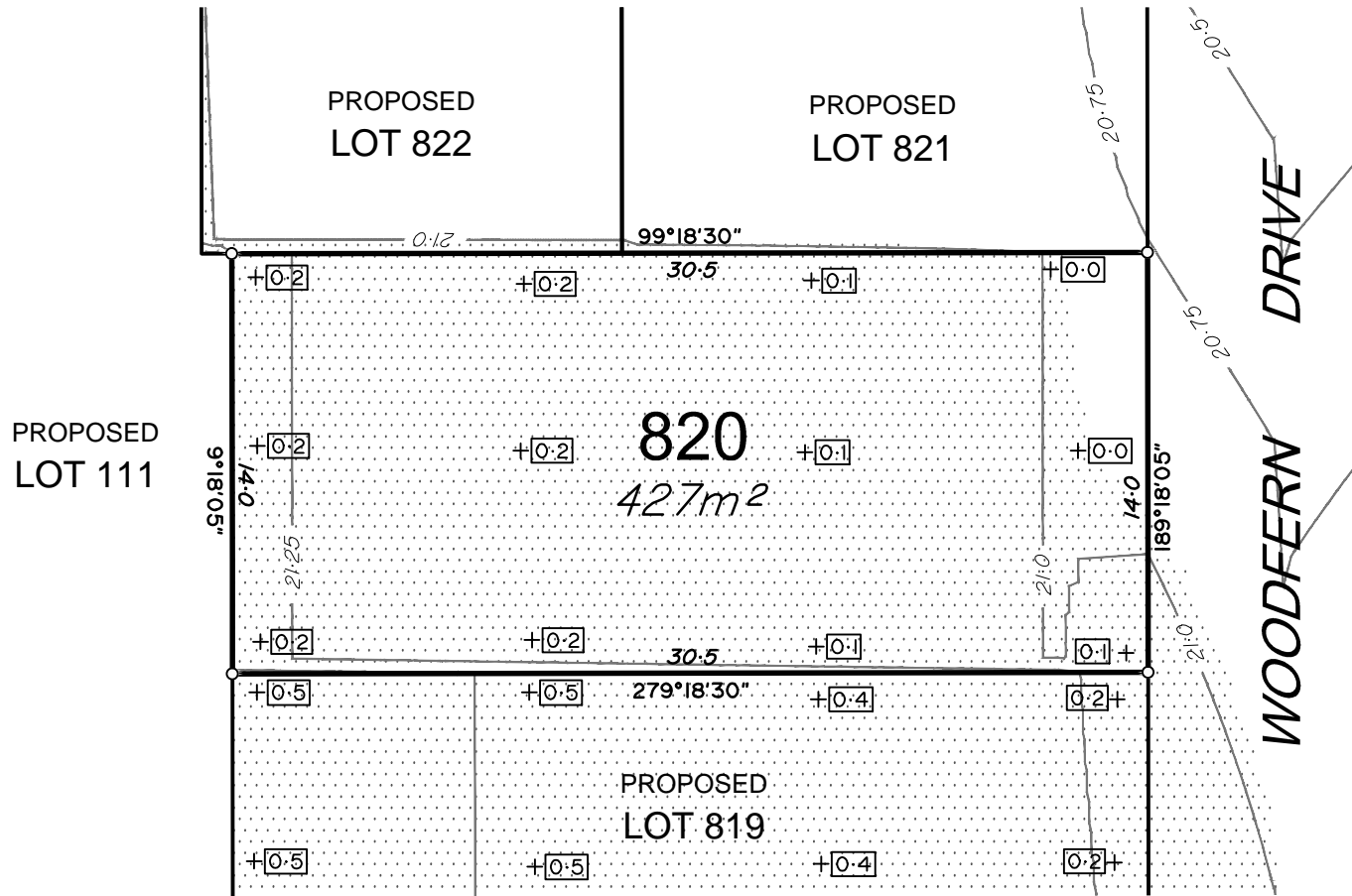
being part of  
Lot 109 on SP292555



BRISBANE (07) 3666 4700  
WHITSUNDAYS (07) 4945 1722  
MACKAY (07) 4951 2911  
CAIRNS (07) 4051 6722

veris.com.au  
ACN 615 735 727  
Veris Australia Pty Ltd

Drawing No  
31132-DP 819  
Issue  
A

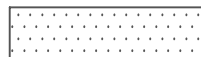


### LEGEND

Final surface contours based on A.H.D. datum at an interval of 0.25m, shown as:  $\text{---} 21.75 \text{---}$

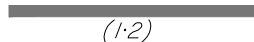
Final surface level shown as:-  $+20.62$

Where applicable, areas to be filled from the pre-development surface or the temporary basin surface are shown as:-



Depth of fill, in metres, shown as:-  $+1.9$

Retaining wall and retaining wall height, shown on the lower side of the wall, have been drawn from plans supplied by Sheehy & Partners shown as:



(1:2)



### ADDITIONAL NOTES:

The LOT dimensions and area shown hereon are subject to final field survey and also to the requirements of Council and any other authority which may have requirements under any relevant legislation

Final surface contours shown hereon have been drawn from data supplied by Sheehy & Partners Pty Ltd.

Depth of fill values shown are calculated from the lower of the pre-development surface or the temporary basin surface.

Compaction of any fill material placed on this site shall be completed to level one inspection and testing services in accordance with AS3798-2007.

Copyright © Veris Australia Pty Ltd 1/11/2018.

## RIVERPARKS STAGE 8A

For  
NORTHERLY PROJECTS PTY LTD

**IMPORTANT NOTES:**  
(These notes are an integral part of this plan)  
This plan has been prepared for NORTHERLY PROJECTS PTY LTD for the purposes of **A Disclosure Plan Under the Land Sales Act 1984 (as amended)**.  
It is not to be used by any other person or corporation or for any other purposes and is subject to the following limitations:

Please refer to the approved Development Application for conditions relating to the LOT and to approved Operational Works drawings for services location and possible easements.

THESE DESIGNS AND DRAWINGS ARE COPYRIGHT AND ARE NOT TO BE USED OR REPRODUCED WITHOUT THE WRITTEN PERMISSION OF VERIS

Data Sources  
Cadastral Boundaries 31132 LC89(H).DWG  
Final Surface Contours 8606 STAGES 8A 8B3 & 8C DESIGN TINS.DWG  
Engineering Design 8606 DESIGN BASE\_20181101.DWG  
Pre-development Surface  
Orig Surface Supplied 180820 (12d Model)

Issue	Revisions	Date	Drawn	GJF
A	Original	01.11.2018		

Locality: UPPER CABOOLTURE  
Local Authority: MBRC  
Horizontal Meridian: MGA Vide GNSS  
Vertical Level Datum: AHD D  
Scale: 1:250 @ A4  
Designed: Sheehy & Partners  
Drawn: GJF  
Checked: MMR  
Plot Date: 05 Nov, 2018  
Computer File Ref: 31132 St8A 8B3 8C DP(A).DWG

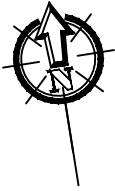
**DISCLOSURE PLAN**  
of Proposed LOT 820  
being part of  
Lot 109 on SP292555



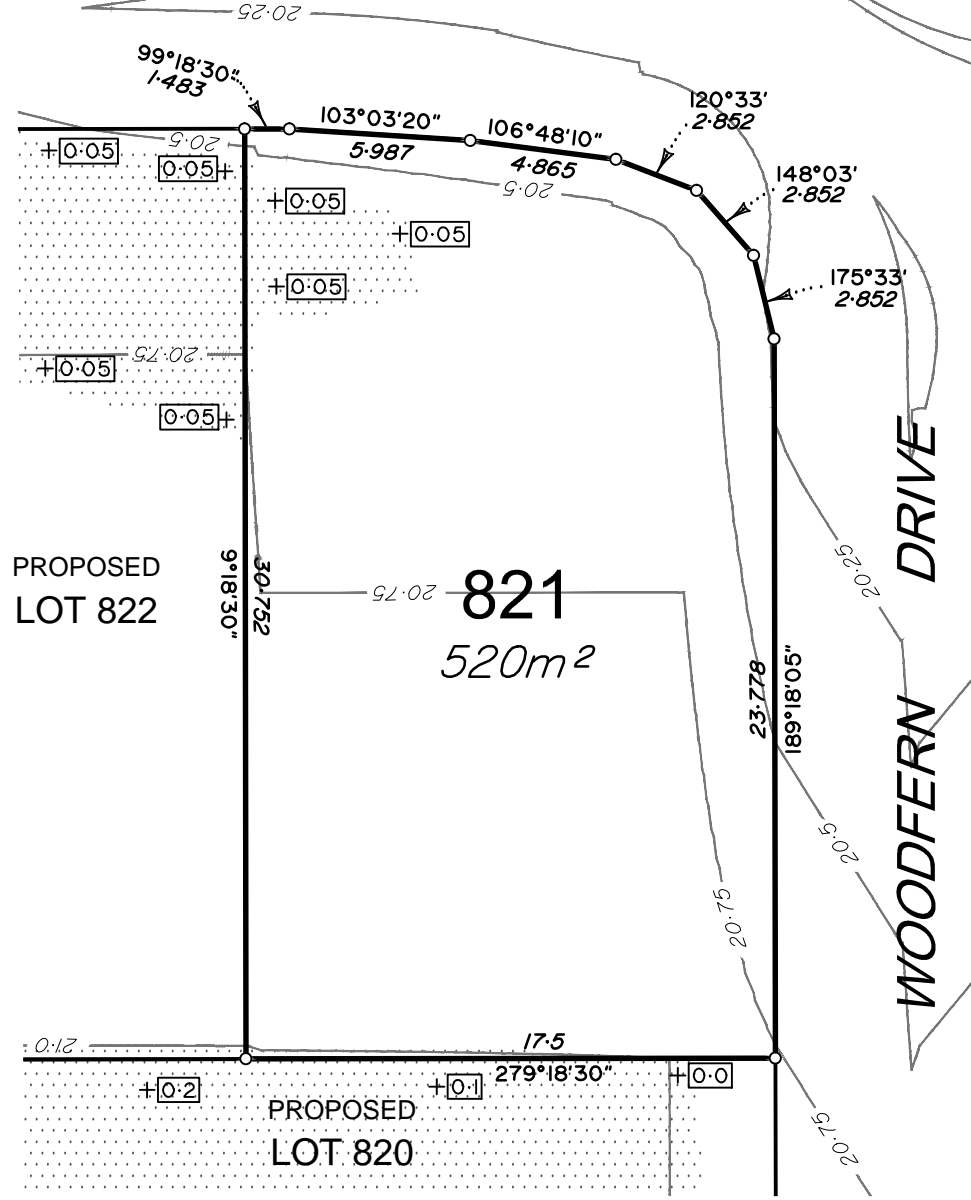
BRISBANE (07) 3666 4700 WHITSUNDAYS (07) 4945 1722  
MACKAY (07) 4951 2911 CAIRNS (07) 4051 6722

veris.com.au  
ACN 615 735 727  
Veris Australia Pty Ltd

Drawing No 31132-DP 820 Issue A



# RIVERPARKS WAY



**ADDITIONAL NOTES:**

The LOT dimensions and area shown hereon are subject to final field survey and also to the requirements of Council and any other authority which may have requirements under any relevant legislation

Final surface contours shown hereon have been drawn from data supplied by Sheehy & Partners Pty Ltd.

Depth of fill values shown are calculated from the lower of the pre-development surface or the temporary basin surface.

Compaction of any fill material placed on this site shall be completed to level one inspection and testing services in accordance with AS3798-2007.

Copyright © Veris Australia Pty Ltd 1/11/2018.

## LEGEND

Final surface contours based on A.H.D. datum at an interval of 0.25m, shown as: 21.75

Final surface level shown as:- +20.62

Where applicable, areas to be filled from the pre-development surface or the temporary basin surface are shown as:-

Depth of fill, in metres, shown as:- 1.9

Retaining wall and retaining wall height, shown on the lower side of the wall, have been drawn from plans supplied by Sheehy & Partners shown as:

(1:2)



## RIVERPARKS STAGE 8A

For  
NORTHERLY PROJECTS PTY LTD

**IMPORTANT NOTES:**  
(These notes are an integral part of this plan)  
This plan has been prepared for NORTHERLY PROJECTS PTY LTD for the purposes of **A Disclosure Plan Under the Land Sales Act 1984 (as amended)**.

It is not to be used by any other person or corporation or for any other purposes and is subject to the following limitations:

Please refer to the approved Development Application for conditions relating to the LOT and to approved Operational Works drawings for services location and possible easements.

THESE DESIGNS AND DRAWINGS ARE COPYRIGHT AND ARE NOT TO BE USED OR REPRODUCED WITHOUT THE WRITTEN PERMISSION OF VERIS

Data Sources  
Cadastral Boundaries 31132 LC89(H).DWG  
Final Surface Contours 8606 STAGES 8A 8B3 & 8C DESIGN TINS.DWG  
Engineering Design 8606 DESIGN BASE\_20181101.DWG  
Pre-development Surface  
Orig Surface Supplied 180820 (12d Model)

Issue	Revisions	Date	Drawn	GJF
A	Original	01.11.2018		GJF

Locality: UPPER CABOOLTURE  
Local Authority: MBRC  
Horizontal Meridian: MGA Vide GNSS  
Vertical Level Datum: AHD D  
Scale: 1:250 @ A4  
Designed: Sheehy & Partners  
Drawn: GJF  
Checked: MMR  
Plot Date: 05 Nov, 2018  
Computer File Ref: 31132 St8A 8B3 8C DPs(A).DWG

## DISCLOSURE PLAN

of Proposed LOT 821  
being part of  
Lot 109 on SP292555



BRISBANE (07) 3666 4700 WHITSUNDAYS (07) 4945 1722  
MACKAY (07) 4951 2911 CAIRNS (07) 4051 6722

veris.com.au  
ACN 615 735 727  
Veris Australia Pty Ltd

Drawing No 31132-DP 821 Issue A



**ADDITIONAL NOTES:**

The LOT dimensions and area shown hereon are subject to final field survey and also to the requirements of Council and any other authority which may have requirements under any relevant legislation


Final surface contours shown hereon have been drawn from data supplied by Sheehy & Partners Pty Ltd.

Depth of fill values shown are calculated from the lower of the pre-development surface or the temporary basin surface.

Compaction of any fill material placed on this site shall be completed to level one inspection and testing services in accordance with AS3798-2007.

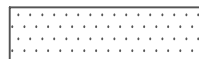
Copyright © Veris Australia Pty Ltd 1/11/2018.

**LEGEND**

Final surface contours based on A.H.D. datum at an interval of 0.25m, shown as: 

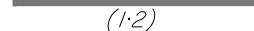
Final surface level shown as:-  $+20.62$

Where applicable, areas to be filled from the pre-development surface or the temporary basin surface are shown as:-



Depth of fill, in metres, shown as:-  $+1.9$

Retaining wall and retaining wall height, shown on the lower side of the wall, have been drawn from plans supplied by Sheehy & Partners shown as:

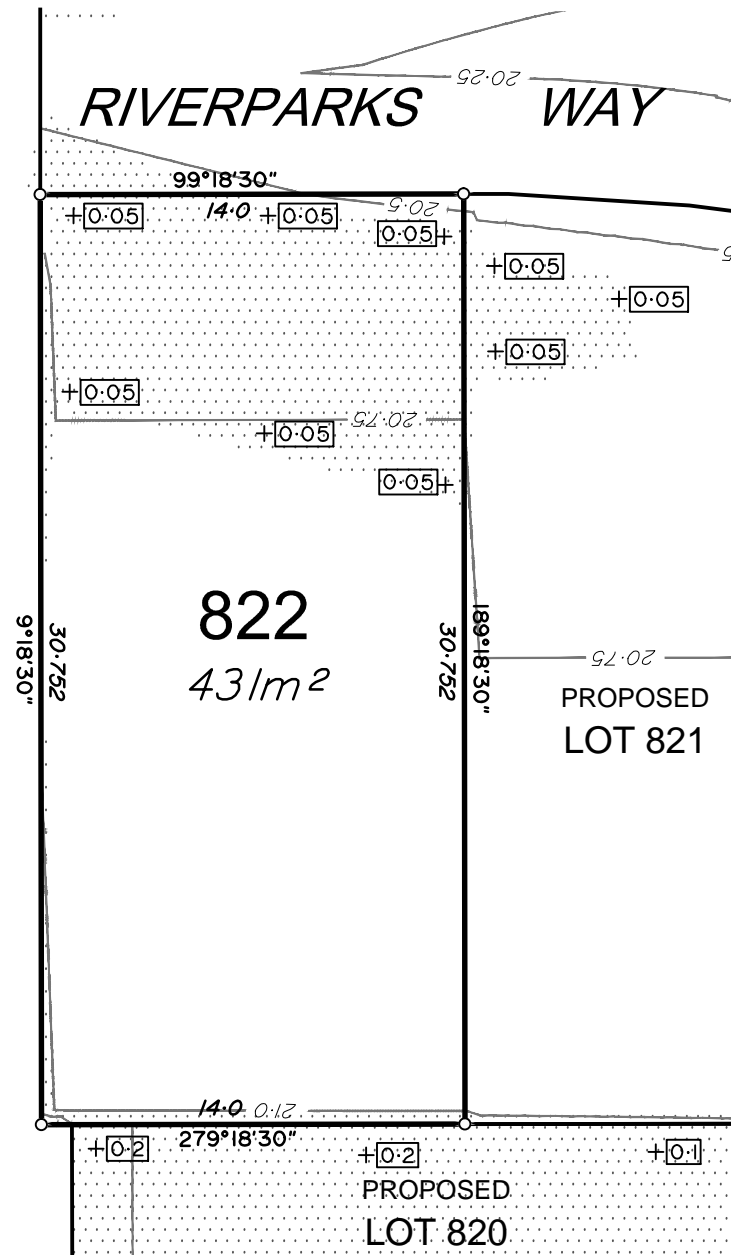


PROPOSED  
LOT 111

822  
431m<sup>2</sup>

PROPOSED  
LOT 821

PROPOSED  
LOT 820



**RIVERPARKS  
STAGE 8A**

For  
**NORTHERLY PROJECTS PTY LTD**

**IMPORTANT NOTES:**  
(These notes are an integral part of this plan)  
This plan has been prepared for **NORTHERLY PROJECTS PTY LTD** for the purposes of a **Disclosure Plan Under the Land Sales Act 1984 (as amended)**.  
It is not to be used by any other person or corporation or for any other purposes and is subject to the following limitations:

Please refer to the approved Development Application for conditions relating to the LOT and to approved Operational Works drawings for services location and possible easements.

THESE DESIGNS AND DRAWINGS ARE COPYRIGHT AND ARE NOT TO BE USED OR REPRODUCED WITHOUT THE WRITTEN PERMISSION OF VERIS

Data Sources  
Cadastral Boundaries 31132 LC89(H).DWG  
Final Surface Contours 8606 STAGES 8A 8B3 & 8C DESIGN TINS.DWG  
Engineering Design 8606 DESIGN BASE\_20181101.DWG  
Pre-development Surface Orig Surface Supplied 180820 (12d Model)

Issue	Revisions	Date	Drawn
A	Original	01.11.2018	GJF

Locality: UPPER CABOOLTURE  
Local Authority: MBRC  
Horizontal Meridian: MGA Vide GNSS  
Vertical Level Datum: AHD D  
Scale: 1:250 @ A4  
Designed: Sheehy & Partners  
Drawn: GJF  
Checked: MMR  
Plot Date: 05 Nov, 2018  
Computer File Ref: 31132 St8A 8B3 8C DPs(A).DWG

**DISCLOSURE PLAN**  
of Proposed LOT 822  
being part of  
Lot 109 on SP292555



BRISBANE (07) 3666 4700  
WHITSUNDAYS (07) 4945 1722  
MACKAY (07) 4951 2911  
CAIRNS (07) 4051 6722  
veris.com.au  
ACN 615 735 727  
Veris Australia Pty Ltd

Drawing No **31132-DP 822** Issue **A**



Retaining Wall Lot 823  
 Min Height:- 1.8m  
 Max Height:- 1.9m  
 Average Height:- 1.85m

110  
 SP303130

Retaining Wall Lot 823  
 Min Height:- 1.6m  
 Max Height:- 1.8m  
 Average Height:- 1.7m

Retaining Wall Dobson Lane  
 Min Height:- 0.2m  
 Max Height:- 0.2m  
 Average Height:- 0.2m

Retaining Wall Dobson Lane  
 Min Height:- 0.2m  
 Max Height:- 0.4m  
 Average Height:- 0.3m

PROPOSED  
 LOT 824

823  
 695m<sup>2</sup>

RIVERPARKS WAY

RIVERPARKS  
 STAGE 8C

For  
 NORTHERLY PROJECTS PTY LTD

IMPORTANT NOTES:  
 (These notes are an integral part of this plan)  
 This plan has been prepared for NORTHERLY PROJECTS PTY LTD for the purposes of a Disclosure Plan Under the Land Sales Act 1984 (as amended).  
 It is not to be used by any other person or corporation or for any other purposes and is subject to the following limitations:

Please refer to the approved Development Application for conditions relating to the LOT and to approved Operational Works drawings for services location and possible easements.

THESE DESIGNS AND DRAWINGS ARE COPYRIGHT AND ARE NOT TO BE USED OR REPRODUCED WITHOUT THE WRITTEN PERMISSION OF VERIS

Data Sources  
 Cadastral Boundaries 31132 LC89(H).DWG  
 Final Surface Contours 8606 STAGES 8A 8B3 & 8C DESIGN TINS.DWG  
 Engineering Design 8606 DESIGN BASE\_20181101.DWG  
 Pre-development Surface  
 Orig Surface Supplied 180820 (12d Model)

Issue	Revisions	Date	Drawn	GJF
A	Original	01.11.2018		GJF

Locality: UPPER CABOOLTURE  
 Local Authority: MBRC  
 Horizontal Meridian: MGA Vide GNSS  
 Vertical Level Datum: AHD D  
 Scale: 1:250 @ A4  
 Designed: Sheehy & Partners  
 Drawn: GJF  
 Checked: MMR  
 Plot Date: 05 Nov, 2018  
 Computer File Ref: 31132 St8A 8B3 8C DPs(A).DWG

DISCLOSURE PLAN  
 of Proposed LOT 823  
 being part of  
 Lot 109 on SP292555



BRISBANE (07) 3666 4700  
 WHITSUNDAYS (07) 4946 1722  
 MACKAY (07) 4951 2911  
 CAIRNS (07) 4051 6722

veris.com.au  
 ACN 615 735 727  
 Veris Australia Pty Ltd

Drawing No 31132-DP 823 Issue A

ADDITIONAL NOTES:  
 The LOT dimensions and area shown hereon are subject to final field survey and also to the requirements of Council and any other authority which may have requirements under any relevant legislation

Final surface contours shown hereon have been drawn from data supplied by Sheehy & Partners Pty Ltd.

Depth of fill values shown are calculated from the lower of the pre-development surface or the temporary basin surface.

Compaction of any fill material placed on this site shall be completed to level one inspection and testing services in accordance with AS3798-2007.

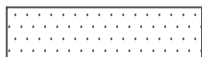
Copyright © Veris Australia Pty Ltd 1/11/2018.

LEGEND

Final surface contours based on A.H.D. datum at an interval of 0.25m, shown as: — 21.75 —

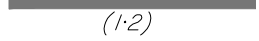
Final surface level shown as:- +20.62

Where applicable, areas to be filled from the pre-development surface or the temporary basin surface are shown as:-



Depth of fill, in metres, shown as:- +1.9

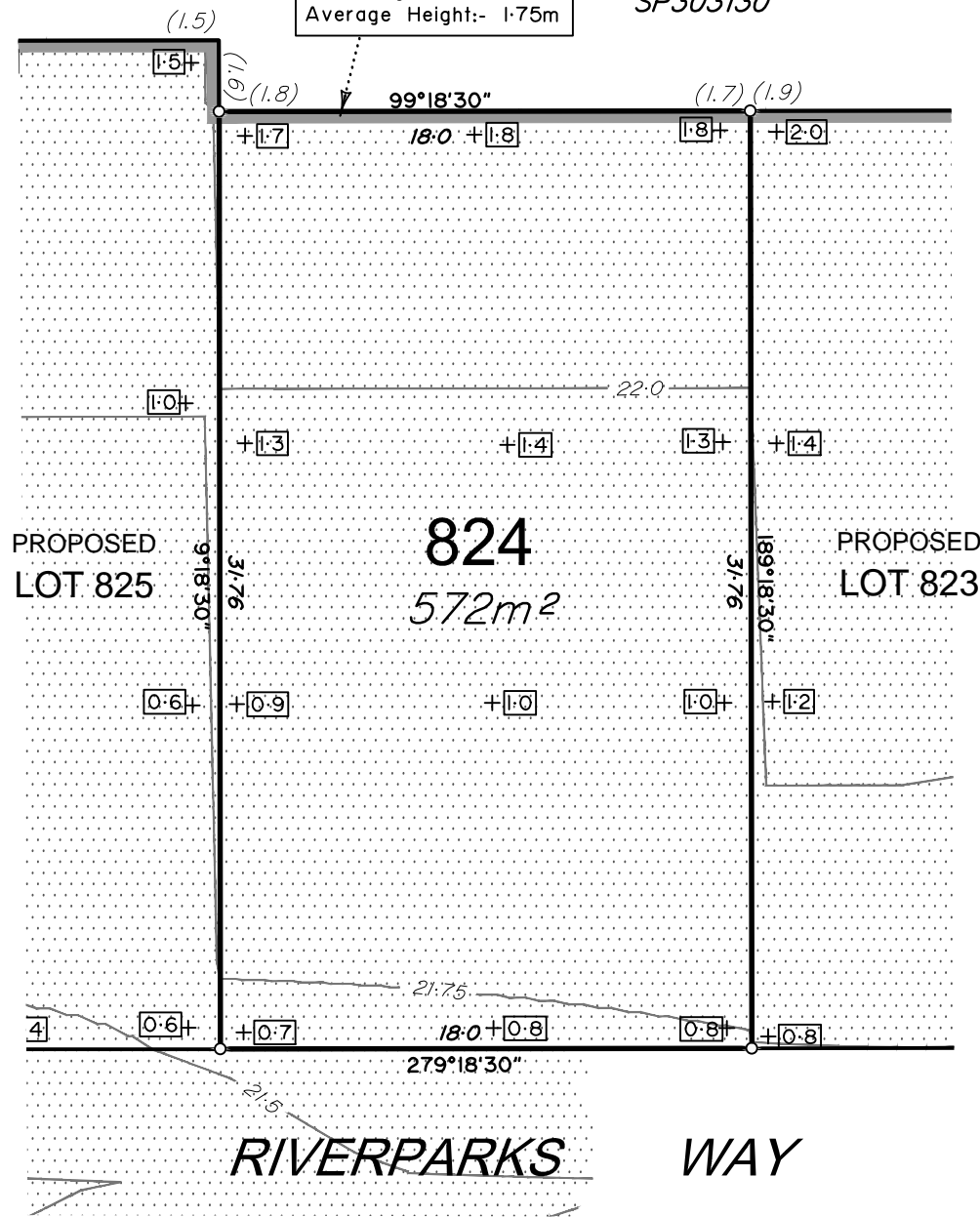
Retaining wall and retaining wall height, shown on the lower side of the wall, have been drawn from plans supplied by Sheehy & Partners shown as:





Retaining Wall Lot 824  
 Min Height:- 1.7m  
 Max Height:- 1.8m  
 Average Height:- 1.75m

110  
 SP303130



**ADDITIONAL NOTES:**

The LOT dimensions and area shown hereon are subject to final field survey and also to the requirements of Council and any other authority which may have requirements under any relevant legislation

Final surface contours shown hereon have been drawn from data supplied by Sheehy & Partners Pty Ltd.

Depth of fill values shown are calculated from the lower of the pre-development surface or the temporary basin surface.

Compaction of any fill material placed on this site shall be completed to level one inspection and testing services in accordance with AS3798-2007.

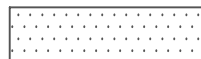
Copyright © Veris Australia Pty Ltd 1/11/2018.

**LEGEND**

Final surface contours based on A.H.D. datum at an interval of 0.25m, shown as: — 21.75 —

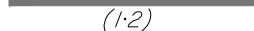
Final surface level shown as:- +20.62

Where applicable, areas to be filled from the pre-development surface or the temporary basin surface are shown as:-



Depth of fill, in metres, shown as:- +1.9

Retaining wall and retaining wall height, shown on the lower side of the wall, have been drawn from plans supplied by Sheehy & Partners shown as:



(1:2)



**RIVERPARKS  
 STAGE 8C**

For  
 NORTHERLY PROJECTS PTY LTD

**IMPORTANT NOTES:**  
 (These notes are an integral part of this plan)  
 This plan has been prepared for NORTHERLY PROJECTS PTY LTD for the purposes of a Disclosure Plan Under the Land Sales Act 1984 (as amended).  
 It is not to be used by any other person or corporation or for any other purposes and is subject to the following limitations:

Please refer to the approved Development Application for conditions relating to the LOT and to approved Operational Works drawings for services location and possible easements.

THESE DESIGNS AND DRAWINGS ARE COPYRIGHT AND ARE NOT TO BE USED OR REPRODUCED WITHOUT THE WRITTEN PERMISSION OF VERIS

Data Sources  
 Cadastral Boundaries 31132 LC89(H).DWG  
 Final Surface Contours 8606 STAGES 8A 8B3 & 8C DESIGN TINS.DWG  
 Engineering Design 8606 DESIGN BASE\_20181101.DWG  
 Pre-development Surface  
 Orig Surface Supplied 180820 (12d Model)

Issue	Revisions	Date	Drawn	GJF
A	Original	01.11.2018		GJF

Locality: UPPER CABOOLTURE  
 Local Authority: MBRC  
 Horizontal Meridian: MGA Vide GNSS  
 Vertical Level Datum: AHD D  
 Scale: 1:250 @ A4  
 Designed: Sheehy & Partners  
 Drawn: GJF  
 Checked: MMR  
 Plot Date: 05 Nov, 2018  
 Computer File Ref: 31132 St8A 8B3 8C DP(A).DWG

**DISCLOSURE PLAN  
 of Proposed LOT 824  
 being part of  
 Lot 109 on SP292555**



BRISBANE (07) 3666 4700 WHITSUNDAYS (07) 4945 1722  
 MACKAY (07) 4951 2911 CAIRNS (07) 4051 6722  
 veris.com.au  
 ACN 615 735 727  
 Veris Australia Pty Ltd

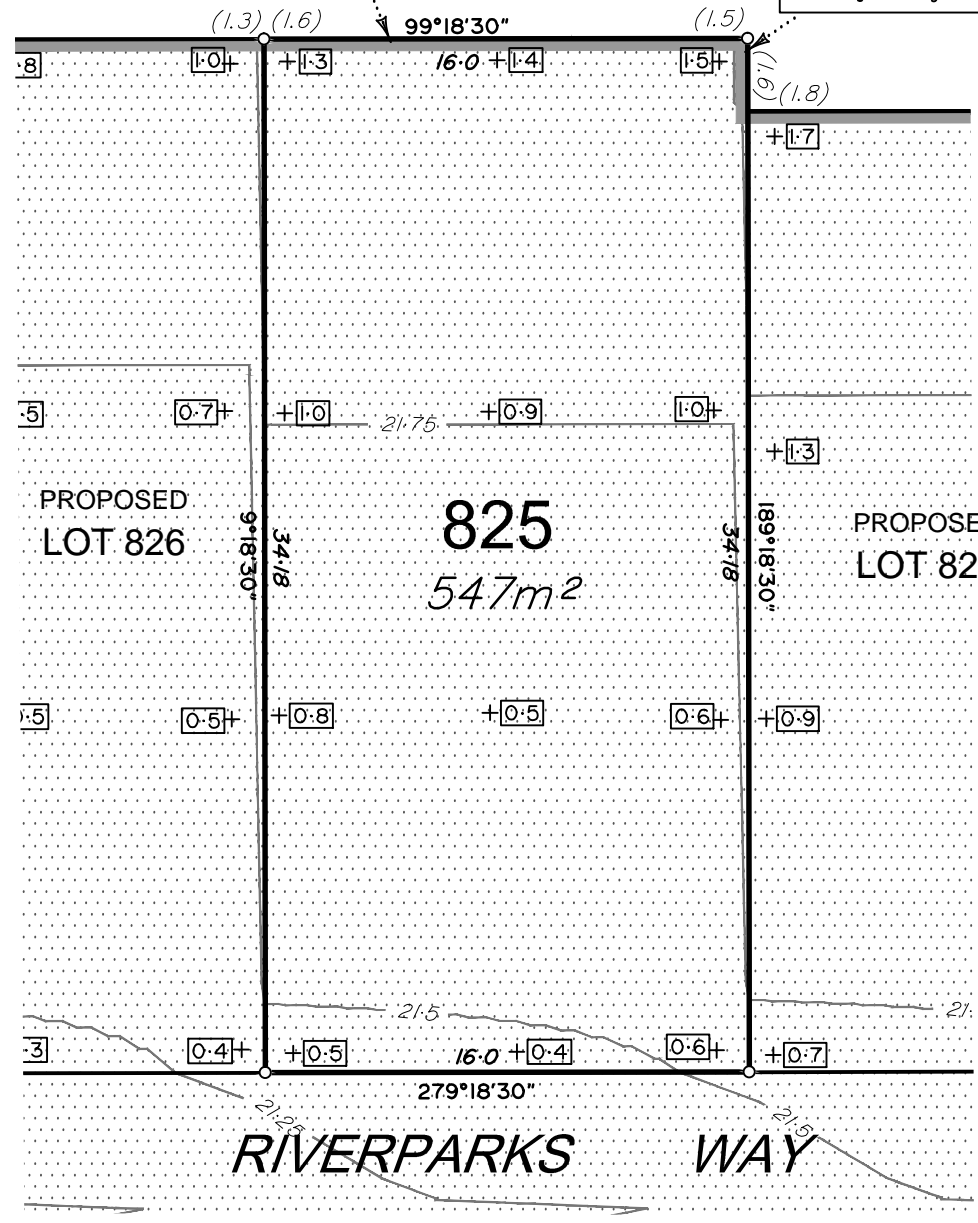
Drawing No 31132-DP 824 Issue A



Retaining Wall Lot 825  
 Min Height:- 1.5m  
 Max Height:- 1.6m  
 Average Height:- 1.55m

110  
 SP303130

Retaining Wall Lot 825  
 Min Height:- 1.6m  
 Max Height:- 1.6m  
 Average Height:- 1.6m



**ADDITIONAL NOTES:**

The LOT dimensions and area shown hereon are subject to final field survey and also to the requirements of Council and any other authority which may have requirements under any relevant legislation

Final surface contours shown hereon have been drawn from data supplied by Sheehy & Partners Pty Ltd.

Depth of fill values shown are calculated from the lower of the pre-development surface or the temporary basin surface.

Compaction of any fill material placed on this site shall be completed to level one inspection and testing services in accordance with AS3798-2007.

Copyright © Veris Australia Pty Ltd 1/11/2018.

**LEGEND**

Final surface contours based on A.H.D. datum at an interval of 0.25m, shown as: 21.75

Final surface level shown as:- +20.62

Where applicable, areas to be filled from the pre-development surface or the temporary basin surface are shown as:-

Depth of fill, in metres, shown as:- +1.9

Retaining wall and retaining wall height, shown on the lower side of the wall, have been drawn from plans supplied by Sheehy & Partners shown as:

(1:2)



**RIVERPARKS  
 STAGE 8C**  
 For  
 NORTHERLY PROJECTS PTY LTD

**IMPORTANT NOTES:**  
 (These notes are an integral part of this plan)  
 This plan has been prepared for NORTHERLY PROJECTS PTY LTD for the purposes of a **Disclosure Plan Under the Land Sales Act 1984 (as amended)**.  
 It is not to be used by any other person or corporation or for any other purposes and is subject to the following limitations:

Please refer to the approved Development Application for conditions relating to the LOT and to approved Operational Works drawings for services location and possible easements.

THESE DESIGNS AND DRAWINGS ARE COPYRIGHT AND ARE NOT TO BE USED OR REPRODUCED WITHOUT THE WRITTEN PERMISSION OF VERIS

Data Sources  
 Cadastral Boundaries 31132 LC89(H).DWG  
 Final Surface Contours 8606 STAGES 8A 8B3 & 8C DESIGN TINS.DWG  
 Engineering Design 8606 DESIGN BASE\_20181101.DWG  
 Pre-development Surface  
 Orig Surface Supplied 180820 (12d Model)

Issue	Revisions	Date	Drawn	GJF
A	Original	01.11.2018		GJF

Locality: UPPER CABOOLTURE  
 Local Authority: MBRC  
 Horizontal Meridian: MGA Vide GNSS  
 Vertical Level Datum: AHD D  
 Scale: 1:250 @ A4  
 Designed: Sheehy & Partners  
 Drawn: GJF  
 Checked: MMR  
 Plot Date: 05 Nov, 2018  
 Computer File Ref: 31132 St8A 8B3 8C DPs(A).DWG

**DISCLOSURE PLAN**  
 of Proposed LOT 825  
 being part of  
 Lot 109 on SP292555



BRISBANE (07) 3666 4700 WHITSUNDAYS (07) 4946 1722  
 MACKAY (07) 4951 2911 CAIRNS (07) 4051 6722  
 veris.com.au  
 ACN 615 735 727  
 Veris Australia Pty Ltd

Drawing No	Issue
31132-DP 825	A





**ADDITIONAL NOTES:**

The LOT dimensions and area shown hereon are subject to final field survey and also to the requirements of Council and any other authority which may have requirements under any relevant legislation

Final surface contours shown hereon have been drawn from data supplied by Sheehy & Partners Pty Ltd.

Depth of fill values shown are calculated from the lower of the pre-development surface or the temporary basin surface.

Compaction of any fill material placed on this site shall be completed to level one inspection and testing services in accordance with AS3798-2007.

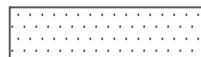
Copyright © Veris Australia Pty Ltd 1/11/2018.

**LEGEND**

Final surface contours based on A.H.D. datum at an interval of 0.25m, shown as: 21.75

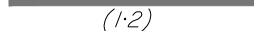
Final surface level shown as:- +20.62

Where applicable, areas to be filled from the pre-development surface or the temporary basin surface are shown as:-

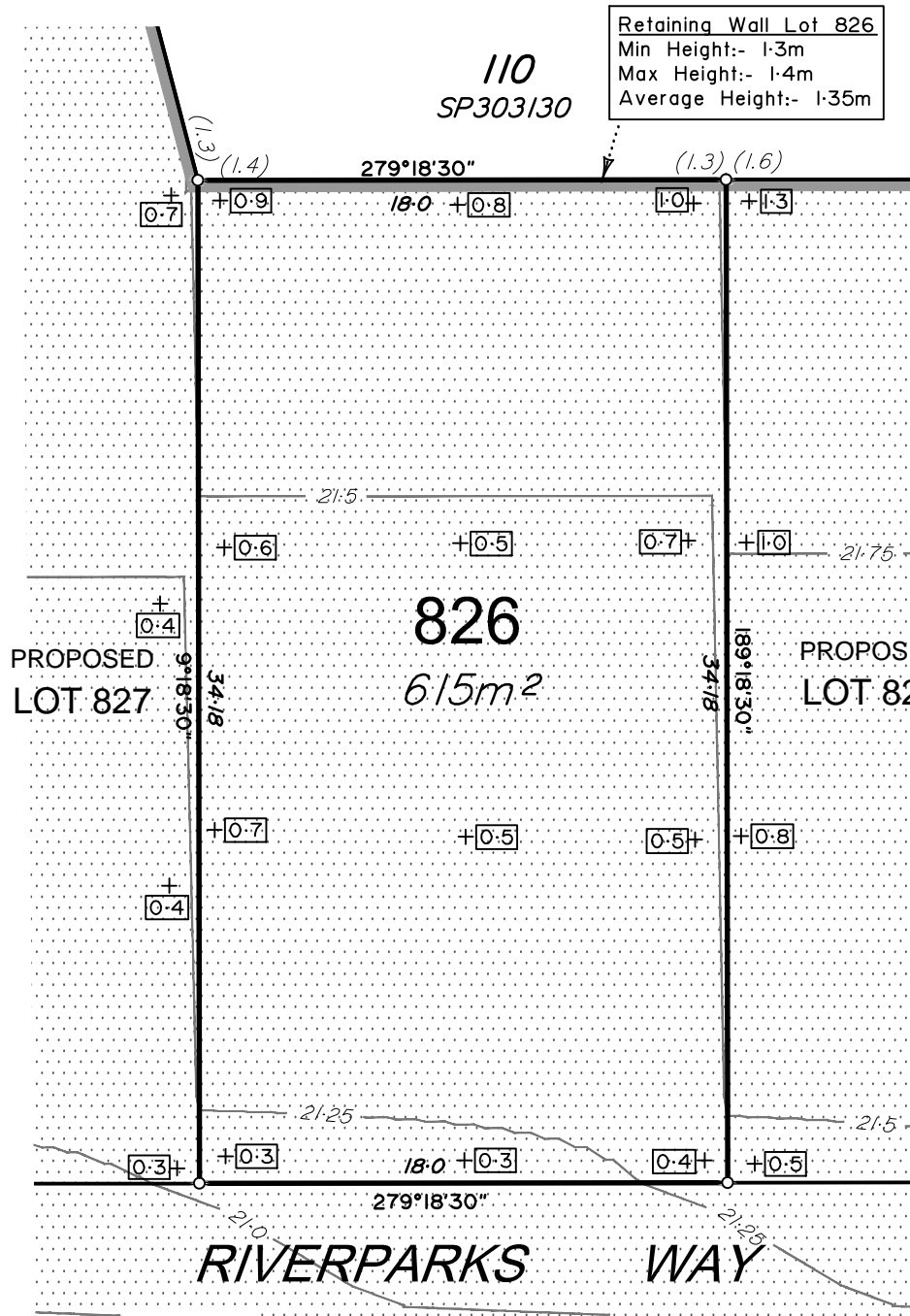


Depth of fill, in metres, shown as:- +0.9

Retaining wall and retaining wall height, shown on the lower side of the wall, have been drawn from plans supplied by Sheehy & Partners shown as:



(1:2)



Retaining Wall Lot 826  
Min Height:- 1.3m  
Max Height:- 1.4m  
Average Height:- 1.35m

110  
SP303130

279°18'30"

21.5

826  
615m<sup>2</sup>

PROPOSED  
LOT 827

PROPOSED  
LOT 825

RIVERPARKS

WAY

279°18'30"

12.5m  
50mm

25m  
100mm

37.5m  
150mm SCALE BAR

**RIVERPARKS  
STAGE 8C**

For  
NORTHERLY PROJECTS PTY LTD

**IMPORTANT NOTES:**  
(These notes are an integral part of this plan)  
This plan has been prepared for NORTHERLY PROJECTS PTY LTD for the purposes of **A Disclosure Plan Under the Land Sales Act 1984 (as amended)**.  
It is not to be used by any other person or corporation or for any other purposes and is subject to the following limitations:

Please refer to the approved Development Application for conditions relating to the LOT and to approved Operational Works drawings for services location and possible easements.

THESE DESIGNS AND DRAWINGS ARE COPYRIGHT AND ARE NOT TO BE USED OR REPRODUCED WITHOUT THE WRITTEN PERMISSION OF VERIS

Data Sources  
Cadastral Boundaries 31132 LC89(H).DWG  
Final Surface Contours 8606 STAGES 8A 8B3 & 8C DESIGN TINS.DWG  
Engineering Design 8606 DESIGN BASE\_20181101.DWG  
Pre-development Surface  
Orig Surface Supplied 180820 (12d Model)

Issue	Revisions	Date	Drawn	GJF
A	Original	01.11.2018		GJF

Locality: UPPER CABOOLTURE  
Local Authority: MBRC  
Horizontal Meridian: MGA Vide GNSS  
Vertical Level Datum: AHD D  
Scale: 1:250 @ A4  
Designed: Sheehy & Partners  
Drawn: GJF  
Checked: MMR  
Plot Date: 05 Nov, 2018  
Computer File Ref: 31132 St8A 8B3 8C DPs(A).DWG

**DISCLOSURE PLAN**  
of Proposed LOT 826  
being part of  
Lot 109 on SP292555



BRISBANE (07) 3666 4700  
WHITSUNDAYS (07) 4946 1722  
MACKAY (07) 4951 2911  
CAIRNS (07) 4051 6722

veris.com.au  
ACN 615 735 727  
Veris Australia Pty Ltd

Drawing No 31132-DP 826 Issue A



**ADDITIONAL NOTES:**

The LOT dimensions and area shown hereon are subject to final field survey and also to the requirements of Council and any other authority which may have requirements under any relevant legislation

Final surface contours shown hereon have been drawn from data supplied by Sheehy & Partners Pty Ltd.

Depth of fill values shown are calculated from the lower of the pre-development surface or the temporary basin surface.

Compaction of any fill material placed on this site shall be completed to level one inspection and testing services in accordance with AS3798-2007.

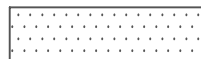
Copyright © Veris Australia Pty Ltd 1/11/2018.

**LEGEND**

Final surface contours based on A.H.D. datum at an interval of 0.25m, shown as: 21.75

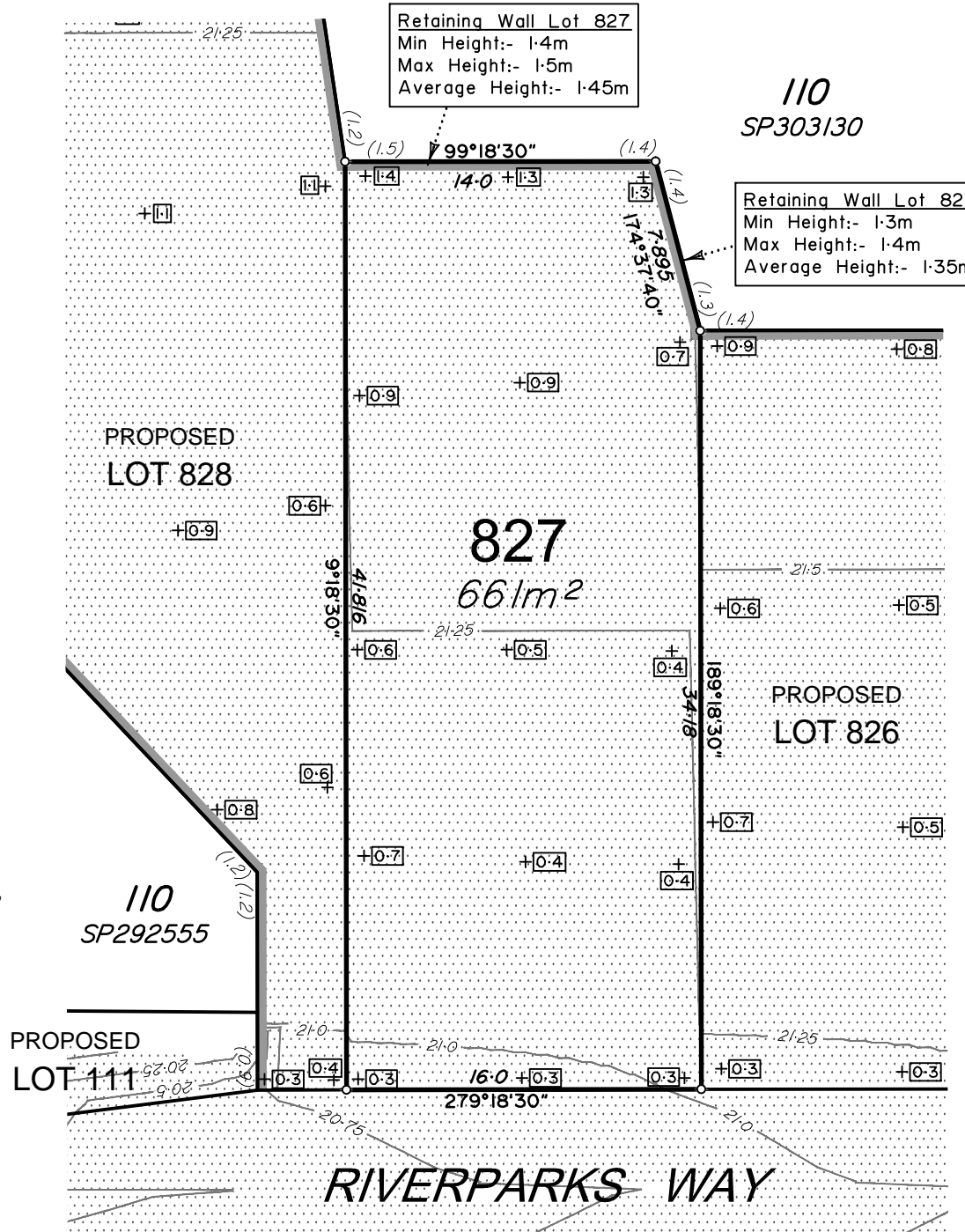
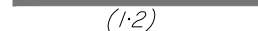
Final surface level shown as:- +20.62

Where applicable, areas to be filled from the pre-development surface or the temporary basin surface are shown as:-



Depth of fill, in metres, shown as:- +1.9

Retaining wall and retaining wall height, shown on the lower side of the wall, have been drawn from plans supplied by Sheehy & Partners shown as:



**Retaining Wall Lot 827**  
 Min Height:- 1.4m  
 Max Height:- 1.5m  
 Average Height:- 1.45m

**Retaining Wall Lot 827**  
 Min Height:- 1.3m  
 Max Height:- 1.4m  
 Average Height:- 1.35m

**RIVERPARKS  
 STAGE 8C**  
 For  
**NORTHERLY PROJECTS PTY LTD**

**IMPORTANT NOTES:**  
 (These notes are an integral part of this plan)  
 This plan has been prepared for **NORTHERLY PROJECTS PTY LTD** for the purposes of **A Disclosure Plan Under the Land Sales Act 1984 (as amended)**.  
 It is not to be used by any other person or corporation or for any other purposes and is subject to the following limitations:

Please refer to the approved Development Application for conditions relating to the LOT and to approved Operational Works drawings for services location and possible easements.

THESE DESIGNS AND DRAWINGS ARE COPYRIGHT AND ARE NOT TO BE USED OR REPRODUCED WITHOUT THE WRITTEN PERMISSION OF VERIS

**Data Sources**  
 Cadastral Boundaries 31132 LC89(H).DWG  
 Final Surface Contours 8606 STAGES 8A 8B3 & 8C DESIGN TINS.DWG  
 Engineering Design 8606 DESIGN BASE\_20181101.DWG  
 Pre-development Surface  
 Orig Surface Supplied 180820 (12d Model)

Issue	Revisions	Date	Drawn	GJF
A	Original	01.11.2018		GJF

Locality: UPPER CABOOLTURE  
 Local Authority: MBRC  
 Horizontal Meridian: MGA Vide GNSS  
 Vertical Level Datum: AHD D  
 Scale: 1:300 @ A4  
 Designed: Sheehy & Partners  
 Drawn: GJF  
 Checked: MMR  
 Plot Date: 05 Nov, 2018  
 Computer File Ref: 31132 St8A 8B3 8C DPs(A).DWG

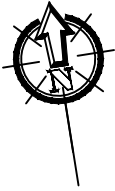
**DISCLOSURE PLAN**  
 of Proposed LOT 827  
 being part of  
 Lot 109 on SP292555



BRISBANE (07) 3666 4700 WHITSUNDAYS (07) 4946 1722  
 MACKAY (07) 4951 2911 CAIRNS (07) 4051 6722  
 veris.com.au  
 ACN 615 735 727  
 Veris Australia Pty Ltd

Drawing No **31132-DP 827** Issue **A**





**ADDITIONAL NOTES:**

The LOT dimensions and area shown hereon are subject to final field survey and also to the requirements of Council and any other authority which may have requirements under any relevant legislation

Final surface contours shown hereon have been drawn from data supplied by Sheehy & Partners Pty Ltd.

Depth of fill values shown are calculated from the lower of the pre-development surface or the temporary basin surface.

Compaction of any fill material placed on this site shall be completed to level one inspection and testing services in accordance with AS3798-2007.

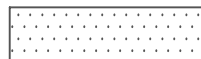
Copyright © Veris Australia Pty Ltd 1/11/2018.

**LEGEND**

Final surface contours based on A.H.D. datum at an interval of 0.25m, shown as: 21.75

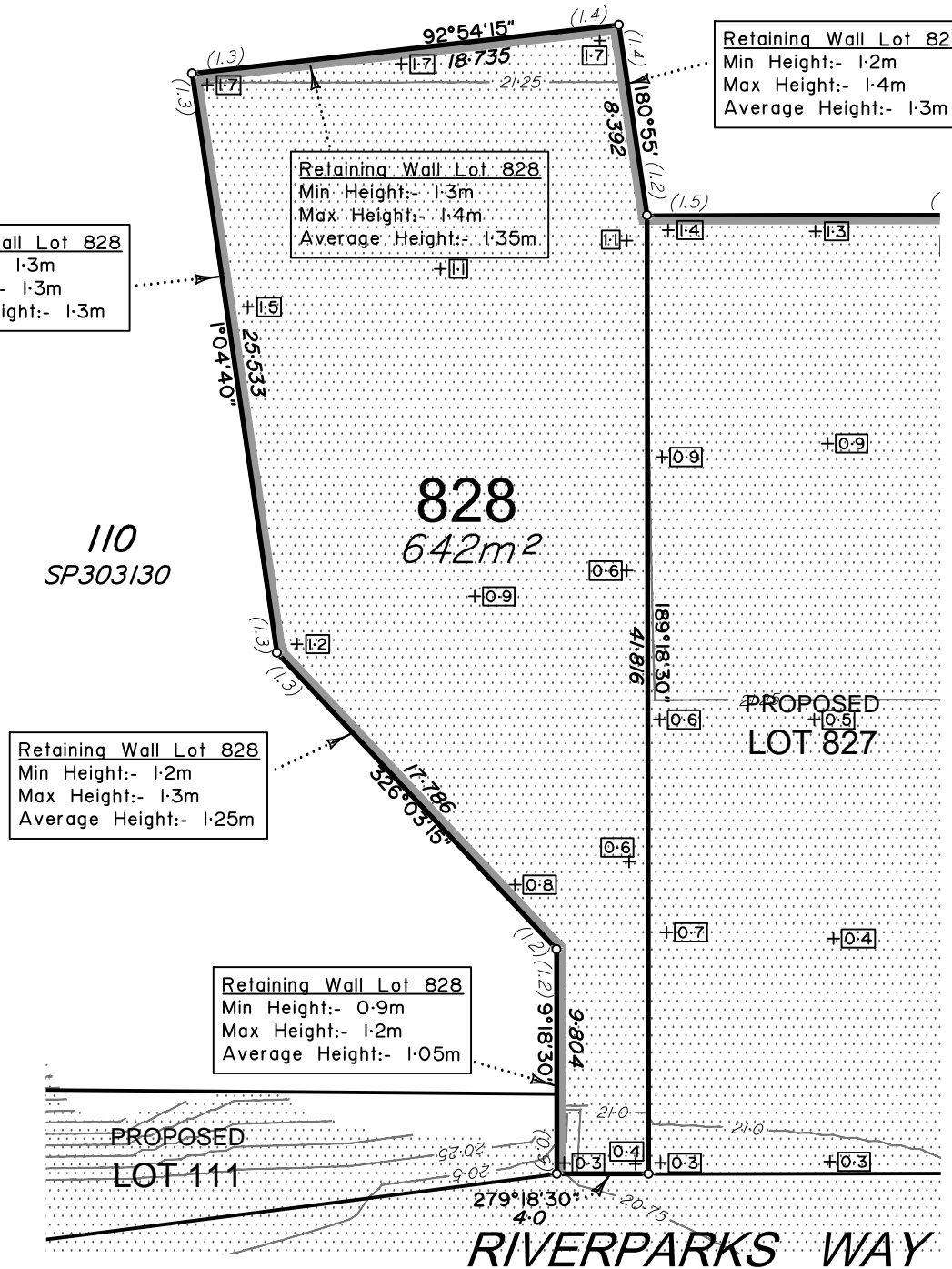
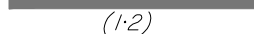
Final surface level shown as:- +20.62

Where applicable, areas to be filled from the pre-development surface or the temporary basin surface are shown as:-



Depth of fill, in metres, shown as:- +1.9

Retaining wall and retaining wall height, shown on the lower side of the wall, have been drawn from plans supplied by Sheehy & Partners shown as:



Retaining Wall Lot 828  
Min Height:- 1.2m  
Max Height:- 1.4m  
Average Height:- 1.3m

Retaining Wall Lot 828  
Min Height:- 1.3m  
Max Height:- 1.4m  
Average Height:- 1.35m

Retaining Wall Lot 828  
Min Height:- 1.3m  
Max Height:- 1.3m  
Average Height:- 1.3m

Retaining Wall Lot 828  
Min Height:- 1.2m  
Max Height:- 1.3m  
Average Height:- 1.25m

Retaining Wall Lot 828  
Min Height:- 0.9m  
Max Height:- 1.2m  
Average Height:- 1.05m

**RIVERPARKS  
STAGE 8C**

For  
**NORTHERLY PROJECTS PTY LTD**

**IMPORTANT NOTES:**  
(These notes are an integral part of this plan)  
This plan has been prepared for **NORTHERLY PROJECTS PTY LTD** for the purposes of **A Disclosure Plan Under the Land Sales Act 1984 (as amended)**.  
It is not to be used by any other person or corporation or for any other purposes and is subject to the following limitations:

Please refer to the approved Development Application for conditions relating to the LOT and to approved Operational Works drawings for services location and possible easements.

THESE DESIGNS AND DRAWINGS ARE COPYRIGHT AND ARE NOT TO BE USED OR REPRODUCED WITHOUT THE WRITTEN PERMISSION OF VERIS

Data Sources  
Cadastral Boundaries 31132 LC89(H).DWG  
Final Surface Contours 8606 STAGES 8A 8B3 & 8C DESIGN TINS.DWG  
Engineering Design 8606 DESIGN BASE 20181101.DWG  
Pre-development Surface  
Orig Surface Supplied 180820 (12d Model)

Issue	Revisions	Date	Drawn	GJF
A	Original	01.11.2018		GJF

Locality: UPPER CABOOLTURE  
Local Authority: MBRC  
Horizontal Meridian: MGA Vide GNSS  
Vertical Level Datum: AHD D  
Scale: 1:300 @ A4  
Designed: Sheehy & Partners  
Drawn: GJF  
Checked: MMR  
Plot Date: 05 Nov, 2018  
Computer File Ref: 31132 St8A 8B3 8C DPs(A).DWG

**DISCLOSURE PLAN  
of Proposed LOT 828  
being part of  
Lot 109 on SP292555**



BRISBANE (07) 3666 4700  
WHITSUNDAYS (07) 4946 1722  
MACKAY (07) 4951 2911  
CAIRNS (07) 4051 6722

veris.com.au  
ACN 615 735 727  
Veris Australia Pty Ltd

Drawing No **31132-DP 828** Issue **A**



**ADDITIONAL NOTES:**

The LOT dimensions and area shown hereon are subject to final field survey and also to the requirements of Council and any other authority which may have requirements under any relevant legislation

Final surface contours shown hereon have been drawn from data supplied by Sheehy & Partners Pty Ltd.

Depth of fill values shown are calculated from the lower of the pre-development surface or the temporary basin surface.

Compaction of any fill material placed on this site shall be completed to level one inspection and testing services in accordance with AS3798-2007.

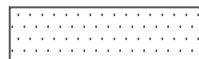
Copyright © Veris Australia Pty Ltd 1/11/2018.

**LEGEND**

Final surface contours based on A.H.D. datum at an interval of 0.25m, shown as: 21.75

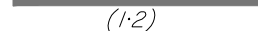
Final surface level shown as:- +20.62

Where applicable, areas to be filled from the pre-development surface or the temporary basin surface are shown as:-

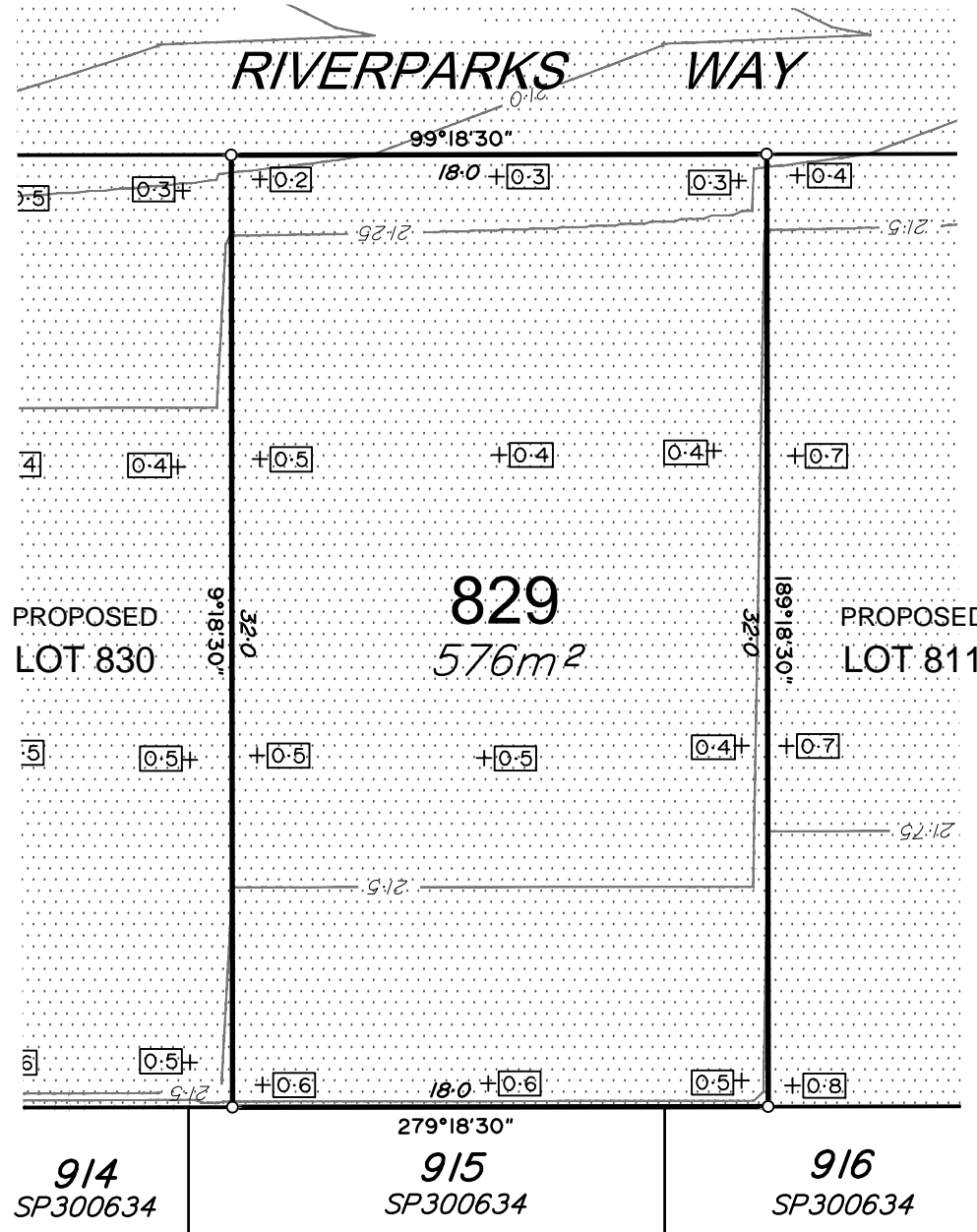


Depth of fill, in metres, shown as:- 0.9

Retaining wall and retaining wall height, shown on the lower side of the wall, have been drawn from plans supplied by Sheehy & Partners shown as:



(1.2)



**RIVERPARKS  
STAGE 8C**

For  
**NORTHERLY PROJECTS PTY LTD**

**IMPORTANT NOTES:**  
(These notes are an integral part of this plan)  
This plan has been prepared for **NORTHERLY PROJECTS PTY LTD** for the purposes of **A Disclosure Plan Under the Land Sales Act 1984 (as amended)**.  
It is not to be used by any other person or corporation or for any other purposes and is subject to the following limitations:

Please refer to the approved Development Application for conditions relating to the LOT and to approved Operational Works drawings for services location and possible easements.

THESE DESIGNS AND DRAWINGS ARE COPYRIGHT AND ARE NOT TO BE USED OR REPRODUCED WITHOUT THE WRITTEN PERMISSION OF VERIS

**Data Sources**  
Cadastral Boundaries 31132 LC89(H).DWG  
Final Surface Contours 8606 STAGES 8A 8B3 & 8C DESIGN TINS.DWG  
Engineering Design 8606 DESIGN BASE\_20181101.DWG  
Pre-development Surface Orig Surface Supplied 180820 (12d Model)

Issue	Revisions	Date	Drawn	GJF
A	Original	01.11.2018		GJF

Local Authority: **UPPER CABOOLTURE MBRC**  
Horizontal Meridian: **MGA Vide GNSS**  
Vertical Level Datum: **AHD D**  
Scale: **1:250 @ A4**  
Designed: **Sheehy & Partners**  
Drawn: **GJF**  
Checked: **MMR**  
Plot Date: **05 Nov, 2018**  
Computer File Ref: **31132 St8A 8B3 8C DPs(A).DWG**

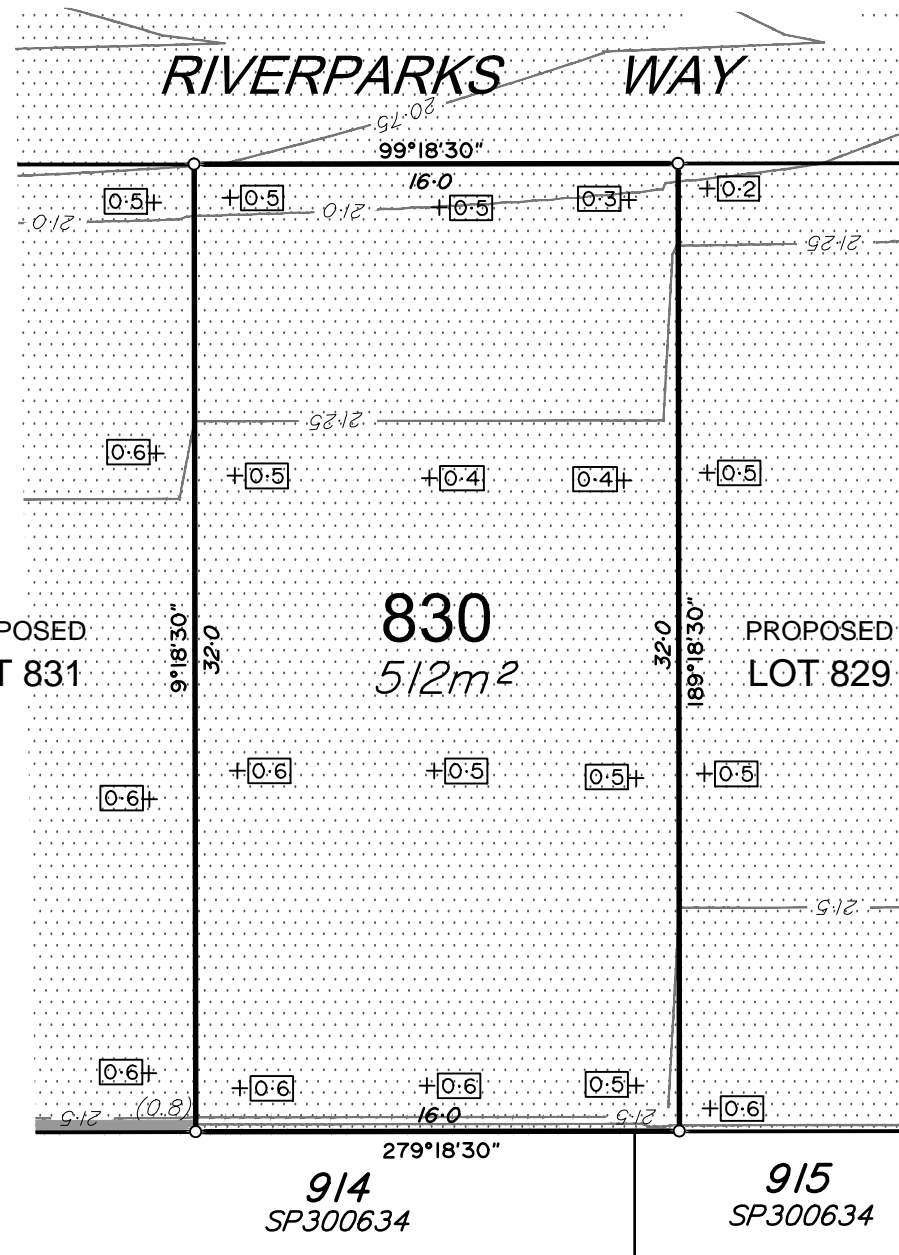
**DISCLOSURE PLAN**  
of Proposed LOT 829  
being part of  
Lot 109 on SP292555



**BRISBANE** (07) 3666 4700  
**WHITSUNDAYS** (07) 4945 1722  
**MACKAY** (07) 4951 2911  
**CAIRNS** (07) 4051 6722

veris.com.au  
ACN 615 735 727  
Veris Australia Pty Ltd

Drawing No **31132-DP 829** Issue **A**



**ADDITIONAL NOTES:**

The LOT dimensions and area shown hereon are subject to final field survey and also to the requirements of Council and any other authority which may have requirements under any relevant legislation

Final surface contours shown hereon have been drawn from data supplied by Sheehy & Partners Pty Ltd.

Depth of fill values shown are calculated from the lower of the pre-development surface or the temporary basin surface.

Compaction of any fill material placed on this site shall be completed to level one inspection and testing services in accordance with AS3798-2007.

Copyright © Veris Australia Pty Ltd 1/11/2018.

**LEGEND**

Final surface contours based on A.H.D. datum at an interval of 0.25m, shown as: 21.75

Final surface level shown as:- +20.62

Where applicable, areas to be filled from the pre-development surface or the temporary basin surface are shown as:-

Depth of fill, in metres, shown as:- 1.9

Retaining wall and retaining wall height, shown on the lower side of the wall, have been drawn from plans supplied by Sheehy & Partners shown as:

(1.2)



**RIVERPARKS  
STAGE 8C**

For

**NORTHERLY PROJECTS PTY LTD**

**IMPORTANT NOTES:**  
(These notes are an integral part of this plan)

This plan has been prepared for **NORTHERLY PROJECTS PTY LTD**, for the purposes of **A Disclosure Plan Under the Land Sales Act 1984 (as amended)**.

It is not to be used by any other person or corporation or for any other purposes and is subject to the following limitations:

Please refer to the approved Development Application for conditions relating to the LOT and to approved Operational Works drawings for services location and possible easements.

THESE DESIGNS AND DRAWINGS ARE COPYRIGHTED AND ARE NOT TO BE USED OR REPRODUCED WITHOUT THE WRITTEN PERMISSION OF VERIS.

**Data Sources**  
Cadastral Boundaries 31132 LC89(H).DWG  
Final Surface Contours 8606 STAGES 8A 8B3 & 8C DESIGN TINS.DWG  
Engineering Design 8606 DESIGN BASE\_20181101.DWG  
Pre-development Surface Orig Surface Supplied 180820 (12d Model)

A	Original	01.11.2018	GJF
Issue	Revisions	Date	Drawn

Locality: UPPER CABOOLTURE  
Local Authority: MBRC  
Horizontal Meridian: MGA Vide GNSS  
Vertical Level Datum: AHD D  
Scale: 1:250 @ A4  
Designed: Sheehy & Partners  
Drawn: GJF  
Checked: MMR  
Plot Date: 05 Nov, 2018  
Computer File Ref: 31132 St8A 8B3 8C DPs(A).DWG

**DISCLOSURE PLAN**  
of Proposed LOT 830

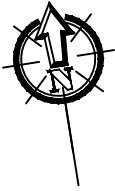
being part of  
Lot 109 on SP292555



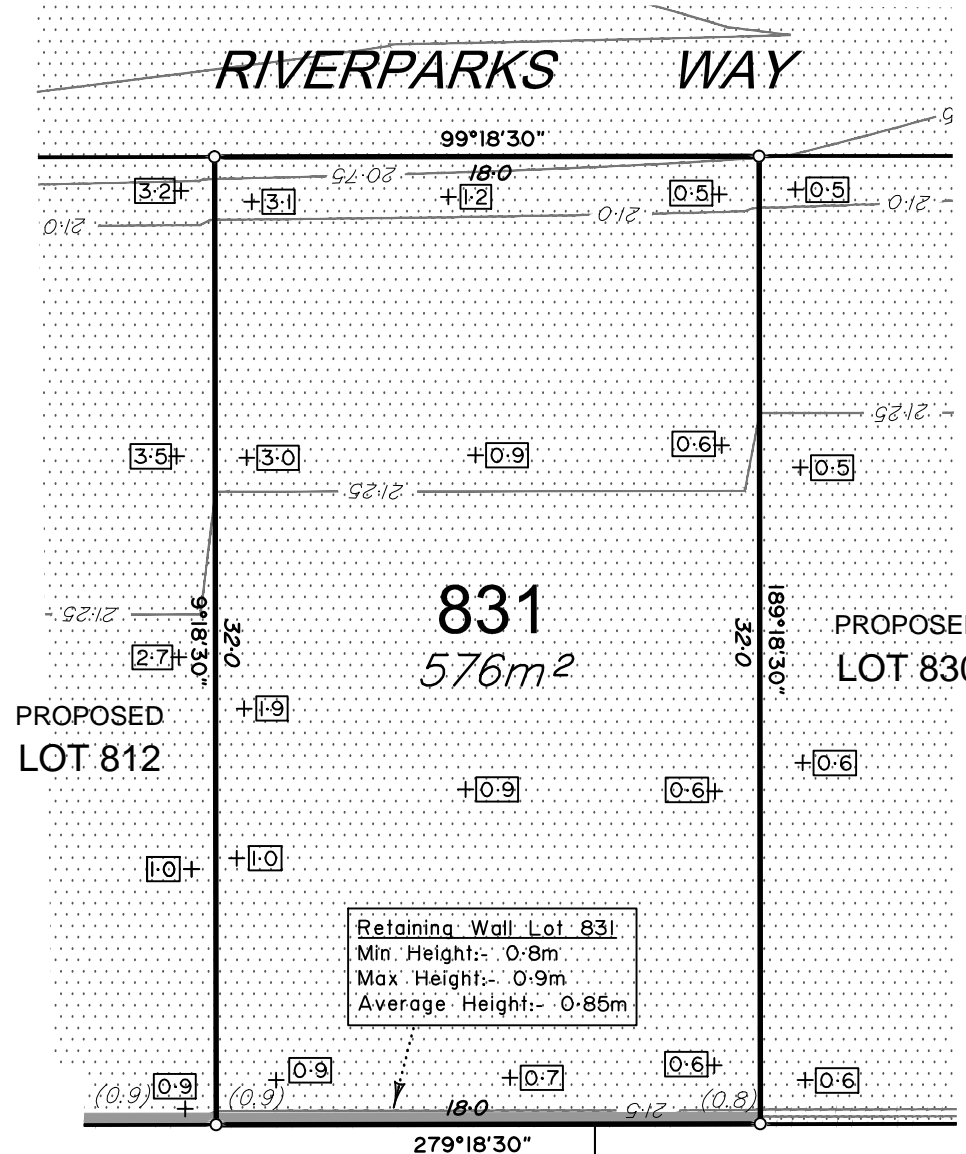
BRISBANE (07) 3666 4700 WHITSUNDAYS (07) 4946 1722  
MACKAY (07) 4951 2911 CAIRNS (07) 4051 6722

veris.com.au  
ACN 615 735 727  
Veris Australia Pty Ltd

Drawing No 31132-DP 830 Issue A



# RIVERPARKS WAY



Retaining Wall Lot 831  
 Min Height:- 0.8m  
 Max Height:- 0.9m  
 Average Height:- 0.85m

### ADDITIONAL NOTES:

The LOT dimensions and area shown hereon are subject to final field survey and also to the requirements of Council and any other authority which may have requirements under any relevant legislation

Final surface contours shown hereon have been drawn from data supplied by Sheehy & Partners Pty Ltd.

Depth of fill values shown are calculated from the lower of the pre-development surface or the temporary basin surface.

Compaction of any fill material placed on this site shall be completed to level one inspection and testing services in accordance with AS3798-2007.

Copyright © Veris Australia Pty Ltd 1/11/2018.

## LEGEND

Final surface contours based on A.H.D. datum at an interval of 0.25m, shown as: 21.75

Final surface level shown as:- +20.62

Where applicable, areas to be filled from the pre-development surface or the temporary basin surface are shown as:-

Depth of fill, in metres, shown as:- +1.9

Retaining wall and retaining wall height, shown on the lower side of the wall, have been drawn from plans supplied by Sheehy & Partners shown as:

(1:2)



## RIVERPARKS STAGE 8C

For  
NORTHERLY PROJECTS PTY LTD

**IMPORTANT NOTES:**  
 (These notes are an integral part of this plan)  
 This plan has been prepared for NORTHERLY PROJECTS PTY LTD for the purposes of **A Disclosure Plan Under the Land Sales Act 1984 (as amended)**.  
 It is not to be used by any other person or corporation or for any other purposes and is subject to the following limitations:

Please refer to the approved Development Application for conditions relating to the LOT and to approved Operational Works drawings for services location and possible easements.

THESE DESIGNS AND DRAWINGS ARE COPYRIGHT AND ARE NOT TO BE USED OR REPRODUCED WITHOUT THE WRITTEN PERMISSION OF VERIS

Data Sources  
 Cadastral Boundaries 31132 LC89(H).DWG  
 Final Surface Contours 8606 STAGES 8A 8B3 & 8C DESIGN TINS.DWG  
 Engineering Design 8606 DESIGN BASE\_20181101.DWG  
 Pre-development Surface  
 Orig Surface Supplied 180820 (12d Model)

Issue	Revisions	Date	Drawn	GJF
A	Original	01.11.2018		GJF

Locality: UPPER CABOOLTURE  
 Local Authority: MBRC  
 Horizontal Meridian: MGA Vide GNSS  
 Vertical Level Datum: AHD D  
 Scale: 1:250 @ A4  
 Designed: Sheehy & Partners  
 Drawn: GJF  
 Checked: MMR  
 Plot Date: 05 Nov, 2018  
 Computer File Ref: 31132 St8A 8B3 8C DPs(A).DWG

**DISCLOSURE PLAN**  
 of Proposed LOT 831  
 being part of  
 Lot 109 on SP292555



BRISBANE (07) 3666 4700 WHITSUNDAYS (07) 4946 1722  
 MACKAY (07) 4951 2911 CAIRNS (07) 4051 6722

veris.com.au  
 ACN 615 735 727  
 Veris Australia Pty Ltd

Drawing No 31132-DP 831 Issue A